

Excellent Integrated System Limited

Stocking Distributor

Click to view price, real time Inventory, Delivery & Lifecycle Information:

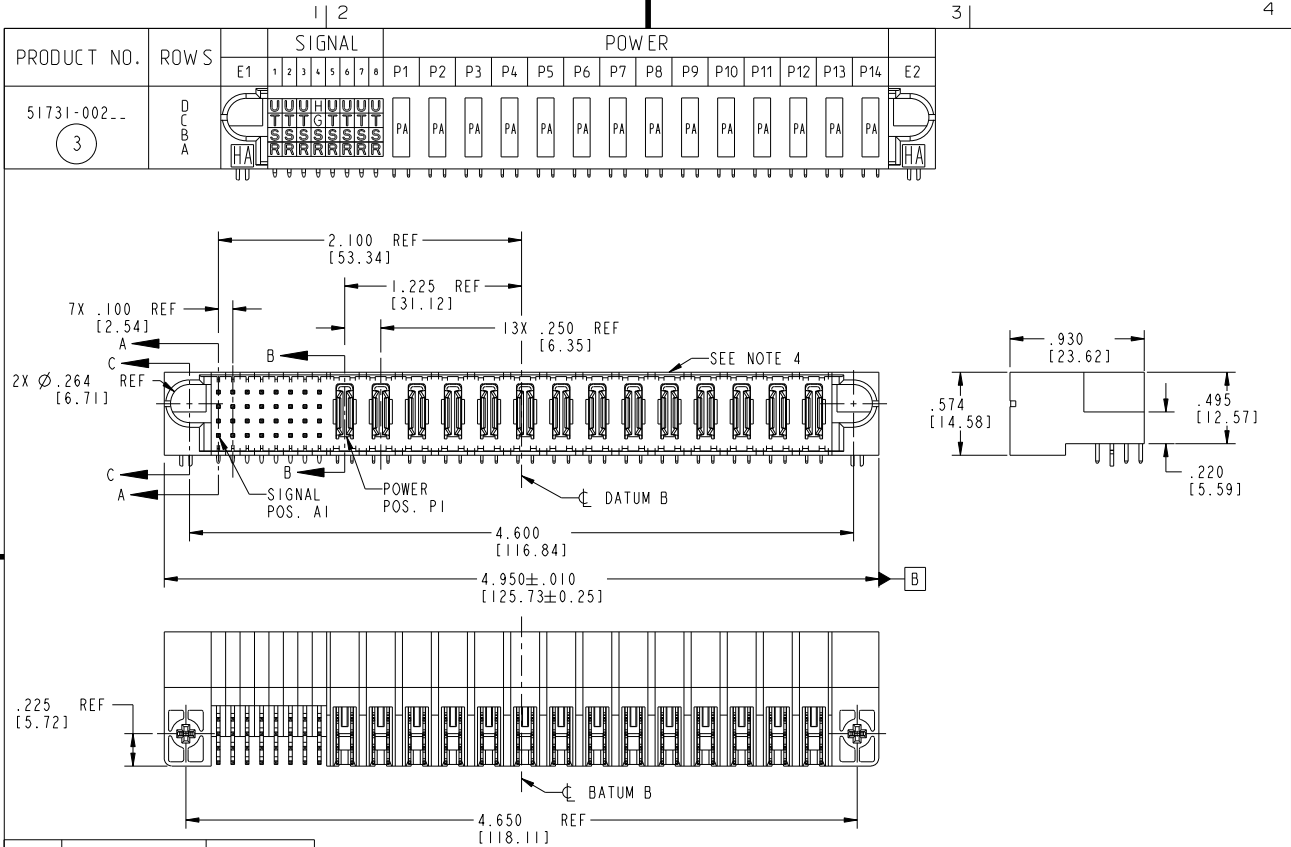
[FCI](#)
[51731-002](#)

For any questions, you can email us directly:
sales@integrated-circuit.com

Tous droits strictement réservés. Reproduction ou communication à des tiers interdite sans que l'on ait obtenu l'autorisation écrite du propriétaire. Propriété de c FCI. Droits de reproduction FCI.



All rights strictly reserved. Reproduction or issue to third parties in any form whatsoever is not permitted without written authority from the proprietor. Property of FCI. Copyright FCI.



CODE	DIM "M" MATING LENGTH	CONTACT TYPE
G	.220 [5.59]	SIGNAL
H	.220 [5.59]	SIGNAL
R	.270 [6.86]	SIGNAL
S	.270 [6.86]	SIGNAL
T	.270 [6.86]	SIGNAL
U	.270 [6.86]	SIGNAL
PA	N/A [N/A]	POWER
HA	N/A [N/A]	HOLD-DOWN

mat'l code				SEE NOTE 2		tolerances unless otherwise specified		CUSTOMER	
ltr	ech no.	dr	date	linear	.XX±.01/0.X±0.3	projection	COPY		
A	V02550	JWS	11-02-00	angles	.XXX±.005/0.XX±0.13		www.fciconnect.com		
B	V20495	JWS	03-26-02		.XXXX±.0020/0.XXX±0.051		title 32S + 14P		
C	V04-0915	TAB	09/15/04		0°±?	RIGHT ANGLE SOLDER HEADER			
D	V04-1133	TAB	12/01/04	dr	J. SHAFFER	03-26-02	product family PwrBlade code		
E	DG05-0455	CS	11/12/05	enr	M. MOSTOLLER	03-26-02	size 213		
F	DG06-0367	JMG	09/07/06	chr	M. MOSTOLLER	03-26-02	sheet 1 of 4		
				appd	M. MOSTOLLER	03-26-02			
sheet index	revision sheet	F 1	F 2	F 3	F 4				

INCH/MM		scale	
INCH	MM	1:1	

1 | 2

Pro/E

PDM: Rev:F

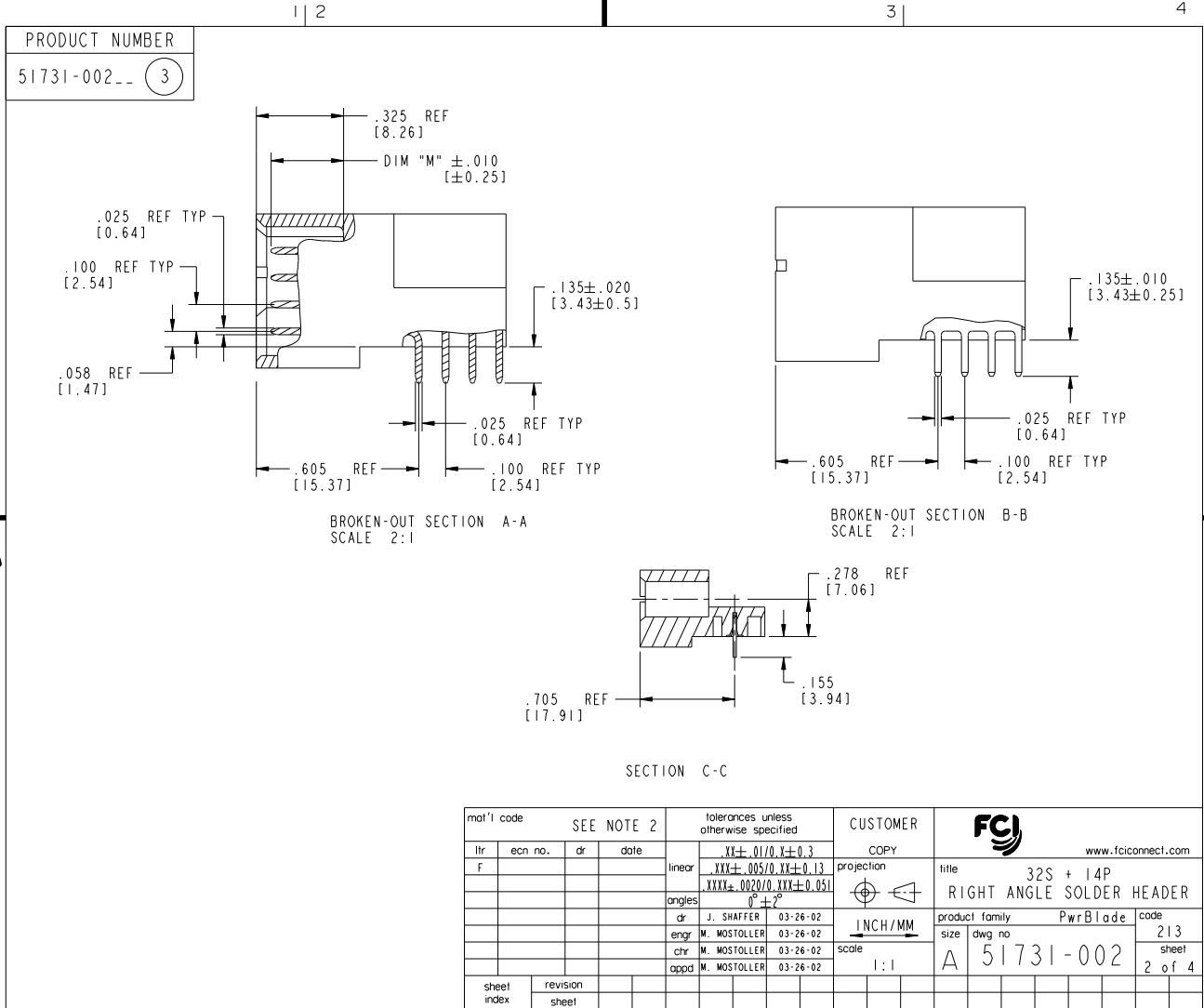
STATUS: Released

Printed: Dec 20, 2010

Tous droits strictement réservés. Reproduction ou communication à des tiers interdite sans quelque forme que ce soit sans autorisation écrite du propriétaire. Propriété de c FCI. Droits de reproduction FCI.



All rights strictly reserved. Reproduction or issue to third parties, in any form whatsoever is not permitted without written authority from the proprietor. Property of FCI. Copyright FCI.



mat'l code		SEE NOTE 2		tolerances unless otherwise specified		CUSTOMER		FCI		www.fciconnect.com	
ltr	ech no.	dr	date	linear	.XX±.01/0.X±0.3	projection	COPY	title	32S + 14P		
F				angles	.XXX±.005/0.XX±0.13	INCH/MM		RIGHT ANGLE SOLDER HEADER		product family	PwrBlade
				dr	.XXXX±.0020/0.XXX±0.051	scale	1:1	size	dwg no	A	code
				enr	0°±?					51731-002	213
				chr							sheet
				appd							2 of 4
sheet index	revision sheet										

Pro/E

PDM: Rev:F

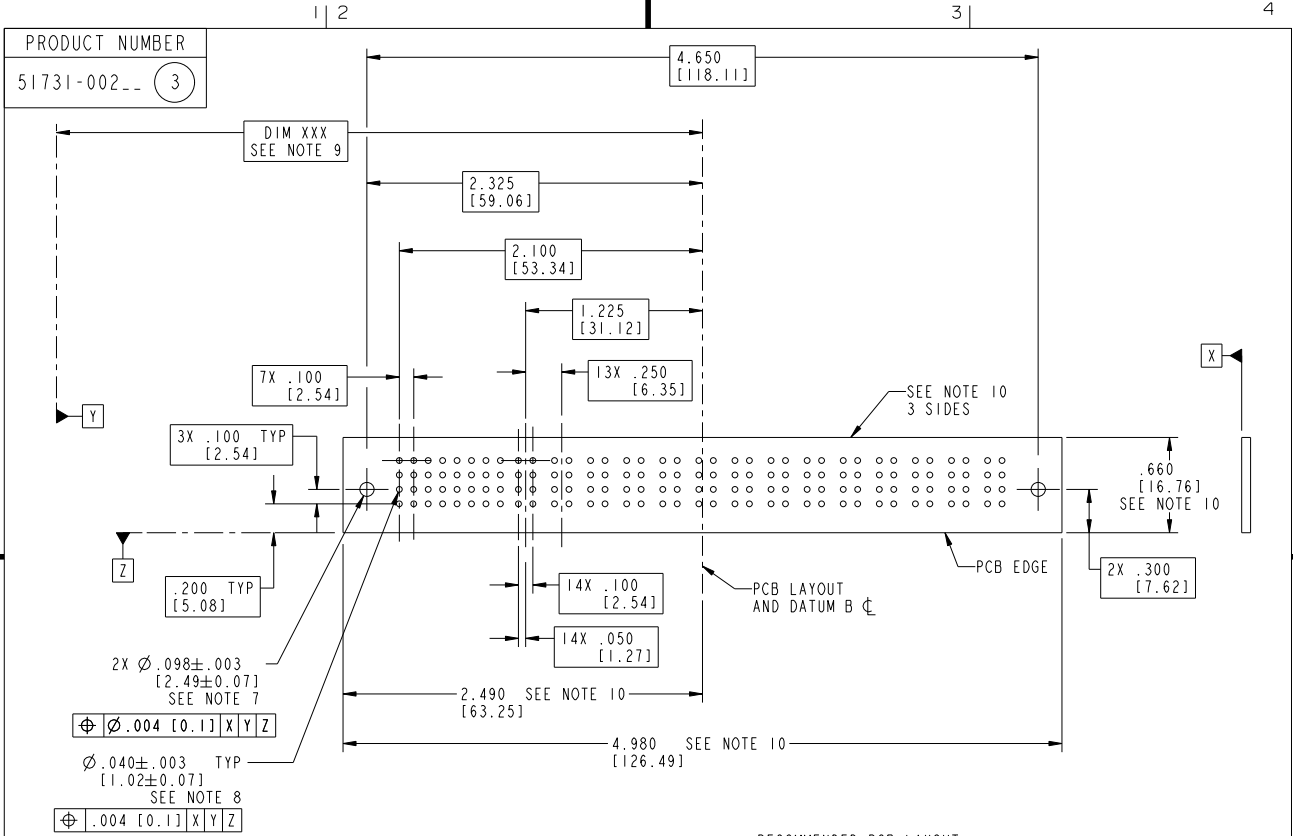
STATUS: Released

Printed: Dec 20, 2010

Tous droits strictement réservés. Reproduction ou communication à des tiers interdite sans la permission écrite du propriétaire. Propriété de c FCI. Droits de reproduction FCI.



All rights strictly reserved. Reproduction or issue to third parties in any form whatsoever is not permitted without written authority from the proprietor. Property of FCI. Copyright FCI.



RECOMMENDED PCB LAYOUT

mat'l code		SEE NOTE 2		tolerances unless otherwise specified		CUSTOMER		FCI		www.fciconnect.com	
ltr	ecn no.	dr	date	linear	.XX±.01/0.X±0.3	projection	COPY	title			
F				angles	.XXX±.005/0.XX±0.13			32S + 14P			
				dr	.XXXX±.0020/0.XXX±0.051		INCH/MM		RIGHT ANGLE SOLDER HEADER		
				enr	J. SHAFFER 03-26-02	scale		product family	PwrBlade	code	213
				chr	M. MOSTOLLER 03-26-02	1:1		size	dwg no	sheet	3 of 4
				appd	M. MOSTOLLER 03-26-02			A	51731-002		
sheet index	revision sheet										

1 | 2

Pro/E

PDM: Rev:F

STATUS: Released

Printed: Dec 20, 2010

1 | 2

3 |

4

PRODUCT NUMBER

51731-002_ (3)

NOTES:

1. DIMENSIONS AND TOLERANCES ARE IN ACCORDANCE WITH ASME Y14.5M, 1994 UNLESS OTHERWISE SPECIFIED.

CONNECTOR NOTES:

- 2. HOUSING MATERIAL: UL 94 V-0 GLASS FILLED HIGH-TEMP THERMOPLASTIC
POWER CONTACT MATERIAL: COPPER ALLOY
SIGNAL PIN MATERIAL: COPPER ALLOY
- 3. 51731-002;51731-002LF;51731-002GLF PLATING SPEC. SEE PRINT:10064183
- 4. MANUFACTURER'S NAME, P/N, AND DATE CODE TO APPEAR ON THIS SURFACE.
- 5. PRODUCT SPECIFICATION GS-12-149.
APPLICATION SPECIFICATION BUS-20-067.

PCB NOTES:

- 6. ALL HOLE DIAMETERS ARE FINISHED HOLE SIZE.
- 7. MOUNTING HOLES, WHERE APPLICABLE, ARE UNPLATED.
- 8. $\varnothing .0453 \pm 0.0010$ [1.151 ± 0.025] DRILLED HOLES PLATED WITH 0.0003 [0.008] MIN SnPb OR Sn OVER $.001$ [0.03] TO $.003$ [0.08] Cu PLATING TO ACHIEVE $\varnothing .040 \pm .003$ [$1.02 \pm .07$] HOLE.
- 9. "DIM XXX" TO BE DETERMINED BY THE CUSTOMER.
- 10. CONNECTOR KEEP-OUT ZONE.

mat'l code				SEE NOTE 2		tolerances unless otherwise specified		CUSTOMER		FCI		www.fciconnect.com	
ltr	ech no.	dr	date	linear		linear		COPY		title			
F						$.XX \pm .01/0.X \pm 0.3$		projection		32S + 14P			
				angles		$.XXX \pm .005/0.XXX \pm 0.13$				RIGHT ANGLE SOLDER HEADER			
				dr	J. SHAFFER	03-26-02		INCH/MM		product family	PwrBlade	code	213
				enr	M. MOSTOLLER	03-26-02		scale		size	dwg no	sheet	4 of 4
				chr	M. MOSTOLLER	03-26-02		1:1		A	51731-002		
				appd	M. MOSTOLLER	03-26-02							
sheet index	revision sheet												

1 | 2

Pro/E

PDM: Rev:F

STATUS: Released

Printed: Dec 20, 2010

Tous droits strictement reserves. Reproduction ou communication a des tiers interdite sous quelque forme que ce soit sans autorisation ecrite du proprietaire. Propriete de c FCI. Droits de reproduction FCI.



All rights strictly reserved. Reproduction or issue to third parties in any form whatsoever is not permitted without written authority from the proprietor. Property of FCI. Copyright FCI.