

Excellent Integrated System Limited

Stocking Distributor

Click to view price, real time Inventory, Delivery & Lifecycle Information:

[FCI](#)
[51939-059LF](#)

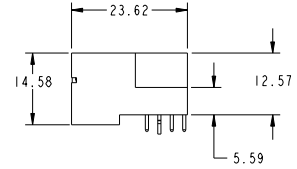
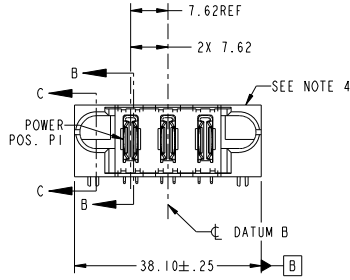
For any questions, you can email us directly:
sales@integrated-circuit.com

Tous droits strictement réservés. Reproduction ou communication à des tiers interdite sous quelque forme que ce soit sans autorisation écrite du propriétaire. Propriété de FCI. Droits de reproduction FCI.

All rights strictly reserved. Reproduction or issue to third parties in any form whatever is not permitted without written authority from the proprietor. Property of FCI. Copyright FCI.



| | | | | | |
|---------------------------------------|-------|----|----|----|----|
| PRODUCT NO. 51939-059-- NOTE: 3 | POWER | | | | |
| | E1 | P1 | P2 | P3 | E2 |



| CODE | DIM "M" MATING LENGTH | CONTACT TYPE |
|------|-----------------------|--------------|
| PA | [N/A] | POWER |
| HA | [N/A] | HOLD-DOWN |

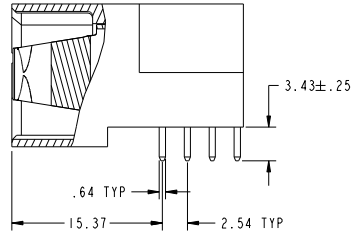
| SEE NOTE | | | | tolerances unless otherwise specified | | CUSTOMER | |
|-------------|----------------|-----|----------|---------------------------------------|-----------------------|------------|---------------------------|
| ltr | ecm no. | dr | date | linear | 0.X ± 0.5 | COPY | www.fciconnect.com |
| A | V03-0478 | TAB | 04/29/03 | linear | 0.XX ± 0.25 | projection | title |
| B | DG05-0056 | LH | 03/29/05 | linear | 0.XXX ± 0.10 | projection | RIGHT ANGLE SOLDER HEADER |
| C | DG06-0014 | JMG | 01/10/06 | angles | 0° ± 2° | projection | product family |
| D | DG07-0498 | JW | 09/10/08 | dr | T. BRUNGARD 04/29/03 | MM | PwrBlade |
| | | | | engr | M. MOSTOLLER 04/29/03 | size | code |
| | | | | chr | M. MOSTOLLER 04/29/03 | dwg no | 213 |
| | | | | oppd | M. MOSTOLLER 04/29/03 | scale | 1 of 4 |
| sheet index | revision sheet | D | D | D | D | 1:1 | |
| 1 | 2 | 3 | 4 | | | | |

cage code 22526

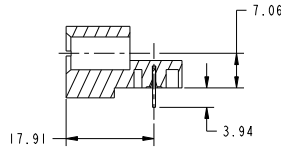
Tous droits strictement réservés. Reproduction ou communication à des tiers interdite sous quelque forme que ce soit sans autorisation écrite du propriétaire. Propriété de FCI. Droits de reproduction FCI.

All rights strictly reserved. Reproduction or issue to third parties in any form whatever is not permitted without written authority from the proprietor. Property of FCI. Copyright FCI.

PRODUCT NUMBER
51939-059...
NOTE: 3



△ BROKEN-OUT SECTION B-B
SCALE 2:1



| mat'l code | | SECTION | | NOTE | | tolerances unless otherwise specified | | CUSTOMER | | FCI | |
|-------------|----------------|---------|------|--------|-----------------------|---------------------------------------|------|--------------------|--|---------------------------|--|
| lfr | ecm no. | dr | date | linear | 0.X ± 0.5 | projection | COPY | www.fciconnect.com | | title | |
| D | | | | | 0.XX ± 0.25 | MM | MM | 3P | | RIGHT ANGLE SOLDER HEADER | |
| | | | | angles | 0° ± 2° | scale | 1:1 | product family | | PwrBlade | |
| | | | | dr | T. BRUNGARD 04/29/03 | | | size | | dwg no | |
| | | | | enr | M. MOSTOLLER 04/29/03 | | | A | | 51939-059 | |
| | | | | chr | M. MOSTOLLER 04/29/03 | | | | | 213 | |
| | | | | oppd | M. MOSTOLLER 04/29/03 | | | | | sheet | |
| sheet index | revision sheet | | | | | | | | | 2 | |

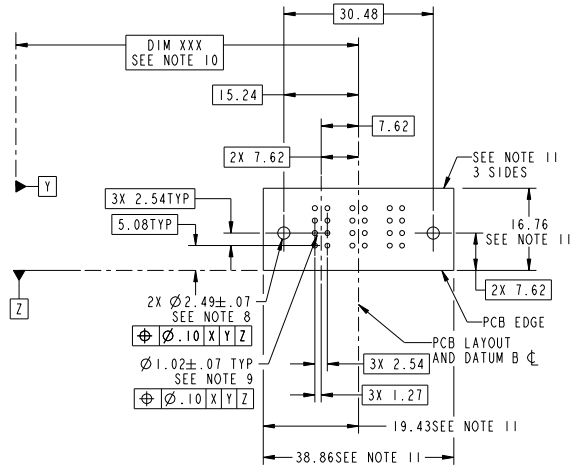
Pro/E

cage code 22526

Tous droits strictement réservés. Reproduction ou communication à des tiers interdite sous quelque forme que ce soit sans autorisation écrite du propriétaire. Propriété de FCI. Droits de reproduction FCI.

All rights strictly reserved. Reproduction or issue to third parties in any form whatever is not permitted without written authority from the proprietor. Property of FCI. Copyright FCI.

PRODUCT NUMBER
51939-059...
NOTE: 3



RECOMMENDED PCB LAYOUT

| mat'l code | | SEE NOTE | | tolerances unless otherwise specified | | CUSTOMER | |
|-------------|----------------|----------|------|---------------------------------------|-----------------------|----------------|---------------------------|
| ltr | ecm no. | dr | date | linear | 0.X ± 0.5 | COPY | www.fciconnect.com |
| D | | | | | 0.XX ± 0.25 | projection | title |
| | | | | angles | 0.XXX ± 0.10 | | 3P |
| | | | | dr | 0° ± 2° | MM | RIGHT ANGLE SOLDER HEADER |
| | | | | engr | T. BRUNGARD 04/29/03 | product family | PwrBlade |
| | | | | chr | M. MOSTOLLER 04/29/03 | size | dwg no |
| | | | | oppd | M. MOSTOLLER 04/29/03 | scale | 51939-059 |
| sheet index | revision sheet | | | | | 1:1 | code |
| | | | | | | | 213 sheet |
| | | | | | | | 3 |
| | | | | | | | cage code |
| | | | | | | | 22526 |

Pro/E

cage code 22526

Tous droits strictement réservés. Reproduction ou communication à des tiers interdite sous quelque forme que ce soit sans autorisation écrite du propriétaire. Propriété de FCI. Droits de reproduction FCI.



All rights strictly reserved. Reproduction or issue to third parties in any form whatever is not permitted without written authority from the proprietor. Property of FCI. Copyright FCI.

PRODUCT NUMBER
51939-059-
NOTE: 3

- NOTES:**
1. DIMENSIONS AND TOLERANCES ARE IN ACCORDANCE WITH ASME Y14.5M, 1994 UNLESS OTHERWISE SPECIFIED.
- CONNECTOR NOTES:**
- ② HOUSING MATERIAL: UL 94 V-0 GLASS FILLED HIGH-TEMP THERMOPLASTIC
POWER CONTACT MATERIAL: COPPER ALLOY
SIGNAL PIN MATERIAL: COPPER ALLOY
 - 3. PLATING
SEE ITEM 1 & 2 IN PRINT 10064183 FOR PLATING SPEC OF 51939-059; 51939-059LF RESPECTIVELY.
 - ④ MANUFACTURER'S NAME, P/N, AND DATE CODE TO APPEAR ON THIS SURFACE.
 - 5. PRODUCT SPECIFICATION GS-12-149.
APPLICATION SPECIFICATION BUS-20-067.
 - 6. PACKAGED IN TRAYS.
- PCB NOTES:**
- 7. ALL HOLE DIAMETERS ARE FINISHED HOLE SIZE.
 - ⑧ MOUNTING HOLES, WHERE APPLICABLE, ARE UNPLATED.
 - ⑨ $\varnothing 1.151 \pm 0.025$ DRILLED HOLES PLATED WITH 0.008 MIN SnPb OR Sn OVER 0.03 TO 0.08 Cu PLATING TO ACHIEVE $\varnothing 1.02 \pm .07$ HOLE.
 - ⑩ "DIM XXX" TO BE DETERMINED BY THE CUSTOMER.
 - ⑪ CONNECTOR KEEP-OUT ZONE.
 - 12. A Δ SYMBOL WILL BE NEXT TO ANY DIMENSION, VIEW, OR NOTE WHICH HAS BEEN MODIFIED WITH THE CURRENT DRAWING REVISION.

| mat'l code | | SEE NOTE | | tolerances unless otherwise specified | | CUSTOMER | |
|-------------|----------------|----------|------|---------------------------------------|----------------------------|-------------------------|---------------------------|
| ltr | ecm no. | dr | date | linear | angular | projection | www.fciconnect.com |
| D | | | | $0.X \pm 0.5$ | $0.XX \pm 0.25$ | | 3P |
| | | | | $0.XXX \pm 0.10$ | $0^\circ \pm 2^\circ$ | | RIGHT ANGLE SOLDER HEADER |
| | | | | dr T. BRUNGARD 04/29/03 | engr M. MOSTOLLER 04/29/03 | product family PwrBlade | code 213 |
| | | | | chr M. MOSTOLLER 04/29/03 | opdd M. MOSTOLLER 04/29/03 | size A | sheet 4 |
| sheet index | revision sheet | | | | | scale 1:1 | |

Pro/E 3 cage code 22526 4