

Excellent Integrated System Limited

Stocking Distributor

Click to view price, real time Inventory, Delivery & Lifecycle Information:

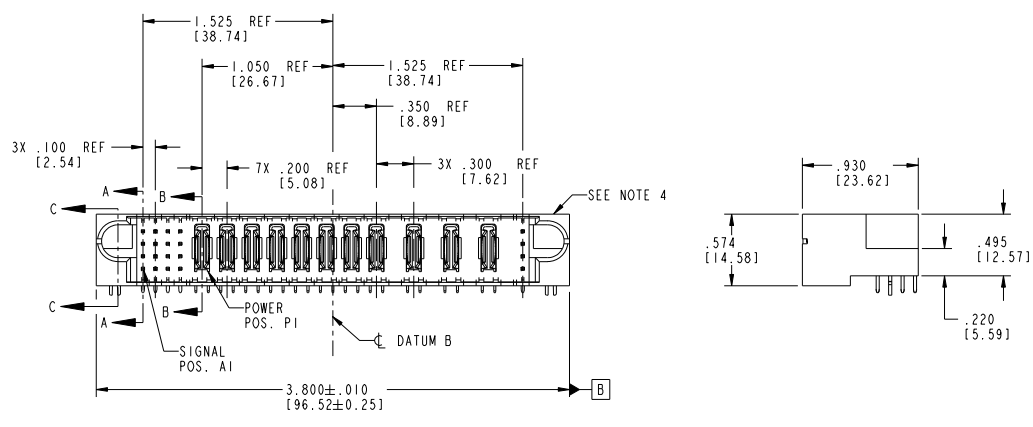
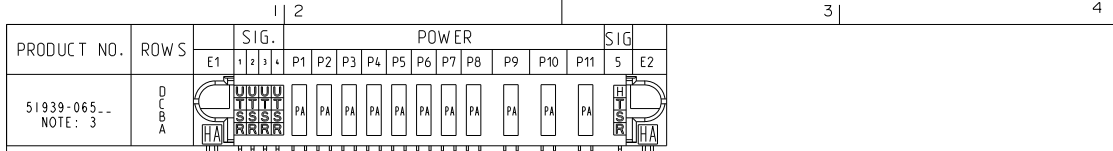
[FCI](#)
[51939-065](#)

For any questions, you can email us directly:
sales@integrated-circuit.com

Tous droits strictement réservés. Reproduction ou communication, en des lieux interdite sans autorisation écrite du propriétaire. Propriété de FCI. Droits de reproduction FCI.



All rights strictly reserved. Reproduction or issue in third parties, in any form without written authority from the proprietor. Property of FCI. Copyright FCI.



CODE	DIM "M" MATING LENGTH	CONTACT TYPE
H	.220 [5.59]	SIGNAL
R	.270 [6.86]	SIGNAL
S	.270 [6.86]	SIGNAL
T	.270 [6.86]	SIGNAL
U	.270 [6.86]	SIGNAL
PA	N/A [N/A]	POWER
HA	N/A [N/A]	HOLD-DOWN

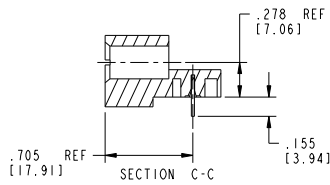
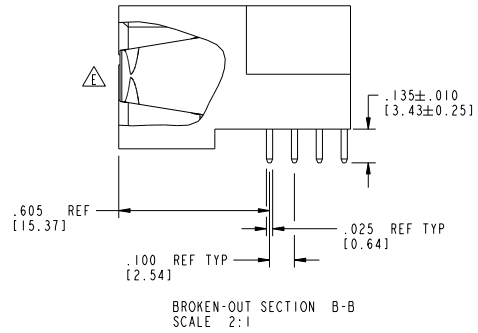
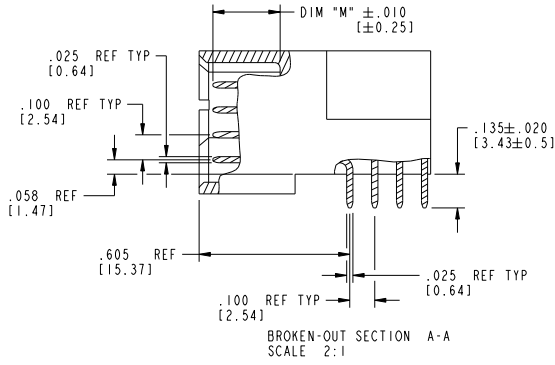
mat'l code		SEE NOTE 2		tolerances unless otherwise specified	
ltr	ecm no.	dr	date	linear	XX±.01/0.XX±0.13
A	V03-0586	TAB	05/21/03	linear	XXX±.005/0.XX±0.13
B	V03-0650	TAB	06/13/03	linear	XXX±.0020/0.XX±0.051
C	V03-1166	TAB	10/27/03	angles	0°±
D	DG06-0014	JMG	01/11/06	dr	I. BRUNGARD 05/21/03
E	DG06-0273	WD	01/02/09	enr	M. MOSTOLLER 05/21/03
				chr	M. MOSTOLLER 05/21/03
				oppd	M. MOSTOLLER 05/21/03

CUSTOMER		FCI	
www.fciconnect.com		www.fciconnect.com	
COPY		projection	
title 16S + 8P + 3ACP + 4S		RIGHT ANGLE SOLDER HEADER	
product family PwrBlade		code 213	
size dwg no 51939-065		sheet 1 of 4	
scale 1:1		cage code 22526	

Tous droits strictement réservés. Reproduction ou communication de ces lignes interdite sans autorisation écrite du propriétaire. Propriété de FCI. Droits de reproduction FCI.

All rights strictly reserved. Reproduction or issue in third parties in any form without written authority from the proprietor. Property of FCI. Copyright FCI.

PRODUCT NUMBER
51939-065
NOTE: 3



mat'l code		SEE NOTE 2	tolerances unless otherwise specified		CUSTOMER	FCI		www.fciconnect.com	
ltr	ecm no.	dr	date	linear	VI±.01/0.VI±0.3	COPY		title	
E				linear	VII±.005/0.VII±0.13	projection		16S + 8P + 3ACP + 4S	
				angles	VIII±.0020/0.VIII±0.051	INCH/MM		RIGHT ANGLE SOLDER HEADER	
				dr	0°±	scale		product family PwrBlade code	
				enr	T. BRUNGARD 05/21/03	1:1		size dwg no 213	
				chr	M. MOSTOLLER 05/21/03	A		51939-065 sheet	
				oppd	M. MOSTOLLER 05/21/03			2 of 4	
sheet index	revision sheet								

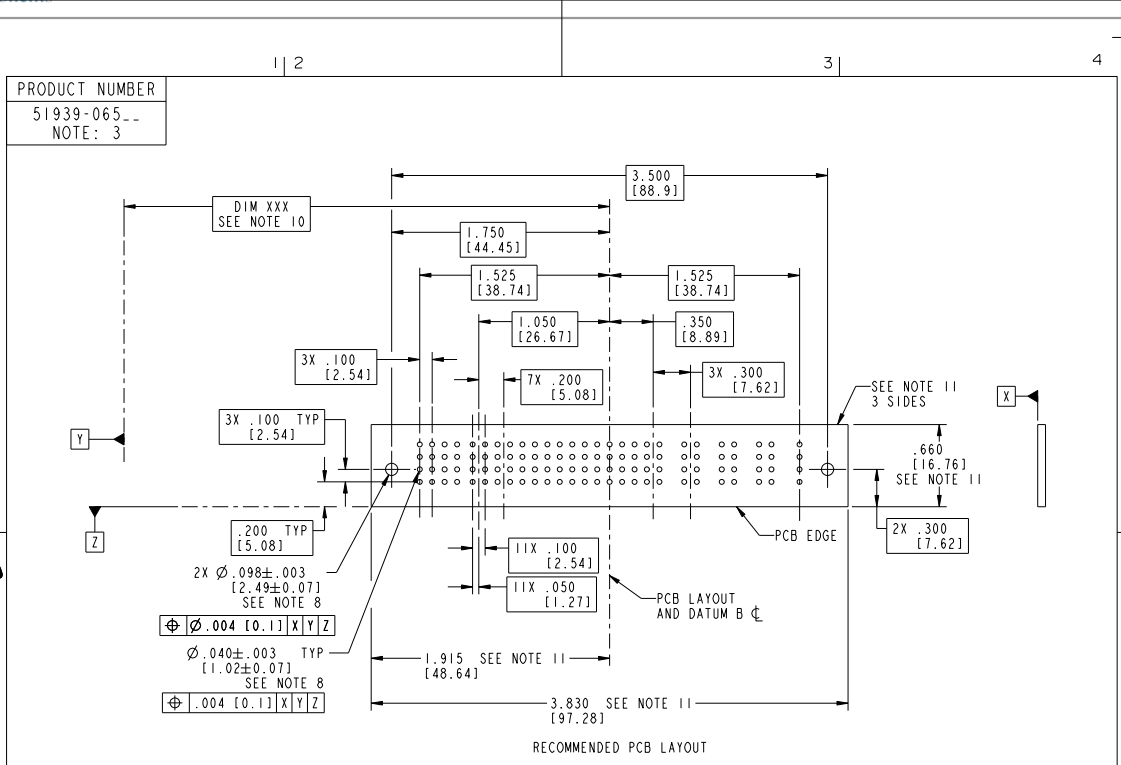
Pro/E

cage code 22526

Tous droits strictement réservés. Reproduction ou communication de ces lignes interdite sans autorisation écrite du propriétaire. Propriété de FCI. Droits de reproduction FCI.



All rights strictly reserved. Reproduction or issue in third parties in any form without written permission from the proprietor. Property of FCI. Copyright FCI.



mat'l code		SEE NOTE 2	tolerances unless otherwise specified	CUSTOMER	www.fciconnect.com title 16S + 8P + 3ACP + 4S RIGHT ANGLE SOLDER HEADER
ltr	ecn no.	dr	date	COPY	
E				projection	product family PwrBlade code 213
				linear $.XX \pm .01/0.XX + 0.3$	size dwg no 51939-065 sheet 3 of 4
				angles $.XXX \pm .002/0.XX + 0.05$	
				dr I. BRUNGARD 05/21/03	
				enr M. MOSTOLLER 05/21/03	
				chr M. MOSTOLLER 05/21/03	
				appd M. MOSTOLLER 05/21/03	
sheet index	revision sheet			scale 1:1	

Pro/E 3 cage code 22526 4

Tous droits strictement réservés. Reproduction ou communication de ces lignes interdite sans aucune forme que ce soit sans autorisation écrite du propriétaire. Propriété de FCI. Droits de reproduction FCI.

FCI
 All rights strictly reserved. Reproduction or issue in third parties in any form whatever is not permitted without written authority from the proprietor. Property of FCI. Copyright FCI.

PRODUCT NUMBER
 51939-065__
 NOTE: 3

NOTES:

1. DIMENSIONS AND TOLERANCES ARE IN ACCORDANCE WITH ASME Y14.5M, 1994 UNLESS OTHERWISE SPECIFIED.

CONNECTOR NOTES:

- 2. HOUSING MATERIAL: UL 94 V-0 GLASS FILLED HIGH-TEMP THERMOPLASTIC
 POWER CONTACT MATERIAL: COPPER ALLOY
 SIGNAL PIN MATERIAL: COPPER ALLOY
 - 3. SEE ITEM 1 & 2 IN PRINT 10064183 FOR PLATING SPEC OF 51939-065 AND 51939-065LF RESPECTIVELY.
 - 4. MANUFACTURER'S NAME, P/N, AND DATE CODE TO APPEAR ON THIS SURFACE.
 - 5. PRODUCT SPECIFICATION GS-12-149.
 APPLICATION SPECIFICATION BUS-20-067.
 - 6. PACKAGED IN TRAYS.
- PCB NOTES:**
- 7. ALL HOLE DIAMETERS ARE FINISHED HOLE SIZE.
 - 8. MOUNTING HOLES, WHERE APPLICABLE, ARE UNPLATED.
 - 9. $\varnothing .0453 \pm .0010$ [1.151 \pm 0.025] DRILLED HOLES PLATED WITH
 .0003 [0.008] MIN SnPb OVER .001 [0.03]
 TO .003 [0.08] Cu PLATING TO ACHIEVE
 $\varnothing .040 \pm .003$ [1.02 \pm .07] HOLE.
 - 10. "DIM XXX" TO BE DETERMINED BY THE CUSTOMER.
 - 11. CONNECTOR KEEP-OUT ZONE.
 - 12. A Δ SYMBOL WILL BE NEXT TO ANY DIMENSION, VIEW, OR NOTE WHICH HAS BEEN MODIFIED WITH THE CURRENT DRAWING REVISION.

mat'l code		SEE NOTE 2	tolerances unless otherwise specified	CUSTOMER	FCI	
ltr	ecm no.	dr	date	linear	projection	www.fciconnect.com
E				$.XX \pm .01 / 0 .XX \pm 0.3$		title 16S + 8P + 3ACP + 4S
				$.XXX \pm .005 / 0 .XX \pm 0.13$		RIGHT ANGLE SOLDER HEADER
				angles	$0^\circ \pm 0^\circ$	product family PwrBlade
				dr	T. BRUNGARD 05/21/03	code 213
				enrg	M. MOSTOLLER 05/21/03	sheet 4 of 4
				chr	M. MOSTOLLER 05/21/03	
				oppd	M. MOSTOLLER 05/21/03	
sheet index	revision sheet					

cage code 22526