

Excellent Integrated System Limited

Stocking Distributor

Click to view price, real time Inventory, Delivery & Lifecycle Information:

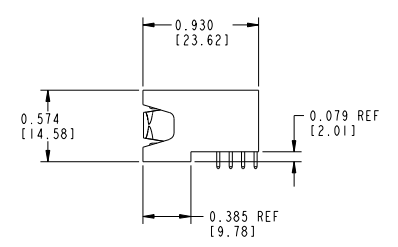
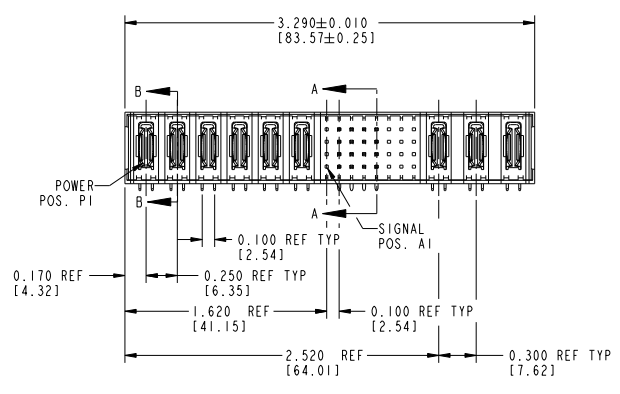
[FCI](#)
[51935-001](#)

For any questions, you can email us directly:
sales@integrated-circuit.com

Tous droits strictement réservés. Reproduction ou communication, en des lieux interdite sans aucune forme que ce soit sans autorisation écrite du propriétaire. Propriété de FCI. Droits de reproduction FCI.

All rights strictly reserved. Reproduction or issue in any form wherever is not permitted without written authority from the proprietor. Property of FCI. Copyright FCI.

PRODUCT No.	ROWS	POWER						SIGNAL								POWER			E2
		E1	P1	P2	P3	P4	P5	P6	1	2	3	4	5	6	7	8	P7	P8	
51935-001...	D C B A	PA	PA	PA	PA	PA	PA	X H U U X X X	X T T T X X X	X S S S X X X	X R R R X X X						PA	PA	PA



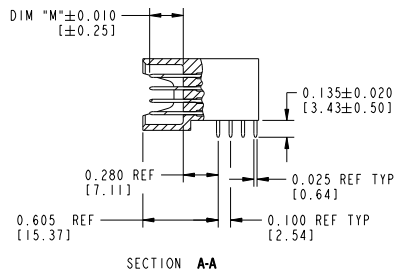
CODE	DIM "M" MATING LENGTH ±0.010	CONTACT TYPE
H	0.220 [5.59]	SIGNAL
R	0.270 [6.86]	SIGNAL
S	0.270 [6.86]	SIGNAL
T	0.270 [6.86]	SIGNAL
U	0.270 [6.86]	SIGNAL
PA	N/A [N/A]	POWER
X	OMITTED	OMITTED

mat'l code				SEE NOTE 1	tolerances unless otherwise specified	CUSTOMER COPY	FCI	www.fciconnect.com
ltr	ecm no.	dr	date	linear	XX±.01/0.XX±0.13	projection		
A	V12127	JRW	7/31/01		XXX±.005/0.XX±0.13			
B	V12156	JRW	8/14/01		XXX±.0020/0.XX±0.051			
C	DG06-0005	JMG	01/06/06	angles	0°±			
D	DG08-0273	WD	12/18/08	dr	J. WITMER 7/31/01	INCH/MM		
				enr	J. ALLISON 7/31/01	scale		
				chr	J. ALLISON 7/31/01	1:1		
				oppd	J. ALLISON 7/31/01			
sheet index	revision sheet	D	D					
1	2							

product family	PwrBlade	code
6P + 32S + 3P		213
RIGHT ANGLE SOLDER HEADER		sheet 1 OF 2
size	dwg no	
A	51935-001	
code	code	
	22526	

Tous droits strictement réservés. Reproduction ou communication, en des lieux interdites sans autorisation écrite de FCI. Droits de reproduction FCI.

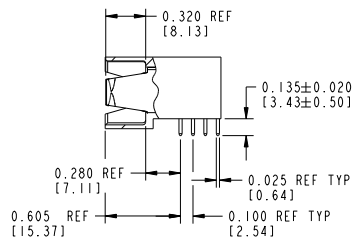
PRODUCT NUMBER
51935-001--



SECTION A-A



All rights strictly reserved. Reproduction or issue in third parties in any form without written authority from the proprietor. Property of FCI. Copyright FCI.



SECTION B-B

CONNECTOR NOTES:

1. HOUSING MATERIAL: UL 94 V-0 GLASS FILLED HIGH TEMP THERMOPLASTIC
POWER CONTACT MATERIAL: COPPER ALLOY
SIGNAL CONTACT MATERIAL: COPPER ALLOY

2. SEE ITEM 1 & 2 IN PRINT 10064183 FOR PLATING SPEC OF 51935-001 AND 51935-001LF RESPECTIVELY.

3. "MANUFACTURER'S" NAME, P/N, AND DATE CODE TO APPEAR ON THIS SURFACE

4. PRODUCT SPECIFICATION GS-12-149

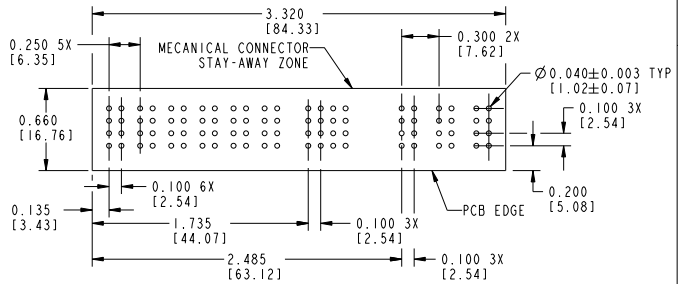
PCB NOTES:

5. ALL DIMENSIONS ARE BASIC UNLESS OTHERWISE SPECIFIED.

6. ALL THROUGH HOLES ARE LOCATED WITH A TRUE POSITION OF $\varnothing 0.004$ [0.10]

7. ALL HOLE DIAMETERS ARE FINISHED HOLE SIZE

8. $\varnothing 0.0453 \pm 0.0010$ [1.151 ± 0.025] DRILLED HOLES PLATED WITH 0.0003 [0.008] MIN SnPb OVER 0.001 [0.03] TO 0.003 [0.08] Cu PLATING TO ACHIEVE A $\varnothing 0.040 \pm 0.003$ [1.02 ± 0.07] HOLE.



RECOMMENDED PCB LAYOUT

mat'l code				SEE NOTE 1		tolerances unless otherwise specified		CUSTOMER COPY		FCI	
ltr	ecm no.	dr	date	linear	XX±.01/0.XX±0.3	projection	www.fciconnect.com		title		
0				angles	XXX±.005/0.XX±0.13	INCH/MM	6P + 32S + 3P		RIGHT ANGLE SOLDER HEADER		
				dr	XXX±.0020/0.XX±0.051	scale	product family		PwrBlade		code
				enr	0 ± 2°	1:1	size		dwg no		213
				chr	J. WITMER 7/31/01		51935-001				sheet
				oppd	J. ALLISON 7/31/01						2
sheet index	revision sheet										

Pro/E

cage code 22526