

Excellent Integrated System Limited

Stocking Distributor

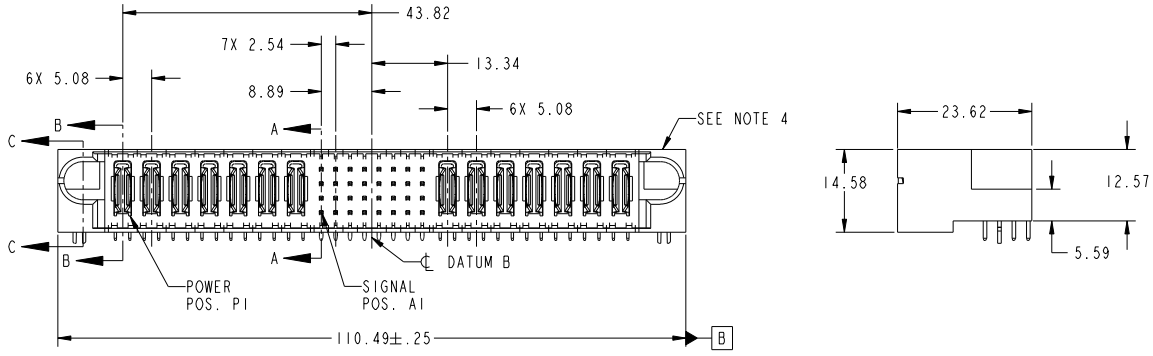
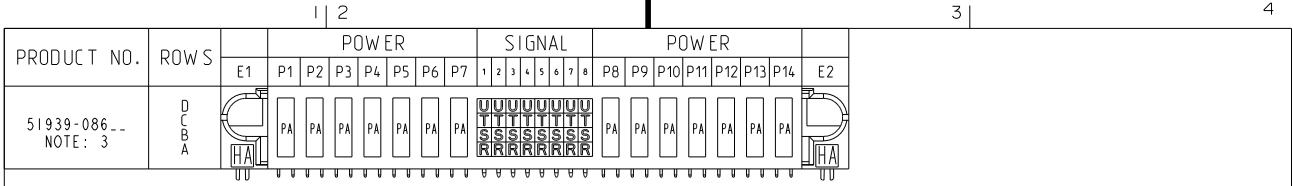
Click to view price, real time Inventory, Delivery & Lifecycle Information:

[FCI](#)
[51939-086](#)

For any questions, you can email us directly:
sales@integrated-circuit.com

Tous droits strictement réservés. Reproduction ou communication à des tiers
interdite sous quelque forme que ce soit sans autorisation écrite du propriétaire.
Propriété de FCI. Droits de reproduction FCI.

All rights strictly reserved. Reproduction or issue to third parties in any
form whatever is not permitted without written authority from the proprietor.
Property of FCI. Copyright FCI.



CODE	DIM "M" MATING LENGTH	CONTACT TYPE
R	[6.86]	SIGNAL
S	[6.86]	SIGNAL
T	[6.86]	SIGNAL
U	[6.86]	SIGNAL
PA	[N/A]	POWER
HA	[N/A]	HOLD-DOWN

mal'tl code		SEE NOTE		tolerances unless otherwise specified		CUSTOMER	
ltr	ech no.	dr	date	linear	0.X ±0.5	COPY	www.fciconnect.com title 7P + 32S + 7P RIGHT ANGLE SOLDER HEADER product family PwrBlade code 213 size dwg no 51939-086 sheet 1 of 4
A	V03-1128	TAB	10/20/03	angles	0.XX ±0.25	projection	
B	DG05-0171	GuoJM	06/19/05		0.XXX ±0.10	MM	
C	DG05-0435	SW	11/03/05		0° ±2°	scale 1:1	
D	DG07-0498	JW	09/15/08	dr	T. BRUNGARD 10/20/03		
				enr	M. GRAY 10/20/03		
				chr	M. GRAY 10/20/03		
				appd	M. GRAY 10/20/03		
sheet index	revision sheet	1	2	3	4		

mal'tl code		SEE NOTE		tolerances unless otherwise specified		CUSTOMER	
ltr	ech no.	dr	date	linear	0.X ±0.5	COPY	www.fciconnect.com title 7P + 32S + 7P RIGHT ANGLE SOLDER HEADER product family PwrBlade code 213 size dwg no 51939-086 sheet 1 of 4
A	V03-1128	TAB	10/20/03	angles	0.XX ±0.25	projection	
B	DG05-0171	GuoJM	06/19/05		0.XXX ±0.10	MM	
C	DG05-0435	SW	11/03/05		0° ±2°	scale 1:1	
D	DG07-0498	JW	09/15/08	dr	T. BRUNGARD 10/20/03		
				enr	M. GRAY 10/20/03		
				chr	M. GRAY 10/20/03		
				appd	M. GRAY 10/20/03		
sheet index	revision sheet	1	2	3	4		

1 | 2

Pro/E

PDM: Rev: D

STAT **US: Released**

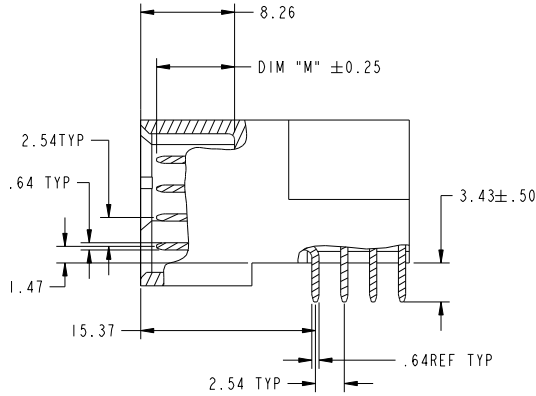
Printed: Dec 20, 2010

Tous droits strictement réservés. Reproduction ou communication à des tiers interdite sous quelque forme que ce soit sans autorisation écrite du propriétaire. Propriété de FCI. Droits de reproduction FCI.

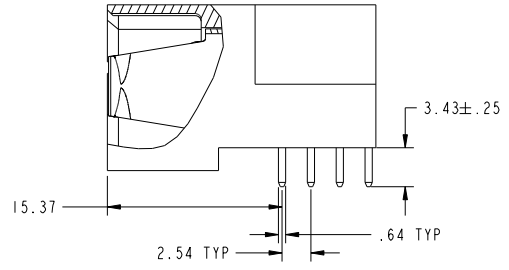
All rights strictly reserved. Reproduction or issue to third parties in any form whatsoever is not permitted without written authority from the proprietor. Property of FCI. Copyright FCI.



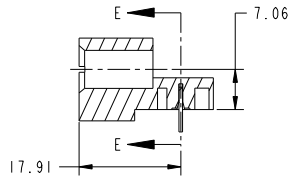
PRODUCT NUMBER
51939-086
NOTE: 3



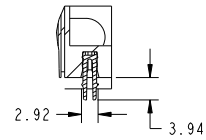
BROKEN-OUT SECTION A-A
SCALE 2:1



BROKEN-OUT SECTION B-B
SCALE 2:1



SECTION C-C



SECTION E-E

mat'l code		SEE NOTE		tolerances unless otherwise specified		CUSTOMER		FCI	
lfr	ecm no.	dr	date	linear	0.X ±0.5	COPY		www.fciconnect.com	
D					0.XX ±0.25	projection		title 7P + 32S + 7P	
				angles	0.XXX ±0.10			RIGHT ANGLE SOLDER HEADER	
				dr	T. BRUNGARD 10/20/03	MM		product family	PwrBlade
				enr	M. GRAY 10/20/03	scale	1:1	size	213
				chr	M. GRAY 10/20/03			dwg no	51939-086
				appd	M. GRAY 10/20/03			sheet	2
sheet index	revision sheet							cage code	22536

1 | 2

Pro/E

PDM: Rev: D

STATUS: **Released**

Printed: Dec 20, 2010

1 | 2

3 |

4

A

A

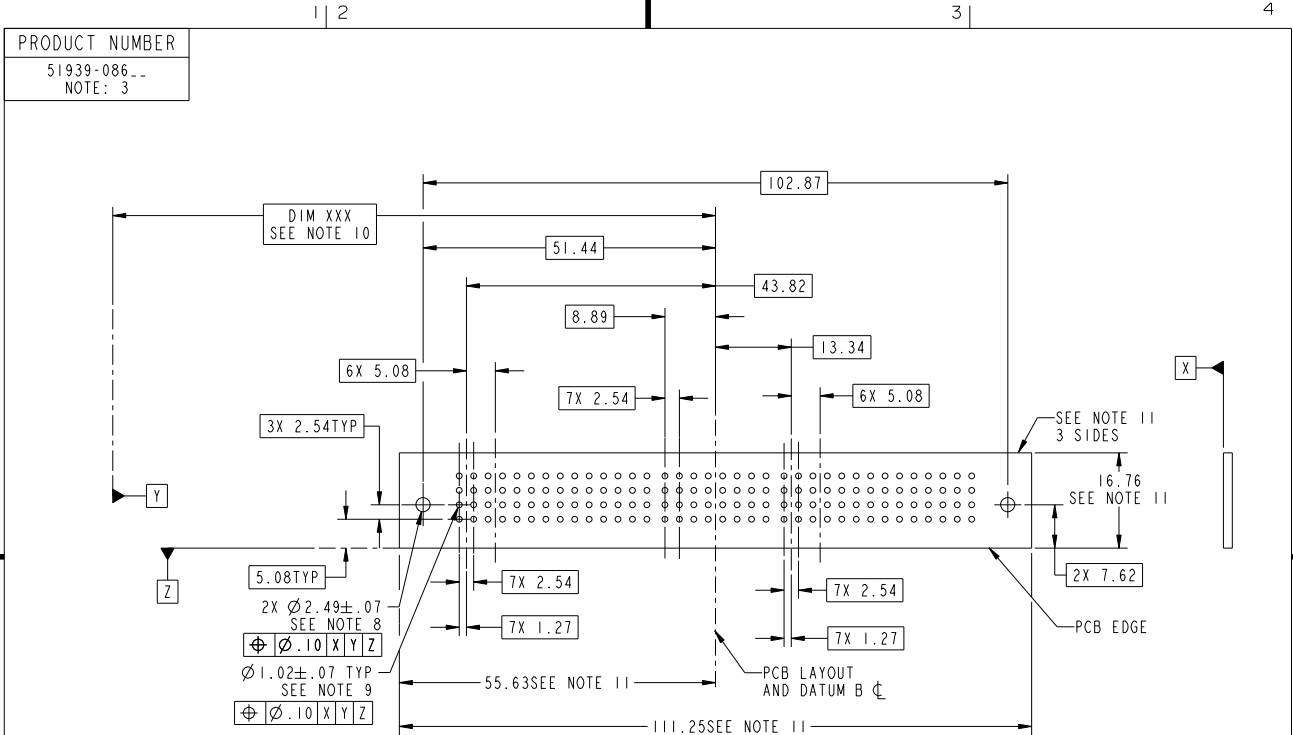
B

B

Tous droits strictement réservés. Reproduction ou communication à des tiers interdite sous quelque forme que ce soit sans autorisation écrite du propriétaire. Propriété de FCI. Droits de reproduction FCI.



All rights strictly reserved. Reproduction or issue to third parties in any form whatsoever is not permitted without written authority from the proprietor. Property of FCI. Copyright FCI.



RECOMMENDED PCB LAYOUT

mat'l code		SEE NOTE		tolerances unless otherwise specified		CUSTOMER		FCI www.fciconnect.com	
ltr	ecn no.	dr	date	linear	0.X ±0.5	projection	title		
D					0.XX ±0.25		7P + 32S + 7P		
				angles	0.XXX ±0.10		RIGHT ANGLE SOLDER HEADER		
					0° ±2°	← MM →	product family	PwrBlade	code
				dr	T. BRUNGARD 10/20/03	scale	size	dwg no	213
				enr	M. GRAY 10/20/03	1:1	A	51939-086	sheet
				chr	M. GRAY 10/20/03				3
				appd	M. GRAY 10/20/03				
sheet index	revision sheet								

Pro/E

PDM: Rev: D

STATUS: **Released**

Printed: Dec 20, 2010

Tous droits strictement réservés. Reproduction ou communication à des tiers interdite sous quelque forme que ce soit sans autorisation écrite du propriétaire. Propriété de FCI. Droits de reproduction FCI.

All rights strictly reserved. Reproduction or issue to third parties in any form whatsoever is not permitted without written authority from the proprietor. Property of FCI. Copyright FCI.



PRODUCT NUMBER
51939-086
NOTE: 3

NOTES:

1. DIMENSIONS AND TOLERANCES ARE IN ACCORDANCE WITH ASME Y14.5M, 1994 UNLESS OTHERWISE SPECIFIED.

CONNECTOR NOTES:

- 2. HOUSING MATERIAL: UL 94 V-0 GLASS FILLED HIGH-TEMP THERMOPLASTIC
POWER CONTACT MATERIAL: COPPER ALLOY
SIGNAL PIN MATERIAL: COPPER ALLOY
 - 3. PLATING:
SEE ITEM I&2 IN PRINT 10064183 FOR PLATING SPEC OF 51939-086; 51939-086LF
 - 4. MANUFACTURER'S NAME, P/N, AND DATE CODE TO APPEAR ON THIS SURFACE.
 - 5. PRODUCT SPECIFICATION GS-12-149.
APPLICATION SPECIFICATION BUS-20-067.
 - 6. PACKAGED IN TRAYS.
- PCB NOTES:
- 7. ALL HOLE DIAMETERS ARE FINISHED HOLE SIZE.
 - 8. MOUNTING HOLES, WHERE APPLICABLE, ARE UNPLATED.
 - 9. $\varnothing 1.151 \pm 0.025$ DRILLED HOLES PLATED WITH 0.008 MIN SnPb OR Sn OVER 0.03 TO 0.08 Cu PLATING TO ACHIEVE $\varnothing 1.02 \pm .07$ HOLE.
 - 10. "DIM XXX" TO BE DETERMINED BY THE CUSTOMER.
 - 11. CONNECTOR KEEP-OUT ZONE.
 - 12. A Δ SYMBOL WILL BE NEXT TO ANY DIMENSION, VIEW, OR NOTE WHICH HAS BEEN MODIFIED WITH THE CURRENT DRAWING REVISION.

mat'l code		SEE NOTE		tolerances unless otherwise specified		CUSTOMER		FCI	
ltr	ecn no.	dr	date	linear	$0.X \pm 0.5$	COPY		www.fciconnect.com	
D					$0.XX \pm 0.25$	projection	title 7P + 32S + 7P		
				angles	$0.XXX \pm 0.10$		RIGHT ANGLE SOLDER HEADER		
				dr	T. BRUNGARD 10/20/03	$0^\circ \pm 2^\circ$		product family	PwrBlade
				enr	M. GRAY 10/20/03		size	dwg no	code
				chr	M. GRAY 10/20/03	scale	A	51939-086	213
				appd	M. GRAY 10/20/03	1:1			sheet
sheet index	revision sheet								4

I | 2

Pro/E

PDM: Rev: D

STATUS: **Released**

Printed: Dec 20, 2010

I | 2

3 |

4

A

A

B

B