

## Excellent Integrated System Limited

Stocking Distributor

Click to view price, real time Inventory, Delivery & Lifecycle Information:

[FCI](#)

[76808-005LF](#)

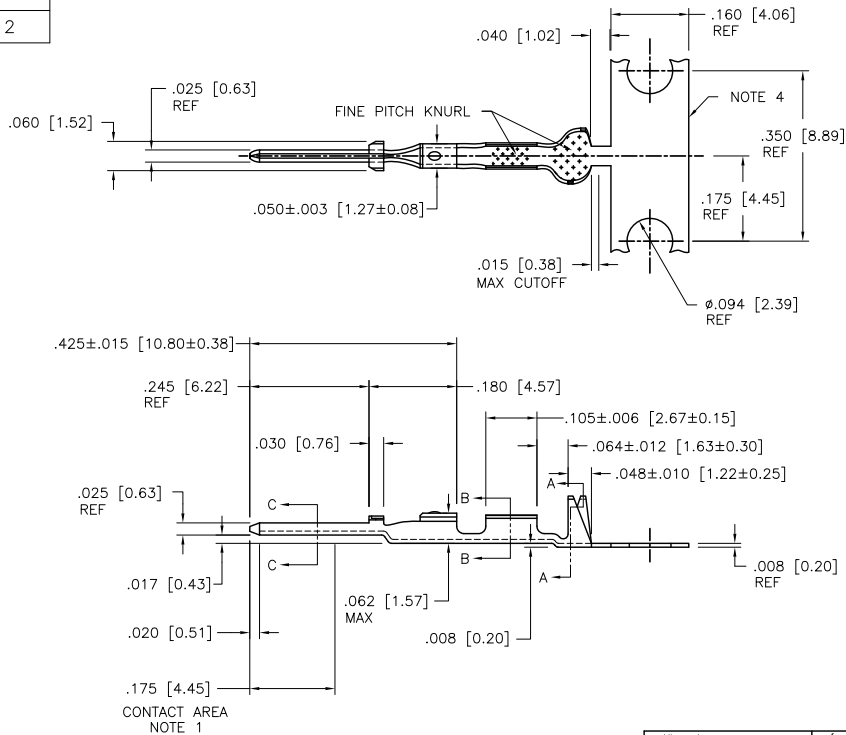
For any questions, you can email us directly:

[sales@integrated-circuit.com](mailto:sales@integrated-circuit.com)



FCIconnect.com

Copyright FCI

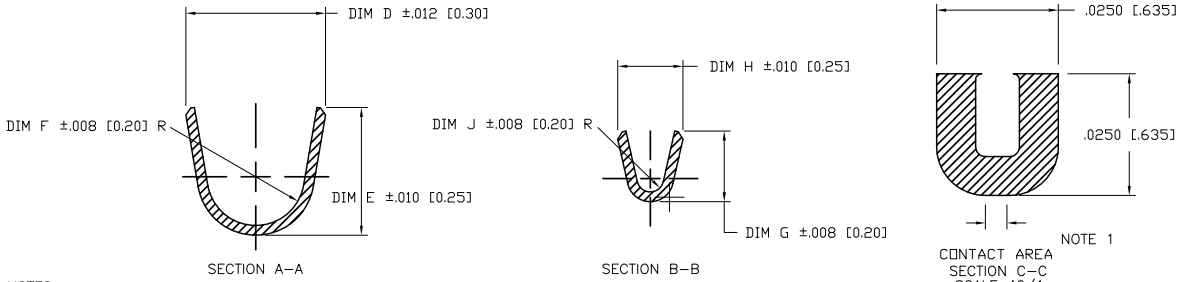


mat'l code	SEE TABLE	surface	tolerance	projection	product family
lit	ecn no	dr	date	tolerances unless otherwise specified	title
H	V09-0453	HTB	2009-10-15	XX-01/XX-3	DUPLEX CTW
-	-	-	-	XXX+005/XXX-B	MALE PIN
C	V41706	SAR	1994-12-8	0°±2'	scale 4:1
D	V04-1158	TAE	2004-12-06	dr	M. CLOUSER 1994-08-22
E	V05-0281	HTB	2005-04-14	ENGR	T. HANNA 1994-08-22
F	V06-0624	HTB	2006-06-30	CH	T. HANNA 1994-08-22
G	V08-0114	HTB	2008-04-01	appd	T. HANNA 1994-08-22
sheet index	revision	H	H	H	
	sheet	1	2	3	

form: A4mmXLC



PRODUCT NUMBER		LOOSE PIECE PRODUCT NUMBER	AWG	PLATING	DIM D	DIM E	DIM F	DIM G	DIM H	DIM J
RIGHT - LEFT	LEFT - RIGHT									
76808-001	76808-004	76808-007	O B S O L E T E							
76808-001LF	76808-004LF	76808-007LF	28-32	NOTE 7	.115 [2.92]	.105 [2.67]	.040 [1.02]	.058 [1.47]	.054 [1.37]	.011 [0.28]
76808-002	76808-005	76808-008	O B S O L E T E							
76808-002LF	76808-005LF	76808-008LF (OBS)	22-26	NOTE 7	.139 [3.53]	.120 [3.05]	.050 [1.27]	.065 [1.65]	.070 [1.78]	.017 [0.43]
76808-003	76808-006	76808-009	O B S O L E T E							
76808-003LF	76808-006LF	76808-009LF	18-20	NOTE 7	.139 [3.53]	.120 [3.05]	.050 [1.27]	.083 [2.11]	.104 [2.64]	.021 [0.53]



- NOTES:
- PLATING: 50u"/1.27u MIN. Ni UNDERPLATE OVER ENTIRE TERMINAL. OVERPLATE 30u"/0.76 MIN. Au IN CONTACT AREA. 50u"/1.27u MIN. TIN-LEAD IN CRIMPING AREA.
  - TERMINAL MAY BE USED WITH MINI LATCH HOUSING.
  - APPLICABLE SPECIFICATION:  
A. BUS-12-098 PRODUCT SPECIFICATION.  
B. TA-211 CRIMP SPECIFICATION.
  - FOR MANUFACTURING PURPOSES ONLY.
  - PRODUCT MEETS EUROPEAN UNION DIRECTIVES AND OTHER COUNTRY REGULATIONS AS DESCRIBED IN GS-22-008.
  - THIS PRODUCT IS NOT INTENDED TO BE EXPOSED TO MANUFACTURING SOLDERING PROCESSES.
  - PLATING: 50u"/1.27u MIN. Ni UNDERPLATE OVER ENTIRE TERMINAL. OVERPLATE 30u"/0.76 MIN. Au IN CONTACT AREA. 50u"/1.27u MIN. TIN IN CRIMPING AREA.

mat'l code	SEE TABLE	surface	tolerance	projection	product family
lit	ecn no	dr	date	tolerances unless otherwise specified	PV TERMINALS
H				XX-01/XX-3	title
				XXX-005/XXX-B	DUPLEX CTW
				0°±2'	MALE PIN
				M. CLOUSER 1994-08-22	dwg no
				engr T. HANNA 1994-08-22	76808
				chr T. HANNA 1994-08-22	sheet 2 of 3
				appd T. HANNA 1994-08-22	A4
sheet index	revision sheet			scale 10:1	size
				FCI	CUSTOMER Drawing

Copyright FCI

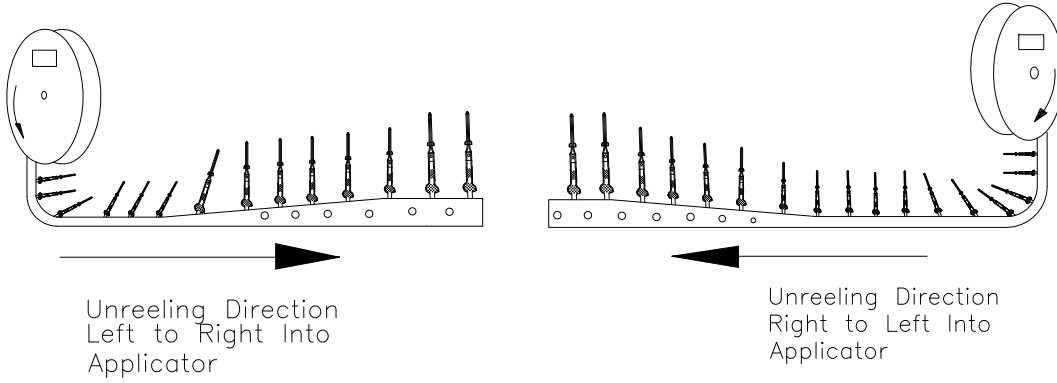


1 | 2

3 |

4

PRODUCT NUMBER  
SEE SHEET 2



mat'l code		SEE TABLE		surface	tolerance	projection	product family
ltr	ecm no	dr	date	tolerances unless otherwise specified		INCH/MM	title
H				angles	XXX+01/XX-3		DUPLEX CTW MALE PIN
				0°±2'	XXXX+0020/XXXX-051	scale 1:1	sheet 3 of 3 size
		dr	M. CLOUSER	1994-08-22		FCI	dwg no
		engr	T. HANNA	1994-08-22			76808
		CTR	T. HANNA	1994-08-22			A4
		appd	T. HANNA	1994-08-22			type
sheet index	revision sheet						CUSTOMER Drawing

form: A4mmX1c

1 |

2 |

3 |

4

PDS: Rev: H

PDM: Rev: H

intd: JST 2015

Released

Printed: Jun 19, 2015