

Excellent Integrated System Limited

Stocking Distributor

Click to view price, real time Inventory, Delivery & Lifecycle Information:

[FCI](#)
[51680-001](#)

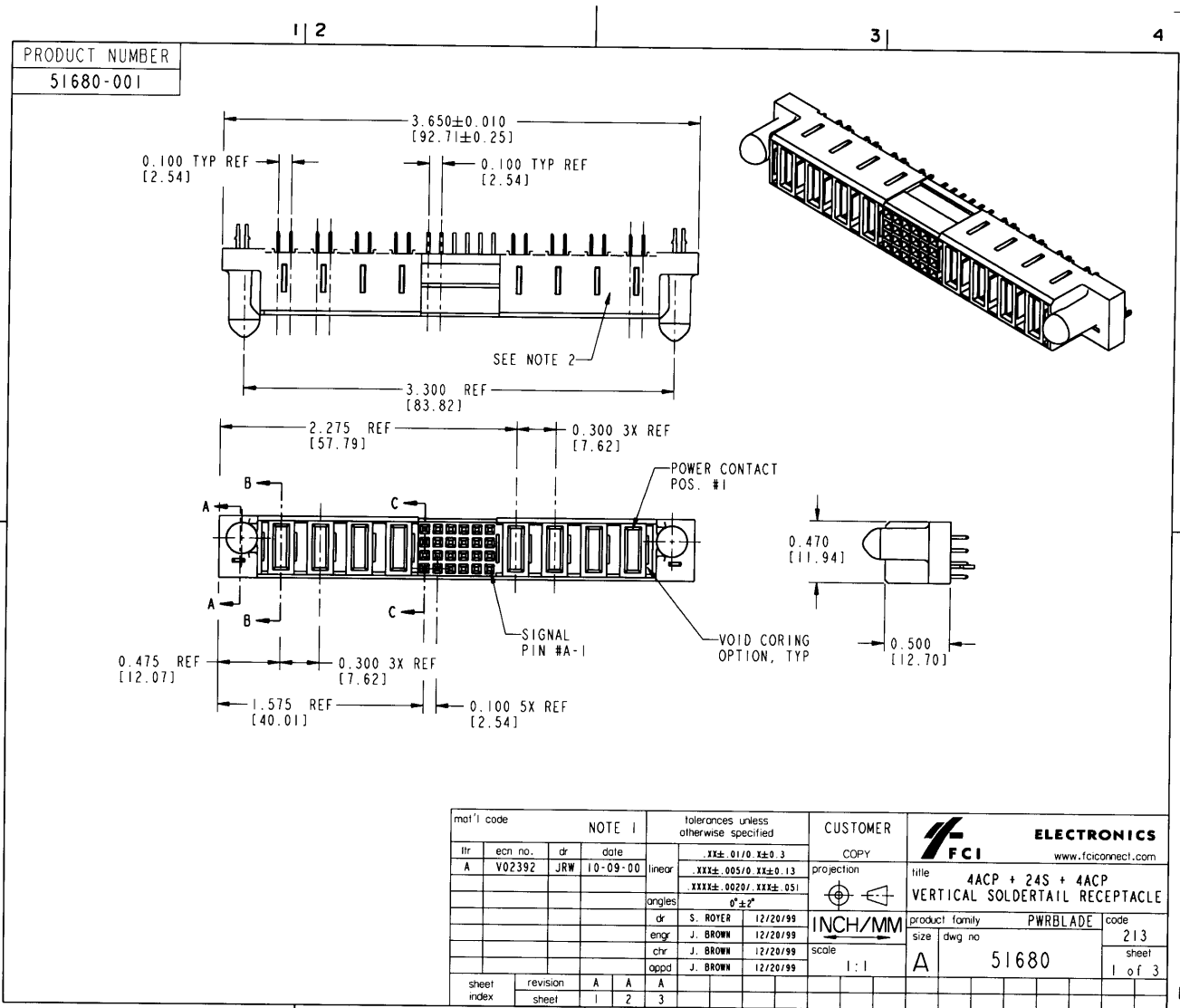
For any questions, you can email us directly:

sales@integrated-circuit.com

Tous droits strictement réservés. Reproduction ou communication, o des tiers interdite
 sans la permission écrite du propriétaire.
 Property of FCI. Droits de reproduction FCI.



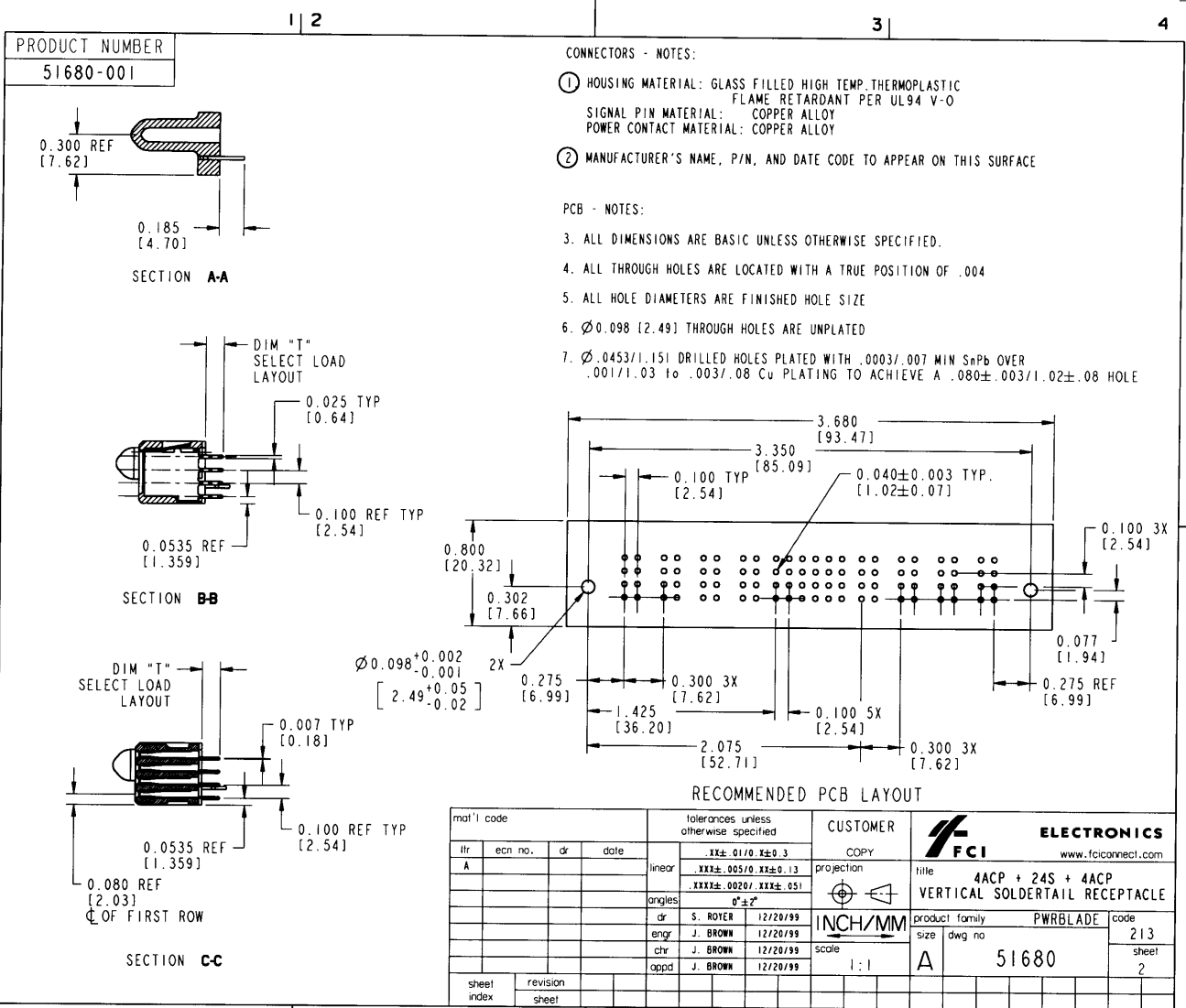
All rights strictly reserved. Reproduction or issue to third parties in any
 form whatsoever is not permitted without written authority from the proprietor.
 Property of FCI. Copyright FCI.



Tous droits strictement réservés. Toute réimpression ou communication à des tiers interdite sans autorisation écrite du propriétaire. Property of FCI. Droits de reproduction FCI.



All rights strictly reserved. Reproduction or issue to third parties in any form whatsoever is not permitted without written authority from the proprietor. Property of FCI. Copyright FCI.



- CONNECTORS - NOTES:
- HOUSING MATERIAL: GLASS FILLED HIGH TEMP. THERMOPLASTIC
 FLAME RETARDANT PER UL94 V-0
 SIGNAL PIN MATERIAL: COPPER ALLOY
 POWER CONTACT MATERIAL: COPPER ALLOY
 - MANUFACTURER'S NAME, P/N, AND DATE CODE TO APPEAR ON THIS SURFACE
- PCB - NOTES:
- ALL DIMENSIONS ARE BASIC UNLESS OTHERWISE SPECIFIED.
 - ALL THROUGH HOLES ARE LOCATED WITH A TRUE POSITION OF .004
 - ALL HOLE DIAMETERS ARE FINISHED HOLE SIZE
 - Ø0.098 [2.49] THROUGH HOLES ARE UNPLATED
 - Ø.0453/1.151 DRILLED HOLES PLATED WITH .0003/.007 MIN SnPb OVER
 .001/1.03 to .003/.08 Cu PLATING TO ACHIEVE A .080±.003/1.02±.08 HOLE

RECOMMENDED PCB LAYOUT

mat'l code		tolerances unless otherwise specified		CUSTOMER		ELECTRONICS www.fciconnect.com	
lfr	ecm no.	dr	date	linear	projection	COPY	
A						title 4ACP + 24S + 4ACP VERTICAL SOLDER TAIL RECEPTACLE	
				angles		product family PWRBLADE code 213	
				dr	S. ROYER	size dwg no	
				engr	J. BROWN	A 51680	
				chr	J. BROWN	sheet 2	
				appd	J. BROWN		
sheet index	revision						
	sheet						



Tous droits strictement réservés. Reproduction ou communication à des tiers interdite sans autorisation écrite du propriétaire. Propriété de c FCI. Droits de reproduction FCI.

All rights strictly reserved. Reproduction or issue to third parties in any form whatever is not permitted without written authority from the proprietor. Property of FCI. Copyright FCI.



PRODUCT NUMBER		1 2		3			4	
ITEM NO.	QTY	DIM "M" MATING LENGTH ±.010 [0.25]		DIM "T" TAIL LENGTH ±.010 [0.25]		CONTACT TYPE	PLATING FOR MATING	PLATING FOR TAIL
51680-001								
PA	8	0.042	[1.07]	0.135	[3.43]	POWER	30 u'' [.76um] Au	SnPb
E	24	N/A	[N/A]	0.135	[3.43]	SIGNAL	30 u'' [.76um] Au	SnPb
HA	2	N/A	[N/A]	N/A	[N/A]	HOLD-DOWN	N/A [N/A]	SnPb

PRODUCT No.	ROWS	POWER				SIGNAL				POWER				E1				
		E2	P8	P7	P6	P5	6	5	4	3	2	1	P4		P3	P2	P1	
51680 - 001	D C B A		PA	PA	PA	PA	E	E	E	E	E	E	E	E	E	E	E	HA

mat'l code				tolerances unless otherwise specified				CUSTOMER		ELECTRONICS www.fciconnect.com	
ltr	ecn no.	dr	date	linear	linear	linear	linear	linear	projection	title	
A					XX±.01/0 XX±0.3	XXX±.005/0 XX±0.13	XXX±.0020/ XXX±.051	0°±2"	INCH/MM	4ACP + 24S + 4ACP VERTICAL SOLDER TAIL RECEPTACLE	
sheet index				revision sheet				scale		product family	
								1:1		PWRBLADE	
								A		code	
										213	
										sheet	
										3	
										cage code	
										22526	