

Excellent Integrated System Limited

Stocking Distributor

Click to view price, real time Inventory, Delivery & Lifecycle Information:

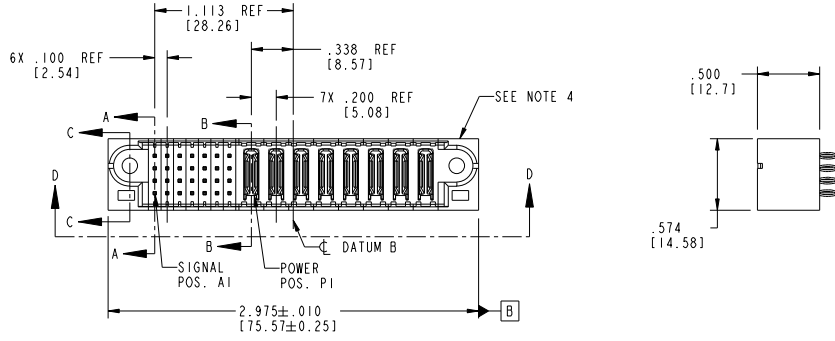
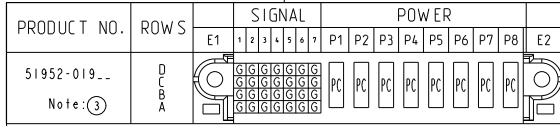
[FCI](#)
[51952-019](#)

For any questions, you can email us directly:
sales@integrated-circuit.com

Tous droits strictement réservés. Reproduction ou communication, en des lieux interdite sans aucune forme que ce soit sans autorisation écrite du propriétaire. Propriété de FCI. Droits de reproduction FCI.



All rights strictly reserved. Reproduction or issue in any form wherever is not permitted without written authority from the proprietor. Property of FCI. Copyright FCI.



CODE	DIM "M" MATING LENGTH		CONTACT TYPE
PC	[N/A]	[N/A]	POWER
G	.270	[6.86]	SIGNAL

mat'l code		SEE NOTE 2	tolerances unless otherwise specified		CUSTOMER	www.fciconnect.com title 28S+8P VERTICAL PRESS FIT HEADER product family PwrBlade code 213 size dwg no 51952-019 sheet 1 of 4
ltr	ecn no.	dr	date	linear	projection	
A	V03-0258	DAI	03/06/03	linear	XX±.01/0.XX+0.3	
B	DG05-0075	JM	04/22/05	linear	XXX±.005/0.XX+0.13	
C	DG05-0450	Ryan	11/12/05	angles	XXXX±.002/0.XX+0.051	
D	DG07-0357	SH	01/05/08	dr	0±°	
				enr	D. INGRAM 03/06/03	
				chr	M. MOSTOLLER 03/06/03	
				oppd	M. MOSTOLLER 03/06/03	
sheet index	revision sheet	D 1	D 2	D 3	D 4	

Pro/E

cage code 22526

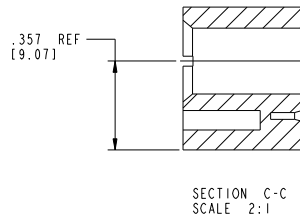
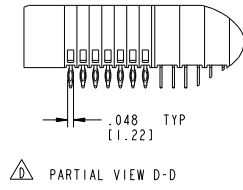
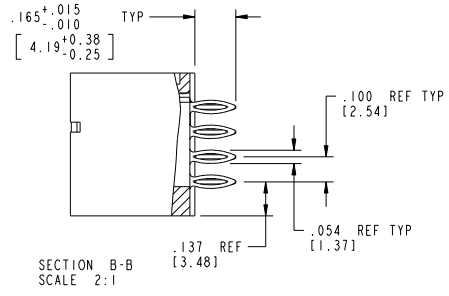
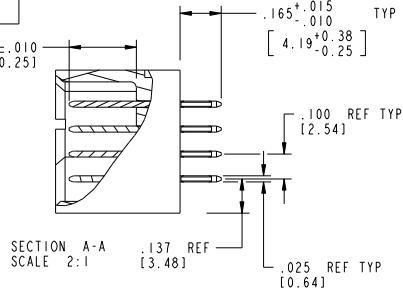
Tous droits strictement réservés. Reproduction ou communication de ces lignes interdit sans aucune forme que ce soit sans autorisation écrite du propriétaire. Propriété de c FCI. Droits de reproduction FCI.



All rights strictly reserved. Reproduction or issue in any form whatever is not permitted without written authority from the proprietor. Property of FCI. Copyright FCI.

PRODUCT NUMBER
51952-019
Note: ③

DIM "M" ± .010
[±0.25]



mat'l code		SEE NOTE 2	tolerances unless otherwise specified		CUSTOMER	FCI www.fciconnect.com	
ltr	ecm no.	dr	date	linear	COPY	projection	title
D				XX+ .01/0 XX+0.3			28S+8P
				XXX+ .005/0 XX+0.13			VERTICAL PRESS FIT HEADER
				angles			product family
				dr	D. INGRAM	03/06/03	PwrBlade
				enrg	M. MOSTOLLER	03/06/03	code
				chr	M. MOSTOLLER	03/06/03	213
				oppd	M. MOSTOLLER	03/06/03	Sheet 2 of 4
sheet index	revision sheet						

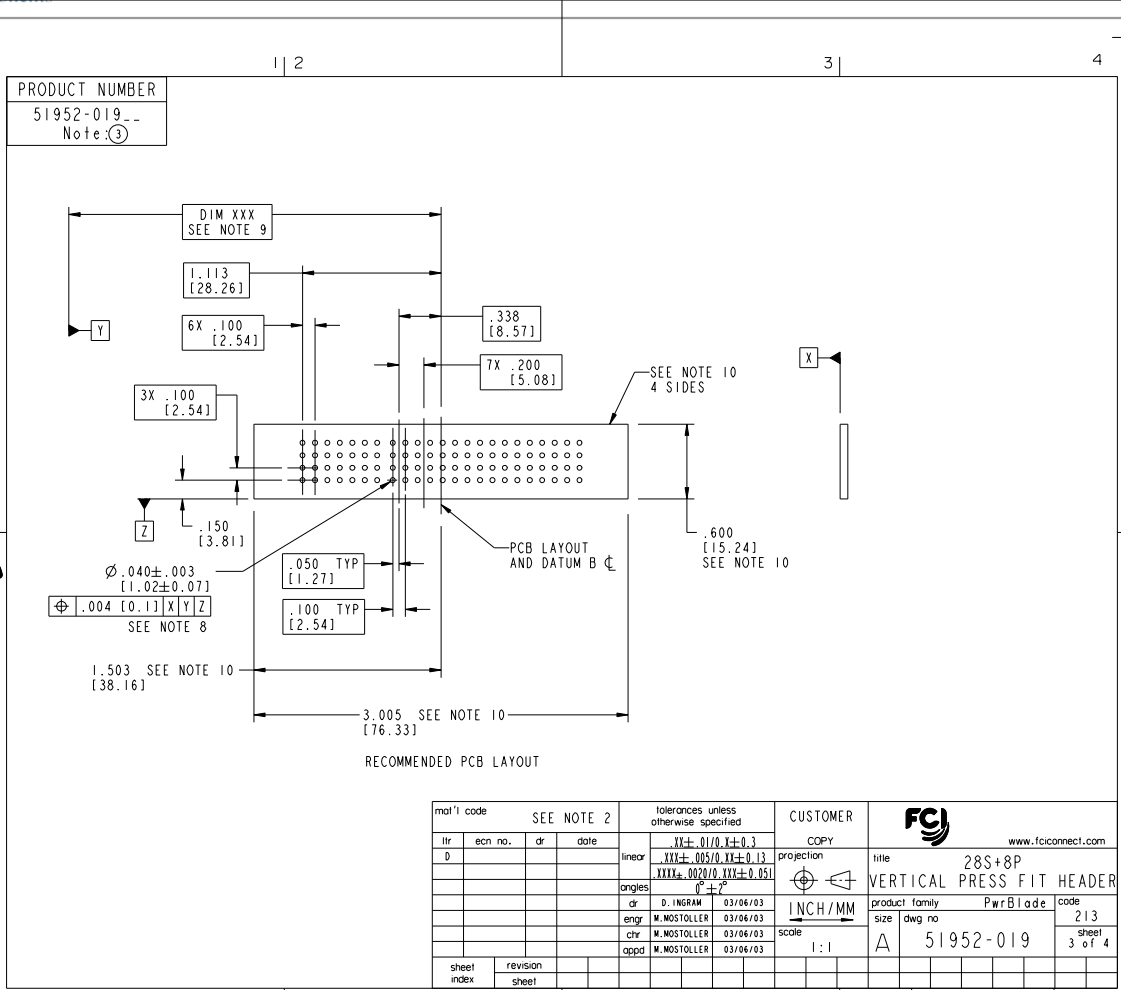
Pro/E

cage code 22526

Tous droits strictement réservés. Reproduction ou communication, en des lieux interdite sans aucune forme que ce soit sans autorisation écrite du propriétaire. Propriété de FCI. Droits de reproduction FCI.



All rights strictly reserved. Reproduction or issue in any form wherever is not permitted without written authority from the proprietor. Property of FCI. Copyright FCI.



Tous droits strictement réservés. Reproduction ou communication, o des liens interdite sans aucune forme que ce soit sans autorisation écrite du propriétaire. Propriété de c FCI. Droits de reproduction FCI.

All rights strictly reserved. Reproduction or issue in any form whatever is not permitted without written authority from the proprietor. Property of FCI. Copyright FCI.

PRODUCT NUMBER
51952-019-001

NOTES:

1. DIMENSIONS AND TOLERANCES ARE IN ACCORDANCE WITH ASME Y14.5M, 1994 UNLESS OTHERWISE SPECIFIED.

CONNECTOR NOTES:

2 HOUSING MATERIAL: UL 94 V-0 GLASS FILLED HIGH-TEMP THERMOPLASTIC

POWER CONTACT MATERIAL: COPPER ALLOY
SIGNAL PIN MATERIAL: COPPER ALLOY

3. PLATING:

51952-019,51952-019LF, PLATING SPEC. SEE PRINT:10064183

4 MANUFACTURER'S NAME, P/N, AND DATE CODE TO APPEAR ON THIS SURFACE.

5. PRODUCT SPECIFICATION GS-12-149.
APPLICATION SPECIFICATION BUS-20-067.

PCB NOTES:

6. ALL HOLE DIAMETERS ARE FINISHED HOLE SIZE.

7. MOUNTING HOLES, WHERE APPLICABLE, ARE UNPLATED.

8 $\varnothing .0453 \pm .0010$ [1.151 \pm 0.025] DRILLED HOLES PLATED WITH
.0003 [0.008] MIN SnPb OVER .001 [0.03]
TO .003 [0.08] Cu PLATING TO ACHIEVE
 $\varnothing .040 \pm .003$ [1.02 \pm .07] HOLE.

9 "DIM XXX" TO BE DETERMINED BY THE CUSTOMER.

10 CONNECTOR KEEP-OUT ZONE.

11. FOR PRESS FIT APPLICATION USE FCI CAM
TOOL 430169-013

12. A Δ SYMBOL WILL BE NEXT TO ANY DIMENSION, VIEW, OR NOTE WHICH HAS BEEN MODIFIED WITH CURRENT DRAWING REVISION.

mat'l code				SEE NOTE 2		tolerances unless otherwise specified		CUSTOMER	
ltr	ecm no.	dr	date	linear	projection	COPY		www.fciconnect.com	
D				$XX \pm .01/0$	$XX \pm 0.3$	title		28S+8P	
				$XXX \pm .005/0$	$XX \pm 0.13$	VERTICAL PRESS FIT HEADER		code 213	
				angles	$XXX \pm .002/0$	product family		PwrBlade	
				dr	D. INGRAM	03/06/03	size	dwg no	51952-019
				engr	M.MOSTOLLER	03/06/03	scale	sheet	4 of 4
				chr	M.MOSTOLLER	03/06/03			
				appd	M.MOSTOLLER	03/06/03			
sheet index	revision sheet								

cage code 22526