

Excellent Integrated System Limited

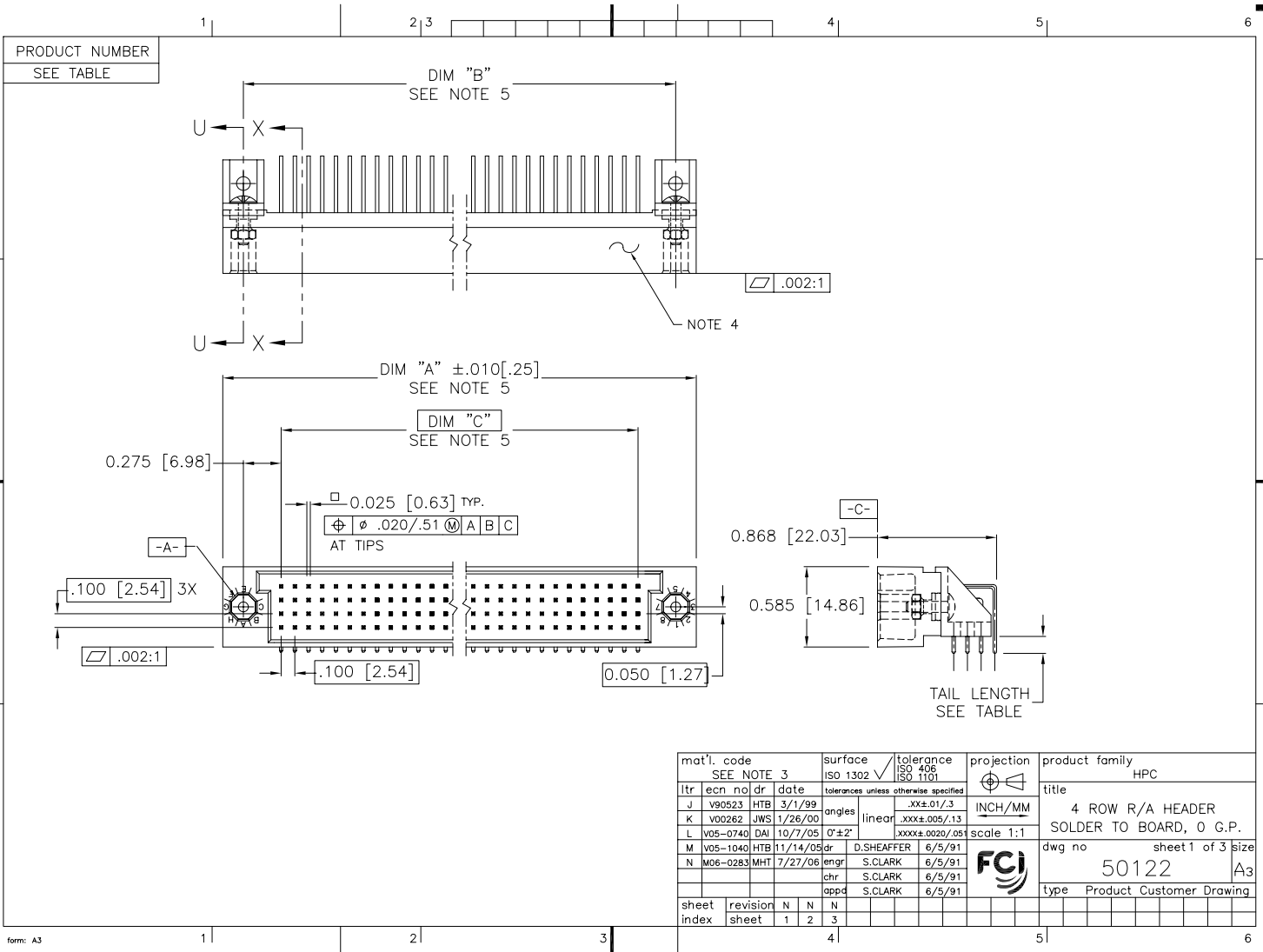
Stocking Distributor

Click to view price, real time Inventory, Delivery & Lifecycle Information:

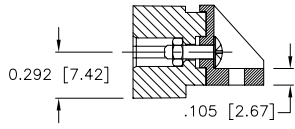
[FCI](#)
[50122-5112J](#)

For any questions, you can email us directly:

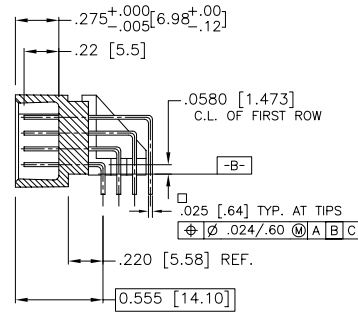
sales@integrated-circuit.com



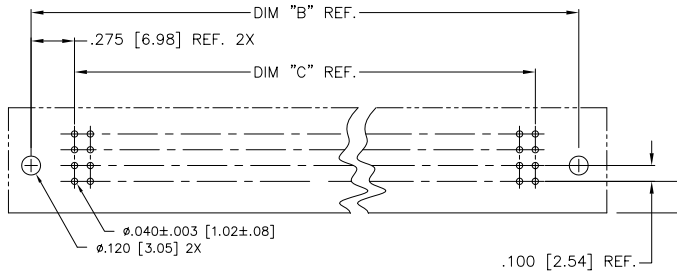
PRODUCT NO.
SEE TABLE



SECTION U-U



SECTION X-X



RECOMMENDED PCB LAYOUT
(ALL HOLES LOCATED ON .100/2.54 GRID
UNLESS OTHERWISE SPECIFIED)

mat'l. code		surface	tolerance	projection	product family
SEE NOTE 3		ISO 1302	ISO 406		HPC
			ISO 1101		INCH/MM
ltr	ecr	no	dr	date	title
N					4 ROW R/A HEADER SOLDER TO BOARD, 0 G.P.
		angles	linear	scale 1:1	dwg no
		0°±2'	.XX±.01/.3		sheet 2 of 3
			.XXX±.005/.13		50122
			.XXXX±.0020/.05		A3
					type Product Customer Drawing
sheet	revision				
index	sheet				

PRODUCT NUMBER	NUMBER OF POSITIONS SEE NOTE 2	TAIL LENGTH REF.	TERMINAL PLATING
50122-1YYYH	YYY	.180/4.57	30μ"/.76μ GOLD
50122-1YYYJ	YYY	.120/3.05	30μ"/.76μ GOLD
50122-3YYYH	YYY	.180/4.57	50μ"/1.27μ GOLD
50122-3YYYJ	YYY	.120/3.05	50μ"/1.27μ GOLD
50122-5YYYH	YYY	.180/4.57	30μ"/.76μ GXT
50122-5YYYHLF	YYY	.180/4.57	30μ"/.76μ GXT
50122-5YYYJ	YYY	.120/3.05	30μ"/.76μ GXT
50122-5YYYJLF	YYY	.120/3.05	30μ"/.76μ GXT

NOTES:

- PRODUCT NUMBERING CODE:
 50122 - X YYY Z LF
 LEAD FREE (OPTIONAL)
 TAIL LENGTH SEE TABLE
 NO. OF POSITIONS SEE NOTE 2
 PLATING SEE TABLE
 BASE NUMBER
- THIS PRODUCT (WITH "LF" SUFFIX) MEETS EUROPEAN UNION DIRECTIVES AND OTHER COUNTRY REGULATIONS AS DESCRIBED IN GS-22-008.
- THIS HOUSING WILL WITHSTAND EXPOSURE TO 260° C PEAK TEMPERATURE FOR 10-30 SECONDS IN A CONVECTION, INFRA-RED OR VAPOR PHASE REFLOW OVEN.

- PRODUCT NUMBERING CODE FOR SELECT LEAD PART NUMBERS:
 50122 - XYYYY LF
 LEAD FREE (OPTIONAL)
 SEQUENCE NUMBER ALWAYS "XX"
 BASE NUMBER

- THIS PRODUCT IS CONFIGURED IN SIZES OF 6 THRU 100 COLUMNS IN INCREMENTS OF ONE. i.e.: 6,7,8,9,.....98,99,100.
- HOUSING MATERIAL: GLASS AND MINERAL FILLED HIGH TEMP. THERMOPLASTIC. FLAME RETARDANT PER UL94V-0. COLOR: BLACK. PIN MATERIAL: PHOS. BRONZE
- MANUFACTURE'S NAME, P/N, AND LOT CODE TO APPEAR ON THIS SURFACE PER BUS-12-108.
- LENGTH FORMULAS:
 DIM "A" = .100/2.54 x NO. OF COLUMNS + .75/19.1
 DIM "B" = .100/2.54 x NO. OF COLUMNS + .450/11.43
 DIM "C" = .100/2.54 x NO. OF COLUMNS - .100/2.54

mat'l. code		surface	tolerance	projection	product family
SEE NOTE 3		ISO 1302	ISO 406 ISO 1101		HPC
ltr	ecn	no	dr	date	title
N					4 ROW R/A HEADER SOLDER TO BOARD, 0 G.P.
			angles	linear	INCH/MM
					scale 1:1
		dr	D.SHEAFFER	6/5/91	FCJ 50122 A3
		enrg	S.CLARK	6/5/91	
		chr	S.CLARK	6/5/91	
		appd	S.CLARK	6/5/91	type Product Customer Drawing
sheet	revision				
index	sheet				