

Excellent Integrated System Limited

Stocking Distributor

Click to view price, real time Inventory, Delivery & Lifecycle Information:

[FCI](#)
[51863-001](#)

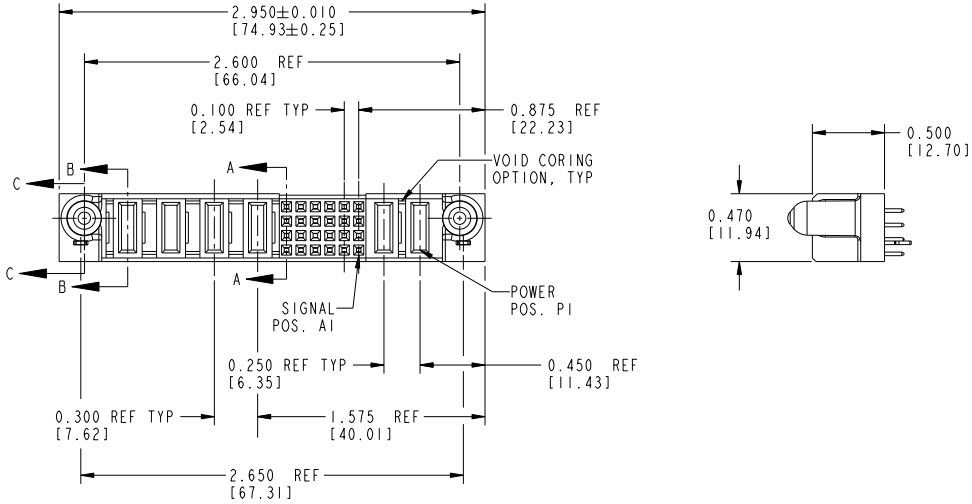
For any questions, you can email us directly:
sales@integrated-circuit.com

Tous droits strictement réservés. Reproduction ou communication à des tiers interdite sous quelque forme que ce soit sans autorisation écrite du propriétaire. Propriété de c FCI. Droits de reproduction FCI.



All rights strictly reserved. Reproduction or issue to third parties in any form whatsoever is not permitted without written authority from the proprietor. Property of FCI. Copyright FCI.

PRODUCT No.	ROWS	POWER					SIGNAL					POWER				
	E2 P6 P5 P4 P3	E1	6	5	4	3	2	1	P2	P1	E1					
51863-001... NOTE: 2	D C B A															



CODE	CONTACT TYPE
E	SIGNAL
PA	POWER
HA	HOLD-DOWN

NOTE 1				tolerances unless otherwise specified		CUSTOMER		CONFIDENTIAL		
ltr	ech no.	dr	date	linear	.XX±.01/0.X±0.3	COPY		www.fciconnect.com		
A	V11143	CGD	12/09/05		.XXX±.005/0.XX±0.13	projection		title 2P + 24S + 4ACP		
B	D605-0530	6voJM	12/09/05	angles	.XXX±.0020/.XXX±.051	INCH/MM		VERTICAL SOLDER TAIL RECEPTACLE		
C	D608-0251	W D	09/16/08		0°±°	scale 1:1		product family PwrBlade code 213		
sheet index			revision sheet	C	C	C	size A		dwg no 51863-001 sheet 1 of 3	
			1	2	3					

Pro/E

PDM: Rev: C

STAT: US: Released

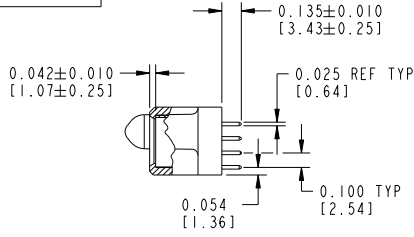
Printed: Dec 20, 2010

Tous droits strictement réservés. Reproduction ou communication à des tiers interdite sans quelque forme que ce soit sans autorisation écrite du propriétaire. Propriété de c FCI. Droits de reproduction FCI.

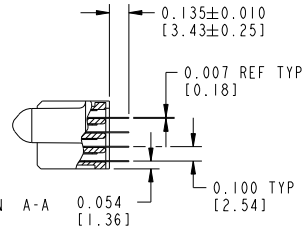


All rights strictly reserved. Reproduction or issue to third parties in any form whatsoever is not permitted without written authority from the proprietor. Property of FCI. Copyright FCI.

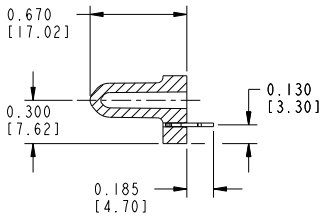
PRODUCT NUMBER
51863-001
NOTE: 2



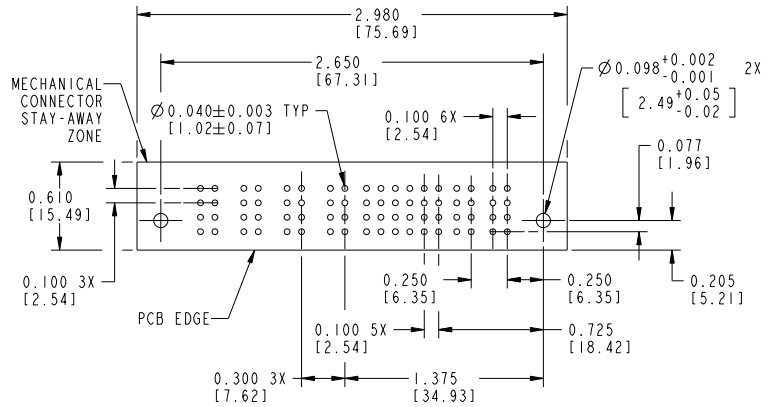
SECTION B-B



SECTION A-A



SECTION C-C



RECOMMENDED PCB LAYOUT

NOTE 1				tolerances unless otherwise specified		CUSTOMER	
mat'l code	itr	ech no.	dr	date	linear	projection	www.fciconnect.com
	C				.XX±.01/0.X±0.3	COPY	
					.XXX±.005/0.XX±0.13	INCH/MM	title 2P + 24S + 4ACP
					.XXX±.0020/.XX±.051	scale 1:1	VERTICAL SOLDER TAIL RECEPTACLE
					angles 0°±2°	product family PwrBlade	code 213
					dr C. DAILY 12/09/05	product family PwrBlade	code 213
					enr J. ALLISON 03/30/01	size 51863-001	sheet 2
					chr J. ALLISON 03/30/01		
					appd J. ALLISON 03/30/01		
sheet index	revision sheet						

1 | 2

Pro/E

PDM: Rev: C

STAT US: Released

Printed: Dec 20, 2010

Tous droits strictement réservés. Reproduction ou communication à des tiers interdite sans queique forme que ce soit sans autorisation écrite du propriétaire. Propriété de c FCI. Droits de reproduction FCI.



All rights strictly reserved. Reproduction or issue to third parties in any form whatsoever is not permitted without written authority from the proprietor. Property of FCI. Copyright FCI.

PRODUCT NUMBER
51863-001__
NOTE: 2

CONNECTOR NOTES:

- HOUSING MATERIAL: UL 94 V-0 GLASS FILLED HIGH-TEMP THERMOPLASTIC
POWER CONTACT MATERIAL: COPPER ALLOY
SIGNAL PIN MATERIAL: COPPER ALLOY

2. SEE ITEM 5 & 6 IN PRINT 10064183 FOR PLATING SPEC OF 51863-001 AND 51863-001LF RESPECTIVELY.

PCB NOTES:

- ALL DIMENSIONS ARE BASIC UNLESS OTHERWISE SPECIFIED.
- ALL THROUGH HOLES ARE LOCATED WITH A TRUE POSITION OF 0.004 [0.10]
- ALL HOLE DIAMETERS ARE FINISHED HOLE SIZE
- $\varnothing 0.098$ [2.49] THROUGH HOLES ARE UNPLATED
- $\varnothing 0.0453 \pm 0.0010$ [1.151 ± 0.025] DRILLED HOLES PLATED WITH 0.0003 [0.008] MIN SnPb OVER 0.001 [0.03] TO 0.003 [0.08] Cu PLATING TO ACHIEVE A $\varnothing 0.040 \pm 0.003$ [1.02 ± 0.07] HOLE.
- A \triangle SYMBOL WILL BE NEXT TO ANY DIMENSION, VIEW, OR NOTE WHICH HAS BEEN MODIFIED WITH THE CURRENT DRAWING REVISION.

CONFIDENTIAL

mat'l code		NOTE 1		tolerances unless otherwise specified		CUSTOMER		FCI	
ltr	ech no.	dr	date	linear	.XX±.01/0.X±0.3	projection	COPY	www.fciconnect.com	
C				angles	.XXX±.005/0.XX±0.13			title	
				dr	.XXX±.0020/.XXX±.051			2P + 24S + 4ACP	
				enr	0°±2°	INCH/MM		VERTICAL SOLDER TAIL RECEPTACLE	
				chr	C. DAILY 12/09/05	scale		product family	code
				appd	J. ALLISON 03/30/01	1:1		PwrBlade	213
					J. ALLISON 03/30/01			size	sheet
					J. ALLISON 03/30/01			51863-001	3
sheet index	revision sheet								

1 | 2

Pro/E

PDM: Rev: C

STAT: US: Released

Printed: Dec 20, 2010

1 | 2

3 |

4

A

A

B

B