

Excellent Integrated System Limited

Stocking Distributor

Click to view price, real time Inventory, Delivery & Lifecycle Information:

[FCI](#)
[51750-011](#)

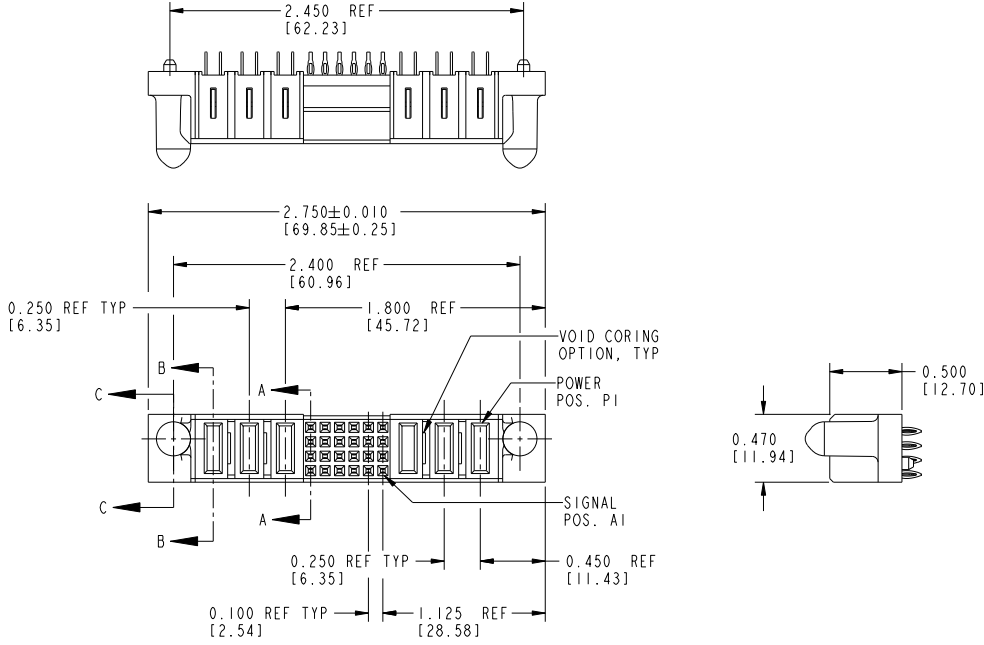
For any questions, you can email us directly:
sales@integrated-circuit.com

Tous droits strictement réservés. Reproduction ou communication à des tiers interdite sans queique forme que ce soit sans autorisation écrite du propriétaire. Propriété de c FCI. Droits de reproduction FCI.



All rights strictly reserved. Reproduction or issue to third parties in any form whatsoever is not permitted without written authority from the proprietor. Property of FCI. Copyright FCI.

PRODUCT No.	ROWS	POWER			SIGNAL						POWER			
		E2	P6	P5	P4	6	5	4	3	2	1	P3	P2	P1
51750-011... NOTE: 3	D C B A													



CODE	DIM "M" ±0.010 [0.25]	CONTACT TYPE
PC	0.042 [1.07]	POWER
PF	0.092 [2.34]	POWER
F	N/A [N/A]	SIGNAL

mat'l code		NOTE 2		tolerances unless otherwise specified		CUSTOMER		FCI	
ltr	ecn no.	dr	date	linear	.XX±.01/0.X±0.3	COPY		www.fciconnect.com	
A	V02930	CGD	12/14/00		.XXX±.005/0.XX±0.13	projection		title 3P + 24S + 3P	
B	DG05-0504	GJM	12/15/05	angles	.XXX±.0020/.XXX±.051	INCH/MM		VERTICAL PRESS-FIT RECEPTACLE	
C	DG08-0251	WD	09/13/08		0°±°	scale 1:1		product family PwrBlade code 213	
				dr	C. DAILY 12/14/00			size dwg no 51750-011 sheet 1 of 3	
				enr	J. DODDS 12/14/00				
				chr	J. DODDS 12/14/00				
				appd	J. DODDS 12/14/00				
sheet index	revision sheet	C	C	C					
		1	2	3					

1 | 2

Pro/E

PDM: Rev: C

STAT: US: Released

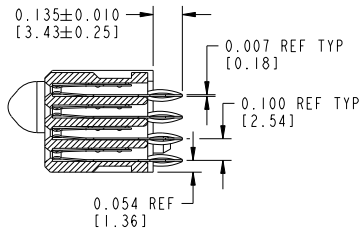
Printed: Dec 20, 2010

Tous droits strictement réservés. Reproduction ou communication à des tiers interdite sous quelque forme que ce soit sans autorisation écrite du propriétaire. Propriété de c FCI. Droits de reproduction FCI.

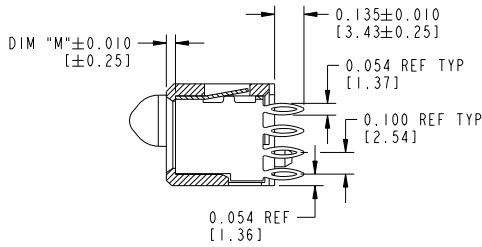


All rights strictly reserved. Reproduction or issue to third parties in any form whatsoever is not permitted without written authority from the proprietor. Property of FCI. Copyright FCI.

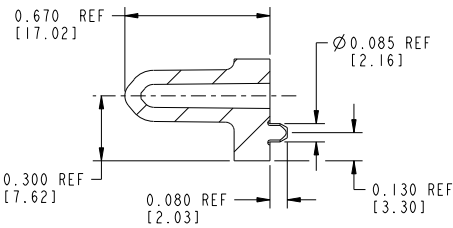
PRODUCT NUMBER
51750-011_



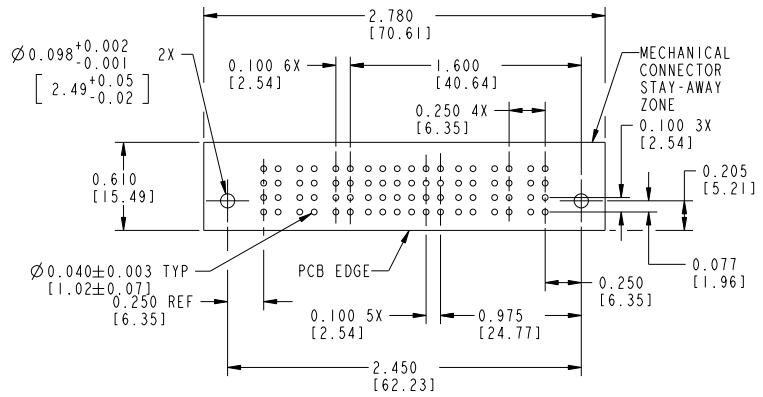
SECTION A-A
SCALE 3:2



SECTION B-B
SCALE 3:2



SECTION C-C
SCALE 3:2



RECOMMENDED PCB LAYOUT

mat'l code		NOTE 2		tolerances unless otherwise specified		CUSTOMER		FCI		www.fciconnect.com	
ltr	ech no.	dr	date	linear	.XX±.01/0.X±0.3	projection	COPY	title			
C				angles	.XXX±.005/0.XX±0.13	INCH/MM		3P + 24S + 3P			
				dr	.XXX±.002/0.XXX±.051	scale		VERTICAL PRESS-FIT RECEPTACLE			
				enr	0°±°	1:1		product family	PwrBlade	code	213
				chr				size		sheet	2
				appd				size	51750-011	sheet	2
sheet index	revision sheet										

Pro/E

PDM: Rev: C

STATUS: Released

Printed: Dec 20, 2010

Tous droits strictement réservés. Reproduction ou communication à des tiers interdite sans quelque forme que ce soit sans autorisation écrite du propriétaire. Propriété de c FCI. Droits de reproduction FCI.



All rights strictly reserved. Reproduction or issue to third parties in any form whatsoever is not permitted without written authority from the proprietor. Property of FCI. Copyright FCI.

PRODUCT NUMBER
51750-011_

NOTES:

1. DIMENSIONS AND TOLERANCES ARE IN ACCORDANCE WITH ASME Y14.5M, 1994 UNLESS OTHERWISE

CONNECTOR NOTES:

- 2. HOUSING MATERIAL: UL 94 V-0 GLASS FILLED HIGH-TEMP THERMOPLASTIC
 POWER CONTACT MATERIAL: COPPER ALLOY
 SIGNAL PIN MATERIAL: COPPER ALLOY
- 3. SEE ITEM 7 & 8 IN PRINT 10064183 FOR PLATING SPEC OF 51750-011 AND 51750-011LF RESPECTIVELY.
- 4. MANUFACTURER'S NAME, P/N, AND DATE CODE TO APPEAR ON THIS SURFACE.
- 5. PRODUCT SPECIFICATION GS-12-149. APPLICATION SPECIFICATION BUS-20-067.

PCB NOTES:

- 6. ALL DIMENSIONS ARE BASIC UNLESS OTHERWISE SPECIFIED.
- 7. ALL THROUGH HOLES ARE LOCATED WITH A TRUE POSITION OF .004 [0.10]
- 8. ALL HOLE DIAMETERS ARE FINISHED HOLE SIZE
- 9. Ø0.098 [2.49] THROUGH HOLES ARE UNPLATED
- 10. Ø0.0453±0.0010 [1.151±0.025] DRILLED HOLES PLATED WITH 0.0003 [0.008] MIN SnPb OVER 0.001 [0.03] TO 0.003 [0.08] Cu PLATING TO ACHIEVE A Ø0.040±0.003 [1.02±0.07] HOLE.
- 11. A SYMBOL WILL BE NEXT TO ANY DIMENSION, VIEW, OR NOTE WHICH HAS BEEN MODIFIED WITH THE CURRENT DRAWING REVISION.

mat'l code		NOTE 2		tolerances unless otherwise specified		CUSTOMER		FCI		www.fciconnect.com	
ltr	ecn no.	dr	date	linear	.XX±.01/0.X±0.3	projection	COPY	title	3P + 24S + 3P		
C					.XXX±.005/0.XX±0.13			VERTICAL PRESS-FIT RECEPTACLE			
				angles	.XXX±.002/.XXX±.051			product family	PwrBlade	code	213
				dr	C, DAILY 12/14/00	scale	A	size	51750-011	sheet	3
				enr	J. DODDS 12/14/00			dwg no			
				chr	J. DODDS 12/14/00						
				appd	J. DODDS 12/14/00						
sheet index	revision sheet										

1 | 2

Pro/E

PDM: Rev: C

STATUS: Released

Printed: Dec 20, 2010

1 | 2

3 |

4

A

A

B

B