

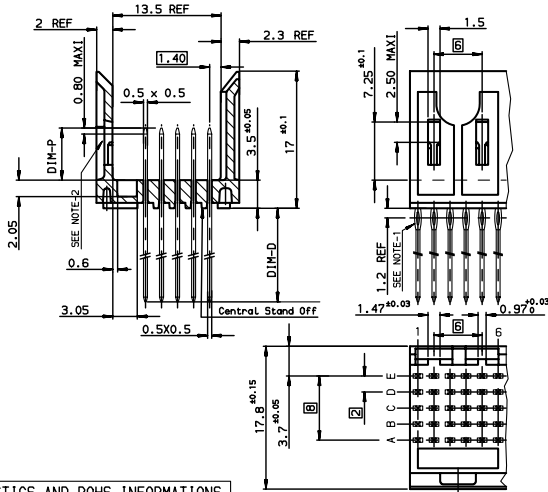
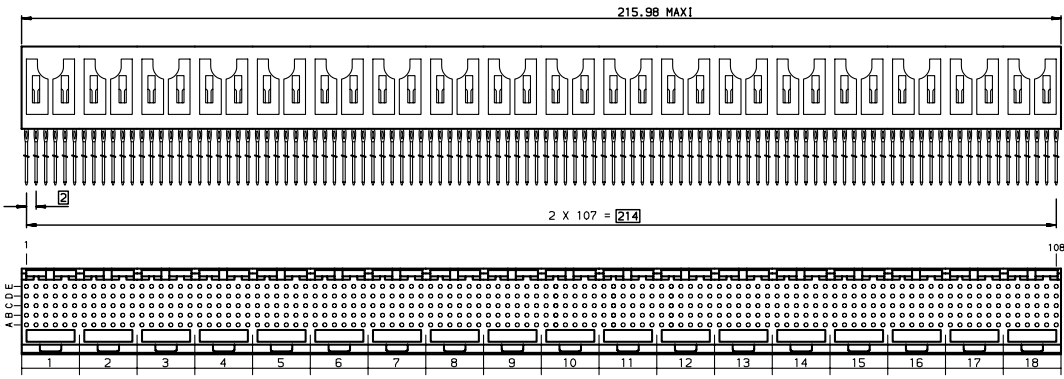
Excellent Integrated System Limited

Stocking Distributor

Click to view price, real time Inventory, Delivery & Lifecycle Information:

[FCI](#)
[HM1W59LVR144H6P](#)

For any questions, you can email us directly:
sales@integrated-circuit.com



TIN LEAD PART NUMBER

Part Number: HM1W59xyR144H6	
dim-P	P=5.00±0.10 REPLACE x BY A P=7.25±0.10 REPLACE x BY M
ALL CONTACTS	P=5.75±0.10 REPLACE x BY L P=8.00±0.10 REPLACE x BY N
	P=6.50±0.10 REPLACE x BY D
dim-D	D=4.25±0.25 REPLACE y BY P D=15.6±0.25 REPLACE y BY L
ALL CONTACTS	D=11.8±0.25 REPLACE y BY K D=17.0±0.25 REPLACE y BY N
	D=13.6±0.25 REPLACE y BY V

LEAD-FREE PART NUMBER

Part Number: HM1W59xyR144H6LF	
dim-P	P=5.00±0.10 REPLACE x BY A P=7.25±0.10 REPLACE x BY M
ALL CONTACTS	P=5.75±0.10 REPLACE x BY L P=8.00±0.10 REPLACE x BY N
	P=6.50±0.10 REPLACE x BY D
dim-D	D=4.25±0.25 REPLACE y BY P D=15.6±0.25 REPLACE y BY L
ALL CONTACTS	D=11.8±0.25 REPLACE y BY K D=17.0±0.25 REPLACE y BY N
	D=13.6±0.25 REPLACE y BY V

GENERAL CHARACTERISTICS AND ROHS INFORMATIONS:
 SEE PRODUCT SPECIFICATION GS-12-445

- NOTE-1: "EYE OF THE NEEDLE" PRESS-FIT PIN TYPE
 NOTE-2: CAVITY FOR CODING KEY MOUNTING AND CABLE CONNECTOR LATCH.
 NOTE-3: INSERTION TOOLING ON PCB, SEE DRAWING REF C-8626-1002
 NOTE-4: IF SUFFIX "P" IS ADDED IN P/N, PACKAGING IS IN TRAYS BUT CONNECTOR MARKING IS WITHOUT "P"
 EXAMPLE: HM1W59xyR144H6P, MARKED HM1W59xyR144H6

www.fciconnect.com		Surface	ISO 1302	Tolerance std	ISO 406 ISO 1101	projection	mm
		TOLERANCES UNLESS OTHERWISE SPECIFIED					
Dr	CHAMPION	1995/11/24	ANGULAR	0.X	±0.1	size	A2
Eng	LENDIR	1995/11/24	LINEAR	0.XX	±0.1	Scale	3
Ch	LEGARE	1995/11/24	ARC ±2	0.XXX	±0.1	ECN	LS07-0012
E	LS2-004	2005/02/18					
F	LS6-005	2006/07/12					
G	LS7-012	2007/03/28					
FCI METRAL MALE 5 ROWS 540 WAYS		STANDARD STRAIGHT PRESS-FIT		C-8626-0814		Rev.	6
catalog no				CUSTOMER		sheet 1 of 1	