

Excellent Integrated System Limited

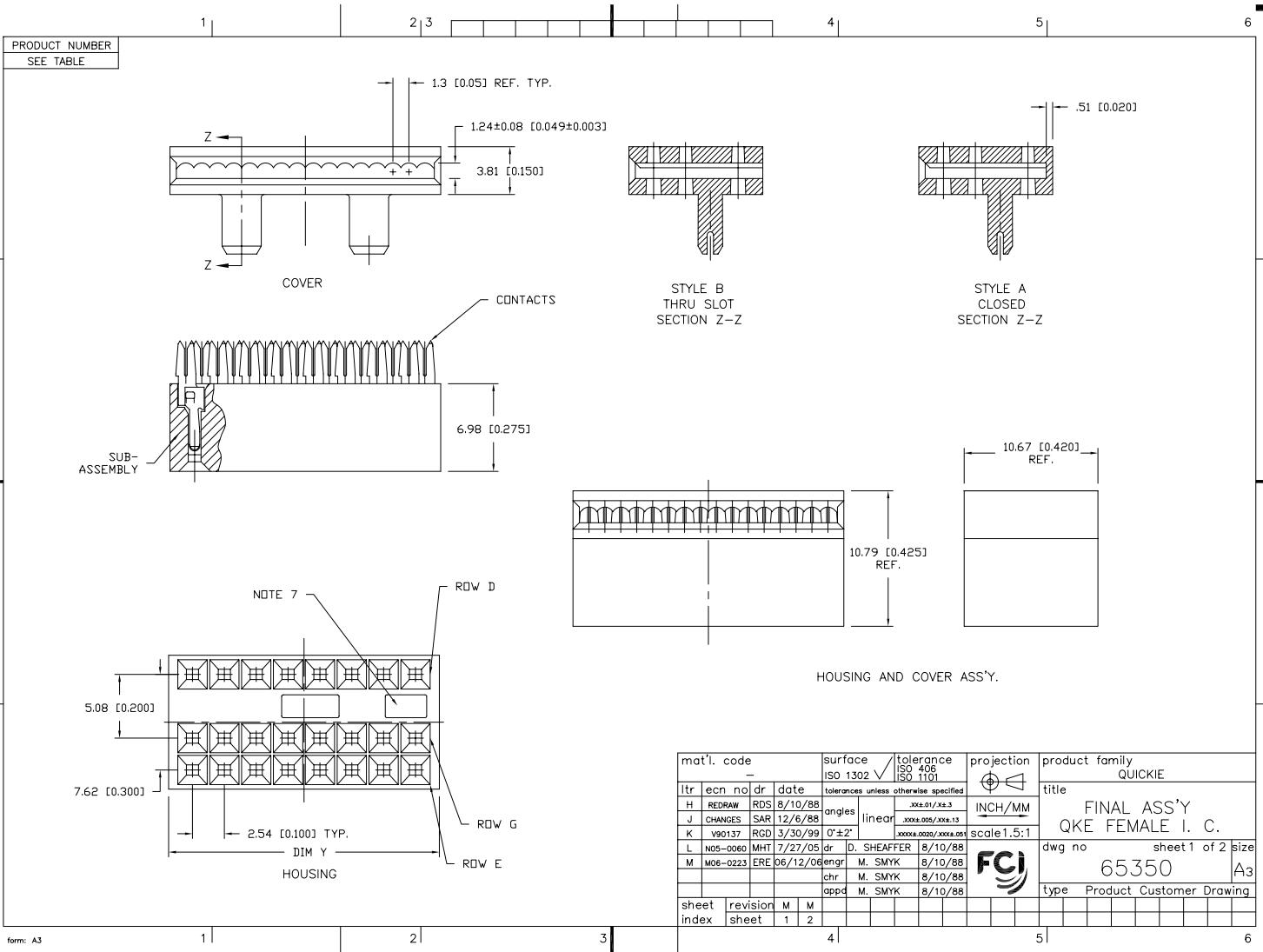
Stocking Distributor

Click to view price, real time Inventory, Delivery & Lifecycle Information:

[FCI](#)
[65350-007](#)

For any questions, you can email us directly:

sales@integrated-circuit.com



mat'l. code		surface		tolerance		projection		product family	
-		ISO 1302		ISO 406		ISO 1101		QUICKIE	
tr		ecr		nldr		date		title	
H		REDRAW		RDS		8/10/88		FINAL ASS'Y	
J		CHANGES		SAR		12/6/88		QKE FEMALE I. C.	
K		V90137		RGD		3/30/99		65350	
L		N05-0060		MHT		7/27/05		sheet 1 of 2 size	
M		M06-0223		ERE		06/12/06		A3	
sheet		revision		M		M		type	
index		sheet		1		2		Product Customer Drawing	

PRODUCT NUMBER NOTE 8	SIZE	LOADED ROWS	COVER STYLES	DIMENSION Y	SEE NOTE
65350-001	2 x 7	D AND E	A	19.05 [0.750]	2
-002	2 x 8	D AND E	A	21.59 [0.850]	2
-003	2 x 7	D AND G	A	19.05 [0.750]	2
-004	2 x 8	D AND G	A	21.59 [0.850]	2
-005	2 x 7	D AND E	B	19.05 [0.750]	2
-006	2 x 8	D AND E	B	21.59 [0.850]	2
-007	2 x 7	D AND G	B	19.05 [0.750]	2
-008	2 x 8	D AND G	B	21.59 [0.850]	2
-011	2 x 7	D AND G	A	19.05 [0.750]	6
-012	2 x 8	D AND G	A	21.59 [0.850]	6
-013	2 x 7	D AND E	B	19.05 [0.750]	6
-014	2 x 8	D AND E	B	21.59 [0.850]	6
-015	2 x 7	D AND G	B	19.05 [0.750]	6
-016	2 x 8	D AND G	B	21.59 [0.850]	6
-017	2 x 7	D AND E	A	19.05 [0.750]	6
65350-018	2 x 8	D AND E	A	21.59 [0.850]	6

NOTES:

- CONTACT MAT'L: FULL HARD PHOSPHOR BRONZE.
- TERMINAL PLATING: 1.27u/50u" MIN. Ni UNDERPLATE OVER ENTIRE TERMINAL AND .76u/30u" MIN. Au IN DISCONNECT AREA ONLY.
- COVER MAT'L: 30% GLASS FILLED POLYESTER. FLAME RETARDANT PER UL 94V-O. COLOR: BLUE
- SUB-ASS'Y HOUSING MAT'L: 30% GLASS FILLED POLYESTER. FLAME RETARDANT PER UL 94V-O. COLOR: BLUE.
- APPLICATION DWG. TA-172 ILLUSTRATES ASSEMBLY DETAILS.
- TERMINAL PLATING: 1.27u/ 50u" MIN. Ni UNDERPLATE OVER ENTIRE TERMINAL AND 1.27u/50u" MIN. Au IN DISCONNECT AREA ONLY. COLOR BLUE P/N 16-508-002
- THIS FEATURE ON 2 x 8 SIZE ONLY.
- ADD "LF" SUFFIX AT THE END OF PART NUMBER FOR LEAD FREE OPTION.
- THIS PRODUCT MEETS EUROPEAN UNION DIRECTIVES AND OTHER COUNTRY REGULATION AS DESCRIBED IN GS-22-008.
- THE PRODUCT IS NOT INTENDED TO BE EXPOSED TO A MANUFACTURING SOLDER PROCESS.

mat'l. code		surface		tolerance		projection		product family	
-		ISO 1302		ISO 406				QUICKIE	
ltr		ecn		no		date		title	
M								FINAL ASS'Y	
				angles		linear		INCH/MM	
				0'±2"				scale 1.5:1	
				dr		D. SHEAFFER		8/10/88	
				enrg		M. SMYK		8/10/88	
				chr		M. SMYK		8/10/88	
				appd		M. SMYK		8/10/88	
sheet		revision						type	
index		sheet						Product Customer Drawing	