

## Excellent Integrated System Limited

Stocking Distributor

Click to view price, real time Inventory, Delivery & Lifecycle Information:

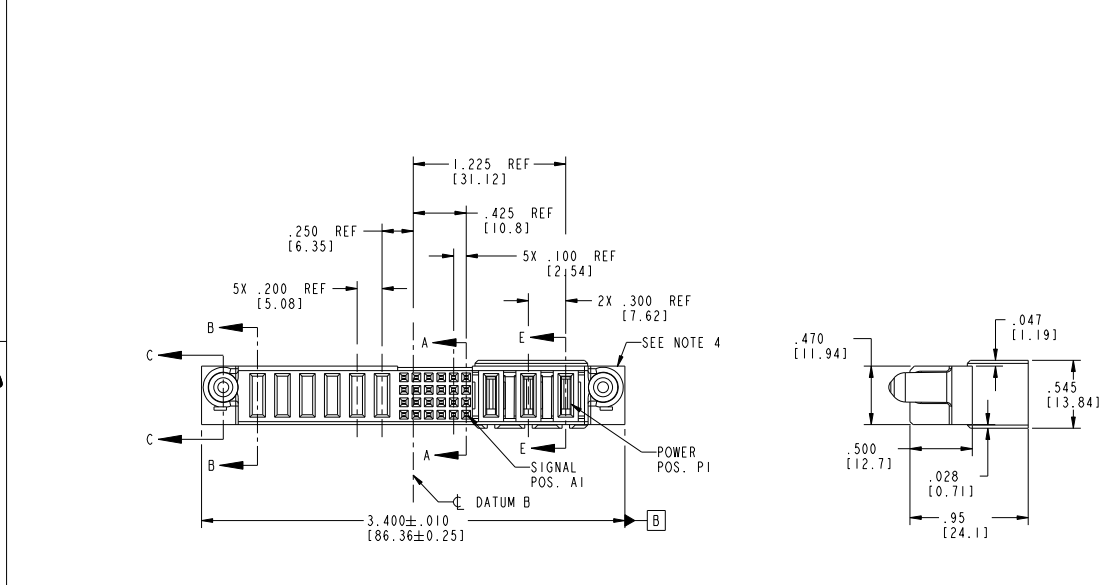
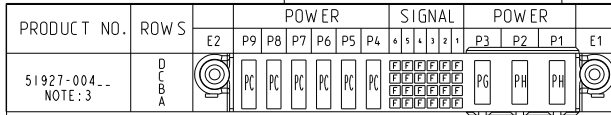
[FCI](#)  
[51927-004](#)

For any questions, you can email us directly:  
[sales@integrated-circuit.com](mailto:sales@integrated-circuit.com)

Tous droits strictement réservés. Reproduction ou communication, en des lieux interdite sans aucune forme que ce soit sans autorisation écrite du propriétaire. Propriété de c FCI. Droits de reproduction FCI.



All rights strictly reserved. Reproduction or issue in third parties in any form whatever is not permitted without written authority from the proprietor. Property of FCI. Copyright FCI.



CODE	DIM "M"	MATING LENGTH	CONTACT TYPE
F	N/A	[N/A]	SIGNAL
PC	.042	[1.07]	POWER
PG	.042	[1.07]	POWER
PH	.092	[2.34]	POWER

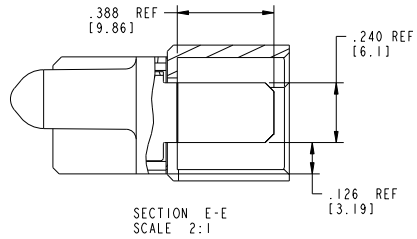
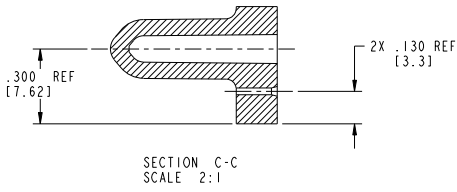
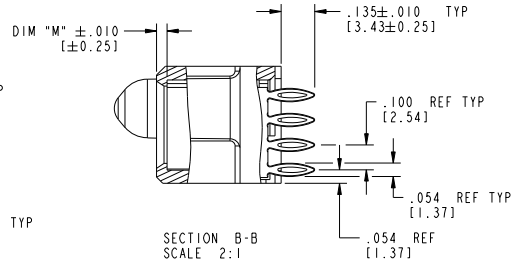
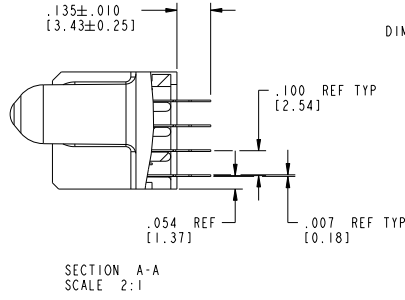
mat'l code				SEE NOTE 2		tolerances unless otherwise specified		CUSTOMER	
ltr	ecm no.	dr	date	linear	XX±.01/0.XX±0.3	projection	www.fciconnect.com		
A	V03-1149	TAB	10/24/03		XXX±.005/0.XX±0.13		COPY		
B	V03-1215	TAB	11/11/03		XXX±.0020/0.XX±0.051		title 3ACP + 24S + 6P		
C	V03-1223	TAB	11/14/03	angles	0° ± .2°		VERTICAL PF RECEPT CABLE PORT		
D	D608-0273	WD	12/12/08	dr	I. BRUNGARD	10/24/03	product family PwrBlade		
				enr	M. GRAY	10/24/03	size dwg no 51927-004		
				chr	M. GRAY	10/24/03	code 213		
				oppd	M. GRAY	10/24/03	sheet 1 of 4		
sheet index	revision sheet	D	D	D	D	D	scale 1:1		
1	2	3	4				cage code 22526		

Tous droits strictement réservés. Reproduction ou communication, en des lieux interdite sans aucune forme que ce soit sans autorisation écrite du propriétaire. Propriété de c FCI. Droits de reproduction FCI.



All rights strictly reserved. Reproduction or issue in any form wherever is not permitted without written authority from the proprietor. Property of FCI. Copyright FCI.

PRODUCT NUMBER  
51927-004  
NOTE: 3



mat'l code		SEE NOTE 2	tolerances unless otherwise specified		CUSTOMER	www.fciconnect.com	
ltr	ecm no.	dr	date	linear	COPY		title
D				linear	projection	3ACP + 24S + 6P	
				angles		VERTICAL PF RECEPT CABLE PORT	
				dr		product family	PwrBlade
				enr	INCH/MM scale 1:1	size	
				chr		dwg no	213
				oppd		51927-004	sheet 2 of 4
sheet index	revision sheet						

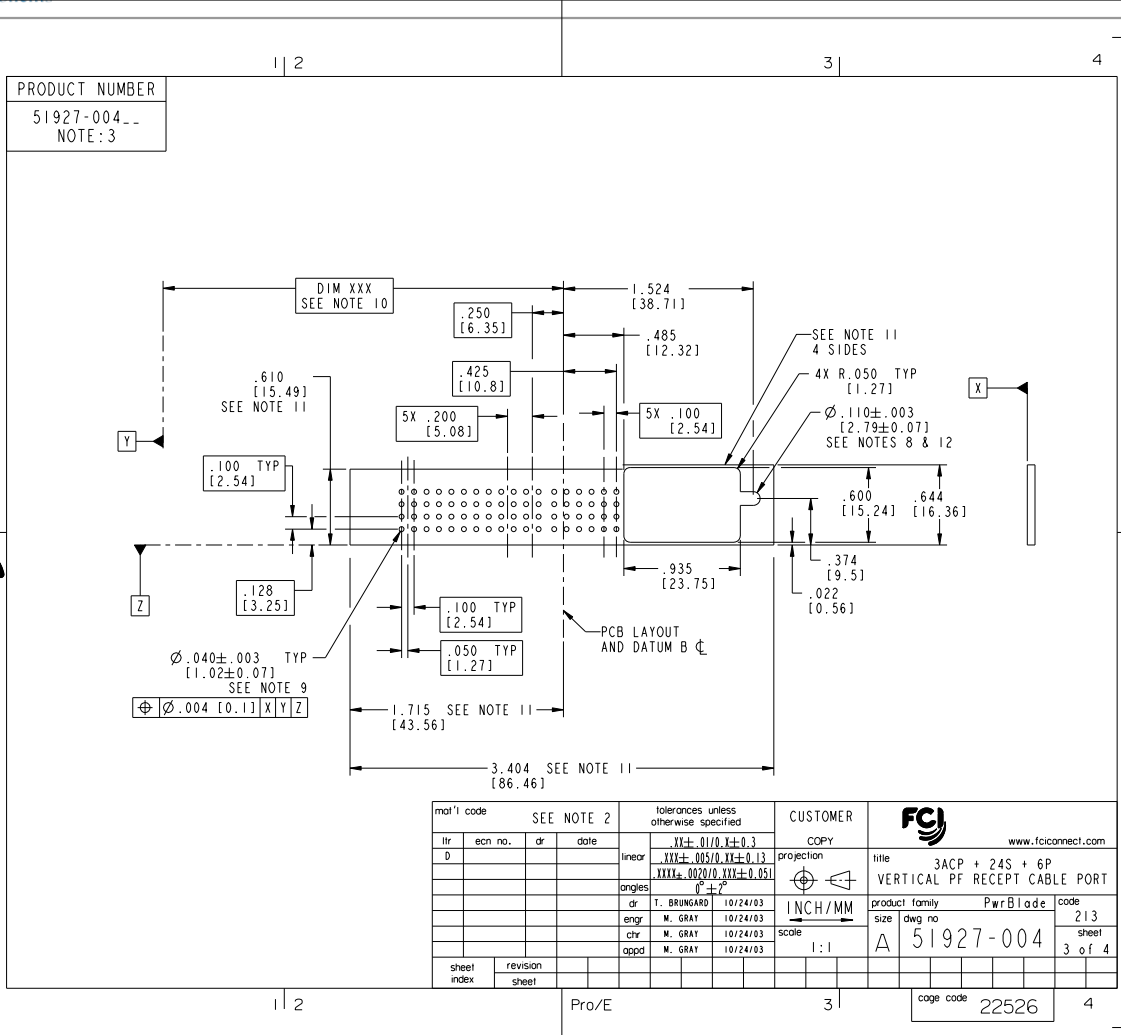
Pro/E

cage code 22526

Tous droits strictement réservés. Reproduction ou communication, en des lieux interdite sans aucune forme que ce soit sans autorisation écrite du propriétaire. Propriété de c FCI. Droits de reproduction FCI.



All rights strictly reserved. Reproduction or issue in third parties in any form whatever is not permitted without written authority from the proprietor. Property of FCI. Copyright FCI.



mat'l code		SEE NOTE 2		tolerances unless otherwise specified		CUSTOMER	
ltr	ecm no.	dr	date	linear	angular	COPY	www.fciconnect.com
D				$XX \pm .01/0$	$XY \pm 0.13$	projection	title
				$XXX \pm .005/0$	$YY \pm 0.051$		3ACP + 24S + 6P
				angles	$0 \pm 2^\circ$	INCH/MM	VERTICAL PF RECEPT CABLE PORT
				dr	T. BRUNGARD 10/24/03	scale	product family PwrBlade code
				enrg	M. GRAY 10/24/03	1:1	size
				chr	M. GRAY 10/24/03		dwg no
				oppd	M. GRAY 10/24/03		51927-004
sheet index	revision sheet						213
							3 of 4
							cage code 22526

Tous droits strictement réservés. Reproduction ou communication, en des lieux interdite sans aucune forme, ou en son sans autorisation écrite du propriétaire. Propriété de FCI. Droits de reproduction FCI.



All rights strictly reserved. Reproduction or issue in third parties in any form whatever is not permitted without written authority from the proprietor. Property of FCI. Copyright FCI.

PRODUCT NUMBER  
51927-004  
NOTE: 3

NOTES:

1. DIMENSIONS AND TOLERANCES ARE IN ACCORDANCE WITH ASME Y14.5M, 1994 UNLESS OTHERWISE SPECIFIED.

CONNECTOR NOTES:

- 2 HOUSING MATERIAL: UL 94 V-0 GLASS FILLED HIGH-TEMP THERMOPLASTIC  
POWER CONTACT MATERIAL: COPPER ALLOY  
SIGNAL PIN MATERIAL: COPPER ALLOY
- 3. SEE ITEM 5 & 6 IN PRINT 10064183 FOR PLATING SPEC OF 51927-004 AND 51927-004LF RESPECTIVELY.

4 MANUFACTURER'S NAME, P/N, AND DATE CODE TO APPEAR ON THIS SURFACE.

5. PRODUCT SPECIFICATION GS-12-149.  
APPLICATION SPECIFICATION BUS-20-067.

6. PACKAGED IN TRAYS.

PCB NOTES:

7. ALL HOLE DIAMETERS ARE FINISHED HOLE SIZE.

8 MOUNTING HOLES, WHERE APPLICABLE, ARE UNPLATED.

9  $\varnothing .0453 \pm .0010$  [1.151 ± 0.025] DRILLED HOLES PLATED WITH  
.0003 [0.008] MIN SnPb OVER .001 [0.03]  
TO .003 [0.08] Cu PLATING TO ACHIEVE  
 $\varnothing .040 \pm .003$  [1.02 ± .07] HOLE.

10 "DIM XXX" TO BE DETERMINED BY THE CUSTOMER.

11 CONNECTOR KEEP-OUT ZONE.

12 RECOMMENDED RETENTION TO PCB

$\varnothing .110$  [2.79] THRU HOLE FOR M2.5 SOCKET HEAD CAP SCREW, MAX HEAD  $\varnothing .177$  [4.50]  
RECOMMENDED SCREW LENGTH: .472 [12.00] + PCB THICKNESS  
RECOMMENDED SCREW SEATING TO PCB TORQUE: 2-5 lbf-in (2300-5760 gf-cm).

13. A/D SYMBOL WILL BE NEXT TO ANY DIMENSION, VIEW, OR NOTE WHICH HAS BEEN MODIFIED WITH THE CURRENT DRAWING REVISION.

mat'l code		SEE NOTE 2	tolerances unless otherwise specified	CUSTOMER	www.fciconnect.com projection title 3ACP + 24S + 6P VERTICAL PF RECEPT CABLE PORT product family PwrBlade code 213 size dwg no 51927-004 sheet 4 of 4 scale 1:1
ltr	ecm no.	dr	date	linear	
D				linear	$XX \pm .01/0.X \pm 0.3$ $XXX \pm .005/0.XX \pm 0.13$ $XXXX \pm .0020/0.XXX \pm 0.051$ $0 \pm .0$
				angles	
				dr	
				enrg	
				chr	
				oppd	
sheet index	revision sheet				

1 | 2

Pro/E

3 |

cage code 22526

4