

## Excellent Integrated System Limited

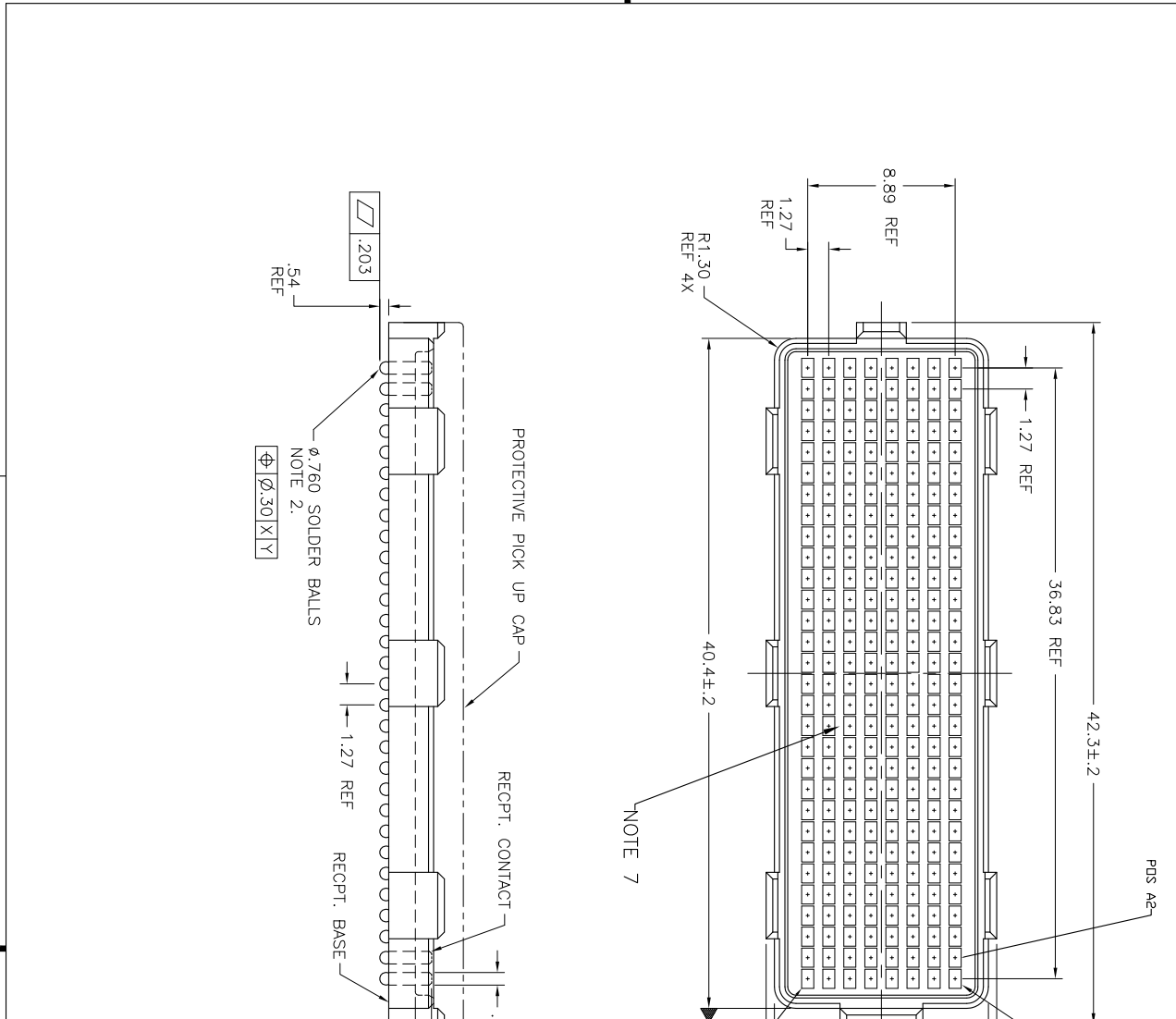
Stocking Distributor

Click to view price, real time Inventory, Delivery & Lifecycle Information:

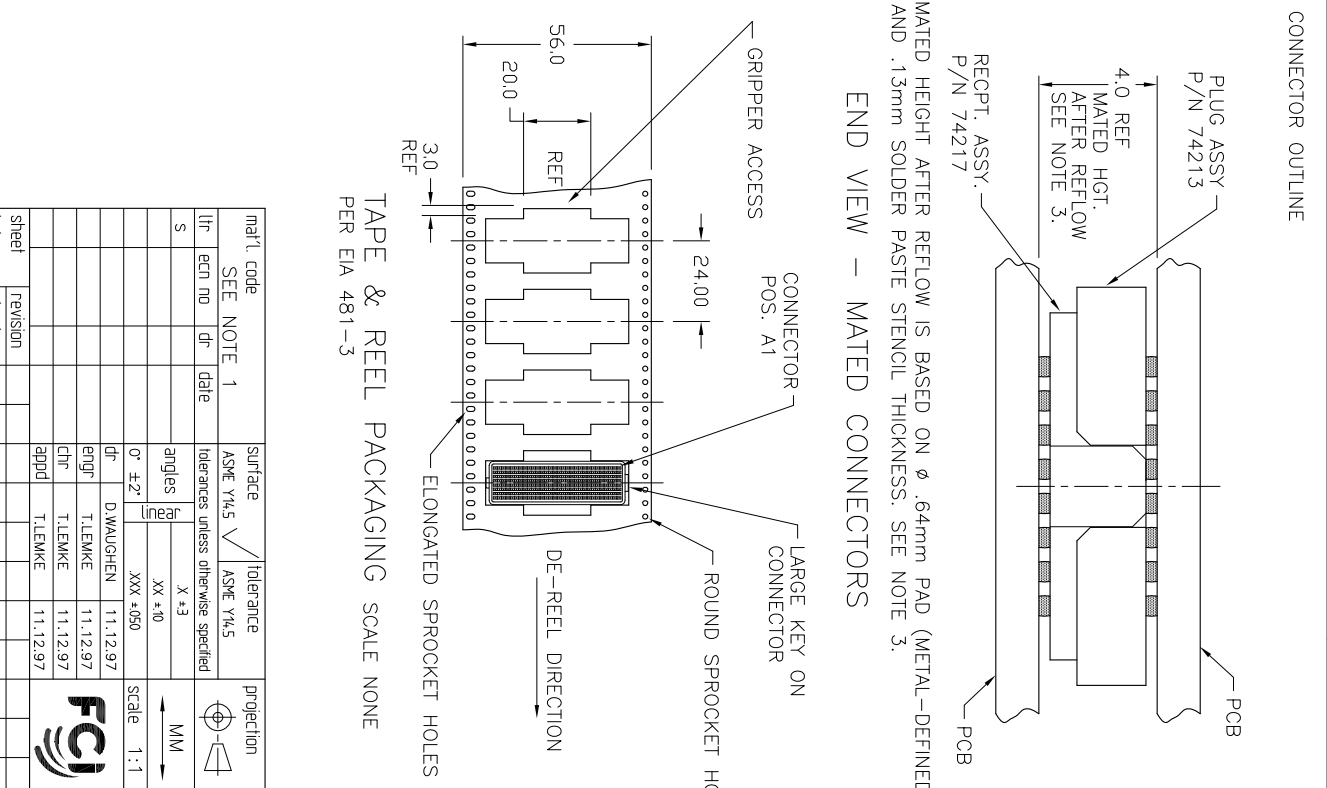
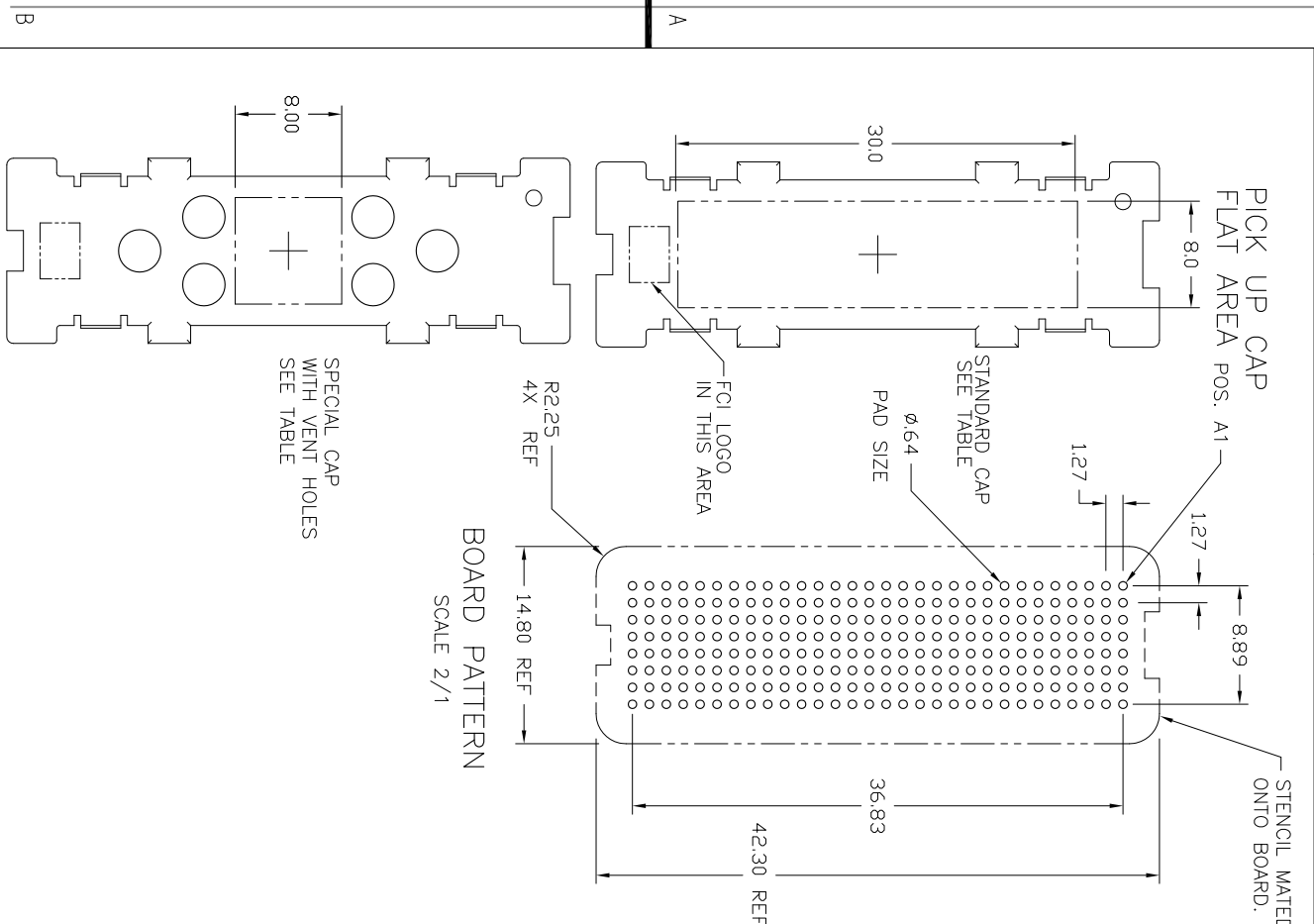
[FCI](#)  
[74217-001](#)

For any questions, you can email us directly:  
[sales@integrated-circuit.com](mailto:sales@integrated-circuit.com)

PRODUCT NUMBER  
SEE SHEET 3

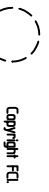


mat'l code	SEE NOTE 1	date	surface	tolerance	projection	product family
Ln	ecm no.	dr	ASME Y14.5	ASME Y14.5	MM	MEG-Array
M	V06-0560	LP 2006/06/22	tolerances unless otherwise specified	X +3		
N	V-13467	DCH012-11-15		XX +10		
P	V-16678	DCH 2014-1-7 0' ±2'		XXX +050	Scale 1:1	
R	V-17551	DCH014-04-2df				
S	V-17551	DCH 2015-1-28 engr	DWAUGHEN	11.12.97		dwg no
			TELMKE	11.12.97		sheet 1 of 3
			TELMKE	11.12.97		size
L	V04-0940	VS 10/18/04 appd	TELMKE	11.12.97		74217
index	Sheet	Sheet	Sheet	Sheet	Sheet	CUSTOMER Drawing



**TAPE & REEL PACKAGING SCALE NONE**  
 PER EIA 481-3

mat'l. code	surface	tolerance	projection	product family
SEE NOTE 1	ASME Y14.5	ASME Y14.5	MM	MEG-Array
lin	ecm no	dr	date	title
S				4mm RECPT. ASSY 8 X 30 = 240POS.
tolerances unless otherwise specified		angles	scale	
		0° ±2'	1:1	
DWAUGHEN 11.12.97		engr	scale	
TLEMKE 11.12.97		chn	1:1	
TLEMKE 11.12.97		appd		
TLEMKE 11.12.97				
sheet	revision			
index	sheet			



FCIconnect.com

PRODUCT NUMBER	NOTES	CONTACT PLATING	SOLDER BALL	CAP STYLE
74217-001		15u" (.38um) Au OVER Ni	SnPb	STANDARD
74217-001LF	5 6		SnAgCu LEAD FREE	STANDARD
74217-091		15u" (.38um) GXT OVER Ni	SnPb	STANDARD
74217-091LF	5 6		SnAgCu LEAD FREE	STANDARD
74217-093		15u" (.38um) GXT OVER Ni	SnPb	SPECIAL WITH VENT HOLES
74217-093LF	5 6		SnAgCu LEAD FREE	SPECIAL WITH VENT HOLES
74217-093BF	8		SnPb	SPECIAL WITH VENT HOLES
74217-093BLF	5 6 8	15u" (.38um) GXT OVER Ni	SnAgCu LEAD FREE	SPECIAL WITH VENT HOLES
74217-101		30u" (.76um) Au OVER Ni	SnPb	STANDARD
74217-101LF	5 6		SnAgCu LEAD FREE	STANDARD
74217-191		30u" (.76um) GXT OVER Ni	SnPb	STANDARD
74217-191LF	5 6		SnAgCu LEAD FREE	STANDARD
74217-201		SEE NOTE 4.	SnPb	STANDARD
74217-201LF	5 6		SnAgCu LEAD FREE	STANDARD
74217-291		SEE NOTE 4.	SnPb	STANDARD
74217-291LF	5 6		SnAgCu LEAD FREE	STANDARD

NOTES:

1. **MAT'L:**  
 HOUSING: LCP  
 CONTACT: COPPER ALLOY

PLATING

CONTACT: (SEE TABLE ON SHEET1)  
 SOLDER BALL: (SEE TABLE ON SHEET1)  
 EUTECTIC SnPb OR LEAD FREE  
 95.5Sn/44Ag/0.5Cu

2. SOLDER BALLS WILL NOT BE PERFECT SPHERICAL SHAPE DUE TO REFLOW ATTACHMENT.

3. MATED HEIGHT EFFECTED BY CUSTOMER'S PCB PAD SIZE, PLATING, SOLDER REFLOW PROFILE, & SOLDER PASTE.

4. PLATING FOR -2XX SERIES DASH NOS. MEETS THE REQUIREMENTS OF CENTRAL OFFICE ENVIRONMENT, (25 YEAR LIFE EXPECTANCY).

5. FOR PROPER APPLICATION FOLLOW FCI APPLICATION SPECIFICATION GS-20-033 LEAD FREE SOLDER BALLS WILL NOT SOLDER PROPERLY IN A LEADED SOLDER PROCESS DUE TO A HIGHER REFLOW TEMPERATURE. LEAD FREE PRODUCT IS THEREFORE NOT BACKWARDS COMPATIBLE WITH LEADED OR SOME SOLDERING APPLICATIONS. REFERENCE FCI APPLICATION SPECIFICATION

6. THIS PRODUCT MEETS EUROPEAN UNION DIRECTIVES AND OTHER COUNTRY REGULATIONS AS DESCRIBED IN GS-47-0004 PRODUCT MEETING THIS DIRECTIVE IS IDENTIFIED IN THE LOT CODE NUMBER MARKED ON EACH PART BY HAVING AN "X" IN THE SEVENTH CHARACTER POSITION

7. VISIBLE KNIT LINES ANYWHERE ON THE FLOOR OF THE HOUSING ARE PERMITTED. OPEN KNIT LINES ANYWHERE ARE NOT PERMITTED.

8. FOR THESE DASH NUMBERS, PRODUCT IS BERYLLIUM FREE.

mat'l code	SEE NOTE 1	date	surface	tolerance	projection	product family
lfr	ecr no	dr	ASME Y14.5	ASME Y14.5	tolerances unless otherwise specified	MEG-Array
S			angles	X #3	MM	4mm RECPT. ASSY
			dr	XX #10	Scale 1:1	8 X 30 = 240POS.
			dr	XXX #050		74217
			engr	11.12.97		sheet 3 of 3
			chr	11.12.97		size A4
			appd	11.12.97		CUSTOMER Drawing
sheet index	revision	sheet				