

Excellent Integrated System Limited

Stocking Distributor

Click to view price, real time Inventory, Delivery & Lifecycle Information:

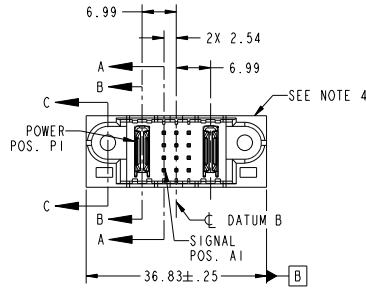
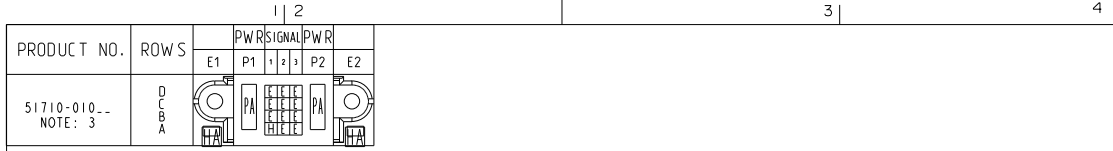
[FCI](#)
[51710-010](#)

For any questions, you can email us directly:
sales@integrated-circuit.com

Tous droits strictement réservés. Reproduction ou communication à des tiers interdite sous quelque forme que ce soit sans autorisation écrite du propriétaire. Propriété de FCI. Droits de reproduction FCI.



All rights strictly reserved. Reproduction or issue to third parties in any form whatever is not permitted without written authority from the proprietor. Property of FCI. Copyright FCI.



CODE	DIM "M" MATING LENGTH	CONTACT TYPE
PA	[N/A]	POWER
HA	[N/A]	HOLD-DOWN
E	[6.86]	SIGNAL
H	[5.59]	SIGNAL

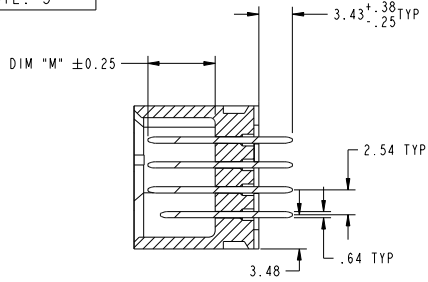
mat'l code				SEE NOTE		tolerances unless otherwise specified		CUSTOMER	
ltr	ecm no.	dr	date			0.X ± 0.5		projection	www.fciconnect.com
A	V04-0217	TAB	03/02/04	linear		0.XX ± 0.25		MM	IP + 12S + 1P
B	DG05-0389	GuoJM	10/13/05			0.XXX ± 0.10		scale: 1:1	VERTICAL SOLDER HEADER
C	DG07-0498	JW	09/15/08	angles		0" ± 2"			product family PwrBlade
				dr	T. BRUNGARD	03/02/04			code 213
				enrg	M. GRAY	03/02/04			sheet 1 of 4
				chr	M. GRAY	03/02/04			
				oppd	M. GRAY	03/02/04			
sheet index	revision sheet	C	C	C	C	C			cage code 22526
1	2	3	4						

Tous droits strictement réservés. Reproduction ou communication à des tiers interdite sous quelque forme que ce soit sans autorisation écrite du propriétaire. Propriété de FCI. Droits de reproduction FCI.

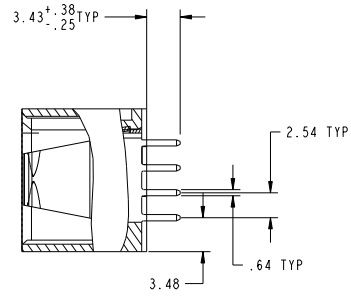
All rights strictly reserved. Reproduction or issue to third parties in any form whatever is not permitted without written authority from the proprietor. Property of FCI. Copyright FCI.



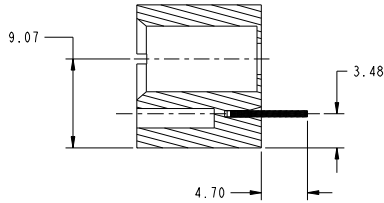
PRODUCT NUMBER
51710-010...
NOTE: 3



SECTION A-A
SCALE 2:1



SECTION B-B
SCALE 2:1



SECTION C-C
SCALE 2:1

mat'l code		SEE NOTE		tolerances unless otherwise specified		CUSTOMER		FCI	
ltr	ecm no.	dr	date	linear	0.X ±0.5	COPY	www.fciconnect.com		
c					0.XX ±0.25	projection		title	
				angles	0.XXX ±0.10			IP + 12S + 1P	
				dr	0° ±2°			VERTICAL SOLDER HEADER	
				enr	T. BRUNGARD 03/02/04	MM		product family PwrBlade code	
				chr	M. GRAY 03/02/04	scale		size	
				oppd	M. GRAY 03/02/04	1:1		dwg no	
sheet index	revision sheet							A 51710-010	
								213 sheet	
								2	

Pro/E

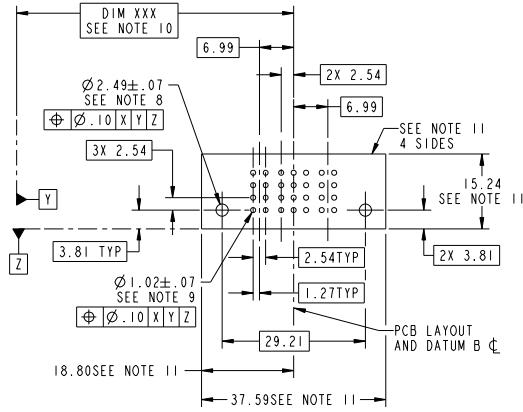
cage code 22526

Tous droits strictement réservés. Reproduction ou communication à des tiers interdite sous quelque forme que ce soit sans autorisation écrite du propriétaire. Propriété de FCI. Droits de reproduction FCI.



All rights strictly reserved. Reproduction or issue to third parties in any form whatever is not permitted without written authority from the proprietor. Property of FCI. Copyright FCI.

PRODUCT NUMBER
51710-010...
NOTE: 3



mat'l code		SEE NOTE		tolerances unless otherwise specified		CUSTOMER	
ltr	ecm no.	dr	date	linear	0. X ± 0.5	COPY	www.fciconnect.com
C				angles	0. XX ± 0.25	projection	
					0. XXX ± 0.10	MM	title
				dr	0° ± 2°	MM	IP + 12S + 1P
				enrg	T. BRUNGARD 03/02/04	MM	VERTICAL SOLDER HEADER
				chr	M. GRAY 03/02/04	MM	product family
				oppd	M. GRAY 03/02/04	MM	PwrBlade
sheet index	revision sheet					scale	size
						1:1	dwg no
							51710-010
							code
							213
							sheet
							3
							code
							22526

Tous droits strictement réservés. Reproduction ou communication à des tiers interdite sous quelque forme que ce soit sans autorisation écrite du propriétaire. Propriété de FCI. Droits de reproduction FCI.

All rights strictly reserved. Reproduction or issue to third parties in any form whatever is not permitted without written authority from the proprietor. Property of FCI. Copyright FCI.

PRODUCT NUMBER
51710-010
NOTE: 3

NOTES:

1. DIMENSIONS AND TOLERANCES ARE IN ACCORDANCE WITH ASME Y14.5M, 1994 UNLESS OTHERWISE SPECIFIED.

CONNECTOR NOTES:

② HOUSING MATERIAL: UL 94 V-0 GLASS FILLED HIGH-TEMP THERMOPLASTIC
POWER CONTACT MATERIAL: COPPER ALLOY
SIGNAL PIN MATERIAL: COPPER ALLOY

3. PLATING:
△ SEE ITEM 1 & 2 IN PRINT 10064183 FOR PLATING SPEC OF 51710-010; 51710-010LF RESPECTIVELY

④ MANUFACTURER'S NAME, P/N, AND DATE CODE TO APPEAR ON THIS SURFACE.

5. PRODUCT SPECIFICATION GS-12-149.
APPLICATION SPECIFICATION BUS-20-067.

6. PACKAGED IN TRAYS.

PCB NOTES:

7. ALL HOLE DIAMETERS ARE FINISHED HOLE SIZE.

8. MOUNTING HOLES, WHERE APPLICABLE, ARE UNPLATED.

⑨ $\varnothing 1.151 \pm 0.025$ DRILLED HOLES PLATED WITH 0.008 MIN SnPb OR Sn OVER 0.03 TO 0.08 Cu PLATING TO ACHIEVE $\varnothing 1.02 \pm .07$ HOLE.

⑩ "DIM XXX" TO BE DETERMINED BY THE CUSTOMER.

⑪ CONNECTOR KEEP-OUT ZONE.

12. A △ SYMBOL WILL BE NEXT TO ANY DIMENSION, VIEW, OR NOTE WHICH HAS BEEN MODIFIED WITH THE CURRENT DRAWING REVISION.

mat'l code		SEE NOTE		tolerances unless otherwise specified		CUSTOMER		FCI	
ltr	ecm no.	dr	date	linear	angular	projection	copy	title	www.fciconnect.com
C				$0.X \pm 0.5$	$0.XX \pm 0.25$		COPY	IP + 12S + 1P VERTICAL SOLDER HEADER	
				$0.XXX \pm 0.10$	$0^\circ \pm 2^\circ$			product family PwrBlade	code 213
				dr T. BRUNGARD 03/02/04		scale 1:1		size A	sheet 4
				engr M. GRAY 03/02/04				dwg no 51710-010	
				chr M. GRAY 03/02/04					
				oppd M. GRAY 03/02/04					
sheet index	revision sheet								

Pro/E

cage code 22526