

Excellent Integrated System Limited

Stocking Distributor

Click to view price, real time Inventory, Delivery & Lifecycle Information:

[FCI](#)

[52599-050LF](#)

For any questions, you can email us directly:

sales@integrated-circuit.com

PRODUCT NO.	DIM.L	DIM.S
52599-022/022LF	2.2	1.0
52599-043/043LF	4.3	-0.3
52599-050/050LF	5.0	-0.3

NOTES:

- MATERIAL:**
 - EJECT HEADER ASS'Y**
PLASTIC HOUSING: HIGH TEMPERATURE THERMOPLASTIC UL94V-0 BLACK
PIN: COPPER ALLOY
PCB: FR4
PLASTIC GUIDE: HIGH TEMPERATURE THERMOPLASTIC UL94V-0 BLACK
 - RECEPTACLE**
PLASTIC: HIGH TEMPERATURE THERMOPLASTIC UL94V-0 BLACK
PIN: BeCu
- FINISH**
PIN :
UNDER PLATING: 1.27 um MIN. Ni
CONTACT AREA: 0.076 um MIN. GOLD

SOLDER TAIL: 2.5 um MIN. Sn-Pb
: 2.5 um MIN. PURE Sn (FOR -***LF)

GROUND SHIELD :
UNDER PLATING: 1.27 um MIN. Ni
CONTACT SURFACE: 0.2 um GOLD (ONE SIDE ONLY)
- P.C.B. ARE AS APPEARS INSTALLED**
- DIM "X"**

4.25±0.1	3.5±0.1	5.0±0.1
OTHERS	36,67	1,17,34,35,51,68
- DO NOT TOUCH AND KEEP CLEAN THE SURFACES OF PCB OF HEADER ASS'Y.**
- IF LEAD FREE P/N. THE HOUSING WILL WITHSTAND EXPOSURE TO 260°C PEAK TEMPERATURE FOR 10 SECONDS IN A WAVE SOLDER APPLICATION WITH A 1.00MM MINIMUM THICK CIRCUIT BOARD.**
- LEAD FREE PRODUCT MEETS EUROPEAN UNION DIRECTIVES AND OTHER COUNTRY REGULATIONS AS DESCRIBED IN GS-22-008**
- IF LEAD FREE P/N. PACKAGING MEETS GS-14-920 SPECIFICATION**
- PRODUCT SPEC:110-263**

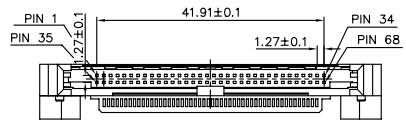
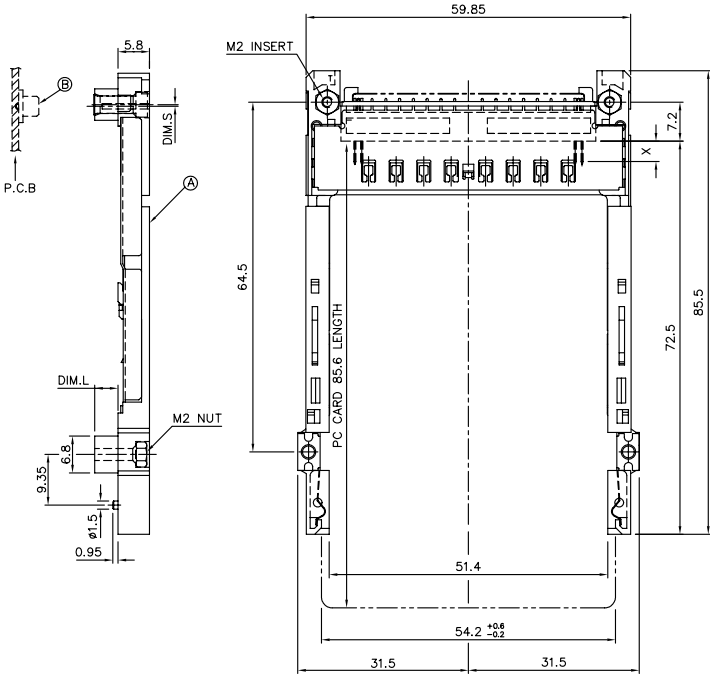
ORDERING INFORMATION

NAME	PART NO.	Q'TY
Ⓐ EJECT HEADER ASS'Y	52599-***/**LF	1
Ⓑ MATING RECEPTACLE	73277-101000/101402LF	1

mat'l. code	surface	tolerance	projection	product family
H	ISO 1302	ISO 406 ISO 1101	1:1	CARDBUS
ltr	ecn	ndr	date	tolerances unless otherwise specified
B	T00270	WL	09/04/00	± 0.30
C	N05-0135	WB	05/27/05	±2'
D	N05-0316	MZ	11/18/05	dr
E	N05-0081	MZ	03/28/06	engr
F	N06-0220	MZ	06/18/06	chr
G	N08-0028	MZ	11/21/06	appd
sheet	revision	H	H	H
index	sheet	1	2	3



product family
CARDBUS
title
CARDBUS NONE PUSH
ROD, TYPE 1/2/3
dwg no
52599
sheet 1 of 5
size
A4
type
CUSTOMER
Drawing



P/N: 52599-***/**LF
ABOVE P.C.B

FCI CONFIDENTIAL

FCIconnect.com
This document is the property of and embodies CONFIDENTIAL PROPRIETARY information of FCI. No part of the information disclosed herein may be reproduced, stored in a retrieval system, or transmitted in any form or by any means, without the written consent of FCI.
Copyright FCI.

PRODUCT NO.	DIM.L	DIM.S
52599-550	5.0	-0.3
52599-550LF	5.0	-0.3
52599-550MLF	5.0	-0.3

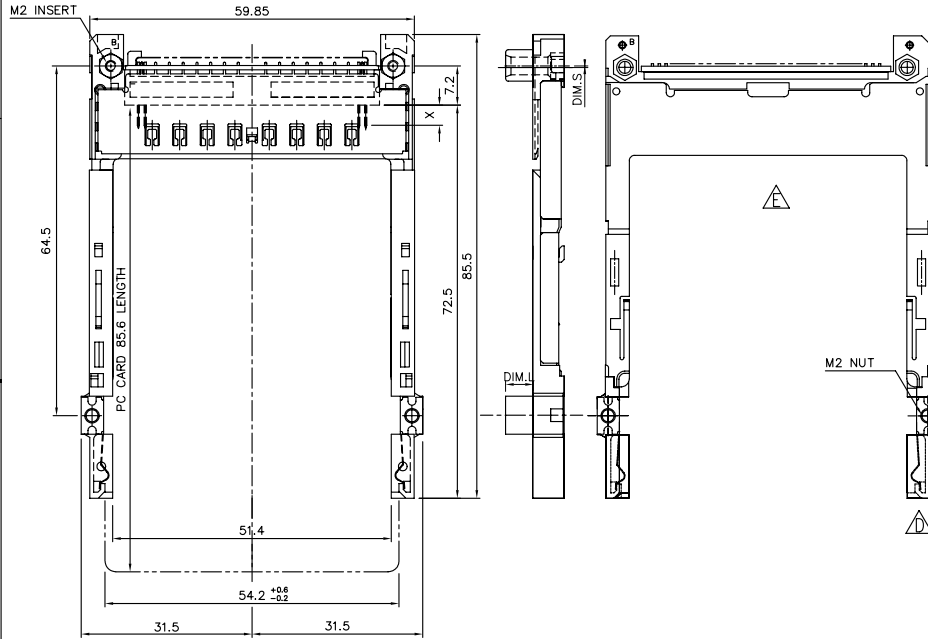
NOTES:

- MATERIAL:**
 - EJECT HEADER ASS'Y**
PLASTIC HOUSING: HIGH TEMPERATURE THERMOPLASTIC UL94V-0 BLACK
PIN: COPPER ALLOY
PCB: FR4
PLASTIC GUIDE: HIGH TEMPERATURE THERMOPLASTIC UL94V-0 BLACK
 - RECEPTACLE**
PLASTIC: HIGH TEMPERATURE THERMOPLASTIC UL94V-0 BLACK
PIN: BeCu
- FINISH**
PIN :
UNDER PLATING: 1.27 μ m MIN. Ni
CONTACT AREA 1: 0.076 μ m MIN. GOLD

CONTACT AREA 2 : 0.076 μ m MIN. GOLD (FOR****-MLF)
SOLDER TAIL:1) 2.5 μ m MIN. Sn-Pb
 :2) 2.5 μ m MIN. PURE Sn (FOR -***LF&-***MLF)

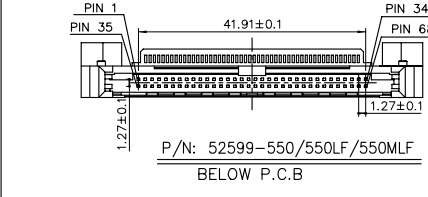
GROUND SHIELD :
UNDER PLATING: 1.27 μ m MIN. Ni
CONTACT SURFACE: 0.2 μ m GOLD (ONE SIDE ONLY)
- P.C.B. ARE AS APPEARS INSTALLED
- DIM "X"

4.25 \pm 0.1	3.5 \pm 0.1	5.0 \pm 0.1
OTHERS	36,67	1,17,34,35,51,68
- DO NOT TOUCH AND KEEP CLEAN THE SURFACES OF PCB OF HEADER ASS'Y.
- IF LEAD FREE P/N. THE HOUSING WILL WITHSTAND EXPOSURE TO 260°C PEAK TEMPERATURE FOR 10 SECONDS IN A WAVE SOLDER APPLICATION WITH A 1.00MM MINIMUM THICK CIRCUIT BOARD.
- LEAD FREE PRODUCT MEETS EUROPEAN UNION DIRECTIVES AND OTHER COUNTRY REGULATIONS AS DESCRIBED IN GS-22-008
- IF LEAD FREE P/N. PACKAGING MEETS GS-14-920 SPECIFICATION
- PRODUCT SPEC:110-263



ORDERING INFORMATION

NAME	PART NO.	Q'TY
(A) EJECT HEADER ASS'Y	52599-***/**/LF	1
(B) MATING RECEPTACLE	73277-101000/101402LF	1



mat'l. code	surface ISO 1302	tolerance ISO 406 ISO 1101	projection MM	product family CARDBUS
ltr ecn nd dr date	tolerances unless otherwise specified	linear \pm 0.30	scale 1:2:1	title CARDBUS NONE PUSH ROD, TYPE 1/2/3
H	angles \pm 2'			dwg no 52599
	dr Mike Zhou 08/18/06	enfr Mike Zhou 08/18/06	chr Mike Zhou 08/18/06	sheet 2 of 5 size A4
	appd Qin David 08/18/06			type CUSTOMER Drawing
sheet index	revision sheet			

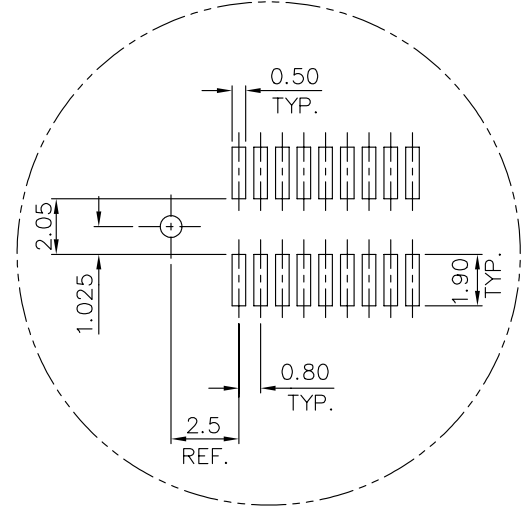
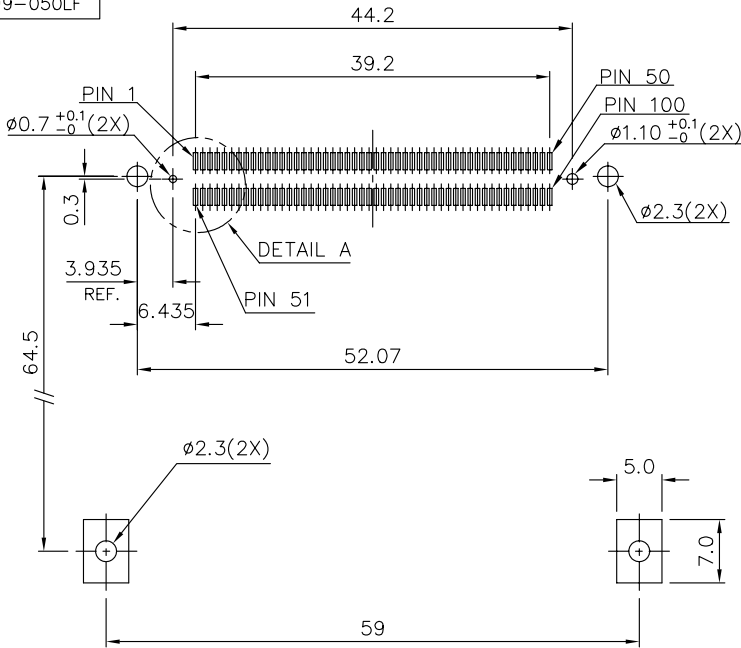
FCI CONFIDENTIAL

FCIconnect.cdf

This document is the property of and embodies CONFIDENTIAL PROPRIETARY information of FCI. No part of the information disclosed herein may be reproduced, stored in a retrieval system, or transmitted in any form or by any means, without the written consent of FCI. Copyright FCI.

FCI CONFIDENTIAL

PRODUCT NO.
52599-043
52599-050
52599-043LF
52599-050LF



DETAIL A

4 CARD INSERTION DIRECTION

mat'l. code	surface	tolerance	projection	product family
	ISO 1302	ISO 406 ISO 1101	1:1	CARDBUS
ltr ecn nd dr date	tolerances	unless otherwise specified	title	
H	±2'	linear ± 0.10	MM	CARDBUS NONE PUSH ROD, TYPE 1/2/3
dr	Mike Zhou	08/18/06	scale 1:1	dwg no
enfr	Mike Zhou	08/18/06		52599
chr	Mike Zhou	08/18/06		sheet 3 of 5
appd	Qin David	08/18/06		A4
sheet index	revision sheet			type CUSTOMER Drawing

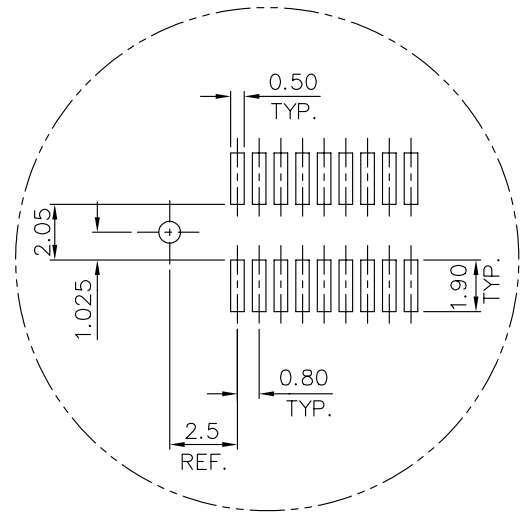
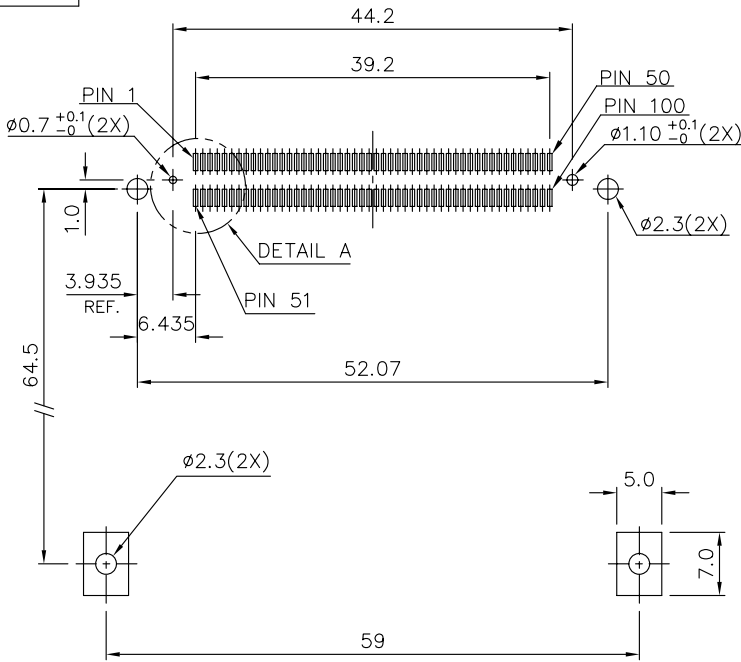
4 PDS: Rev :H

STATUS: Released

Printed: Sep 12, 2013

This document is the property of and embodies CONFIDENTIAL PROPRIETARY information of FCI. No part of the information disclosed herein may be reproduced, stored in a retrieval system, or transmitted in any form or by any means, without the written consent of FCI. Copyright FCI. FCIconnect.cdf

PRODUCT NO.
52599-022
52599-022LF



DETAIL A

4 CARD INSERTION DIRECTION

mat'l. code	surface	tolerance	projection	product family
	ISO 1302	ISO 406 ISO 1101		CARDBUS
ltr ecn nd dr date	tolerances	unless otherwise specified	title	
H	angles	linear ± 0.10	MM	CARDBUS NONE PUSH ROD, TYPE 1/2/3
	±2'	scale 1:1		
dr	Mike Zhou	08/18/06	FCI	dwg no
enfr	Mike Zhou	08/18/06		sheet 4 of 5
chr	Mike Zhou	08/18/06		52599
appd	Qin David	08/18/06		A4
sheet index	revision sheet		type	CUSTOMER Drawing

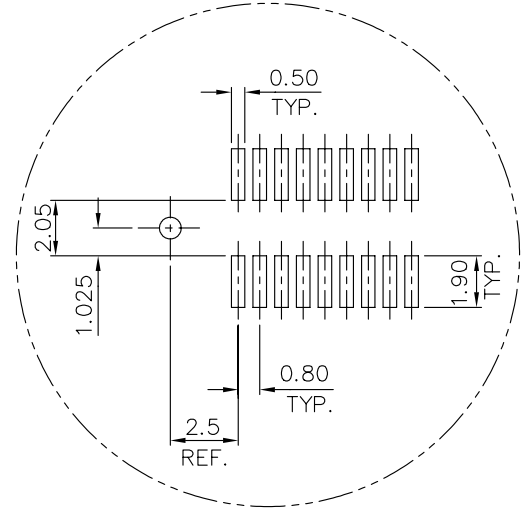
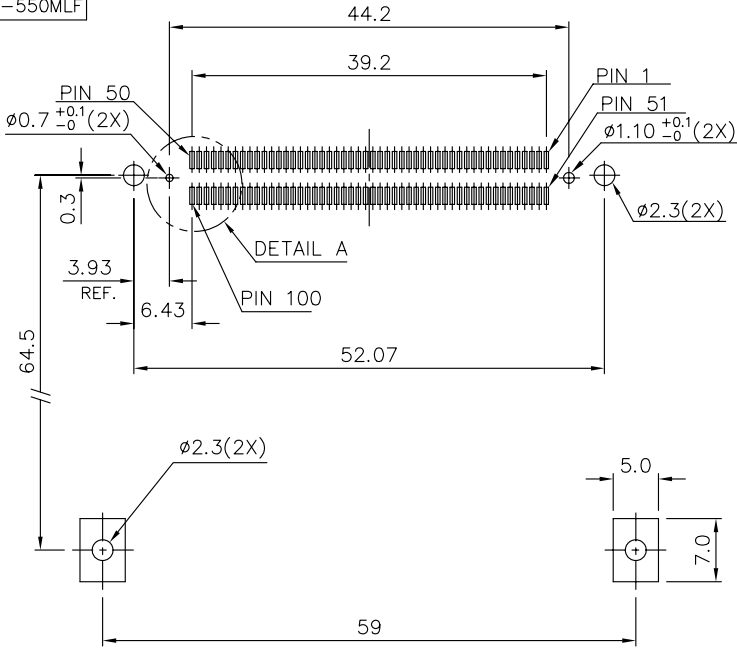
4 PDS: Rev :H

STATUS: released

Printed: Sep 12, 2013

This document is the property of and embodies CONFIDENTIAL PROPRIETARY information of FCI. No part of this information is to be disclosed, copied, reproduced, or transmitted in any form or by any means without the written consent of FCI. Copyright FCI. FCIconnect.cdf

PRODUCT NO.
52599-550
52599-550LF
52599-550MLF



DETAIL A

4 CARD INSERTION DIRECTION

mat'l. code	surface	tolerance	projection	product family
	ISO 1302	ISO 406 ISO 1101		CARDBUS
ltr ecn nd dr date	tolerances	unless otherwise specified	title	
H	angles	linear ± 0.10	MM	CARDBUS NONE PUSH ROD, TYPE 1/2/3
	±2'		scale 1:1	
dr	Mike Zhou	08/18/06	FCI	dwg no
engr	Mike Zhou	08/18/06		sheet 5 of 5
chr	Mike Zhou	08/18/06		size
appd	Qin David	08/18/06		A4
sheet index	revision sheet			type CUSTOMER Drawing

4 PDS: Rev :H

STATUS: released

Printed: Sep 12, 2013

This document is the property of and embodies CONFIDENTIAL PROPRIETARY information of FCI. No part of the information disclosed herein may be reproduced, stored in a retrieval system, or transmitted in any form or by any means, without the written consent of FCI. Copyright FCI. FCIconnect.cdf