

## Excellent Integrated System Limited

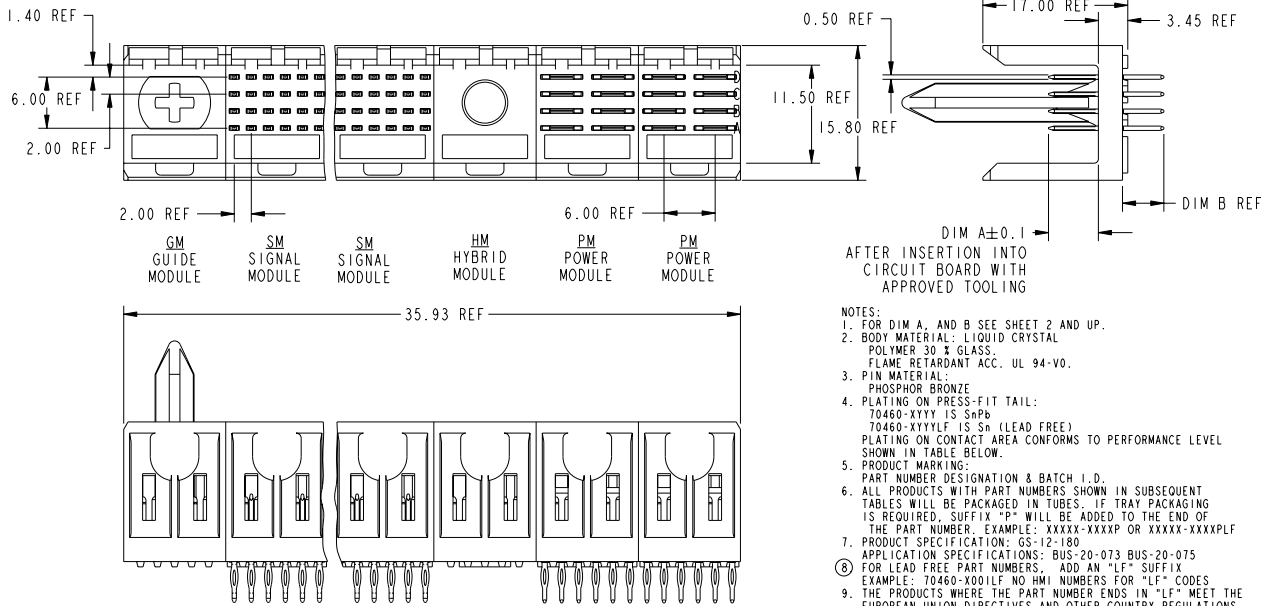
Stocking Distributor

Click to view price, real time Inventory, Delivery & Lifecycle Information:

[FCI](#)  
[70460-1004LF](#)

For any questions, you can email us directly:  
[sales@integrated-circuit.com](mailto:sales@integrated-circuit.com)

PRODUCT NUMBER
70460-XXXX
70460-XXXXLF



- NOTES:
- FOR DIM A, AND B SEE SHEET 2 AND UP.
  - BODY MATERIAL: LIQUID CRYSTAL POLYMER 30% GLASS. FLAME RETARDANT ACC. UL 94-V0.
  - PIN MATERIAL: PHOSPHOR BRONZE
  - PLATING ON PRESS-FIT TAIL:  
70460-XXXX IS SnPb  
70460-XXXXLF IS Sn (LEAD FREE)  
PLATING ON CONTACT AREA CONFORMS TO PERFORMANCE LEVEL SHOWN IN TABLE BELOW.
  - PRODUCT MARKING:  
PART NUMBER DESIGNATION & BATCH I.D.
  - ALL PRODUCTS WITH PART NUMBERS SHOWN IN SUBSEQUENT TABLES WILL BE PACKAGED IN TUBES. IF TRAY PACKAGING IS REQUIRED, SUFFIX "P" WILL BE ADDED TO THE END OF THE PART NUMBER. EXAMPLE: XXXXX-XXXXP OR XXXXX-XXXXPLF
  - PRODUCT SPECIFICATION: GS-12-180
  - APPLICATION SPECIFICATIONS: BUS-20-073 BUS-20-075 FOR LEAD FREE PART NUMBERS. ADD AN "LF" SUFFIX EXAMPLE: 70460-X001LF NO HMI NUMBERS FOR "LF" CODES
  - THE PRODUCTS WHERE THE PART NUMBERS ENDS IN "LF" MEET THE EUROPEAN UNION DIRECTIVES AND OTHER COUNTRY REGULATIONS AS DESCRIBED IN GS-22-008.
  - ALL PRODUCTS WILL WITHSTAND EXPOSURE TO 260° C FOR 60 SECONDS IN A CONVENTION, INFRA-RED OR VAPOR PHASE REFLOW OVEN.

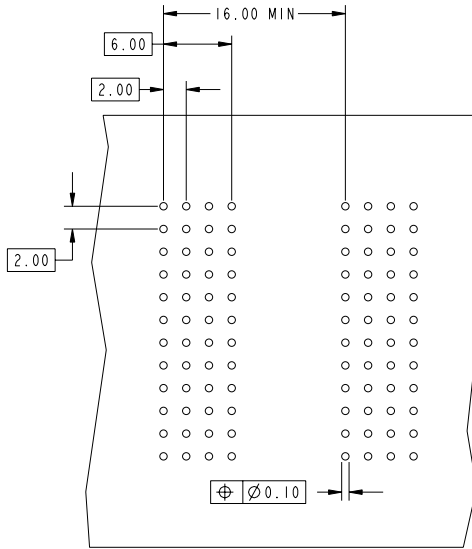
**PLATING IN CONTACT AREA**

DASH NUMBER	PERFORMANCE LEVEL
-1YYY	TELCORDIA CO NO CLASS I
-2YYY	TELECOM CLASS
-3YYY	TELCORDIA CO & IEC CLASS I
-5YYY	TELCORDIA UE
-9YYY	TELCORDIA CO & IEC CLASS I
-1YYYYF	TELCORDIA CO & IEC CLASS I
-2YYYYF	TELECOM CLASS
-5YYYYF	TELCORDIA UE

mat'l code				tolerances unless otherwise specified		CUSTOMER	
ltr	ecn no.	dr	date	0.X ±0.3	COPY		
C	V02628	JRW	10-16-00	0.XX ±0.13	projection		
D	V10189	LSS	01/08/01	0.XXX ±.051	title		
E	V11883	LSS	08/28/01	0° ±2°	MONOBLOCK HEADER ASSEMBLY		
F	V04-1138	LP	4/21/05	T.BRUNGARD 06/05/00	product family		
G	V06-0498	DCH	2006-06-05	M.STRAWER 5/31/00	size		
				M.STRAWER 06/05/00	METRAL		
				M.STRAWER 06/05/00	code		
sheet index	revision sheet	G	G	G	70460		
		1	2	3	213		
					sheet 1 of 3		

This document is the property of and embodies CONFIDENTIAL and PROPRIETARY information of FCI. No part of the information shown on this document may be used in any way or disclosed to anyone without the written consent of FCI. Copyright FCI.

KEY (SIGNAL PRESS-FIT)		
CODE	DIMENSIONS	
	DIM "A" MATE	DIM "B" TAIL
1	5.00	4.30
2	5.75	4.30
3	6.50	4.30
54	5.00	11.50



KEY (POWER PRESS-FIT)		
CODE	DIMENSIONS	
	DIM "A" MATE	DIM "B" TAIL
P01	6.50	4.30
P02	7.25	4.30
P03	8.00	4.30
P06	8.00	13.60
P13	6.50	12.95

REQUIRED PC BOARD LAYOUT  
COMPONENT SIDE

SEE PRINT 58351 FOR ADDITIONAL  
PCB INFORMATION

mat'l code				tolerances unless otherwise specified		CUSTOMER		FCI		www.fciconnect.com	
ltr	ecm no.	dr	date	linear	0.X ±0.3	COPY		projection	title		
G					0.XX ±0.13	MM			MONOBLOCK HEADER ASSEMBLY		
				angles	0.XXX ±.051	A			PRESS-FIT, 4 ROW 3 MOD		
				dr	0° ±2°	scale		product family		code	
				eng	T. BRUNGARD 06/05/00	2:1		METRAL		213	
				chr	M. STRAWSER 5/31/00	A		size		sheet	
				appd	M. STRAWSER 06/05/00			70460		2	
sheet index	revision sheet										

This document is the property of and embodies  
 CONFIDENTIAL and PROPRIETARY information of FCI.  
 No part of the information shown on this  
 document may be used in any way or disclosed  
 without the written consent of FCI.  
 Copyright FCI.


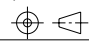
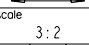
METRAL P/N	ROW	SM						SM						PM								
		1	2	3	4	5	6	7	8	9	10	11	12	13	14	15	16	17	18			
70460-X001 SEE NOTE 8 LEAD FREE OPTION	D	2	2	2	2	2	2	2	2	2	2	2	2	P01				P01				
	C	2	2	2	2	2	2	2	2	2	2	2	2	P01				P01				
	B	2	2	2	2	2	2	2	2	2	2	2	2	P01				P01				
	A	2	2	2	2	2	2	2	2	2	2	2	2	P01				P01				

METRAL P/N	ROW	SM						PM						SM								
		1	2	3	4	5	6	7	8	9	10	11	12	13	14	15	16	17	18			
70460-X005 SEE NOTE 8 LEAD FREE OPTION	D	I	I	I	I	I	I	P01				P01					I	I	I	I	I	I
	C	I	I	I	I	I	I	P02				P02					I	I	I	I	I	I
	B	I	I	I	I	I	I	P03				P03					I	I	I	I	I	I
	A	I	I	I	I	I	I	P03				P03					I	I	I	I	I	I

METRAL P/N	ROW	SM						SM						PM								
		1	2	3	4	5	6	7	8	9	10	11	12	13	14	15	16	17	18			
70460-X002 SEE NOTE 8 LEAD FREE OPTION	D	I	I	I	I	I	I	I	I	I	I	I	I	P01				P01				
	C	I	I	I	I	I	I	I	I	I	I	I	I	P01				P01				
	B	I	I	I	I	I	I	I	I	I	I	I	I	P03				P03				
	A	I	I	I	I	I	I	I	I	I	I	I	I	P01				P01				

METRAL P/N	ROW	SM						SM						PM								
		1	2	3	4	5	6	7	8	9	10	11	12	13	14	15	16	17	18			
70460-X003 SEE NOTE 8 LEAD FREE OPTION	D	54	54	54	54	54	54	54	54	54	54	54	54	P13				P13				
	C	54	54	54	54	54	54	54	54	54	54	54	54	P13				P13				
	B	54	54	54	54	54	54	54	54	54	54	54	54	P06				P06				
	A	54	54	54	54	54	54	54	54	54	54	54	54	P13				P13				

METRAL P/N	ROW	GM						SM						GM							
		1	2	3	4	5	6	7	8	9	10	11	12	13	14	15	16	17	18		
70460-X004 SEE NOTE 8 LEAD FREE OPTION	D	-	-	-	-	-	-	3	-	3	3	3	-	-	-	-	-	-	-	-	-
	C	-	-	-	-	-	-	3	-	3	3	3	-	-	-	-	-	-	-	-	-
	B	-	-	-	-	-	-	3	-	3	3	3	-	-	-	-	-	-	-	-	-
	A	-	-	-	-	-	-	3	-	3	3	3	-	-	-	-	-	-	-	-	-

mat'l code		--		tolerances unless otherwise specified		CUSTOMER				www.fciconnect.com	
ltr	ecm no.	dr	date	linear	0.X ± 0.3	projection	COPY	title	MONOBLOCK HEADER ASSEMBLY		
G				angles	0.XX ± 0.13			PRESS-FIT, 4 ROW 3 MOD			
				dr	0.XXX ± .051			product family	METRAL	code	213
				eng	0° ± 2°	scale	A	size	70460	sheet	3
				chr		3:2		dwg no			
				appd							
sheet index	revision sheet										

This document is the property of and embodies CONFIDENTIAL and PROPRIETARY information of FCI. No part of the information shown on this document may be used in any way or disclosed without the written consent of FCI. Copyright FCI.