

Excellent Integrated System Limited

Stocking Distributor

Click to view price, real time Inventory, Delivery & Lifecycle Information:

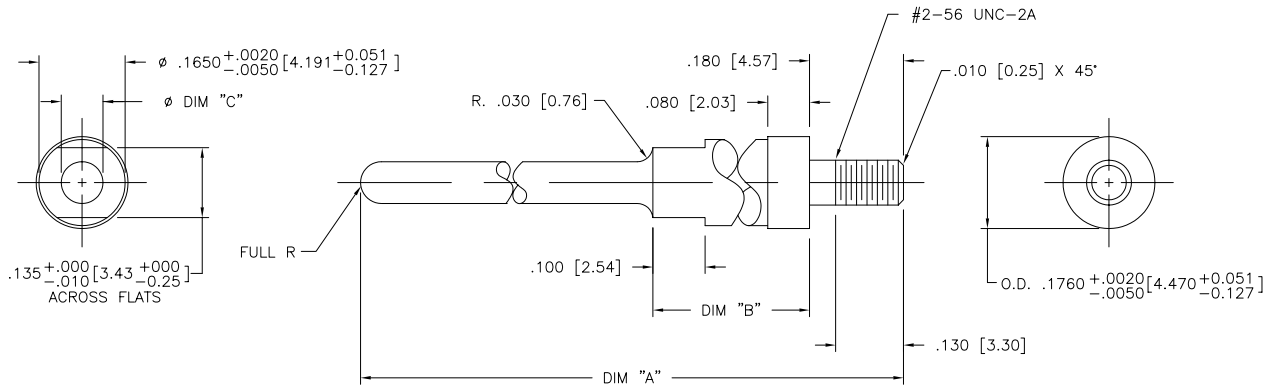
[FCI](#)

[71225-003LF](#)

For any questions, you can email us directly:

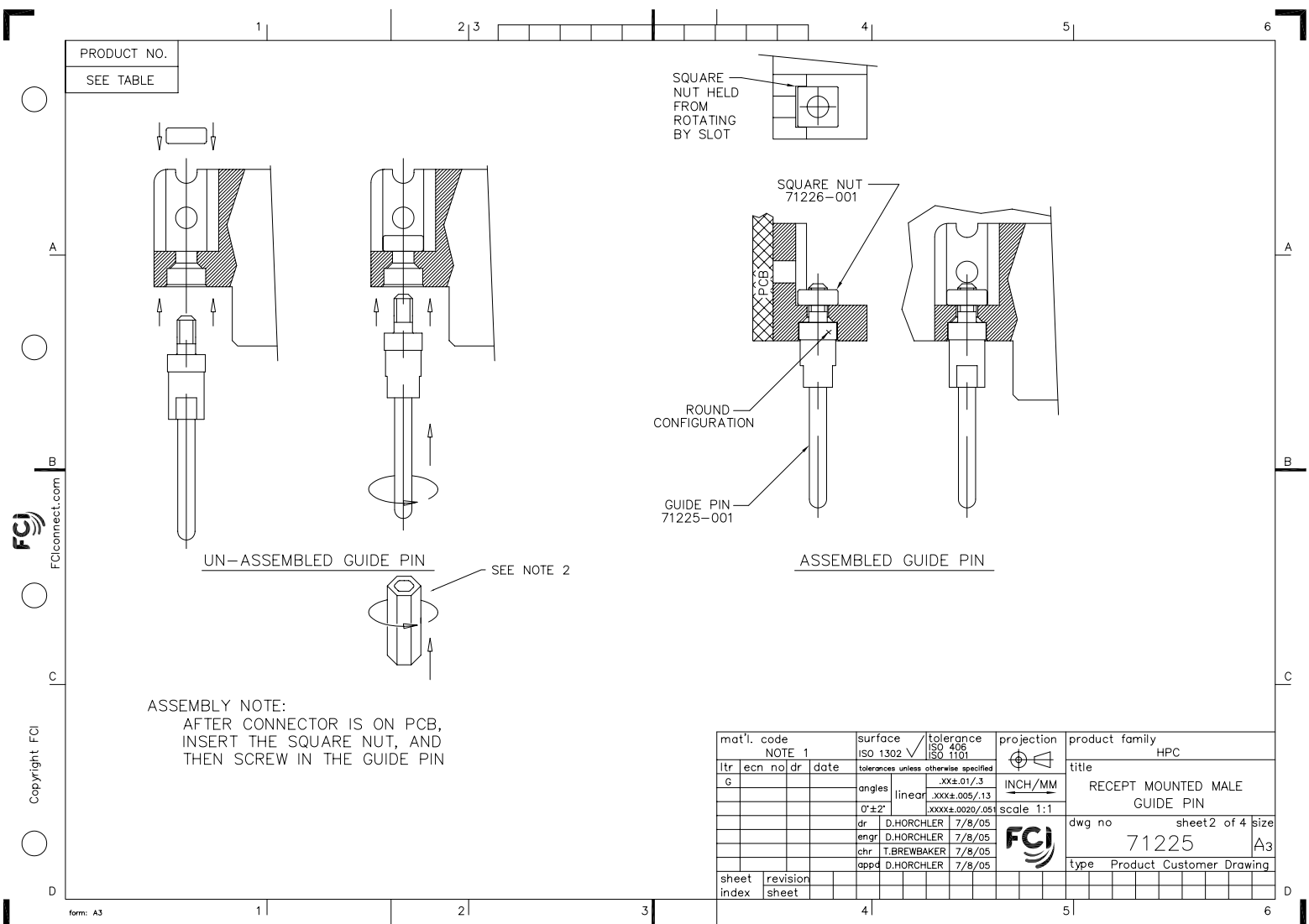
sales@integrated-circuit.com

PRODUCT NO.	DIM "A"	DIM "B"	Ø DIM "C"	
71225-001	1.040/26.41	.300/7.62	.080/2.03	
71225-002	.955/24.25	.300/7.62	.080/2.03	
71225-003	.955/24.25	.380/9.65	.090/2.28	
71225-001LF	1.040/26.41	.300/7.62	.080/2.03	NOTE 3
71225-002LF	.955/24.25	.300/7.62	.080/2.03	NOTE 3
71225-003LF	.955/24.25	.380/9.65	.090/2.28	NOTE 3



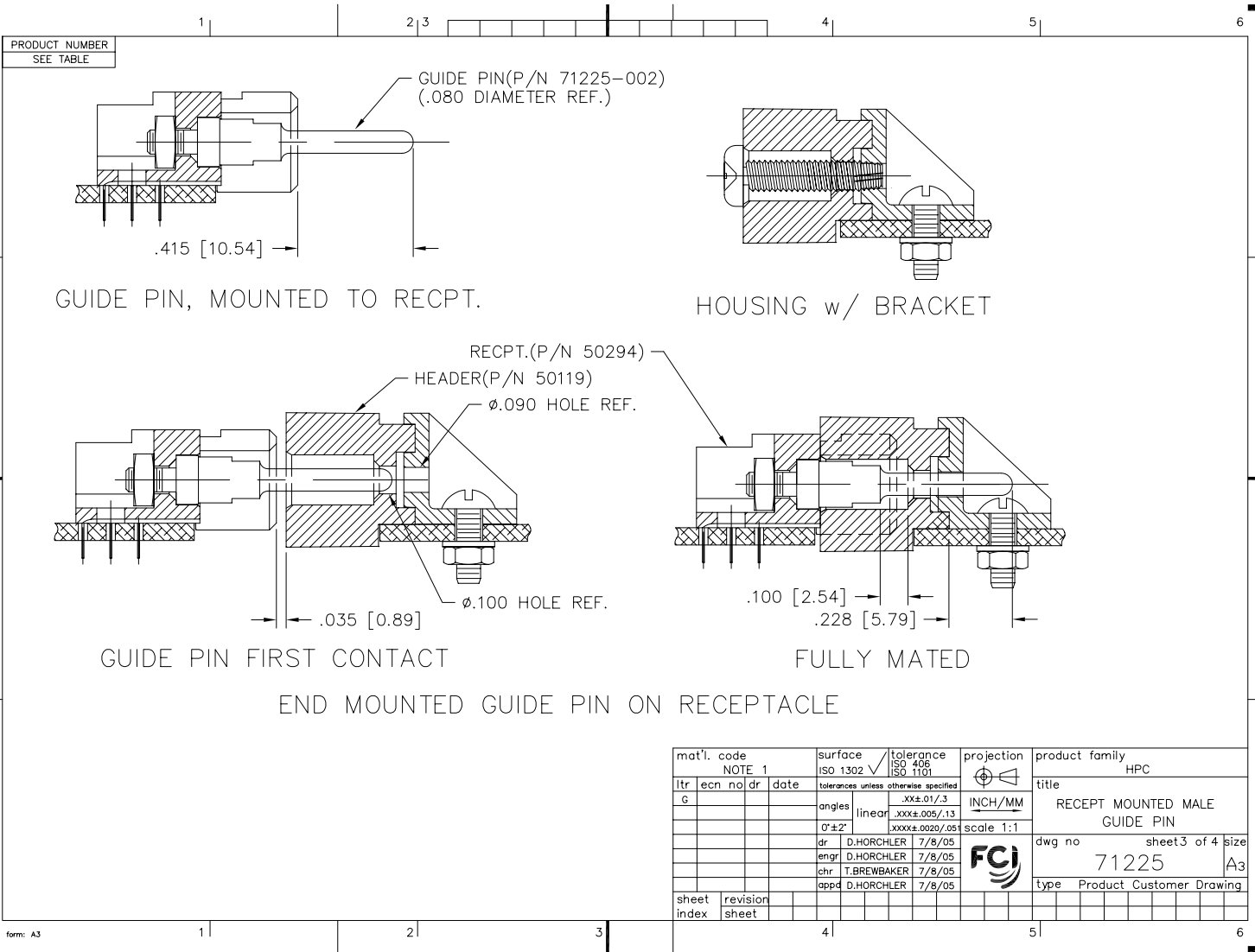
- NOTE:
1. MATERIAL: 416 STAINLESS STEEL.
 2. RECOMMENDED INSTALLATION TOOL: P/N 166769-001 (FOR USE IN 1/4" HEX DRIVE).
 3. THIS PRODUCT MEETS EUROPEAN UNION DIRECTIVES AND OTHER COUNTRY REGULATIONS AS DESCRIBED IN GS-22-008.

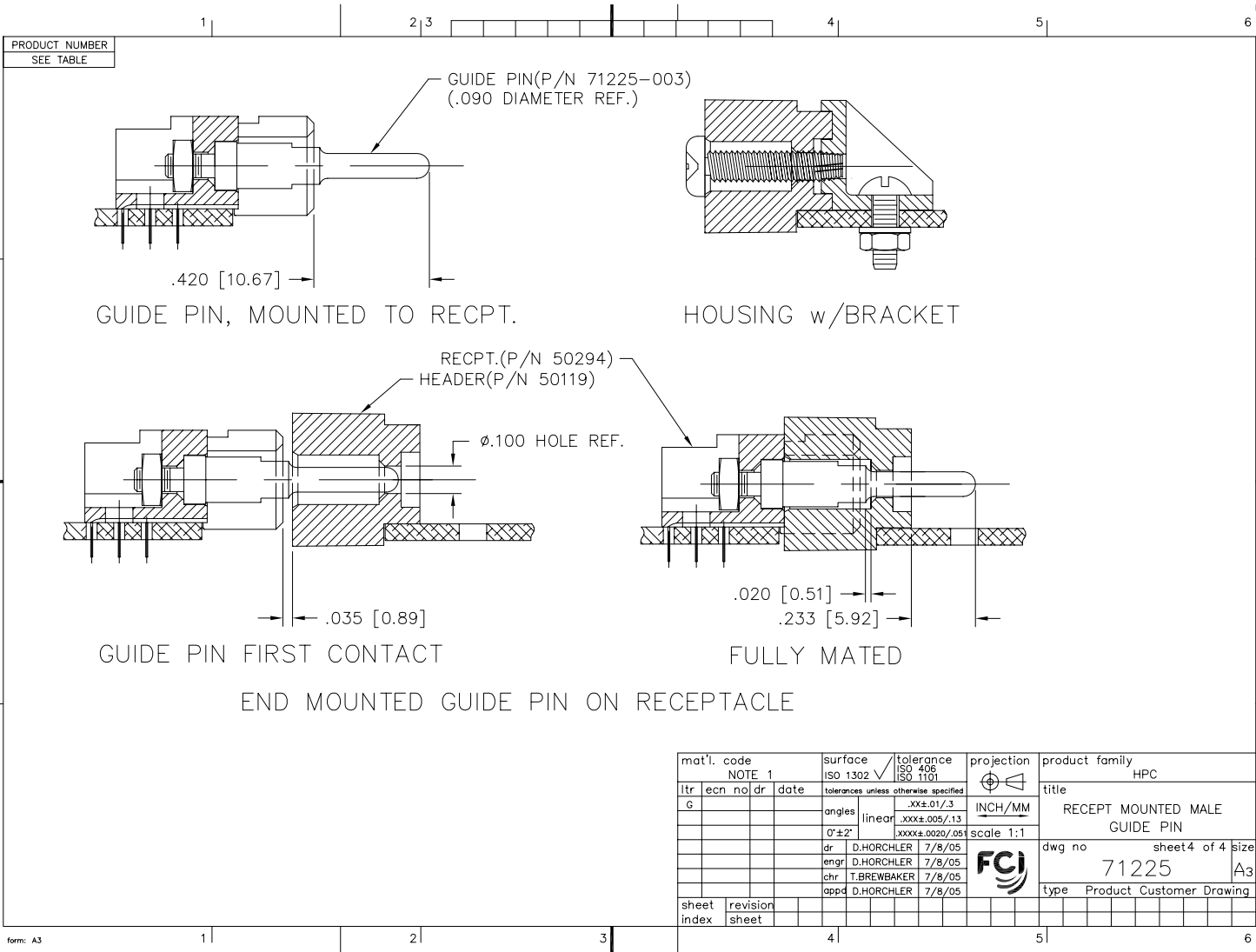
mat'l. code		surface		tolerance		projection		product family	
NOTE 1		ISO 1302		ISO 406		ISO 1101		HPC	
ltr	ecr	no	ldr	date	tolerances unless otherwise specified		INCH/MM		title
A	V50946	GAH		8/8/95	angles	.XX±.01/.3	scale 1:1		RECEIPT MOUNTED MALE GUIDE PIN
B	V51393	SAR		8/8/95	linear	.XXX±.005/.13			dwg no 71225 sheet 1 of 4 size A3
C	V60897	GIP		6/10/96	0'±2'	.XXXX±.0020/.05			type Product Customer Drawing
D	V60971	GIP		6/25/00	dr	D.HORCHLER 7/8/05			
E	V00558	LSS		3/3/00	engr	D.HORCHLER 7/8/05			
F	V05-0643	DCH		7/8/05	chr	T.BREWBAKER 7/8/05			
G	M06-0283	MHT		7/27/06	appd	D.HORCHLER 7/8/05			
sheet	revision	G	G	G	G				
index	sheet	1	2	3	4				



ASSEMBLY NOTE:
 AFTER CONNECTOR IS ON PCB,
 INSERT THE SQUARE NUT, AND
 THEN SCREW IN THE GUIDE PIN

mat'l. code		surface	tolerance	projection	product family	
NOTE 1		ISO 1302	ISO 406		HPC	
G		tolerances unless otherwise specified	ISO 1101		INCH/MM	title
		angles	.XX±.01/.3	scale 1:1	RECEPT MOUNTED MALE GUIDE PIN	
		linear	.XXX±.005/.13		dwg no	sheet 2 of 4 size
		0°±2'	.XXXX±.0020/.05		71225	A3
		dr	D.HORCHLER 7/8/05		type	Product Customer Drawing
		engr	D.HORCHLER 7/8/05			
		chr	T.BREWBAKER 7/8/05			
		appd	D.HORCHLER 7/8/05			
sheet	revision					
index	sheet					





mat'l. code		surface	tolerance	projection	product family
NOTE 1		ISO 1302	ISO 406		HPC
ltr	ecr	date	ISO 1101		title
G			tolerances unless otherwise specified	INCH/MM	RECEPT MOUNTED MALE GUIDE PIN
			angles .XX±.01/.3	scale 1:1	dwg no 71225 sheet 4 of 4 size A3
			linear .XXX±.005/.13		type Product Customer Drawing
			0°±2'		
		dr	D.HORCHLER 7/8/05		
		enrg	D.HORCHLER 7/8/05		
		chr	T.BREWBAKER 7/8/05		
		appd	D.HORCHLER 7/8/05		
sheet	revision				
index	sheet				