

Excellent Integrated System Limited

Stocking Distributor

Click to view price, real time Inventory, Delivery & Lifecycle Information:

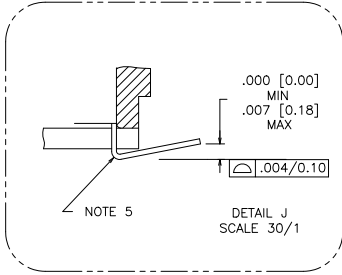
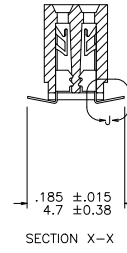
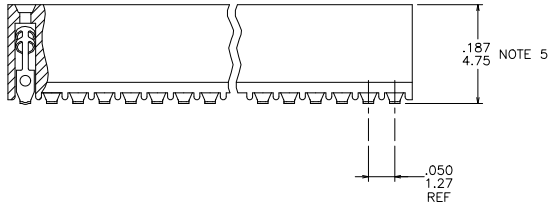
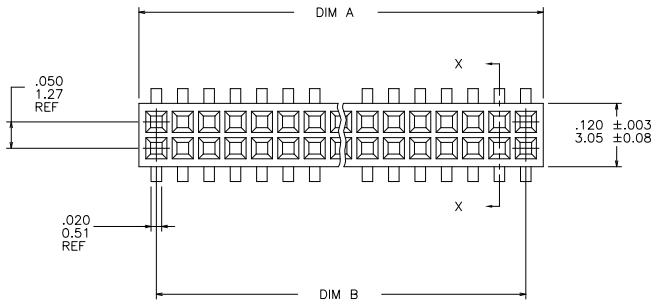
[FCI](#)

[87021-610LF](#)

For any questions, you can email us directly:

sales@integrated-circuit.com

PRODUCT NUMBER
SEE TABLE



matl. code	-	surface	ISO 1302 ✓	tolerance	ISO 406 ISO 1101	projection	product family
ltr	ecn no	dr	date	tolerances unless otherwise specified		INCH/MM	title
S	V10994	DLW	3/9/01	angles	linear	scale 4:1	.050/1.27 CC VERT CARD
T	V11674	CRG	6/22/01	0°±2'	.XXX±.005/0.13		CONN. ASSY. SURFACE MOUNT
U	M05-0088	MHT	5/12/05		.XXX±.0025/0.051		dwg no
V	M06-0225	ERE	6/12/06	dr	M. CLOUSER	6/26/91	sheet 1 of 3 size
W	M06-0370	MHT	9/26/06	engr	D. WHITING	6/26/91	A3
X	M09-0058	CMR	4/06/09	chr	C. GINGRICH	6/26/91	87021
Y	EX-N-01002	YO	1/30/12	appd	D. WHITING	6/26/91	type
sheet index	revision	Y	Y	Y			Product Customer Drawing
	sheet	1	2	3			

PRODUCT NO. NOTE 8	SIZE	DIM A	DIM B	SPECIAL PACKAGING	TAPE		PIECES PER REEL
					WIDTH	PITCH	
87021-605	2 X 5	.266/6.756	.200/5.08	NOTE 6	24MM	12MM	750
-610	2 X 10	.516/13.106	.450/11.43	NOTE 6	24MM	12MM	750
-615	2 X 15	.766/19.456	.700/17.78	NOTE 6	44MM	12MM	500
-620	2 X 20	1.016/25.806	.950/24.13	NOTE 6	44MM	12MM	500
-625	2 X 25	1.266/32.156	1.200/30.48	NOTE 6	44MM	12MM	500
-630	2 X 30	1.516/38.506	1.450/36.83	NO	---	---	---
-635	2 X 35	1.766/44.856	1.700/43.18	NO	---	---	---
-640	2 X 40	2.016/51.206	1.950/49.53	NO	---	---	---
-645	2 X 45	2.266/57.556	2.200/55.88	NO	---	---	---
87021-650	2 X 50	2.516/63.906	2.450/62.23	NO	---	---	---

NOTES :

- ① HOUSING MATERIAL :
GLASS FILLED THERMOPLASTIC FLAME RETARDANT PER UL94V-0.
COLOR : NATURAL
- ② TERMINAL MATERIAL : BeCu
- ③ TERMINAL PLATING :
30u"/.76u MIN HARD GOLD OR GXT OVER Ni ON CONTACT ZONES.
100u"/2.54u MIN Sn OVER Ni IN SOLDERING ZONES.
OTHERWISE GOLD FLASH OR UNPLATED.
- 4 APPLICATION INFORMATION :
A. RECOMMENDED MOUNTING PAD PATTERN IS SHOWN IN FIGURE "A".
B. MATING PINS TO BE .0176/0.447 TO .0181/0.459 DIA.
C. MATING PIN TIPS TO BE IN TRUE POSITION TO MATING GRID WITHIN .008/0.20 DIA.
D. SUGGESTED MATING PIN LENGTH .130/3.30 ±.010/0.25.
- ⑤ LEAD TIPS TO BE ABOVE HEEL UP TO .007/0.18 MAX. COPLANARITY TO BE MEASURED AT LOWEST POINT (HEEL).
- ⑥ ADD "TR" TO END OF DASH NUMBER FOR TAPE AND REEL PACKAGE WITH CAP. TOOLED ONLY FOR NOTED CONNECTORS.
7. ADD "CT" TO END OF DASH NUMBER FOR CONNECTOR WITH VACUUM CAP IN TUBE.
- ⑧ ADD "LF" SUFFIX AT THE END OF PART NUMBER FOR LEAD FREE OPTION.
9. THE HOUSING WILL WITHSTAND EXPOSURE TO 260°C PEAK TEMPERATURE FOR 20 SECONDS IN A CONVECTION, INFRA-RED OR VAPOR PHASE REFLOW OVEN. SEE APPLICATION NOTE/PROCEDURES IF THEY ARE AVAILABLE.
10. THIS PRODUCT MEETS EUROPEAN UNION DIRECTIVES AND OTHER COUNTRY REGULATION AS DESCRIBED IN GS-22-008.
11. PRODUCT SPEC PER BUS-12-087.

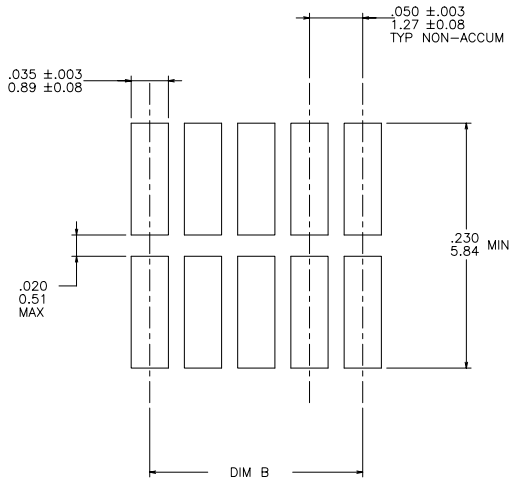
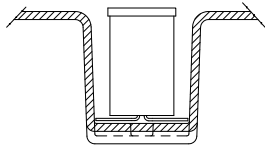
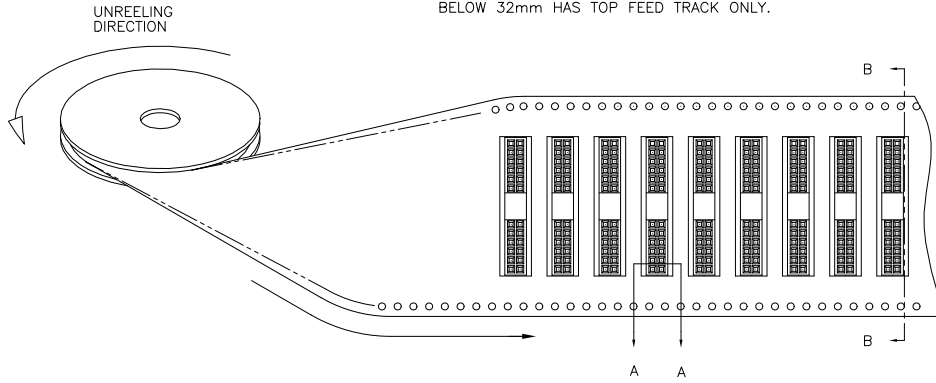


FIGURE "A"
RECOMMENDED PCB
MOUNTING PAD PATTERN

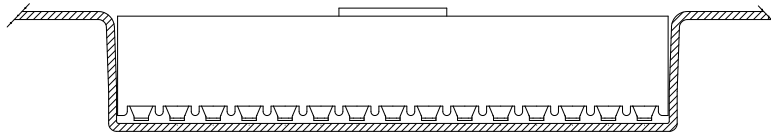
matl. code	surface	tolerance	projection	product family	
-	ISO 1302 ✓	ISO 406 ISO 1101	ISO 1101	RIBCAGE	
ltr	ecn	no	dr	date	
Y					
tolerances unless otherwise specified				title	
angles	linear	XX±.01/0.3	INCH/MM	.050/1.27 CC VERT CARD	
0°±2'		XXX±.005/0.13	scale 4:1	CONN. ASSY. SURFACE MOUNT	
		XXXX±.0020/0.051		dwg no	
dr	M. CLOUSER	6/26/91	FCI	sheet 2 of 3 size	
engr	D. WHITING	6/26/91		87021	A3
chr	C. GINGRICH	6/26/91		type	Product Customer Drawing
appd	D. WHITING	6/26/91			
sheet index	revision sheet				

REFERENCE ONLY

TAPE WIDTH'S 32mm AND ABOVE HAS BOTH FEED TRACKS,
 BELOW 32mm HAS TOP FEED TRACK ONLY.



SECTION A-A



SECTION B-B

matl. code		surface	tolerance	projection	product family
-		ISO 1302	ISO 406		RIBCAGE
tr ecn no dr date		tolerances unless otherwise specified			INCH/MM
Y		angles	linear	scale 4:1	.050/1.27 CC VERT CARD
		0°±2'	.XX±.01/0.3		CONN. ASSY. SURFACE MOUNT
			.XXX±.005/0.13		dwg no
		dr	.XXX±.0025/0.051		sheet 3 of 3 size
		engr			87021
		chr			A3
		appd			type Product Customer Drawing
sheet index	revision sheet				

4 PDS: Rev :Y STATUS: released Printed: Sep 11, 2013