

## Excellent Integrated System Limited

Stocking Distributor

Click to view price, real time Inventory, Delivery & Lifecycle Information:

[FCI](#)  
[863002A](#)

For any questions, you can email us directly:  
[sales@integrated-circuit.com](mailto:sales@integrated-circuit.com)

Copyright FCI.



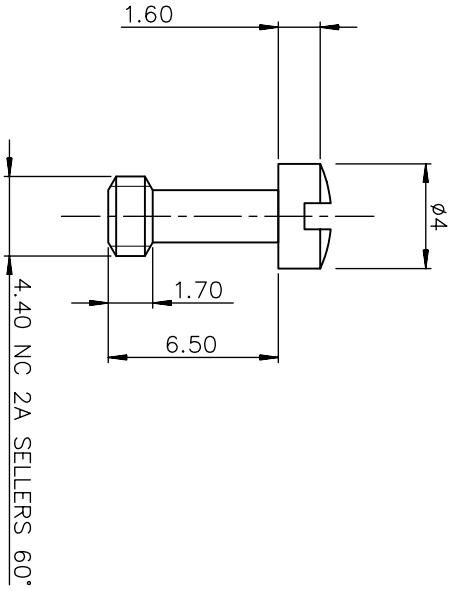
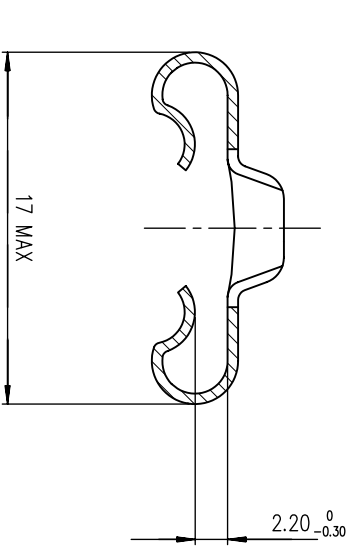
D

C

B

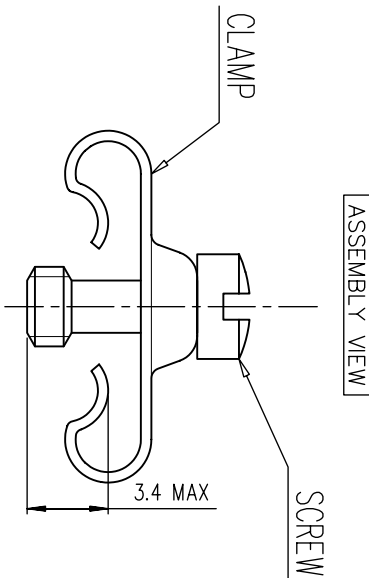
A

REV. F - 2008-04-17



**NOTES**

- Pieces assembly
- Packaging : per 100 piece
- Material : steel
- Plating : yellow chromate cadmium
- Thread : UNC 4.40



Part Number  
**863002A**

rev	ben no	dr	date
A	-	SJO	1998/03/27
B	LS06-0101	MPE	2006/06/27
C	LS07-0001	MPE	2007/01/02
D	LS09-0006	PCR	2009/01/08
E	I11-0022	AMR	2011/01/25
F	ELX-H-011663	PK	2012/05/09
G	ELX-H-011663	PK	2012/05/09

www.fciconnect.com		surface ISO 1302		tolerance std ISO 406 ISO 1101		projection		mm	
Dr	JOUBERT	1998/03/27	ANGULAR	TOLERANCES UNLESS OTHERWISE SPECIFIED		A3		Scale 5	
Eng	M.PESSON	1998/03/27	LINEAR	0.X	±0.1	A3		ECN	
Chr	ABHILASH	2011/01/25	0.XX	0.XX	±0.1	D-SUB		ELX-H-01166	
Appr	SUDHIR	2011/01/25	0.XXX	Product family		Spec ref		-	
FCI		MALE SCREW LOCK		D-SUB		CUSTOMER		sheet 1 of 1	
SHELL 50		D SUB ACCESSORIES		C01-8655-0709		CUSTOMER		sheet 1 of 1	

European View

REV. F - 2008-04-17

1

2

3

4

1

2

3

4