

## Excellent Integrated System Limited

Stocking Distributor

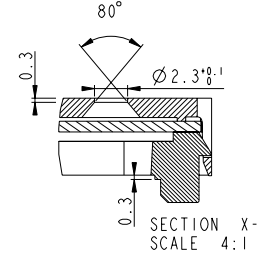
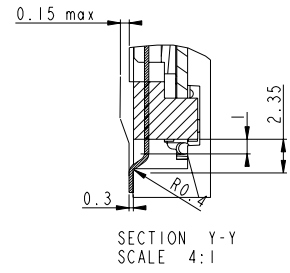
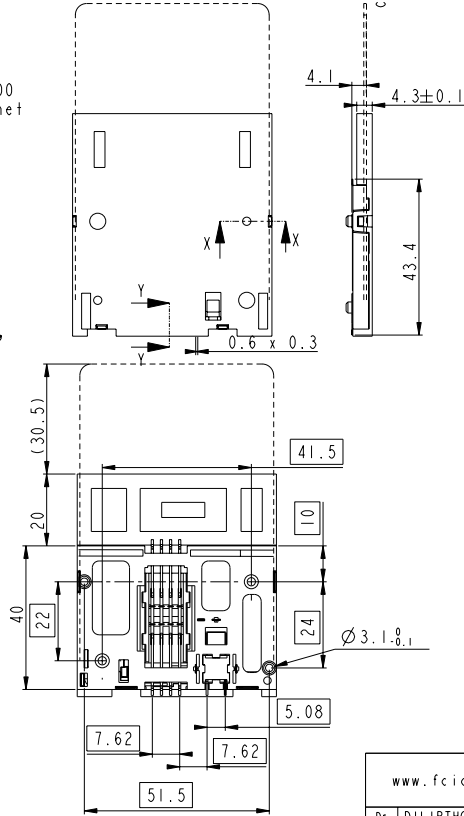
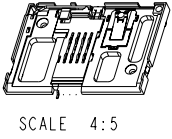
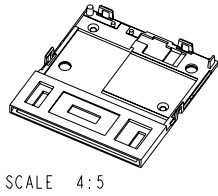
Click to view price, real time Inventory, Delivery & Lifecycle Information:

[FCI](#)  
[7312E0525S01LF](#)

For any questions, you can email us directly:  
[sales@integrated-circuit.com](mailto:sales@integrated-circuit.com)

PART NUMBER	LEAD FREE VERSION
7312E0525S01	7312E0525S01LF

PACKAGING:  
 READER: Std. Tray  
 COVER: Separately in SACHET 400x600  
 240cnrs/box, 120cnrs/sachet

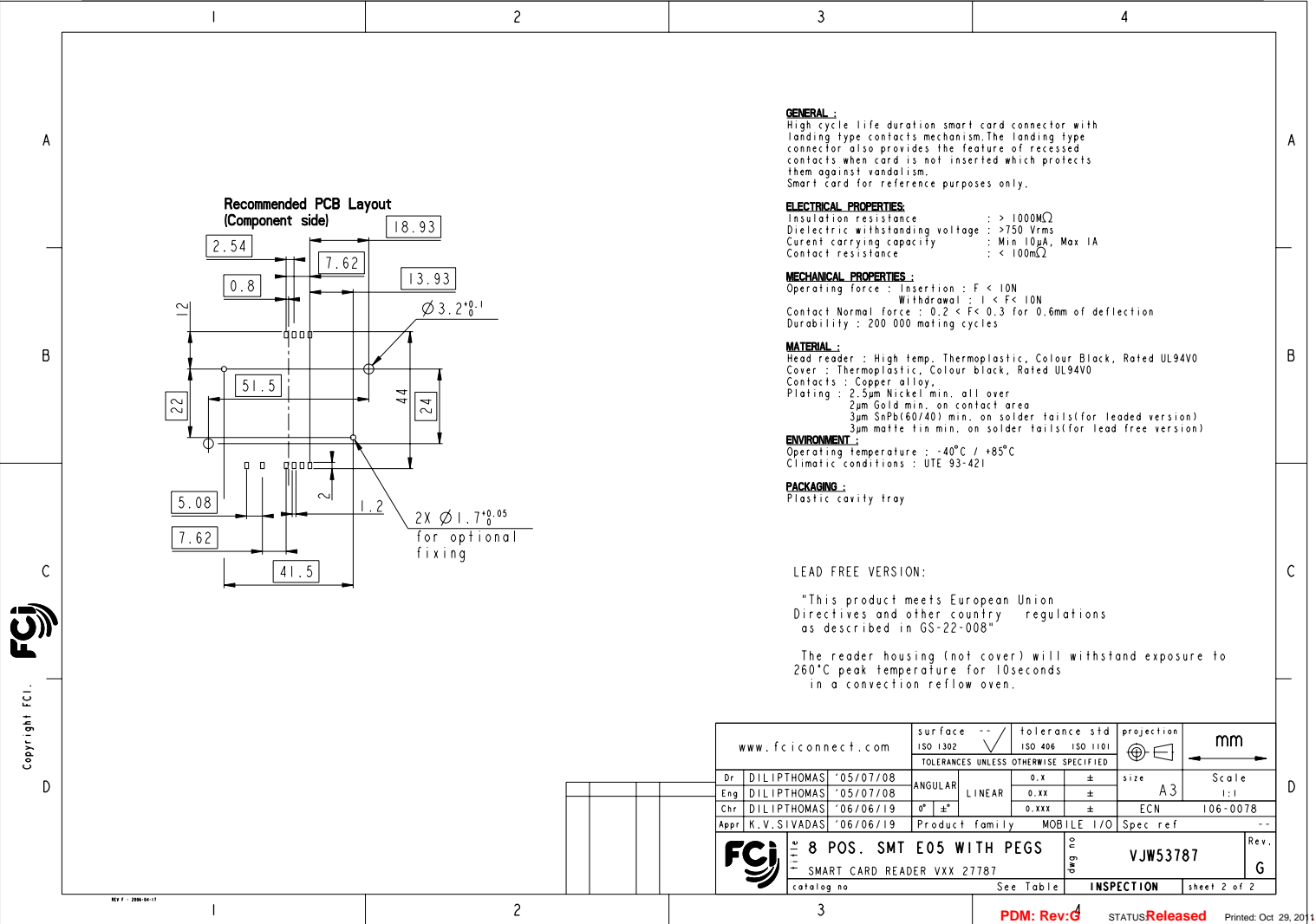


General Tolerances	
0 to 10mm:	±0.1mm
10 to 30mm:	±0.15mm
30 to 60mm:	±0.2mm
60 and more:	±0.3mm

www.fciconnect.com		surface	ISO 1302	tolerance std	ISO 406 ISO 1101	projection	mm
		TOLERANCES UNLESS OTHERWISE SPECIFIED					
Dr	DILIPTHOMAS	'05/07/08	ANGULAR	0.x	±	size	Scale 1:1
Eng	DILIPTHOMAS	'05/07/08	LINEAR	0.xx	±	A3	
Chr	DILIPTHOMAS	'06/06/19	Ø	0.xxx	±	ECN	106-0078
Appr	K.V.SIVADAS	'06/06/19	Product family		MOBILE I/O	Spec ref	--
FCI		Title		8 POS. SMT E05 WITH PEGS		dwg no	VJW53787
				SMART CARD READER VXX 27787		Rev.	G
		catalog no		See Table		INSPECTION	sheet 1 of 2

rev	ech no	dr	date
A	F20307	DLE	02/04/29
B	F20341	DLE	02/06/04
C	F20364	DLE	02/06/24
D	LS3088	JTA	03/11/28
E	105-0035	DTK	'05/03/04
F	105-0176	NT	'05/09/29
G	106-0078	DTK	'06/06/19

Copyright FCI.



**GENERAL:**  
 High cycle life duration smart card connector with landing type contacts mechanism. The landing type connector also provides the feature of recessed contacts when card is not inserted which protects them against vandalism.  
 Smart card for reference purposes only.

**ELECTRICAL PROPERTIES:**  
 Insulation resistance : > 1000MΩ  
 Dielectric withstanding voltage : > 750 Vrms  
 Current carrying capacity : Min 10μA, Max 1A  
 Contact resistance : < 100mΩ

**MECHANICAL PROPERTIES:**  
 Operating force : Insertion : F < 10N  
 Withdrawal : 1 < F < 10N  
 Contact Normal force : 0.2 < F < 0.3 for 0.6mm of deflection  
 Durability : 200 000 mating cycles

**MATERIAL:**  
 Head reader : High temp. Thermoplastic, Colour Black, Rated UL94V0  
 Cover : Thermoplastic, Colour black, Rated UL94V0  
 Contacts : Copper alloy.  
 Plating : 2.5μm Nickel min. all over  
 2μm Gold min. on contact area  
 3μm SnPb(60/40) min. on solder tails(for leaded version)  
 3μm matte tin min. on solder tails(for lead free version)

**ENVIRONMENT:**  
 Operating temperature : -40°C / +85°C  
 Climatic conditions : UTE 93-421

**PACKAGING:**  
 Plastic cavity tray

**LEAD FREE VERSION:**

"This product meets European Union Directives and other country regulations as described in GS-22-008"

The reader housing (not cover) will withstand exposure to 260°C peak temperature for 10seconds in a convection reflow oven.

www.fciconnect.com		surface -- /	tolerance std ISO 1302	ISO 406	ISO 1101	projection	mm
TOLERANCES UNLESS OTHERWISE SPECIFIED							
Dr	DILIPTHOMAS	'05/07/08	ANGULAR	LINEAR	0.x ±	size A3	Scale 1:1
Eng	DILIPTHOMAS	'05/07/08	0° ±		0.xx ±	ECN 106-0078	
Chr	DILIPTHOMAS	'06/06/19			0.xxx ±		
Appr	K.V.SIVADAS	'06/06/19	Product family		MOBILE I/O	Spec ref	--
<b>FCI</b>		8 POS. SMT E05 WITH PEGS		eng no	VJW53787		Rev. G
		SMART CARD READER VXX 27787		catalog no	See Table	INSPECTION	sheet 2 of 2

Copyright FCI.