

## Excellent Integrated System Limited

Stocking Distributor

Click to view price, real time Inventory, Delivery & Lifecycle Information:

[FCI](#)

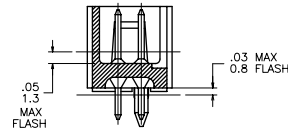
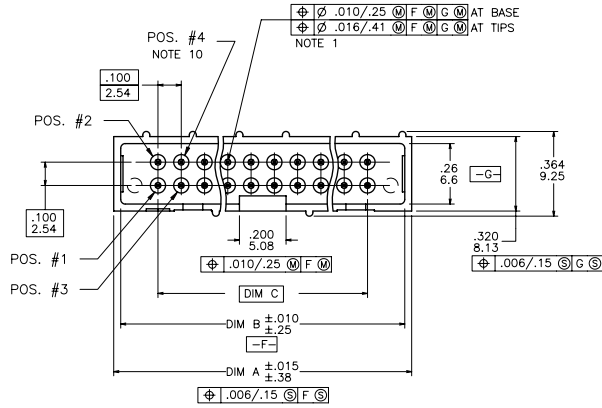
[88873-709LF](#)

For any questions, you can email us directly:

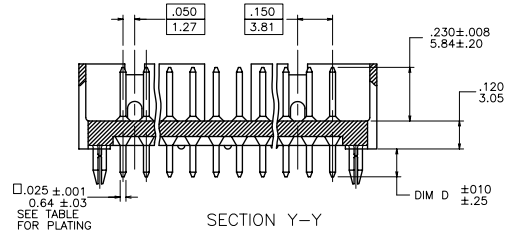
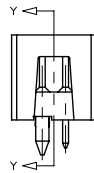
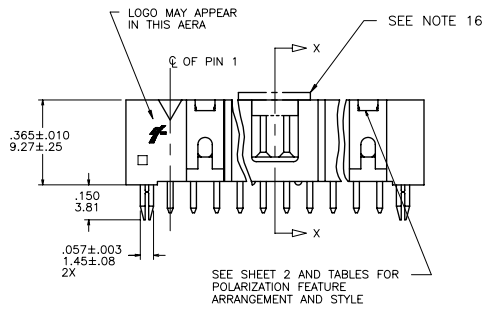
[sales@integrated-circuit.com](mailto:sales@integrated-circuit.com)

Tous droits strictement réservés. Reproduction ou communication à des tiers interdite sous quelque forme que ce soit sans autorisation écrite du propriétaire. Propriété de FCI. Droits de reproduction FCI.

All rights strictly reserved. Reproduction or issue to third parties in any form whatsoever is not permitted without written authority from the proprietor. Property of FCI. Copyright FCI.



SECTION X-X



SECTION Y-Y

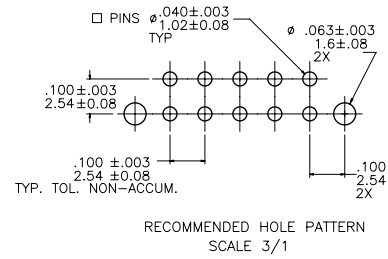
mat'l. code				tolerances unless otherwise specified				CUSTOMER COPY		FCI Electronics	
NOTE 2 & 5										www.fciconnect.com	
ltr	ecr no	dr	date	linear	.XX ±.01/X±.3			projection	title	product family	code
R	V61660	EPK	11/4/96		.XXX ±.005/XX±.13						
S	V90594	EPK	3/1/99		XXXX ±.0020/XXX±.051			INCH/MM	HEADER	-	
T	V91334	LSS	6/3/99	angles	σ ±2°						
U	V00284	DAI	1/25/00	dr	M.CLOUSER	1/10/90	scale	1:1	88873	-	
V	V00526	DAI	2/10/00	enrg	M.SMYK	7/10/90					
W	V00723	DAI	3/1/00	chr	M.SMYK	10/10/90			1 of 4		
Z	N05-0151	ZC	6/10/05	appd	M.SMYK	10/10/90					
sheet index	revision sheet	Z 1	Z 2	Z 3	Z 4						

ACAD

PDM: Rev:X

STATUS: Released 2012 Printed: Apr 12, 2011

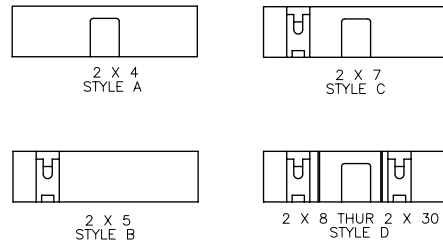
KEY FOR PLATING AND OPTIONS				TAIL LENGTH
X	TERMINAL PLATING	RETENTION NOTE 6	ORIENTATION POST NOTE 7	DIM D
-0XX(LF)	15u" / .38u GXT	NO	YES	.120/3.05
-1XX(LF)	15u" / .38u GXT	NO	NO	.120/3.05
-2XX(LF)	30u" / .76u GXT	NO	NO	.445/11.30
-3XX(LF)	15u" / .38u GXT	YES	NO	.120/3.05
-4XX(LF)	30u" / .76u GXT	NO	YES	.120/3.05
-5XX(LF)	30u" / .76u GXT	YES	NO	.120/3.05
-6XX(LF)	30u" / .76u GXT	NO	NO	.120/3.05
-7XX(LF)	30u" / .76u GXT	NO	NO	.105/2.67
-8XX(LF)	30u" / .76u GXT	NO	NO	.085/2.16
-9XX(LF)	15u" / .38u GXT DUPLX	NO	YES	.105/2.67



\* NOTE 15

NOTES:

- ① SAME PIN POSITION TOLERANCE APPLIES TO BOTH ENDS OF EACH TERMINAL.
- ② MOLDING MAT'L: GLASS-FILLED POLYESTER PCT, FLAME RETARDANT PER UL-94V-0, COLOR: BEIGE
3. 1° MAX DRAFT PERMISSIBLE ON ALL SURFACES.
4. 4 POUNDS/1.8 KILOGRAMS MIN TERMINAL PULL-OUT FORCE.
- ⑤ TERMINAL MAT'L: PHOSPHOR BRONZE.
- ⑥ 15 POUNDS / 6.8 KILOGRAMS MAX INSERTION FORCE AND .5 POUNDS/ 2.26 KILOGRAMS MIN RETENTION FORCE USING .062/1.57 THICK CIRCUIT BOARDS AND RECOMMENDED HOLE PATTERN.
- ⑦ ORIENTATION POSTS ARE UNAVAILABLE WITH RETENTION PINS. RETENTION PINS ARE UNAVAILABLE WITH ORIENTATION POSTS.
8. P/N'S WITH "T" BEHIND THEM REQUIRE TUBE PACKAGING PER BUS-14-112.
- ⑨ MAY BE ORDERED WITH G-PAX PACKAGING BY ADDING "G" TO THE DASH NUMBER PER GES-14-314.
- ⑩ POSITION #4 POLARIZED ON -206.
- ⑪ POSITION #20 POLARIZED ON -061.
- ⑫ POSITION #5 POLARIZED ON -062.
- ⑬ POSITION #25 POLARIZED ON -363.
- ⑭ POSITION #3 POLARIZED ON -366
- ⑮ SOLDER DIP PROCESS ACCEPTABLE (TIN-LEAD TAILS)
- ⑯ P/N'S WITH "V" BEHIND THEM REQUIRE PICK-UP CAPS.
- ⑰ "D" DENOTES CUSTOMER SPECIAL.
18. THE HOUSING OF XXXX-YYLF WILL WITHSTAND EXPOSURE TO 260°C PEAK TEMPERATURE FOR 10 SECONDS IN A WAVE SOLDER PROCESS.
19. 88873-\*\*\*LF IS JUST A LEAD FREE PRODUCT.



mat'l. code				tolerances unless otherwise specified				CUSTOMER COPY		FCI Electronics www.fciconnect.com	
ltr	ecr no	dr	date	linear	.XX ±.01 / X±.3	projection	title	product family		code	
z				angles	.XXX ±.005 / XX±.13 XXXX ±.0020 / XXX±.051	INCH/MM	HEADER, QUICKIE SLIMLINE, VERTICAL, 4 WALL HTP	HEADER		-	
				dr	M.CLOUSER 1/4/93	scale	88873	dwg no		sheet	
				enrg	M.SMYK 1/4/93	1:1		size		2 of	
				chr	M.SMYK 1/4/93						
				appd	M.SMYK 1/4/93						
sheet index	revision sheet							cage code			

ACAD

PDM: Rev:X

STATUS: Released 2012 Printed: Apr 12, 2011

Tous droits strictement reserves. Reproduction ou communication a des tiers interdite sans autorisation écrite du propriétaire. Propriete de c FCI. Droits de reproduction FCI.

FCI

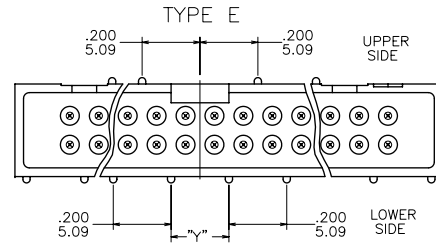
All rights strictly reserved. Reproduction or issue to third parties in any form whatever is not permitted without written authority from the proprietor. Property of FCI. Copyright FCI.

Tous droits strictement réservés. Reproduction ou communication à des tiers interdite sans autorisation écrite du propriétaire. Propriété de FCI. Droits de reproduction FCI.

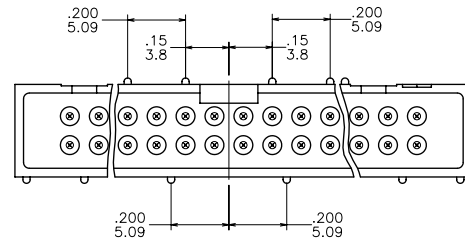
All rights strictly reserved. Reproduction or issue to third parties in any form whatsoever is not permitted without written authority from the proprietor. Property of FCI. Copyright FCI.

SIZE	TYPE	DIM "Y" REF	NO. OF POS. AT UPPER SIDE	NO. OF POS. AT LOWER SIDE
2 X 2	G	.300/7.64	0	2
2 X 3	G	.100/2.54	0	4
2 X 4	G	.200/5.09	0	4
2 X 5	G	.300/7.64	0	4
2 X 6	G	.200/5.09	0	4
2 X 7	G	.100/2.54	0	6
2 X 8	G	.200/5.09	0	6
2 X 10	F	-	2	7
2 X 12	E	.200/5.09	2	8
2 X 13	E	.300/7.64	3	8
2 X 15	E	.100/2.54	4	10
2 X 17	E	.300/7.64	5	10
2 X 18	F	-	6	11
2 X 20	E	.200/5.09	7	12
2 X 22	F	-	8	13
2 X 25	E	.300/7.64	9	14
2 X 30	F	-	12	17

2X10 THROUGH 2X30

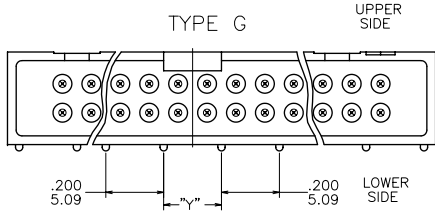


TYPE F



2X2 THROUGH 2X8

TYPE G



mat'l. code				tolerances unless otherwise specified				CUSTOMER COPY		 Electronics www.fciconnect.com	
ltr	ecn no	dr	date	linear	.XX ±.01/XX±.13	projection			title		
z					.XXX ±.005/XX±.13				HEADER, QUICKIE SLIMLINE, VERTICAL, 4 WALL HTP		
				angles	.XXX ±.0020/XXX±.051	INCH/MM			product family	HEADER	code
				dr	σ ±2°	scale	1:1		size	dwg no	sheet
				enrg	M.CLOUSER 1/4/93				A	88873	3 of
				chr	M.SMYK 1/4/93						
				appd	M.SMYK 1/4/93						
sheet index	revision sheet										

PDM: Rev:X

STATUS: Released 20126 Printed: Apr 12, 2011

ACAD

Tous droits strictement réservés. Reproduction ou communication à des tiers interdite sous quelque forme que ce soit sans autorisation écrite du propriétaire. Propriété de FCI. Droits de reproduction FCI.

All rights strictly reserved. Reproduction or issue to third parties in any form whatsoever is not permitted without written authority from the proprietor. Property of FCI. Copyright FCI.

PRODUCT NUMBER	DIM A	DIM B	DIM C	STYLE	SIZE
88873-X04 (LF)	.480/12.19	.420/10.67	.100/2.54	A	2 X 2
-X06 (LF)	.580/14.73	.520/13.21	.200/5.08	A	2 X 3
-X06D (LF)	.580/14.73	.520/13.21	.200/5.08	A	2 X 3
-X08 (LF)	.680/17.27	.620/15.75	.300/7.62	A	2 X 4
-X08D (LF)	.680/17.27	.620/15.75	.300/7.62	A	2 X 4
-X09 (LF)	.780/19.81	.720/18.29	.400/10.16	A	2 X 5
-X10 (LF)	.780/19.81	.720/18.29	.400/10.16	B	2 X 5
-X12 (LF)	.880/22.35	.820/20.83	.500/12.70	A	2 X 6
-X14 (LF)	.980/24.90	.920/23.37	.600/15.24	C	2 X 7
-X16 (LF)	1.080/27.90	1.020/25.91	.700/17.78	D	2 X 8
-X20 (LF)	1.280/32.51	1.220/30.99	.900/22.86		2 X 10
-X24 (LF)	1.480/37.59	1.420/36.07	1.100/27.94		2 X 12
-X26 (LF)	1.580/40.13	1.520/38.61	1.200/30.48		2 X 13
-X30 (LF)	1.780/45.21	1.720/43.69	1.400/35.56		2 X 15
-X34 (LF)	1.980/50.29	1.920/48.77	1.600/40.64		2 X 17
-X36 (LF)	2.080/52.83	2.020/51.31	1.700/43.18		2 X 18
-X40 (LF)	2.280/57.91	2.220/56.39	1.900/48.26		2 X 20
-X44 (LF)	2.480/62.99	2.420/61.47	2.100/53.34		2 X 22
-X50 (LF)	2.780/70.61	2.720/69.09	2.400/60.96		2 X 25
-X60 (LF)	3.280/83.31	3.220/81.79	2.900/73.66		2 X 30
-061 (LF)	2.280/57.91	2.220/56.39	1.900/48.26		2 X 20
-062 (LF)	1.980/50.29	1.920/48.77	1.600/40.64	D	2 X 17
-206 (LF)	.580/14.73	.520/13.21	.200/5.08	A	2 X 3
-207 (LF)	.580/14.73	.520/13.21	.200/5.08	A	2 X 3
-363 (LF)	2.780/70.61	2.720/69.09	2.400/60.96	D	2 X 25
-366 (LF)	1.980/50.29	1.920/48.77	1.600/40.64		2 X 17
-934 (LF)	1.980/50.29	1.920/48.77	1.600/40.64		2 X 17
88873-950 (LF)	2.780/70.61	2.720/69.09	2.400/60.96	D	2 X 25

NOTE 17  
NOTE 9  
NOTE 17  
NOTE 9  
NOTE 9  
NOTE 9  
NOTE 9  
NOTE 11  
NOTE 12  
NOTE 10  
NOTE 13  
NOTE 14

mat'l. code				tolerances unless otherwise specified				CUSTOMER COPY		FCI Electronics www.fciconnect.com	
ltr	ecn no	dr	date	linear	.XX ±.01/XX±.3	projection	title		product family		
z				angles	.XXX ±.005/XX±.13 XXXX ±.0020/XXX±.051 σ ±2°	INCH/MM	HEADER, QUICKIE SLIMLINE, VERTICAL, 4 WALL HTP		HEADER		
				dr	M.CLOUSER 1/4/93	scale	size		code		
				enrg	M.SMYK 1/4/93	1:1	88873		sheet		
				chr	M.SMYK 1/4/93				4 of		
				appd	M.SMYK 1/4/93						
sheet index	revision sheet										