

Excellent Integrated System Limited

Stocking Distributor

Click to view price, real time Inventory, Delivery & Lifecycle Information:

[FCI](#)

[88914-011LF](#)

For any questions, you can email us directly:

sales@integrated-circuit.com

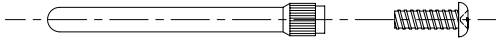
PRODUCT NO
88914-0XY

NOTE 5

PRODUCT NUMBER	BACKPLANE THICKNESS
	MM/IN.
88914-011	2.31-3.10/0.091-0.122
88914-012	3.10-3.89/0.122-0.153
88914-013	3.89-4.67/0.153/0.184
88914-014	4.67-5.46/0.184-0.215
88914-015	5.46-6.25/0.215-0.246
88914-016	6.25-7.06/0.246-0.278
88914-017	7.06-8.00/0.278-0.315
88914-018	8.00-11.00/0.315-0.433

NOTES:

- ① PIN MATERIAL:
P/N 88918-002, STAINLESS STEEL
SCREW INFORMATION:
#1-72 PHILLIPS PAN HEAD STAINLESS STEEL
2. EACH KIT INCLUDES ONE PIN AND ONE SCREW
3. SEE PAGE 2 FOR AN APPLICATION EXAMPLE
- ④ ADD "Lf" SUFFIX AT THE END OF PART NUMBER FOR LEAD FREE OPTION
5. THIS PRODUCT MEETS EUROPEAN UNION DIRECTIVES AND OTHER COUNTRY REGULATION AS DESCRIBED IN GS-22-008.



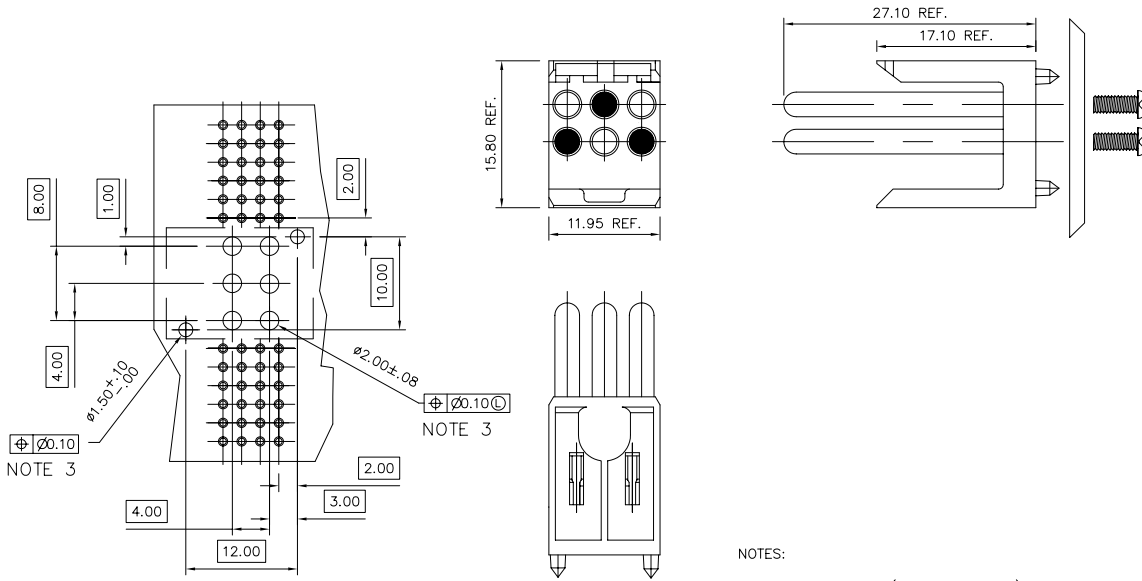
mat'l. code		surface ISO 1302	tolerance ISO 406 ISO 1101	projection	product family METRAL (tm)
ltr	ecn no/dr	date	tolerances unless otherwise specified	MM	title KEYING PIN KIT
B	V51387 SAR	1/10/96	angles linear .0±.3	scale 1:1	dwg no 88914
C	V71522 MDF	10/27/97	linear .00±.13		
D	V81338 MDF	7/22/98	0°±2' .000±.0051	FCJ	type Product Customer Drawing
E	V91495 MDF	7/14/99	dr STU STONER 02/04/93		
F	V02390 JRW	10/4/00	enrg R.DOUTRICH 02/04/93		
G	M06-0191MHT	5/22/06	chr STU STONER 02/04/93		
sheet index		revision sheet	G G		
		1 2			

PDM: Rev:G

STATUS: Released

Printed: Jul 28, 2010

APPLICATION EXAMPLE



RECOMMENDED HOLE PATTERN
 COMPONENT SIDE SHOWN
 (2MM SIGNAL HOLE PATTERN)
 (SHOWN FOR REFERENCE ONLY)

NOTES:

1. HEADER HOUSING (P.N. 88913-101) SHOWN FOR CLARITY AND DOES NOT COME WITH KEYING PIN KITS.
2. KEYING COMBINATION SHOWN WILL MATE TO RECEPTACLE 88916-X06. LOADED PIN POSITIONS ARE SHOWN SHADED.
- ③ INDICATED HOLES ARE UNPLATED

mat'l. code		surface	tolerance	projection	product family
ISO 1302		ISO 406	ISO 1101		METRAL (tm)
ltr	ecr	no	ldr	date	title
G					KEYING PIN KIT
angles		linear	.0±.3	MM	
0°±2'			.00±.13		
			.00±.0051	scale 1:1	
dr	STU	STONER	02/04/93		dwg no
enrg	R.DOUTRICH	02/04/93	88914		sheet 2 of 2
chr	STU	STONER	02/04/93		A3
appd	STU	STONER	02/04/93		type Product Customer Drawing
sheet index	revision sheet				