

## Excellent Integrated System Limited

Stocking Distributor

Click to view price, real time Inventory, Delivery & Lifecycle Information:

[FCI](#)  
[71245-00CA](#)

For any questions, you can email us directly:

[sales@integrated-circuit.com](mailto:sales@integrated-circuit.com)

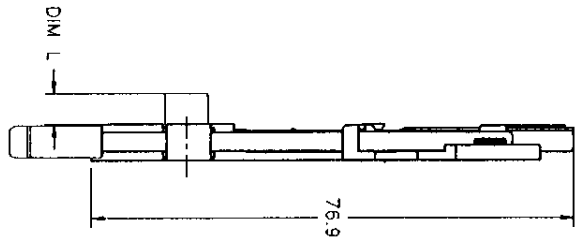


Distributor of FCI: Excellent Integrated System Limited  
 Datasheet of 71245-00CA - CONN PCMCIA CARD PUSH-PUSH

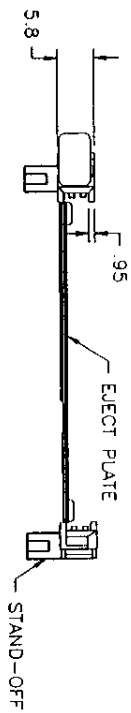
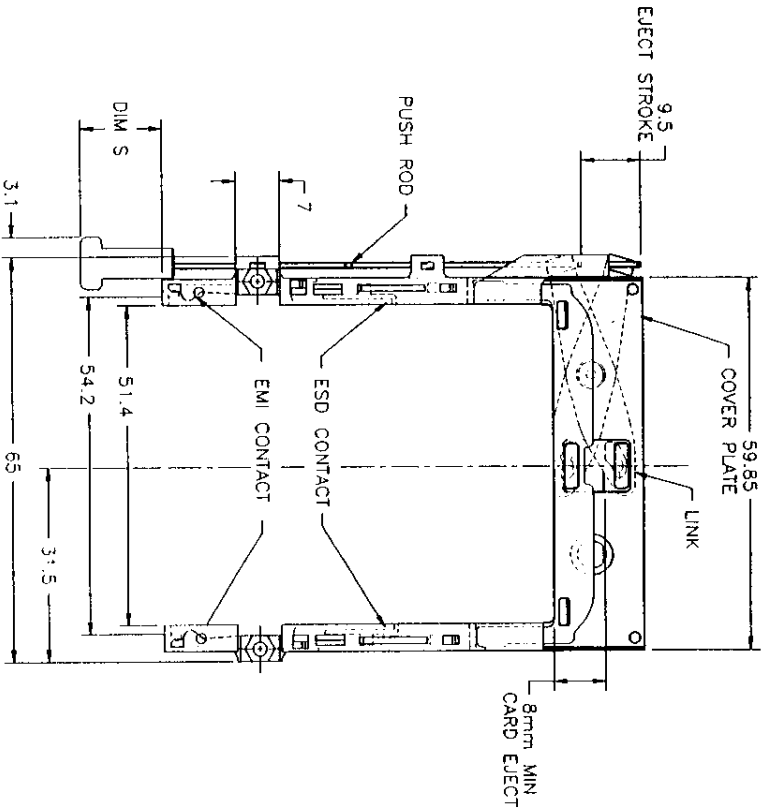
Copyright © BERG ELECTRONICS INC. All rights reserved.

Proprietary de CYBERG ELECTRONICS. Droits de reproduction BERG ELECTRONICS INC.

PRODUCT NO.	DIM L	DIM S
71245-10CA	0	
71245-12CA	2.2	15
71245-14CA	4.3	
71245-15CA	5	



- NOTES:
- EJECT PLATE TO MOVE ALONG INSIDE WALL OF COVER PLATE SMOOTHLY AFTER ASSEMBLING WITH HEADER.
  - MATERIAL: POLYPHTHARAMIDE UL94V-0  
 PLASTIC GUIDES: BLACK  
 COVER PLATE: STAINLESS STEEL  
 EMI CONTACT: PHOSPHOR BRONZE
  - FINISH:  
 EMI CONTACT: CONTACT AREA: 0.5um Au  
 UNDER PLATING: 2.0um Ni
  - SEE TA-946 FOR RECOMMENDED PCB LAYOUT.



mat'l. code	ecm no	dr	date	tolerances unless otherwise specified	CUSTOMER COPY	projection	title	product family	code
A	V51405	RHG	11/9/95	.X ± .3			NARROW BODY FRONT EJECT TYPE 123 MECHANISM ASSEMBLY	MCS	
B	V60178	RHG	2/5/96	.XX ± .13 XXX ± .051 O ± Z					
sheet	revision	B	B						
index	sheet	1	2						

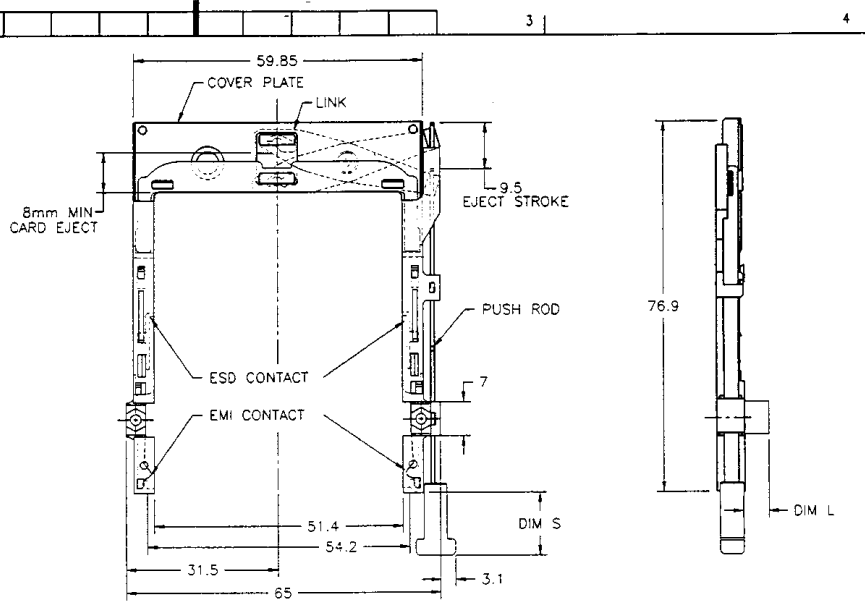
form no. 7550-001-103

1 2

3

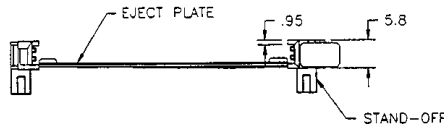
4

PRODUCT NO.	DIM L	DIM S
71245-00CA	0	13
71245-02CA	2.2	
71245-04CA	4.3	
71245-05CA	5	



**NOTES:**

- EJECT PLATE TO MOVE ALONG INSIDE WALL OF COVER PLATE SMOOTHLY AFTER ASSEMBLING WITH HEADER.
- MATERIAL:  
 PLASTIC GUIDES: POLYPHTHARAMIDE UL94V-0  
 COLOR: BLACK  
 COVER PLATE: STAINLESS STEEL  
 EMI CONTACT: PHOSPHOR BRONZE
- FINISH:  
 EMI CONTACT: CONTACT AREA: 0.5um Au  
 UNDER PLATING: 2.0um Ni
- SEE TA-946 FOR RECOMMENDED PCB LAYOUT.



mat'l. code				tolerances unless otherwise specified		CUSTOMER COPY		<b>BERG ELECTRONICS</b>	
itr	ecr no	dr	date	linear	.X ± .3	projection	title	NARROW BODY FRONT	code
B					.XX ± .13	mm	EJECT TYPE 123		
				angles	.XXX ± .051	mm	MECHANISM ASSEMBLY		
				dr	0° ± 2'	mm	product family	MCS	sheet
				enrg		1:1	size	A4	2 of 2
				chr			dwg no	71245	
				apod			scale		
sheet	revision								
index	sheet								
								cage code	
								22526	