

Excellent Integrated System Limited

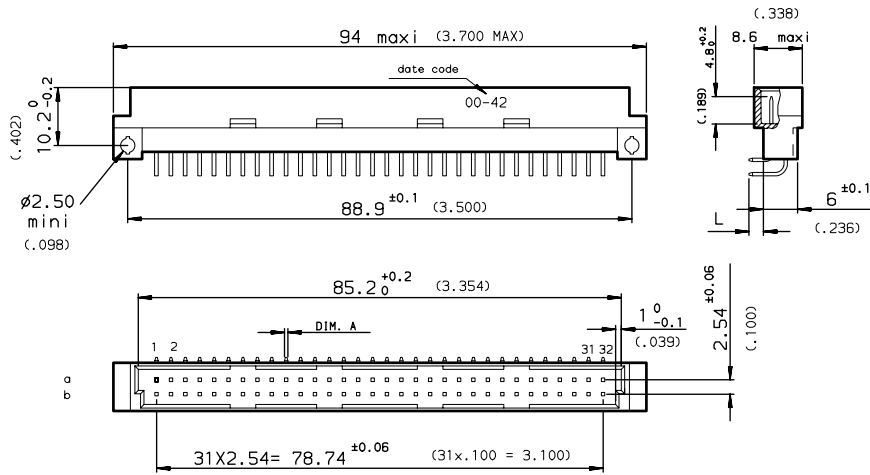
Stocking Distributor

Click to view price, real time Inventory, Delivery & Lifecycle Information:

[FCI](#)
[86091325113755ANLF](#)

For any questions, you can email us directly:
sales@integrated-circuit.com

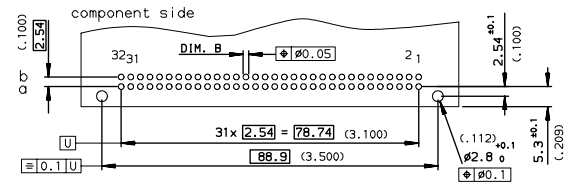
DIMENSIONS mm (inches)



SPECIFICATION 251 = specific marking : only date code
or SPECIFICATION AN=

PART NUMBER	8609	51	7	5
PIN OUT				
row a	1	32		
rows a-b	2	64		
NUMBER OF CONTACTS				
TERMINATION	L = 2.75 ±0.15 (.108)	A = ∅0.6 ⁰ _{-0.08}	B = ∅0.8 ⁰ _{-0.3}	13
PERFORMANCE CLASS	DIN 41612 class 3			4
	DIN 41612 class 2			
	DIN 41612 class 1			
TERMINATION TYPE	TIN LEAD			251E1
	LEAD FREE			ANLF

PCB DRILLING



GENERAL CHARACTERISTICS AND ROHS INFORMATIONS:
SEE DRAWING C-8609-0000A

European Views

www.fciconnect.com		surface	tolerance std	projection	mm
		ISO 1302	ISO 406 ISO 1101		
		TOLERANCES UNLESS OTHERWISE SPECIFIED			
Dr	ROUILLARD	2000/11/20	ANGULAR	size	Scale
Eng	TARON	2000/11/20	LINEAR	0.X	±0.1
Chr	LEGARE	2000/11/20	0.XX	±0.1	ECN
Appr	LEGARE	2000/11/20	0.XXX	±0.1	LS06-0095
		Product family	DIN 8609	Spec ref	-
	RIGHT ANGLE MALE - STYLE B	2	2	C-8609-0848	Rev. C
	SOLDER TO BOARD			CUSTOMER	sheet 1 of 1

rev	ecn no	dr	date
A	-	-	2000/11/20
B	LS05-001	JTA	2005/03/03
C	LS06-0095	L60	2006/06/26
-	-	-	-
-	-	-	-
-	-	-	-

REV F - 2008-04-17

1

2

PDM: Rev:C

STATUS: **Released**

Printed: May 14, 2011