



**Distributor of FCI: Excellent Integrated System Limited**

Datasheet of 72313-7013BLF - Connector Receptacle USB TypeA 4 Position Through Hole, Right Angle, Horizontal

Contact us: [sales@integrated-circuit.com](mailto:sales@integrated-circuit.com) Website: [www.integrated-circuit.com](http://www.integrated-circuit.com)

---

## **Excellent Integrated System Limited**

Stocking Distributor

Click to view price, real time Inventory, Delivery & Lifecycle Information:

[FCI](#)

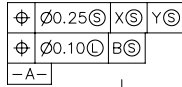
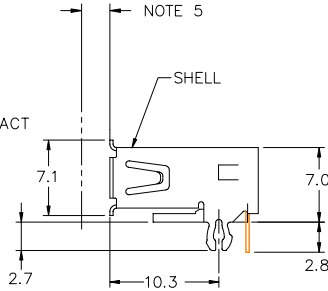
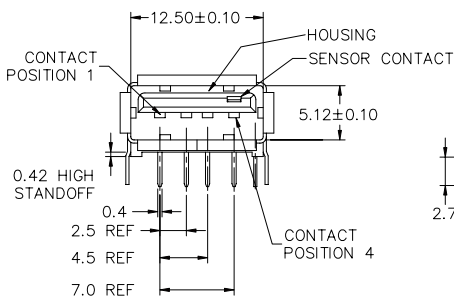
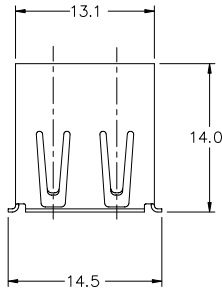
[72313-7013BLF](#)

For any questions, you can email us directly:

[sales@integrated-circuit.com](mailto:sales@integrated-circuit.com)

Contact us: sales@integrated-circuit.com Website: www.integrated-circuit.com

PRODUCT NO.  
SEE PRODUCT NUMBER CODE



P.C. BOARD LAYOUT

NOTES:

- MATERIAL:  
CONTACTS: COPPER ALLOY  
SHELL: COPPER ALLOY  
HOUSING: UL 94V-0 RATED THERMOPLASTIC
- PLATING:  
CONTACTS: 0.76µm MINIMUM GOLD FLASH OVER PALLADIUM NICKEL IN CONTACT AREA. 2.54µm MINIMUM TIN-LEAD OR TIN ON SOLDER TAILS ALL OVER 1.27µm NICKEL UNDERPLATE  
SHELL: 2.5µm BRIGHT TIN OVER NICKEL UNDERPLATE  
SEE PRODUCT NUMBER CODE
- DATUM AND BASIC DIMENSIONS ESTABLISHED BY CUSTOMER
- RECOMMENDED PC BOARD THICKNESS OF 1.57mm
- 2.67mm MAXIMUM PANEL THICKNESS IF MOUNTED BEHIND PANEL  
(TO BE CONTINUED)

mat'l. code				tolerances unless otherwise specified				CUSTOMER COPY		ELECTRONICS FCI	
NOTE 1 & 2										title	
ltr	ecm no	dr	date	.X ±.25				projection		UNIV. SERIAL BUS SENSOR RECEPTACLE	
P	N04-0033	PH	07/30/04	.XX				mm		product family USB	
R	N04-0066	PH	10/13/04	.XXX				scale		code -	
				0° ±2°				2:1		size dwg no	
K	T80531	P P	12/02/98	FUSSELMAN 5/7/96				A4		72313	
L	T20093	WL	04/01/02	J. DAVID 5/7/96						sheet 1 of 2	
M	T04-0069	WL	02/18/04	MACMULLIN 12/18/96							
N	T04-0283	WL	07/01/04	MACMULLIN 12/18/96							
sheet index	revision	Q	Q								
	sheet	1	2								

Tous droits strictement reserves. Reproduction ou communication a des tiers interdite sous quelque forme que ce soit sans autorisation écrite du propriétaire. Propriete de ©BERG ELECTRONICS. Copyright BERG ELECTRONICS INC.

All rights strictly reserved. Reproduction or issue to third parties in any form whatever is not permitted without written authority from the proprietor. Property of ©BERG ELECTRONICS. Copyright BERG ELECTRONICS INC.

Contact us: [sales@integrated-circuit.com](mailto:sales@integrated-circuit.com) Website: [www.integrated-circuit.com](http://www.integrated-circuit.com)

**PRODUCT NUMBER CODE**

72313 - X X X X X P LF

BASE PRODUCT NUMBER

HOUSING COLOR AND SHELL PLATING OPTIONS  
 0 - WHITE+SHELL TIN/LEAD & NICKEL PLATING  
 1 - BLACK+SHELL TIN/LEAD & NICKEL PLATING  
 2 - WHITE+SHELL NICKEL PLATING ONLY  
 3 - BLACK+SHELL NICKEL PLATING ONLY  
 4 - BLACK(NYLON 66)+NICKEL PLATING ONLY  
 5 - BLACK(HIGH TEMPERATURE RESIN)+NICKEL PLATING ONLY  
 6 - WHITE(HIGH TEMPERATURE RESIN)+BRIGHT TIN & NICKEL PLATING  
 7 - BLACK(HIGH TEMPERATURE RESIN)+BRIGHT TIN & NICKEL PLATING  
 8 - WHITE(HIGH TEMPERATURE RESIN)+NICKEL PLATING ONLY

SHELL OPTION  
 0 - NO BACK SHIELD

MOUNTING HOLE OPTIONS  
 1 - NONE

TERMINAL PLATING OPTION  
 0 - WHEN NO "LF" MARK. 50u" Ni UNDERPLATE  
 30u" GXT CONTACT AREA  
 100u" TIN/LEAD TAIL AREA  
 2 - WHEN NO "LF" MARK. 1.27µm Ni UNDERPLATE  
 0.76µm/30µ" GOLD CONTACT AREA  
 2.54µm TIN/LEAD TAIL AREA  
 3 - WHEN WITH "LF" MARK. 50u" Ni UNDERPLATE  
 30u" GXT CONTACT AREA  
 100u" TIN TAIL AREA

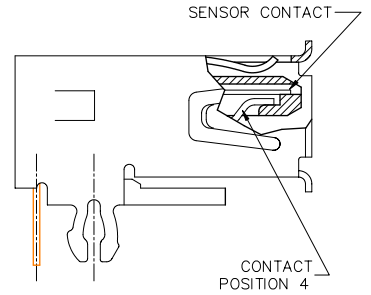
PACKAGING OPTIONS  
 B - TUBES  
 R - TAPE & REEL

DATE CODE

LEAD FREE MARK  
 WHEN TERMINAL PLATING OPTION IS 3  
 AND HOUSING AND SHELL PLATING OPTION IS 5, 6, 7 OR 8

(CONTINUED)

- 6. If lead free p/n, a lead free label will appear at packing
- 7. If lead free p/n, the housing will withstand exposure to 260° peak temperature for 40 seconds in a convection, infra-red or vapor phase reflow oven
- 8. If lead free p/n, the product meets the requirements of the European Union Directive of Restrictions for Hazardous Substances (Directive 2002/95/EC) and can be processed in the process conditions for which the product is developed. FCI, its subsidiaries and affiliates ("FCI") provides the above data and information in good faith based upon current knowledge and experience, but makes no warranty that such data or information is free from error, is complete or is sufficient for user's intended purpose EVEN IF MADE KNOWN TO FCI. FCI specifically disclaims any warranty, express or implied, and assumes no liability with respect to the effectiveness or safety of the products listed above. Each user must make its own determination as to the suitability of FCI's products and materials for its own particular purposes, and must assure that its products fabricated from FCI's products and materials are safe and lawful. It is the user's responsibility to assure proper use and disposal of FCI's products and materials, the safety and health of user's employees and customers, and user's compliance with applicable laws and regulations



mat'l. code		tolerances unless otherwise specified		CUSTOMER COPY		<b>BERG ELECTRONICS</b>	
ltr	ecn no	dr	date	linear	.X ±.25	projection	title
R					.XX		UNIV. SERIAL BUS
				angles	.XXX		SENSOR RECEPTACLE
				dr	0° ±2°		product family
				enrg	FUSSELMAN 5/7/96	mm	USB
				chr	J.DAVID 5/7/96	scale	size
				appd	MACMULLIN 12/18/96	2:1	dwg no
					MACMULLIN 12/18/96		72313
sheet index	revision sheet						code
							2 of

All rights strictly reserved. Reproduction or issue to third parties in any form  
 whatsoever is not permitted without written authority from the proprietor.  
 Property of ©BERG ELECTRONICS Copyright BERG ELECTRONICS INC.

Tous droits strictement réservés. Reproduction ou communication à des tiers interdite  
 sous quelque forme que ce soit sans autorisation écrite du propriétaire.  
 Propriété de ©BERG ELECTRONICS. Droits de reproduction BERG ELECTRONICS INC.