

Excellent Integrated System Limited

Stocking Distributor

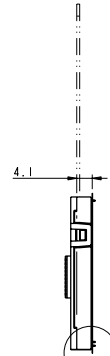
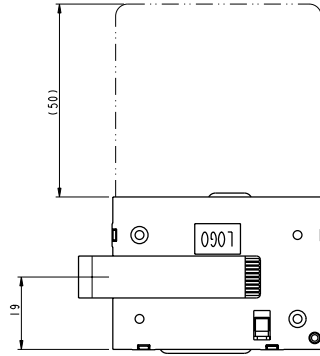
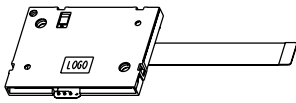
Click to view price, real time Inventory, Delivery & Lifecycle Information:

[FCI](#)
[7361E0225S16LF](#)

For any questions, you can email us directly:

sales@integrated-circuit.com

PART NUMBER	LEAD FREE VERSION
7361E0225S16	7361E0225S16LF



GENERAL:
High cycle life duration smart card connector with landing type contacts mechanism. The landing type connector also provides the feature of recessed contacts when card is not inserted which protects them against vandalism.
Smart card for reference purposes only.

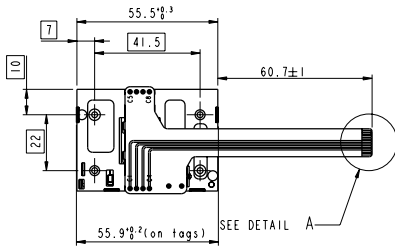
ELECTRICAL PROPERTIES:
Insulation resistance : > 1000MΩ
Dielectric withstanding voltage : > 750 Vrms
Current carrying capacity : Min 10mA, Max 1A
Contact resistance : < 100mΩ

MECHANICAL PROPERTIES:
Operating force : Insertion : F < 10N
Withdrawal : 1 < F < 10N
Contact Normal force : 0.2 < Fc < 0.3 for 0.6mm of deflection
Durability : 200 000 mating cycles

MATERIAL:
Head reader : High temp. Thermoplastic, Colour Black, Rated UL94V0
Cover : High temp. Thermoplastic, Colour Grey, Rated UL94V0
Contacts : Copper alloy.
Plating : 2.5µm Nickel min. all over
2µm Gold min. on contact area
3µm SnPb(60/40) min. on solder tails(for leaded version)
3µm matte tin min. on solder tails(for lead free version)

ENVIRONMENT:
Operating temperature : -40°C / +90°C
Climatic conditions : UTE 93-421

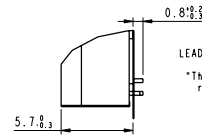
PACKAGING:
Plastic cavity tray



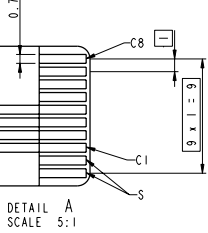
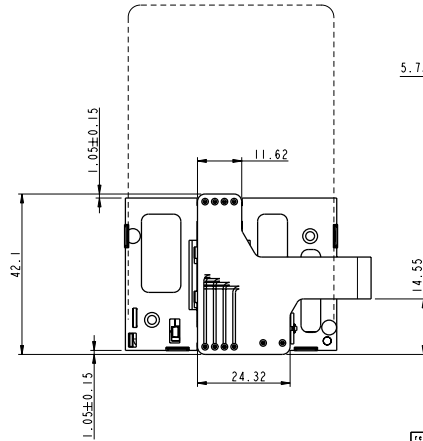
SEE DETAIL A

LEAD FREE VERSION:

This product meets European Union Directives and other country regulations as described in GS-22-008



DETAIL B
SCALE 5:1



DETAIL A
SCALE 5:1

www.fciconnect.com		surface 150 192	tolerance std 150 406 150 1101	projection	mm
		TOLERANCES UNLESS OTHERWISE SPECIFIED			
ref	ech no	df	date	Dr	TARON 02/12/10
Eng	TARON	02/12/10	ANGULAR	LINEAR	0.1 ±
A	L33831	JTA	03/03/26	Chr	DILIPHOMAS 06/06/19
B	L33817	MFE	03/09/17	Apr	R.V.SIVADAS 06/06/19
General Tolerances		C	L33888	MFE	03/10/16
0 to 10mm:	±0.1mm	D	158-0551	STK	04/03/13
10 to 30mm:	±0.15mm	E	195-0181	NT	05/10/04
30 to 60mm:	±0.2mm	F	104-0078	DTK	06/04/19
60 and more:	±0.3mm				

Dr	TARON	02/12/10	ANGULAR	LINEAR	0.1 ±	size	A2	Scale	3:2
Chr	DILIPHOMAS	06/06/19	0°	0°	0.1 ±	ECN	106-0078		
Apr	R.V.SIVADAS	06/06/19	Product family	MOBILE I/O	Spec ref				
www.fciconnect.com		E02-SIDE-FLEX		10020343		Rev.		F	
		SMART CARD READER VXX 27790							
		catalog no		See Table		CUSTOMER		sheet 1 of 1	