

Excellent Integrated System Limited

Stocking Distributor

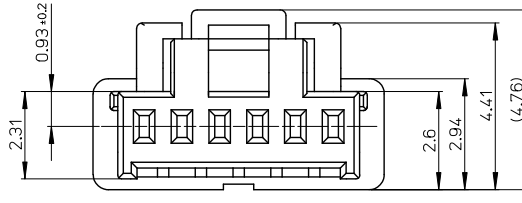
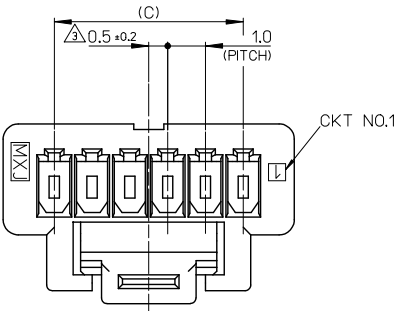
Click to view price, real time Inventory, Delivery & Lifecycle Information:

[Molex Connector Corporation](#)
[5013300600](#)

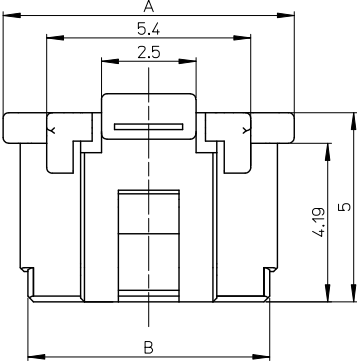
For any questions, you can email us directly:

sales@integrated-circuit.com

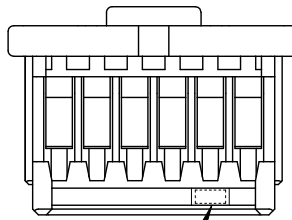
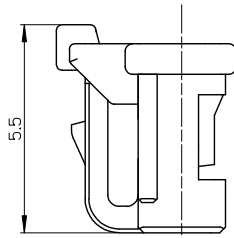
10 9 8 7 6 5 4 3 2 1



VIEW "D"



VIEW D



CAV NO.

NOTES.

1. 適合ターミナル: 501334-****
APPLICABLE TERMINAL: 501334-****
2. 嵌合相手: 501331-****
MATE WITH: 501331-****
- △ 偶数極に適用
APPLY FOR EVEN CIRCUIT SIZE
4. 2~5極は、SD-501330-001を参照下さい。
REFER TO SD-501330-001 ABOUT 2-5CKT.
5. ELV 及び RoHS適合品
ELV AND RoHS COMPLIANT.
6. 材質
MATERIAL
66ナイロン 66NYLON
ガラス無充填 GLASS FILLED 0%
UL94V-0

※対応可能な極数は、別途お問い合わせ下さい。

14.0	15.4	16.7	501330-15**	15	501330-**0* 501330-**3*
13.0	14.4	15.7	501330-14**	14	
12.0	13.4	14.7	501330-13**	13	
11.0	12.4	13.7	501330-12**	12	
10.0	11.4	12.7	501330-11**	11	
9.0	10.4	11.7	501330-10**	10	
8.0	9.4	10.7	501330-09**	9	
7.0	8.4	9.7	501330-08**	8	
6.0	7.4	8.7	501330-07**	7	
5.0	6.4	7.7	501330-06**	6	
C	B	A	MATERIAL NO.	CKT.	MODEL NO.

REVISED EC NO: J2016-0342 DRAWN: MATSUYAMA 2015/10/02 CHKD: KASAKAWA 2015/10/02 APPR: NUKITA 2015/10/02	GENERAL TOLERANCES (UNLESS SPECIFIED)		DIMENSION STYLE		SCALE	DESIGN UNITS	THIRD ANGLE PROJECTION	
	0.25 UNDER ± 0.03		MM ONLY		10:1	METRIC		
	0.25 OVER	0.5 UNDER ± 0.05	DRAWN BY DATE		TITLE			
	0.5 OVER	1.0 UNDER ± 0.1	NYOSHIDA 2004/07/30		1.0 WIRE TO BOARD CONN. 1-ROW RECEPTACLE HOUSING 6-15CKT.			
	1.0 OVER	10 UNDER ± 0.2	CHECKED BY DATE		molex			
	10 OVER	30 UNDER ± 0.25	MYAGI 2004/07/30		DOCUMENT NO. SD-501330-002			
30 OVER	± 0.3	APPROVED BY DATE		SHEET NO. 1 OF 2				
ANGULAR ± 3 °		NUKITA 2015/10/02		SEE TABLE				
DRAFT WHERE APPLICABLE MUST REMAIN WITHIN DIMENSIONS				SIZE A3	THIS DRAWING CONTAINS INFORMATION THAT IS PROPRIETARY TO MOLEX INCORPORATED AND SHOULD NOT BE USED WITHOUT WRITTEN PERMISSION			

10 9 8 7 6 5 4 3 2 1

10 9 8 7 6 5 4 3 2 1

紫 VIOLET	橙 ORANGE	茶 BROWN	緑 GREEN	青 BLUE	黄 YELLOW	赤 RED	黒 BLACK	色 COLOR
501330-1539	501330-1538	501330-1537	501330-1536	501330-1534	501330-1533	501330-1532	501330-1531	15
501330-1439	501330-1438	501330-1437	501330-1436	501330-1434	501330-1433	501330-1432	501330-1431	14
501330-1339	501330-1338	501330-1337	501330-1336	501330-1334	501330-1333	501330-1332	501330-1331	13
501330-1239	501330-1238	501330-1237	501330-1236	501330-1234	501330-1233	501330-1232	501330-1231	12
501330-1139	501330-1138	501330-1137	501330-1136	501330-1134	501330-1133	501330-1132	501330-1131	11
501330-1039	501330-1038	501330-1037	501330-1036	501330-1034	501330-1033	501330-1032	501330-1031	10
501330-0939	501330-0938	501330-0937	501330-0936	501330-0934	501330-0933	501330-0932	501330-0931	9
501330-0839	501330-0838	501330-0837	501330-0836	501330-0834	501330-0833	501330-0832	501330-0831	8
501330-0739	501330-0738	501330-0737	501330-0736	501330-0734	501330-0733	501330-0732	501330-0731	7
501330-0639	501330-0638	501330-0637	501330-0636	501330-0634	501330-0633	501330-0632	501330-0631	6
MATERIAL NO.	MATERIAL NO.	MATERIAL NO.	MATERIAL NO.	MATERIAL NO.	MATERIAL NO.	MATERIAL NO.	MATERIAL NO.	CKT. MODEL NO.

白 WHITE	色 COLOR
501330-1500	15
501330-1400	14
501330-1300	13
501330-1200	12
501330-1100	11
501330-1000	10
501330-0900	9
501330-0800	8
501330-0700	7
501330-0600	6
MATERIAL NO.	CKT. MODEL NO.

REVISED IEC NO: J2016-0342 DRW:HMATSUYAMA 2015/10/02 CHK:KASAKAWA 2015/10/02 APPR:NUKITA 2015/10/02 REV:	GENERAL TOLERANCES (UNLESS SPECIFIED)		DIMENSION STYLE		SCALE	DESIGN UNITS	THIRD ANGLE PROJECTION 1.0 WIRE TO BOARD CONN. 1-ROW RECEPTACLE HOUSING 6-15CKT. molex DOCUMENT NO. SD-501330-002 SHEET NO. 2 OF 2
	0.25 UNDER	± 0.03	MM ONLY		10:1	METRIC	
	0.25 OVER 0.5 UNDER	± 0.05	DRAWN BY	DATE	TITLE		
	0.5 OVER 1.0 UNDER	± 0.1	NYOSHIDA	2004/07/30	1.0 WIRE TO BOARD CONN. 1-ROW RECEPTACLE HOUSING 6-15CKT.		
	1.0 OVER 10 UNDER	± 0.2	CHECKED BY	DATE	SEE TABLE		
	10 OVER 30 UNDER	± 0.25	MYAGI	2004/07/30	MATERIAL NO.		
30 OVER	± 0.3	APPROVED BY	DATE	DRAFT WHERE APPLICABLE MUST REMAIN WITHIN DIMENSIONS			
ANGULAR	± 3 °	NUKITA	2015/10/02	SIZE A3			
				THIS DRAWING CONTAINS INFORMATION THAT IS PROPRIETARY TO MOLEX INCORPORATED AND SHOULD NOT BE USED WITHOUT WRITTEN PERMISSION			

9 8 7 6 5 4 3 2 1