



Distributor of FCI: Excellent Integrated System Limited

Datasheet of 69667-006 - .755 VERT HDR. W/O MTG-HOLES

Contact us: sales@integrated-circuit.com Website: www.integrated-circuit.com

Excellent Integrated System Limited

Stocking Distributor

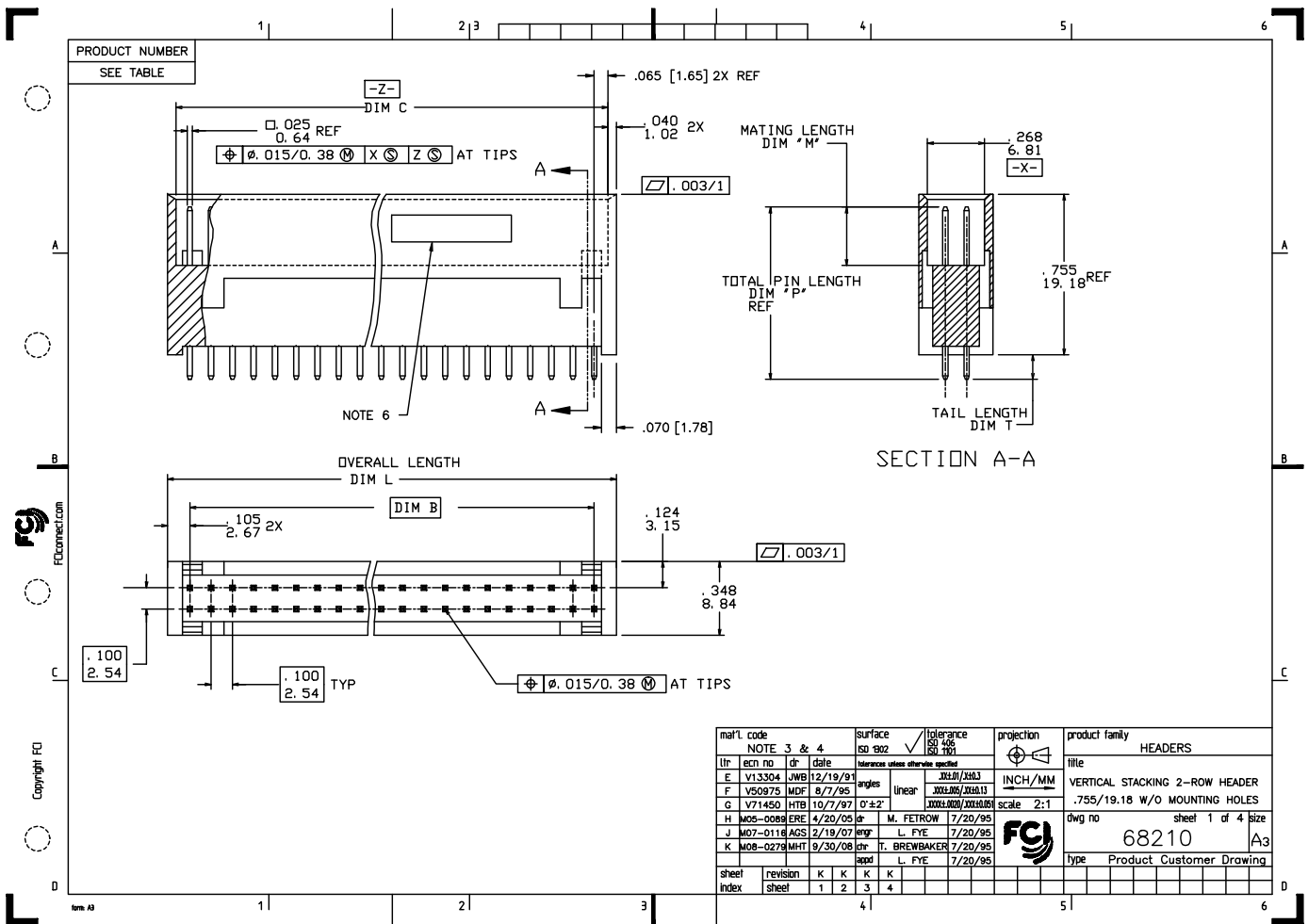
Click to view price, real time Inventory, Delivery & Lifecycle Information:

[FCI](#)

[69667-006](#)

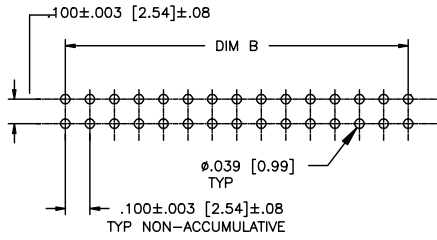
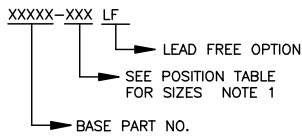
For any questions, you can email us directly:

sales@integrated-circuit.com



POSITION TABLE	
PRODUCT NO	SIZE
XXXXX-001	2X5
-002	2X6
-003	2X7
-004	2X8
-005	2X9
-006	2X10
-007	2X11
-008	2X12
-009	2X13
-010	2X14
-011	2X15
-012	2X16
-013	2X17
-014	2X18
-015	2X19
-016	2X20
-017	2X21
-018	2X22
-019	2X23
-020	2X24
-021	2X25
-022	2X26
-023	2X27
-024	2X28
-025	2X29
-026	2X30
-027	2X31
-028	2X32
-029	2X33
-030	2X34
-031	2X35
XXXXX-032	2X36

PART NUMBER INFORMATION



NOTES

- SEE POSITION TABLE FOR PRODUCT NO AND SIZE TABULATION. HOUSING DASH NO IS SAME AS HEADER DASH NO.
- DIM B = (NO OF COLUMNS - 1) TIMES .100 (ENGLISH)
(NO OF COLUMNS - 1) TIMES 2.54 (METRIC)
- MOLDING MATERIAL: 20% MIN GLASS FILLED NYLON PER UL 94V-0. COLOR: BLACK, OXYGEN INDEX 36.
OR
MINERAL FILLED LCP FLAME RETARDENT PER UL-94V-0. COLOR: BLACK.
- TERMINAL MATERIAL: 3/4 HARD PHOS BRONZE ALLOY UNS C51000.
- PIN RETENTION TO BE 3 LBS./1.4 KGS MINIMUM PER PIN IN EITHER DIRECTION.
- COMPANY LOGO TO BE MOLDED IN APPROX LOCATION SHOWN.
- ADD "LF" SUFFIX AT THE END OF PART NUMBER FOR LEAD FREE OPTION.
- THE HOUSING WILL WITHSTAND EXPOSURE TO 260° FOR 15 SECONDS IN A WAVE SOLDER APPLICATION WITH A 1.5mm MINIMUM THICK CIRCUIT BOARD SEE APPLICATION NOTES/PROCEDURES IF THEY ARE AVAILABLE.
- THIS PRODUCT MEETS EUROPEAN UNION DIRECTIVES AND OTHER COUNTRY REGULATION AS DESCRIBED IN GS-22-008.
- PLATING OPTIONS:
MAY BE EITHER GOLD OR GXT PLATED AT MANUFACTURER'S OPTION.

RECOMMENDED PC BOARD LAYOUT
SCALE 2/1

mat'l. code	NOTE 3 & 4	surface	tolerance	projection	product family
lit	ecm no	ISO 1902	ISO 146	INCH/MM	HEADERS
k	dr	date	ISO 1101	scale	title
			tolerances unless otherwise specified	2:1	VERTICAL STACKING 2-ROW HEADER
			angles linear		.755/19.18 W/O MOUNTING HOLES
			0±2'		dwg no
			dr		68210
			engr		sheet 2 of 4 size
			chr		A3
			appd		Type Product Customer Drawing
sheet index	revision sheet				

PRODUCT NO NOTE 7	TERMINAL PLATING (NOTE 10)
68210-XXX	15u"/0.38u MIN Au OVER 50u"/1.27u MIN Ni.
68210-033	15u"/0.38u MIN Au OVER 50u"/1.27u MIN Ni.
68210-034	15u"/0.38u MIN Au OVER 50u"/1.27u MIN Ni.
68533-XXX	120u"/3.05u MIN 93/7 SnPb OVER 50u"/1.27u MIN Ni.
68583-XXX	30u"/0.76u MIN GXT OVER 50u"/1.27u MIN Ni.
69205-XXX	15u"/0.38u MIN GXT OVER 50u"/1.27u MIN Ni.
69667-XXX	30u"/0.76u MIN Au OVER 50u"/1.27u MIN Ni.
69963-XXX	DUPLEX { CONTACT: 15u"/0.38u Au OVER 50u"/1.27u Ni. TAIL: 100u"/2.54u MIN Sn OVER 50u"/1.27u Ni.
69967-XXX	DUPLEX { CONTACT: 30u"/0.76u Au OVER 50u"/1.27u Ni. TAIL: 100u"/2.54u MIN Sn OVER 50u"/1.27u Ni.
89445-022	15u"/0.38u MIN Au OVER 50u"/1.27u MIN Ni.
90045-XXX	DUPLEX { CONTACT: 15u"/0.38u Au OVER 50u"/1.27u Ni. TAIL: 100u"/2.54u MIN Sn OVER 50u"/1.27u Ni.

mat'l. code		NOTE 3 & 4		surface	tolerance	projection	product family
K		ecm no		ISO 1902	ISO 1006		HEADERS
dr		date		tolerances unless otherwise specified		INCH/MM	title
				angles	linear	scale 2:1	VERTICAL STACKING 2-ROW HEADER
				0±2'	XXX.XXX/XXX.XXX		.755/19.18 W/O MOUNTING HOLES
				dr	M. FETROW	7/20/95	dwg no
				engr	L. FYE	7/20/95	sheet 3 of 4 size
				chr	T. BREWBAKER	7/20/95	A3
				appd	L. FYE	7/20/95	Type Product Customer Drawing
sheet index	revision sheet						

PRODUCT NO NOTE 7	SIZE	DIM "B"	DIM "C"	DIM "L"	TAIL LENGTH DIM "T"	MATING LENGTH DIM "M"	TOTAL PIN LENGTH DIM "P"
68210-XXX	NOTE 1	NOTE 2	DIM "B" +.130/3.30	DIM "B" +.210/5.33	.103/2.62 MIN .130/3.30 MAX	.275±.010 6.98±0.25	.810/20.57
68210-033	2 x 15	1.400/35.56	1.53/38.9	1.61/40.9	.148±.008 3.76±0.20	.275±.010 6.98±0.25	.840/21.34
68210-034	2 x 25	2.400/60.96	2.53/64.3	2.61/66.3	.148±.008 3.76±0.20	.275±.010 6.98±0.25	.840/21.34
68533-XXX	NOTE 1	NOTE 2	DIM "B" +.130/3.30	DIM "B" +.210/5.33	.103/2.62 MIN .130/3.30 MAX	.275±.010 6.98±0.25	.810/20.57
68583-XXX						.275±.010 6.98±0.25	.810/20.57
69205-XXX						.275±.010 6.98±0.25	.810/20.57
69667-XXX						.275±.010 6.98±0.25	.810/20.57
69963-XXX						.275±.010 6.98±0.25	.810/20.57
69967-XXX	NOTE 1	NOTE 2	DIM "B" +.130/3.30	DIM "B" +.210/5.33		.275±.010 6.98±0.25	.810/20.57
89445-022	2 x 26	2.500/63.50	2.63/66.8	2.71/68.8		.400±.010 10.16±0.25	.935/23.75
90045-XXX	NOTE 1	NOTE 2	DIM "B" +.130/3.30	DIM "B" +.210/5.33		.275±.010 6.98±0.25	.810/20.57
69967-XXX	NOTE 1	NOTE 2	DIM "B" +.130/3.30	DIM "B" +.210/5.33		.275±.010 6.98±0.25	.810/20.57
89445-022	2 x 26	2.500/63.50	2.63/66.8	2.71/68.8	.103/2.62 MIN .130/3.30 MAX	.400±.010 10.16±0.25	.935/23.75
90045-XXX	NOTE 1	NOTE 2	DIM "B" +.130/3.30	DIM "B" +.210/5.33	.103/2.62 MIN .130/3.30 MAX	.275±.010 6.98±0.25	.810/20.57

mat'l. code		NOTE 3 & 4		surface	ISO 1902	tolerance	ISO 1466 ISO 1101	projection	product family	
ltr	ecm no	dr	date	tolerances unless otherwise specified					INCH/MM	HEADERS
K				angles	linear	XXX.XXX/XXX.XXX	XXX.XXX/XXX.XXX	scale	2:1	
				0±.2						
				dr	M. FETROW	7/20/95				
				engr	L. FYE	7/20/95				
				chr	T. BREWBAKER	7/20/95				
				appd	L. FYE	7/20/95				
sheet	revision									
index	sheet									