

Excellent Integrated System Limited

Stocking Distributor

Click to view price, real time Inventory, Delivery & Lifecycle Information:

[FCI](#)
[DAM15S300](#)

For any questions, you can email us directly:

sales@integrated-circuit.com

Contact us: sales@integrated-circuit.com Website: www.integrated-circuit.com

DBML25S300

REFERENCE SPECIFICATIONS

-NFC 93425 (in compliance with HE 501)

PHYSICAL CHARACTERISTICS

-INSULATOR MATERIAL: THERMOPLASTIC UL94V0

-CONTACT MATERIAL: PHOSPHOR BRONZE
GOLD OVER NICKEL

-ACCESSORIES: BRASS ,cadmium plated yellow passivation

-SHELLS: STEEL ,cadmium plated yellow passivation

ELECTRICAL CHARACTERISTICS

-NOMINAL CURRENT: 7.5A

-CONTACT RESISTANCE: <= 7.3 m ohms

-CONTACT/CONTACT : >=1000 V

-CONTACT/GROUND : >=1200 V

-INSULATION RESISTANCE: >=5000 MOhms

ENVIRONMENTAL CHARACTERISTICS

- CLIMATIC CATEGORY: 55/125/56

TEMPERATURE RANGE -55°C TO +125°C

DAMP HEAT STEADY STATE 56 DAYS

SALT SPRAY 48 HOURS

MECHANICAL CHARACTERISTICS

- RETENTION AGAINST TORQUE: - Threaded insert: 0.7 N.m minimum

- Female screw : 0.5 N.m minimum

Series

Shell size: **E A B C D**
see sheet 2

Front accessory definition
see sheet 2

Blank : without accessory

F : floating mounting

L : threaded insert M3

O : threaded insert UNC 4-40

V : female screw UNC 4-40

S : spacer

Contact number (see sheet 2)

9,15,25,37,50

Contacts

S : Socket

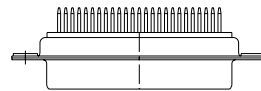
Termination type

3 : Straight version

Plating

00 : 500 matings/unmatings

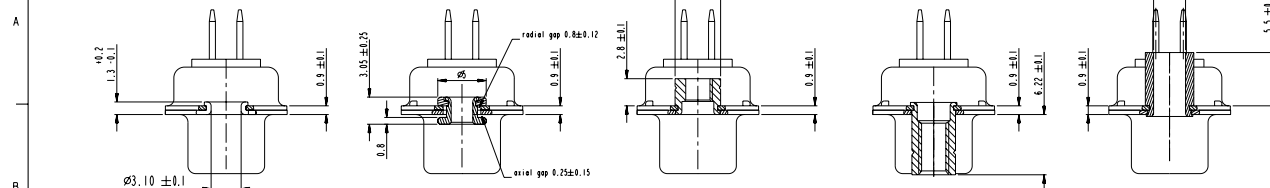
43 : 500 matings/unmatings for harsh environment



25 WAY for Example

www.fciconnect.com				surface	tolerance std	projection	mm
				150 1302	150 400	150 1100	
				TOLERANCES UNLESS OTHERWISE SPECIFIED			
REV	REV NO	DT	DATE	DR	M. PESSON	2006/11/06	ANGULAR
A	LS07-0273	WPE	2006/11/06	ENG	P. LEGARE	2006/11/06	LINEAR
B	LS07-0273	WPE	2007/02/20	ENG	P. LEGARE	2006/11/06	P. REF
				DES	P. LEGARE	2006/11/06	Product family
				FCI SUB FEMALE DM HE501 series			
				with straight solder contact			
				C01-8637-1734			
				CUSTOMER			
				sheet 1 of 4			

Contact us: sales@integrated-circuit.com Website: www.integrated-circuit.com



FRONT ACCESSORY	Blank without	F floating mounting	L insert M3 O insert UNC 4.40	V female screw UNC 4.40	S spacer
-----------------	---------------	---------------------	----------------------------------	-------------------------	----------

PART NUMBER	FRONT ACCESSORY
D*MxxS300	without
D*MFxxS300	floating mounting
D*MLxxS300	insert M3
D*MOxxS300	insert UNC 4.40
D*MVxxS300	female screw UNC 4.40
D*MSxxS300	spacer

PART NUMBER	FRONT ACCESSORY
D*MxxS343	without
D*MFxxS343	floating mounting
D*MLxxS343	insert M3
D*MOxxS343	insert UNC 4.40
D*MVxxS343	female screw UNC 4.40
D*MSxxS343	spacer

shell size	Contact number
#	XX
E	09
A	15
B	25
C	37
D	50

CROSS REFERENCES HE501 and FCI

HE501 P/N	FCI P/N	FRONT ACCESSORY
HE501NxxYS4	D*MxxS300	without
HE501FxxYS4	D*MFxxS300	floating mounting

SCALE: 4

www.fciconnect.com		surface	tolerance std	projection	mm
		150 1902	150 400 150 1100		
		TOLERANCES UNLESS OTHERWISE SPECIFIED			
Dr	M. PESSON	2006/11/06	ANGULAR	0.2	0.3
Eng	P. LEGARE	2006/11/06	LINEAR	0.25	0.1
Chr	P. LEGARE	2006/11/06	0.25	0.25	0.05
Appr	P. LEGARE	2006/11/06	Product family	Spec. ref.	
FCI SUB FEMALE DM HE501 series			C01-8637-1734		
with straight solder contact			CUSTOMER		
drawing no			sheet 2 of 4		

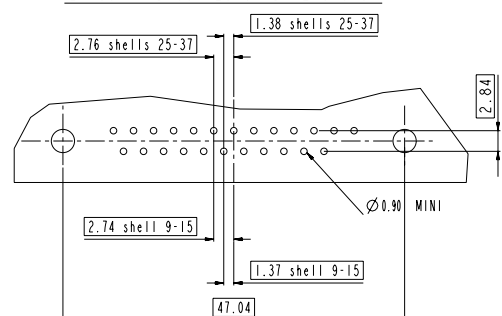
Contact us: sales@integrated-circuit.com Website: www.integrated-circuit.com



DIMENSIONS FOR SHELL E, A, B, C

Dimensions are in millimeters

Shell size	Number of contacts	A ^{+0.76 -0}	B ^{+0.25 -0}	C ^{±0.12}	F ^{+0.57 -0}	G ^{+0.25 -0}	H ^{+0.5 -0}
E	09	30.43	16.21	24.99	10.64	6.05	19.02
A	15	38.76	24.54	33.32	10.64	6.05	27.25
B	25	52.65	38.25	47.04	10.64	6.05	41.02
C	37	68.94	54.71	63.50	10.64	6.05	57.45

LAYOUT AND CONNECTOR DIMENSIONS



www.fciconnect.com				surface <input checked="" type="checkbox"/> tolerance std 150 AUM		projection 		mm	
				TOLERANCES UNLESS OTHERWISE SPECIFIED					
Dr	M	PESSON	2006/11/06	ANGULAR		0.1	size	A2	Scale
Eng	P	LEGARE	2006/11/06	LINEAR		0.1X			2:1
Chr	P	LEGARE	2006/11/06	1° ± 0.2°		0.1X	± 0.5	ECN	LS07-023
Appr	P	LEGARE	2006/11/06	Product family				- Spec ref	
		SUB FEMALE DM H501 series						Rev	
		with straight solder contact						B	
catalog no						CUSTOMER		sheet 3 of 4	
		tag no				C01-8637-1734			

Contact us: sales@integrated-circuit.com Website: www.integrated-circuit.com

