



Distributor of FCI: Excellent Integrated System Limited

Datasheet of DB17W2P300A00LF - D-Sub Connector Plug, Male Pins 17 (15 + 2 Power)
Position Through Hole Solder

Contact us: sales@integrated-circuit.com Website: www.integrated-circuit.com

Excellent Integrated System Limited

Stocking Distributor

Click to view price, real time Inventory, Delivery & Lifecycle Information:

[FCI](#)

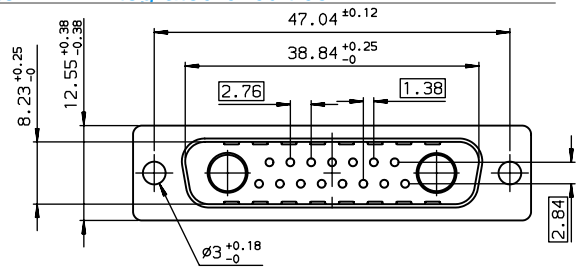
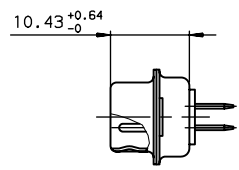
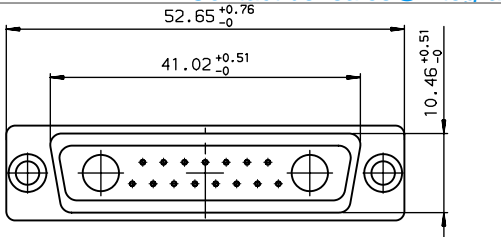
[DB17W2P300A00LF](#)

For any questions, you can email us directly:

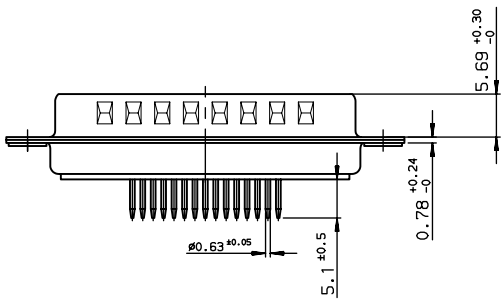
sales@integrated-circuit.com

Contact us: sales@integrated-circuit.com Website: www.integrated-circuit.com

A

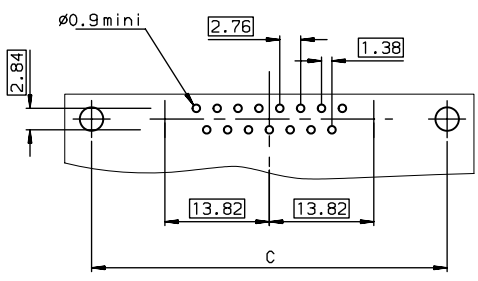


B



C

LAYOUT DIMENSIONS (after plating)
CONNECTOR SIDE VIEW



DB17W2P300A00LF
PART NUMBER

GENERAL CHARACTERISTICS AND ROHS INFORMATIONS.
SEE DRAWING C01-8639-0000

European Views

www.fciconnect.com		surface	tolerance std	projection	mm
		ISO 1302	ISO 406 ISO 1101		
		TOLERANCES UNLESS OTHERWISE SPECIFIED			
Dr	PESSON	2005/12/01	ANGULAR	0.X	±0.1
Eng	PESSON	2005/12/01	LINEAR	0.XX	±0.1
Chr	LEGARE	2005/12/01	0.XXX	±2	±0.1
Appr	LEGARE	2005/12/01	Product family		D-SUB
		size		A3	Scale 2
		ECN		LS06-0095	
		Spec ref		-	
		PIN CONNECTOR WITH STRAIGHT SPILL.		2	Rev. B
catalog no		-		CUSTOMER	sheet 1 of 1

rev	ecn no	dr	date
A	LS06-0106	MPE	2005/12/01
B	LS06-0095	LGO	2006/06/16
-	-	-	-
-	-	-	-
-	-	-	-
-	-	-	-

Copyright FCI.
FCI

REV F - 2006-04-17