



**Distributor of FCI: Excellent Integrated System Limited**

Datasheet of D50S24A4PA00LF - D-Sub Connector Receptacle, Female Sockets 50 Position  
Through Hole Solder

Contact us: [sales@integrated-circuit.com](mailto:sales@integrated-circuit.com) Website: [www.integrated-circuit.com](http://www.integrated-circuit.com)

---

## Excellent Integrated System Limited

Stocking Distributor

Click to view price, real time Inventory, Delivery & Lifecycle Information:

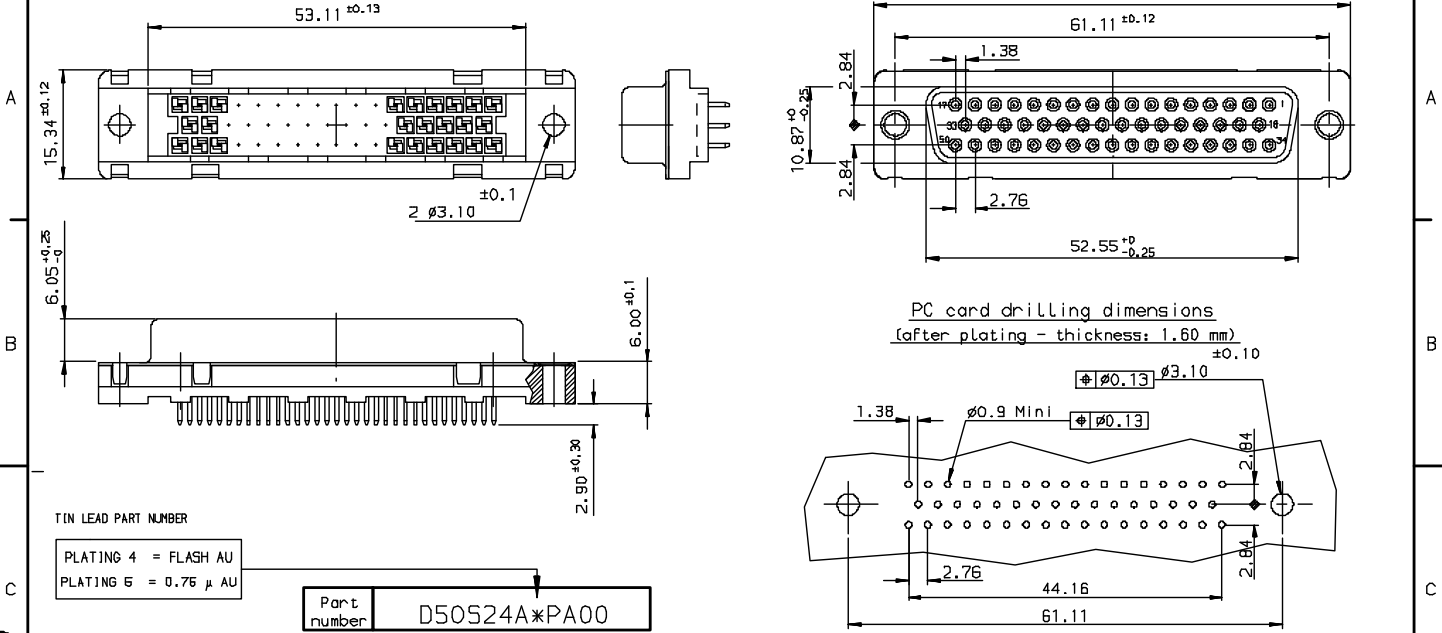
[FCI](#)

[D50S24A4PA00LF](#)

For any questions, you can email us directly:

[sales@integrated-circuit.com](mailto:sales@integrated-circuit.com)

Contact us: [sales@integrated-circuit.com](mailto:sales@integrated-circuit.com) Website: [www.integrated-circuit.com](http://www.integrated-circuit.com)



TIN LEAD PART NUMBER

PLATING 4 = FLASH AU  
 PLATING 5 = 0.75 μ AU

Part number **D50S24A\*PA00**

LEAD FREE PART NUMBER

PLATING 4 = FLASH AU  
 PLATING 5 = 0.75 μ AU

Part number **D50S24A\*PA00LF**

GENERAL CHARACTERISTICS AND ROHS INFORMATIONS:  
 SEE DRAWING C01-8646-0000

European Views

www.fciconnect.com		surface	150 1302	tolerance std	ISO 406 ISO 1101	projection	mm
TOLERANCES UNLESS OTHERWISE SPECIFIED							
Dr	LENOIR	1994/06/24	ANGULAR	∅.X	±0.1	size	A3
Eng	PESSON	1994/06/24	LINEAR	∅.XX	±0.1	Scale	2
Chr	LEGARE	1994/06/24	LOC ±2°	∅.XXX	±0.1	ECN	LS06-0095
Appr	LEGARE	1994/06/24	Product Family	D-SUB Spec ref -			
FCI		FEMALE CONNECTOR DELTA D 50 -EUROPE		July 20	C01-8646-0254		Rev. F
catalog no				CUSTOMER		sheet 1 of 1	

rev	son no	in	date
D	-	MLE	1998/11/14
E	LS06-001	MPE	2005/03/10
F	LS06-0085	LGO	2006/06/18
-	-	-	-
-	-	-	-
-	-	-	-

REV F - 2006-04-17

Copyright FCI