



**Distributor of FCI: Excellent Integrated System Limited**

Datasheet of D25S13A4PA00LF - D-Sub Connector Receptacle, Female Sockets 25 Position Through Hole, Right Angle Solder

Contact us: [sales@integrated-circuit.com](mailto:sales@integrated-circuit.com) Website: [www.integrated-circuit.com](http://www.integrated-circuit.com)

---

## **Excellent Integrated System Limited**

Stocking Distributor

Click to view price, real time Inventory, Delivery & Lifecycle Information:

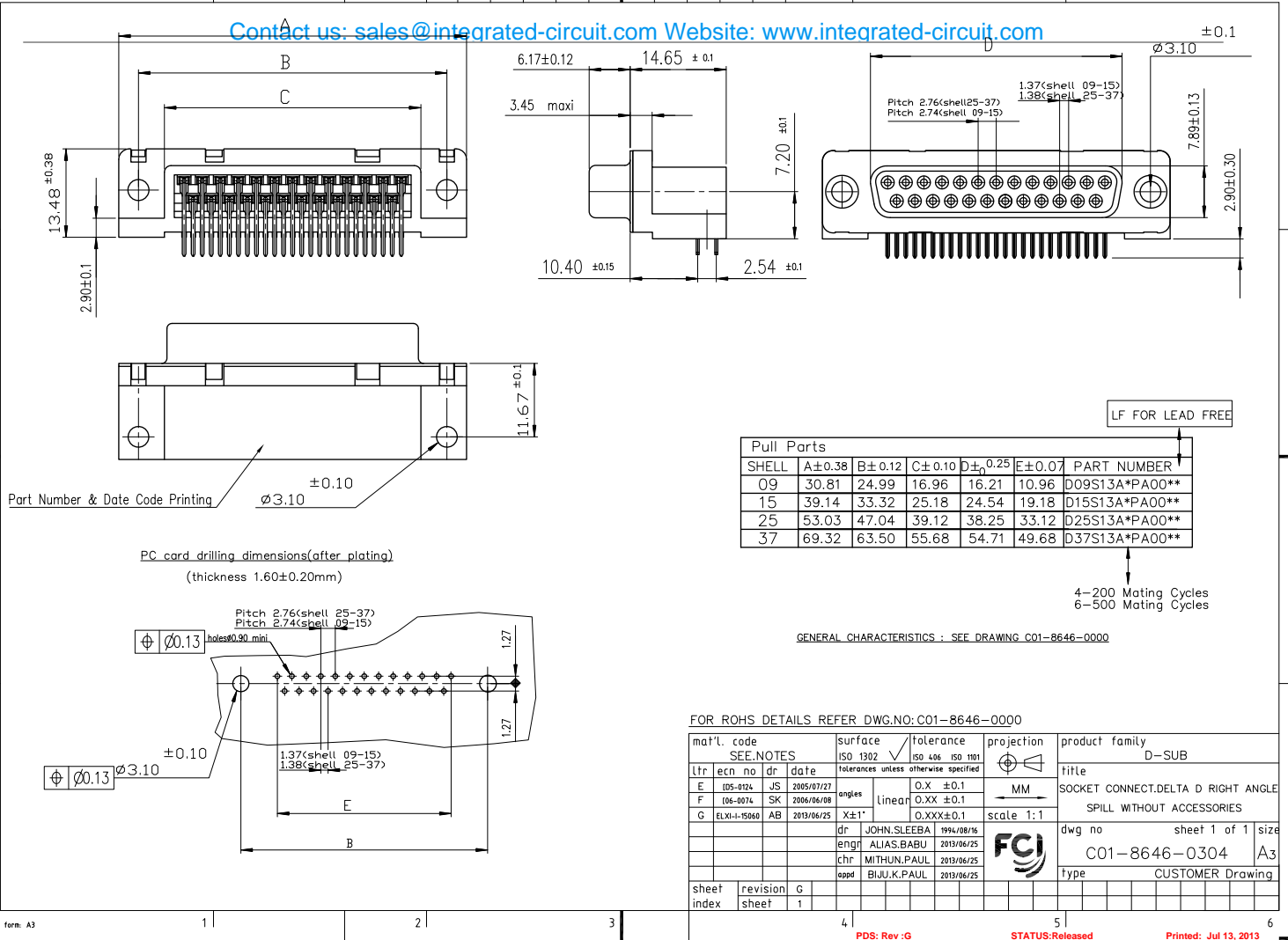
[FCI](#)

[D25S13A4PA00LF](#)

For any questions, you can email us directly:

[sales@integrated-circuit.com](mailto:sales@integrated-circuit.com)

Contact us: [sales@integrated-circuit.com](mailto:sales@integrated-circuit.com) Website: [www.integrated-circuit.com](http://www.integrated-circuit.com)



Pull Parts						
SHELL	A±0.38	B±0.12	C±0.10	D±0.25	E±0.07	PART NUMBER
09	30.81	24.99	16.96	16.21	10.96	D09S13A*PA00**
15	39.14	33.32	25.18	24.54	19.18	D15S13A*PA00**
25	53.03	47.04	39.12	38.25	33.12	D25S13A*PA00**
37	69.32	63.50	55.68	54.71	49.68	D37S13A*PA00**

LF FOR LEAD FREE

4-200 Mating Cycles  
6-500 Mating Cycles

GENERAL CHARACTERISTICS : SEE DRAWING C01-8646-0000

FOR ROHS DETAILS REFER DWG.NO: C01-8646-0000

mat'l. code		SEE NOTES		surface	tolerance	projection	product family
				ISO 1302	ISO 406 ISO 1101		D-SUB
lfr	ecn no	dr	date	tolerances unless otherwise specified		MM	title
E	05-0124	JS	2005/07/27	angles	O.X ±0.1		SOCKET CONNECT.DELTA D RIGHT ANGLE
F	06-0074	SK	2006/06/08	linear	O.XX ±0.1		SPILL WITHOUT ACCESSORIES
G	ELXI-15060	AB	2013/06/25	X±1°	O.XXX±0.1	scale 1:1	dwg no sheet 1 of 1 size
		dr	JOHN.SLEEBA	1994/08/16			C01-8646-0304 A3
		engd	ALIAS.BABU	2013/06/25			FCI
		chr	MITHUN.PAUL	2013/06/25			type CUSTOMER Drawing
		appd	BIJU.K.PAUL	2013/06/25			
sheet index	revision sheet	G	1				