

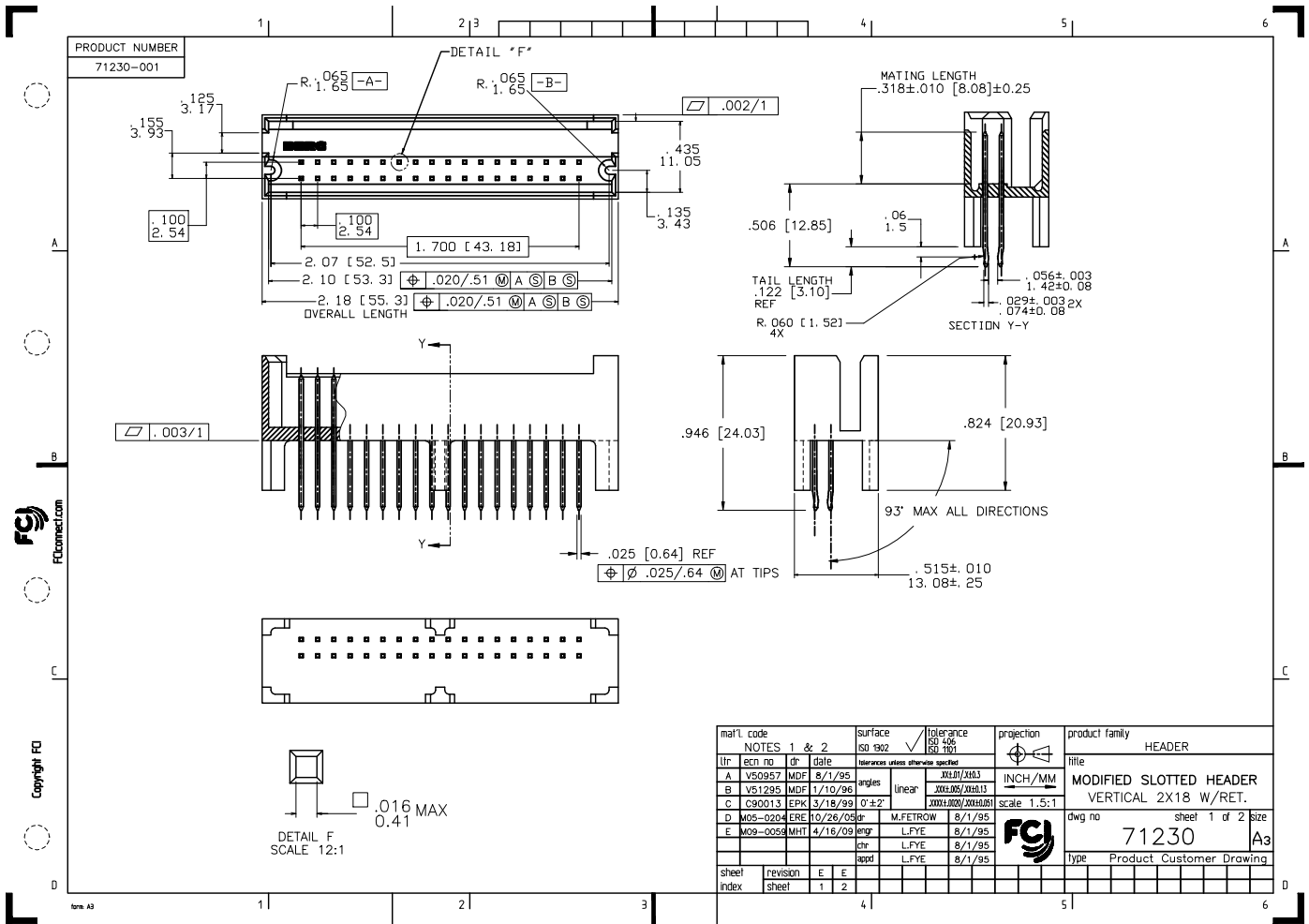
## Excellent Integrated System Limited

Stocking Distributor

Click to view price, real time Inventory, Delivery & Lifecycle Information:

[FCI](#)  
[71230-001](#)

For any questions, you can email us directly:  
[sales@integrated-circuit.com](mailto:sales@integrated-circuit.com)



PRODUCT NUMBER	SIZE	TAIL LENGTH	OVERALL LENGTH	LEAD FREE OPTION
71230-001	2 X 18	.122/3.10	2.18/55.3	NOTE 8

NOTES:

- ① MOLDING MATERIAL: HI-TEMP RESIN PER UL 94V-0  
COLOR: NATURAL
- ② TERMINAL MATERIAL: 3/4 HARD PHOS BRONZE ALLOY
3. PLATING: 30u"/0.76u GXT.
4. PIN RETENTION TO BE 3 LBS/1.36 KG MIN PER PIN IN EITHER DIRECTION.
5. RETENTION FEATURES ARE LOCATED ON THE TWO MOST CENTRAL PAIRS FOR SIZES 2 X 24 AND BELOW. FOR SIZES 2 X 25 AND ABOVE, TWO PAIR ON BOTH ENDS, 2ND AND 3RD COLUMNS, ARE RETENTIVE.
6. MAKE FROM PART NUMBER 71228.
7. PACKAGE PER BUS-14-093-2.
- ⑧ ADD "LF" SUFFIX AT THE END OF PART NUMBER FOR LEAD FREE OPTION.
- ⑨ THESE PRODUCTS MEET EUROPEAN UNION DIRECTIVES AND OTHER COUNTRY REGULATIONS AS DESCRIBED IN GS-22-008.
10. THE HOUSING WILL WITHSTAND EXPOSURE TO 260°C PEAK TEMPERATURE FOR 15 SECONDS IN A WAVE SOLDER APPLICATION WITH A 1.5mm MINIMUM THICK CIRCUIT BOARD. SEE APPLICATION NOTES/PROCEDURES IF THEY ARE AVAILABLE.
- ⑩ PLATING OPTIONS:  
MAY BE EITHER GOLD OR GXT PLATED AT MANUFACTURER'S OPTION.

mat'l. code		surface		tolerance		projection		product family	
NOTES 1 & 2		ISO 1902		ISO 406 ISO 1101				HEADER	
tr	ecm no	dr	date	tolerances unless otherwise specified					
E				angles	0.010/0.254/0.0013		INCH/MM		title
				linear	0.002/0.05/0.010/0.13				MODIFIED SLOTTED HEADER
				0 ± 2'	0.001/0.02/0.001/0.051		scale 1.5:1		VERTICAL 2X18 W/RET.
		dr		M.FETROW	8/11/95				dwg no
		enrg		LFYE	8/11/95				71230
		chr		LFYE	8/11/95				sheet 2 of 2 size
		appd		LFYE	8/11/95				A3
sheet index	revision sheet								Type Product Customer Drawing