



**Distributor of FCI: Excellent Integrated System Limited**

Datasheet of D09S13B6UV00LF - D-Sub Connector Receptacle, Female Sockets 9 Position Through Hole, Right Angle Solder

Contact us: [sales@integrated-circuit.com](mailto:sales@integrated-circuit.com) Website: [www.integrated-circuit.com](http://www.integrated-circuit.com)

---

## Excellent Integrated System Limited

Stocking Distributor

Click to view price, real time Inventory, Delivery & Lifecycle Information:

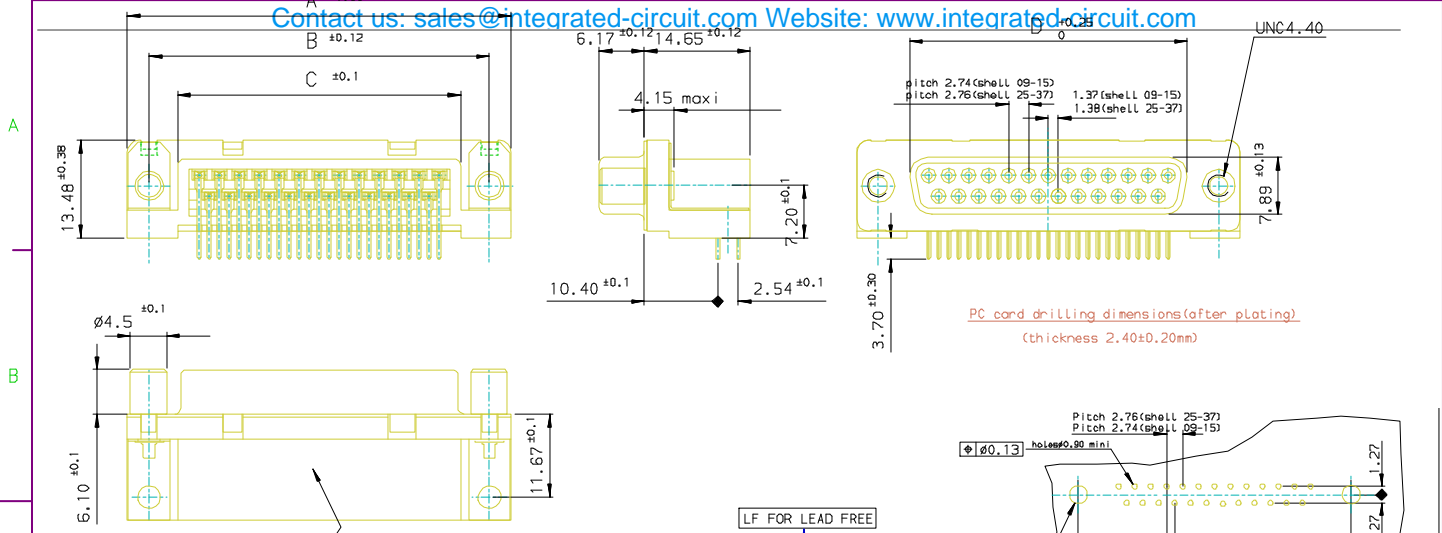
[FCI](#)

[D09S13B6UV00LF](#)

For any questions, you can email us directly:

[sales@integrated-circuit.com](mailto:sales@integrated-circuit.com)

Contact us: [sales@integrated-circuit.com](mailto:sales@integrated-circuit.com) Website: [www.integrated-circuit.com](http://www.integrated-circuit.com)



Part Number & Date Code Printing

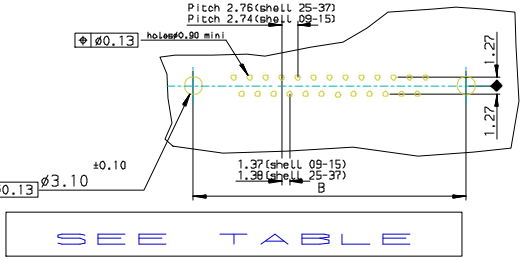
SHELL	A±0.38	B±0.12	C±0.10	D±0.25	PART NUMBER
09	30.81	24.99	16.96	16.21	D09S13B*UV00**
15	39.14	33.32	25.18	24.54	D15S13B*UV00**
25	53.03	47.04	39.12	38.25	D25S13B*UV00**
37	69.32	63.50	55.68	54.71	D37S13B*UV00**

LF FOR LEAD FREE

Plating: 4 --> flash AU  
Plating: 6 --> 0.76µ AU

FOR ROHS DETAILS REFER DWG.NO: C01-8646-0000

**REQUIREMENTS**  
**Technical characteristics:**  
 Shell: steel tin/Zinc Cr3 plated  
 Insulators: self-extinguishing thermoplastic, ULClass94V0  
 Contacts size 20 phosphor bronze, gold on mating end, bright tin on termination end over nickel on entire contact  
 Cycles: ±500 mini for plating 6  
 ±200 mini for plating 4  
 screws: Lock: brass, tin/Zinc Cr3 plated  
 Metal plate for electrical continuity: brass, tin/Zinc Cr3 plated  
**Electrical characteristics:**  
 max. current rating: 5A  
 Test voltage: 1000V  
 Rated voltage: 300V  
 Contact resistance: <15mΩ  
 Shell resistance: <5mΩ  
 Insulation resistance: >5000MΩ  
**Climatic characteristics:**  
 Operating temperature range: -55°C +125°C  
**Dimensions:**  
 in accordance with MIL-C-24308  
 inches are in parenthesis



SEE TABLE

Copyright FCI

rev	ecm no	dr	date
C	05-0124	JS	2005/07/27
D	06-0074	SK	2006/06/08
-	-	-	-
-	-	-	-
-	-	-	-
-	-	-	-

www.fciconnect.com		surface ISO 1302 ✓	tolerance std ISO 406 ISO 1101	projection mm
Dr JOHN SLEEBA 1996/09/18		ANGULAR	LINEAR	size A3 Scale 1:1
Eng GEORGE VJ 1996/09/18		TOLERANCES UNLESS OTHERWISE SPECIFIED		ECN -
Chr GEORGE VJ 2005/07/27		MIN ±1	0.XX ±0.1	0.XXX ±0.1
Appr KVSD 2005/07/27		Product family		D-SUB Spec ref -
FCI	Title		dwg no	Rev.
	SOCKET CONNECT.DELTA D RIGHT ANGLED WITH SCREWLOCK, METAL BRACKET.		C01-8646-0300	d
catalog no	DELTA-D	CUSTOMER		sheet 1 of 1

REV F - 2006-04-17