



Distributor of FCI: Excellent Integrated System Limited

Datasheet of DB17W2SA00LF - D-Sub Connector Receptacle, Female Sockets 17 (15 + 2 Power) Position Free Hanging (In-Line) Solder Cup

Contact us: sales@integrated-circuit.com Website: www.integrated-circuit.com

Excellent Integrated System Limited

Stocking Distributor

Click to view price, real time Inventory, Delivery & Lifecycle Information:

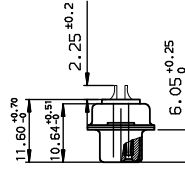
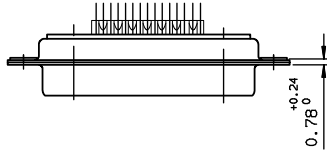
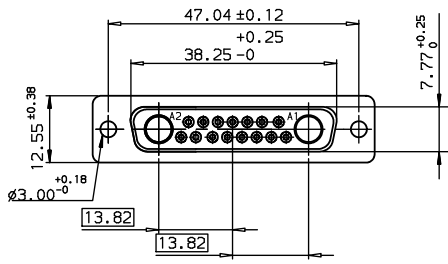
[FCI](#)

[DB17W2SA00LF](#)

For any questions, you can email us directly:

sales@integrated-circuit.com

Contact us: sales@integrated-circuit.com Website: www.integrated-circuit.com



TIN LEAD PART NUMBER

DB17W2SA00
PART NUMBER

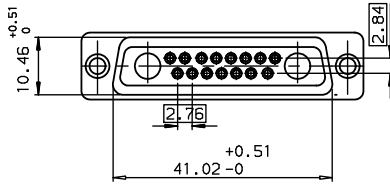
LEAD FREE PART NUMBER

DB17W2SA00LF
PART NUMBER

GENERAL CHARACTERISTICS AND ROHS INFORMATIONS:
SEE DRAWING C01-8639-0003



Copyright FCI.



European Views

www.fciconnect.com		surface ISO 1302	tolerance std ISO 406 ISO 1101	projection mm
		TOLERANCES UNLESS OTHERWISE SPECIFIED		
Dr JARRY	1995/05/11	ANGULAR	0.x ±0.1	size A3
Eng PESSON	1995/05/11	LINEAR	0.xx ±0.1	Scale 1.5
Chr LEGARE	1995/05/11	0.x' ±2'	0.xxx ±0.1	ECN LS06-0095
Appr LEGARE	1995/05/11	Product Family	D-SUB	Spec ref -
FCI		SOCKET CONNECTOR FOR TWO POWERS CONTACTS		Rev. D
catalog no		C01-8639-0581		sheet 1 of 1

rev	ecn no	dr	date
B	-	BAR	2003/10/29
C	LS05-005	MPE	2005/03/16
D	LS06-0095	LGO	2006/07/19
-	-	-	-
-	-	-	-
-	-	-	-
-	-	-	-

REV F - 2006-04-17