



Distributor of FCI: Excellent Integrated System Limited

Datasheet of DAL7W2SA00LF - D-Sub Connector Receptacle, Female Sockets 7 (5 + 2 Power) Position Free Hanging (In-Line) Solder Cup

Contact us: sales@integrated-circuit.com Website: www.integrated-circuit.com

Excellent Integrated System Limited

Stocking Distributor

Click to view price, real time Inventory, Delivery & Lifecycle Information:

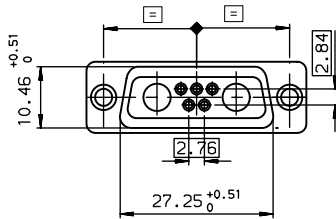
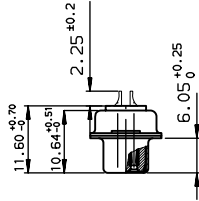
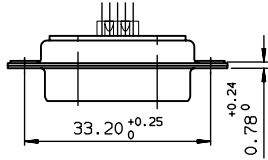
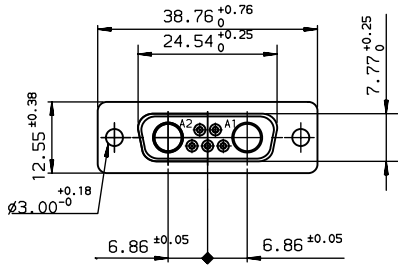
[FCI](#)

[DAL7W2SA00LF](#)

For any questions, you can email us directly:

sales@integrated-circuit.com

Contact us: sales@integrated-circuit.com Website: www.integrated-circuit.com



TIN LEAD PART NUMBER

Core range
DA7W2SA00
PART NUMBER

LEAD FREE PART NUMBER

Core range
DA7W2SA00LF
PART NUMBER

GENERAL CHARACTERISTICS AND ROHS INFORMATIONS:
SEE DRAWING C01-8639-0003

European Views

www.fciconnect.com		surface ISO 1302 ✓	tolerance std ISO 406 ISO 1101		projection 	mm ←→
TOLERANCES UNLESS OTHERWISE SPECIFIED						
Dr	JARRY	1995/01/26	ANGULAR	0.X	±0.1	size A3
Eng	PESSON	1995/01/26	LINEAR	0.XX	±0.1	Scale 1.5
Chr	LEGARE	1995/01/26	0.XX ±2	0.XXX	±0.1	ECN LS06-0095
Appr	LEGARE	1995/01/26	Product family		D-SUB	Spec ref -
rev	ecn no	dr	date	FCI		
D	-	BAR	2003/10/28	SOCKET CONNECTOR MARK 1 FOR POWERS		
E	LS06-005	MPE	2005/03/16	CONTACTS		
F	LS06-0095	LGO	2006/07/19	C01-8639-0572-1		
-	-	-	-	Rev. F		
-	-	-	-	CUSTOMER sheet 1 of 1		

REV F - 2006-04-17

3 PDM: Rev:F

STATUS: Released

Printed: Sep 15, 2006



Copyright FCI.