



Distributor of FCI: Excellent Integrated System Limited

Datasheet of DAL7W2S300G40LF - D-Sub Connector Receptacle, Female Sockets 7 (5 + 2 Power) Position Through Hole Solder

Contact us: sales@integrated-circuit.com Website: www.integrated-circuit.com

Excellent Integrated System Limited

Stocking Distributor

Click to view price, real time Inventory, Delivery & Lifecycle Information:

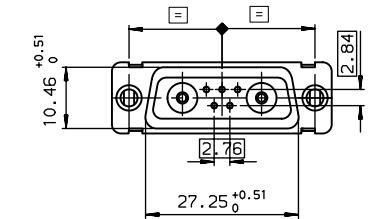
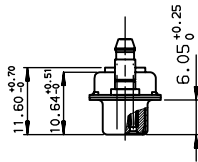
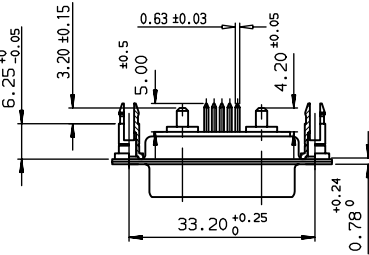
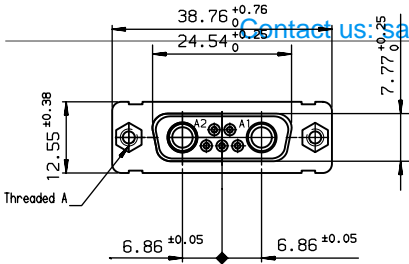
[FCI](#)

[DAL7W2S300G40LF](#)

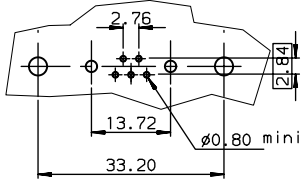
For any questions, you can email us directly:

sales@integrated-circuit.com

Contact us: Sales@integrated-circuit.com Website: www.integrated-circuit.com



LAYOUT DIMENSIONS (after plating)
CONNECTOR SIDE VIEW



REV F - 2006-04-17

TIN LEAD PART NUMBER

DAL7W2S300G30	M3
PART NUMBER	Threaded A

LEAD FREE PART NUMBER

DAL7W2S300G30LF	M3
PART NUMBER	Threaded A

GENERAL CHARACTERISTICS AND ROHS INFORMATIONS:
SEE DRAWING C01-8639-0000

European Views

www.fciconnect.com		surface ISO 1302 ✓	tolerance std ISO 406 ISO 1101	projection mm
Dr JARRY 1994/08/30		TOLERANCES UNLESS OTHERWISE SPECIFIED		Scale 1.5
Eng PESSON 1994/08/30	Chr LEGARE 1994/08/30	ANGULAR	LINEAR	size A3
Chr LEGARE 1994/08/30	Appr LEGARE 1994/08/30	0.XX ±0.1	0.XXX ±0.1	ECN LS06-0095
Product family D-SUB		Spec ref -		Rev. H
FCI SOCKET CONNECTOR WITH TWO POWERS CONTACTS		C01-8639-0557		CUSTOMER sheet 1 of 1

rev	ecn no	dr	date
F	-	BAR	2004/02/27
G	LS05-001	MPE	2005/03/07
H	LS06-0095	LGO	2006/07/19
-	-	-	-
-	-	-	-
-	-	-	-