

## Excellent Integrated System Limited

Stocking Distributor

Click to view price, real time Inventory, Delivery & Lifecycle Information:

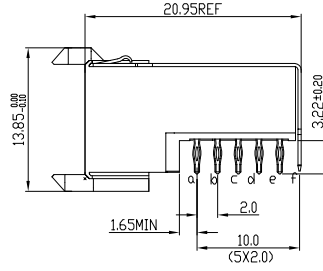
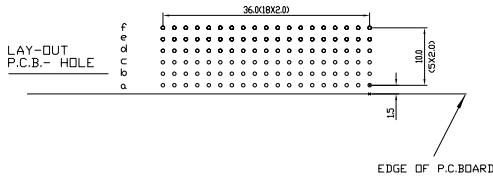
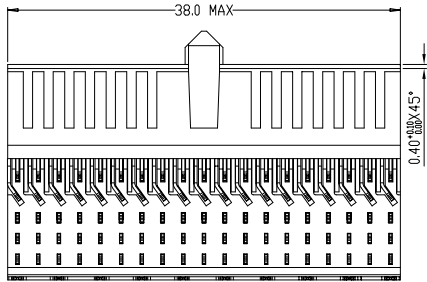
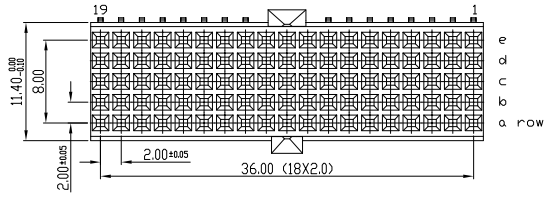
[FCI](#)  
[HM2R67PA5108N9](#)

For any questions, you can email us directly:  
[sales@integrated-circuit.com](mailto:sales@integrated-circuit.com)

Tous droits strictement réservés. Reproduction ou communication à des tiers interdite sous quelque forme que ce soit sans autorisation écrite du propriétaire. Propriété de c FCI. Droits de reproduction FCI.



All rights strictly reserved. Reproduction or issue to third parties in any form whatsoever is not permitted without written authority from the proprietor. Property of FCI. Copyright FCI.



**PERFORMANCE CHARACTERISTICS**

CURRENT RATING: 1.5 A AT 20°C (FULLY LOADED)  
 1 A AT 70°C (FULLY LOADED)  
 RATED VOLTAGE: 500 V AC (CONT /CONT)  
 OPERATING TEMPERATURE: -55°C TO 125°C  
 CONTACT RESISTANCE: ±20 mΩ MAX  
 INSERTION FORCE: 0.75N MAX/CONT  
 EXTRACTION FORCE: 0.15N MIN /CONT  
 INSULATION RESISTANCE: 10<sup>4</sup> MΩ MIN

**NOTES**

- LEAD FREE INDICATOR -LF=LEAD FREE
- PERFORMANCE LEVEL INDICATOR (REF DWG NO.BSC.201844.003)
- THIS PRODUCT IS CSA APPROVED. THIS PRODUCT IS UL RECOGNIZED.
- FOR RECOMMENDED PTH DIMENSIONS REFER DRAWING :BS.A.201572.001
- THIS PRODUCT (LF) MEETS EUROPEAN UNION DIRECTIVES AND OTHER COUNTRY REGULATIONS AS DESCRIBED IN GS-22-008

Material		Spec ref	
Mat code		tolerance	projection
Heatreat		13ECC40.2 13EC SPEC PART SPEC ANGLES 11°/100°EN	MM
Plating/Finish		size	Scale
Dr N.OTTO	06-05-99	A4	2/1
Eng		Model Name	ECN
Chr		Model Revision	REL Level
Appr			
rev	ecn no	dr	date
A	105-0085	KN	14-09-01
B	105-0085	MNI	06-06-05
C	DG05-0278	gscon	02-08-05
D	DG07-0362	gscon	05-09-07
E	DG10-0110	NZ	05-30-10
FCI title		ding co	Rev.
MPACS 5+2R RA RCP CDNN TYPE AB		BS,C ,201444,046	E
Pro/E file	catalog no	HM2R67PA5108----	CUSTOMER
		sheet 1 of 1	