



**Distributor of FCI: Excellent Integrated System Limited**

Datasheet of DAV7W2P500G30LF - D-Sub Connector Plug, Male Pins 7 (5 + 2 Power) Position Through Hole, Right Angle Solder

Contact us: [sales@integrated-circuit.com](mailto:sales@integrated-circuit.com) Website: [www.integrated-circuit.com](http://www.integrated-circuit.com)

---

## Excellent Integrated System Limited

Stocking Distributor

Click to view price, real time Inventory, Delivery & Lifecycle Information:

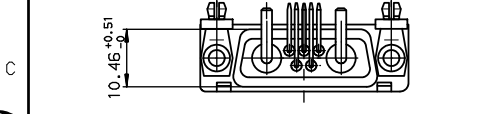
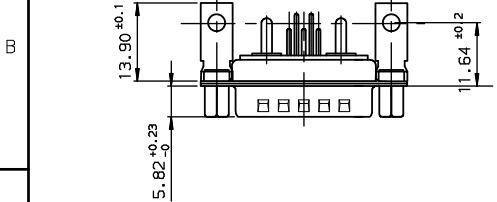
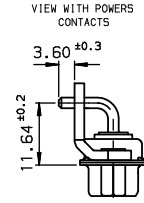
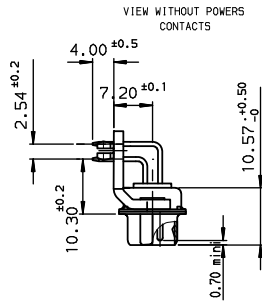
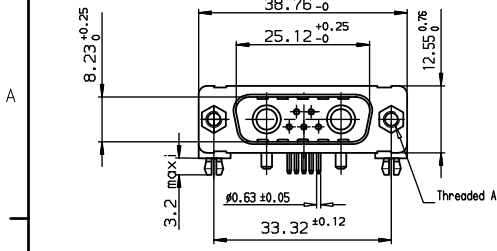
[FCI](#)

[DAV7W2P500G30LF](#)

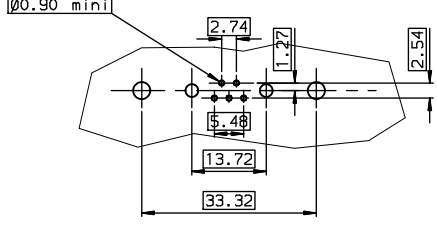
For any questions, you can email us directly:

[sales@integrated-circuit.com](mailto:sales@integrated-circuit.com)

Contact us: [sales@integrated-circuit.com](mailto:sales@integrated-circuit.com) Website: [www.integrated-circuit.com](http://www.integrated-circuit.com)



LAYOUT DIMENSIONS (after plating)  
CONNECTOR SIDE VIEW



TIN LEAD PART NUMBER

|               |            |
|---------------|------------|
| DAV7W2P543G30 | UNC 4.40   |
| DA17W2P543G30 | M3         |
| DAV7W2P500G30 | UNC 4.40   |
| DA17W2P500G30 | M3         |
| PART NUMBER   | Threaded A |

LEAD FREE PART NUMBER

|                 |            |
|-----------------|------------|
| DAV7W2P543G30LF | UNC 4.40   |
| DA17W2P543G30LF | M3         |
| DAV7W2P500G30LF | UNC 4.40   |
| DA17W2P500G30LF | M3         |
| PART NUMBER     | Threaded A |

GENERAL CHARACTERISTICS AND ROHS INFORMATIONS:  
SEE DRAWING C01-8639-0000

|                        |                |   |                                   |                       |
|------------------------|----------------|---|-----------------------------------|-----------------------|
| www.fciconnect.com     |                | surface<br>ISO 1302                             | tolerance std<br>ISO 406 ISO 1101 | projection<br>mm      |
|                        |                | TOLERANCES UNLESS OTHERWISE SPECIFIED           |                                   |                       |
| Dr JARRY 1995/03/03    | ANGULAR        | 0.x   | ±0.1                              | size A3 Scale 1.5     |
| Eng PESSON 1995/03/03  | LINEAR         | 0.xx  | ±0.1                              | ECN LS06-0095         |
| Chr LEGARE 1995/03/03  | 0.xx           | ±0.1  | ECN                               | LS06-0095             |
| Appr LEGARE 1995/03/03 | Product Family | D-SUB Spec ref -                                |                                   |                       |
| FCI                    |                | PIN CONNECTOR RIGHT ANGLED WITH POWERS CONTACTS |                                   | Rev. E                |
| catalog no             |                | C01-8639-0449                                   |                                   | CUSTOMER sheet 1 of 1 |

| rev | ecn no    | dr  | date       |
|-----|-----------|-----|------------|
| C   | -         | BAR | 2003/10/16 |
| D   | LS05-001  | MPE | 2005/03/07 |
| E   | LS06-0095 | LGO | 2006/07/19 |
| -   | -         | -   | -          |
| -   | -         | -   | -          |
| -   | -         | -   | -          |

REV F - 2006-04-17

Copyright FCI.