

Excellent Integrated System Limited

Stocking Distributor

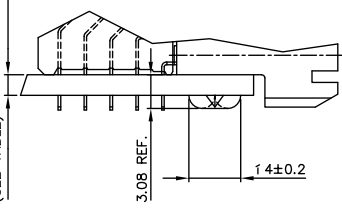
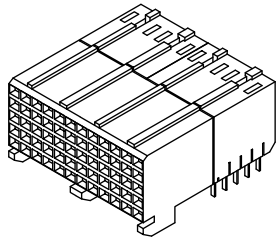
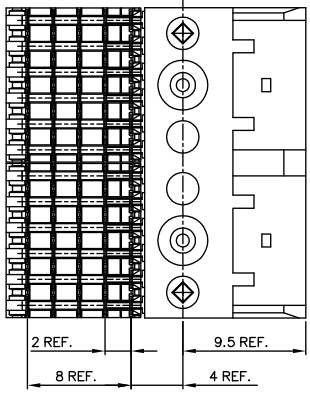
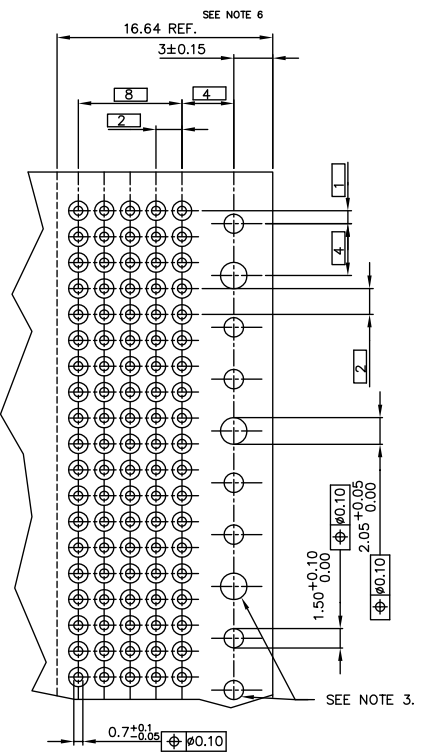
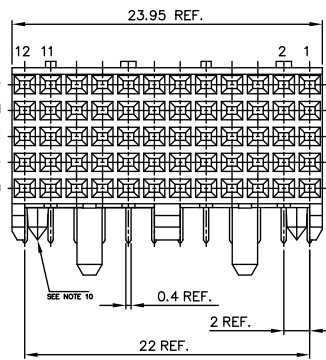
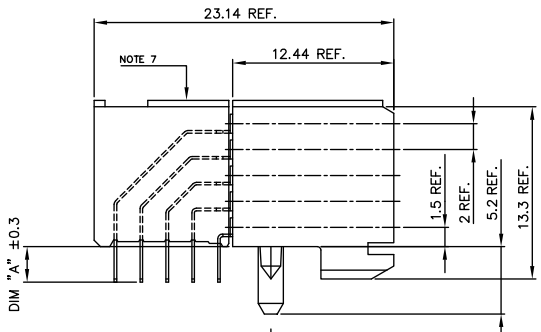
Click to view price, real time Inventory, Delivery & Lifecycle Information:

[FCI](#)
[89014-912](#)

For any questions, you can email us directly:
sales@integrated-circuit.com

PLATING CONTACT AREA:	
DASH NR:	PERFORMANCE LEVEL
-1YY/1YYLF	TELCORDIA CO
-2YY/2YYLF	CUSTOMER SPECIAL
-3YY/3YYLF	CUSTOMER SPECIAL

PC BOARD VERSIONS		
PRODUCT NR:	PCB THICKNESS DIM "A"	
89014-X02/X02LF	1.6	2.90
89014-X12/X12LF	2.4	3.53



- NOTES:
- 1 BODY MAT'L: LIQUID CRYSTAL POLYMER 30% GLASS
FLAME RETARDANT ACC. UL 94-V0
 - 2 TERMINAL MATERIAL: PHOSPHOR BRONZE.
 - 3 INDICATED HOLES ARE UNPLATED.
 - 4 PLATING OF SOLDER TAILS 2-8 um SnPb 90-97 OR 2-8 um PURE Sn FOR LEAD FREE.
 - 5 PRODUCT MARKING: PART NUMBER & BATCH ID.
 - 6 SET BACK FOR TAIL BLOCK.
 - 7 TOP SURFACE OF PRESS BLOCK MAY EXTEND UP TO 0.4MM HIGHER THAN HOUSING. THIS MAY AFFECT THE TAIL LENGTH BEFORE APPLICATION TO A BOARD.
 - 8 THIS PRODUCT MEETS EUROPEAN UNION DIRECTIVES AND OTHER COUNTRY REGULATIONS AS DESCRIBED IN GS-22-008
 - 9 THE HOUSING WILL WITHSTAND EXPOSURE TO 250DEGREE PEAK TEMPERATURE FOR 10 SECONDS IN A WAVE SOLDER APPLICATION.
 - 10 DIAMOND LOCATION PEG ARE ONLY EXISTED ON THE BOTH SIDES OF PRODUCT.

mat'l. code	tolerances unless otherwise specified	CUSTOMER COPY	FCI ELECTRONICS
ltr	ecr	no	dr
A	H40101	VWJ	940209
B	H40487	D08	940802
C	V00576	LLA	000316
D	V00850	QNY	000512
E	0004-0104	CLM	001223
F	0007-0170	Cent	002207
G	0009-0008	Car	06/08/00pp
sheet	revision	C	
index	sheet	1	61