

Excellent Integrated System Limited

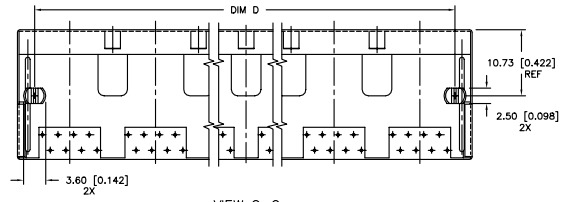
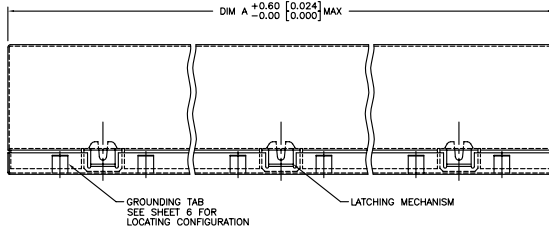
Stocking Distributor

Click to view price, real time Inventory, Delivery & Lifecycle Information:

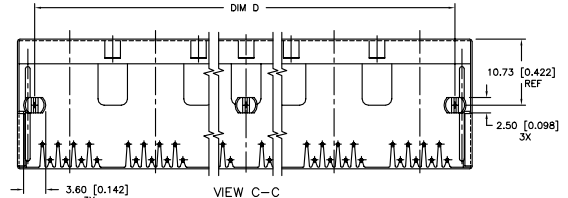
[FCI](#)
[94910-001AMLF](#)

For any questions, you can email us directly:
sales@integrated-circuit.com

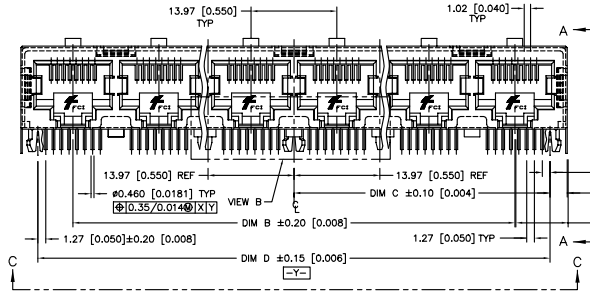
PRODUCT NO.
SEE TABLE



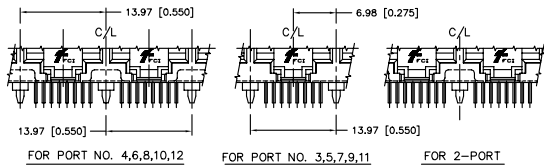
VIEW C-C
-XXXLF PRODUCT ONLY (WITHOUT CENTER PEG - SEE NOTE 8)



VIEW C-C
-XXXM, -XXXMLF PRODUCT ONLY (WITH CENTER PEG - SEE NOTE 7)



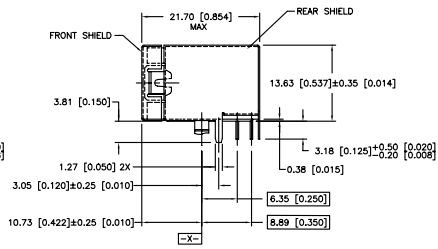
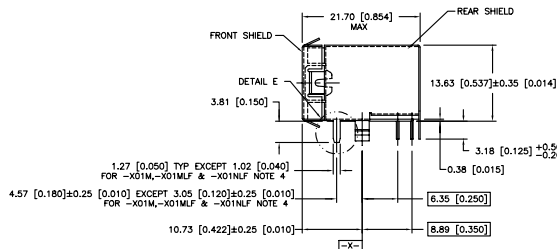
- 1.27 [0.050] -X02M THRU -X12M & -X02NLF THRU -X12NLF
- 2.79 [0.110] $\pm 0.20 \begin{matrix} [0.008] \\ \text{TYP} \end{matrix}$ -X01M, -X01AM, -X01NLF & -X01ANLF
- X01MLF, -X01AMLF
- 8.51 [0.335] -X02M THRU -X12M & -X02NLF THRU -X12NLF
- 7.87 [0.310] -X01M, -X01AM, -X01NLF & -X01ANLF
- X01MLF, -X01AMLF



VIEW B
(CENTER PEG OMITTED FOR CLARITY,
-XXXM, -XXXMLF PRODUCT ONLY)

mat'l. code	surface ISD1302 ✓	tolerance ISD1101 ISD406	projection mm	product family MOD JACK
tr ecn nchr date	tolerances unless otherwise specified		mm	title
R M05-0067 MIT 4/8/05	angles	0.XX±0.3	mm	R/A 8 POS GANG JACK ASSY
S N08-0001 SH 1/3/07	radius	0.XX±0.15	mm	SHIELDED, SNAP PEG
T N08-0100 SH 09/25/08	0°±2'	0.XXX±0.05	scale 1.0	dwg no 94910
U N08-0239 SH 11/10/08	dir	KCHOU 3/18/93		sheet 1 of 6
V ELX-N-010997 SH 3/14/12	enrg	TC 3/18/93		size A4
	chr	J.TSAO 3/18/93		
	appd	J.TSAO 3/18/93		
sheet revision	v	v	v	v
index sheet	1	2	3	4

PRODUCT NO
 SEE TABLE

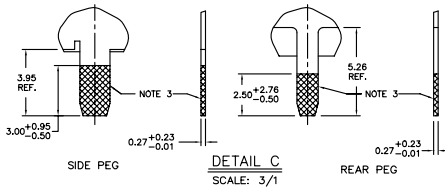
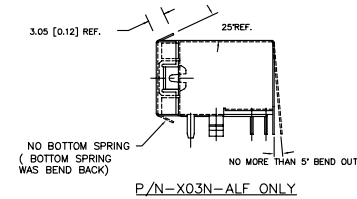


VIEW A-A

NOTE 5

NOTES:

1. RECOMMENDED P.C.B. THICKNESS 1.60 [0.063].
2. CONTACTS: PHOS BRONZE ALLOY UNS-C51000, ϕ 0.460 [0.0181] ROUND WIRE, PLATING SEE TABLE.
3. SHIELDING MAT'L: .25 [0.010] THICK BRASS ALLOY.
 SHIELDING PLATING: FOR 94910-XXXX: 2.54 μ M/100 μ " MIN BRIGHT TIN-LEAD PLATED OVER 0.76 μ M/30 μ " MIN NICKEL UNDERPLATING PER BUS-15-002/M.
 LEAD FREE OPTION:
 FOR 94910-XXXNLF: 0.76 μ M/30 μ " MIN NICKEL PLATING, WITH SELECTIVE TIN ON SOLDER TAILS, SEE DETAIL E.
4. SHIELDING PLATING: FOR 94910-XXXMLF: 2.54 μ M/100 μ " MIN BRIGHT PURE TIN PLATED OVER 0.76 μ M/30 μ " MIN NICKEL UNDERPLATING PER BUS-15-002/M.
5. SPECIALLY FOR ONE-PORT P/N 94910-X01M,-X01MLF & 94910-X01NLF ONLY. SOLDER TAIL OF SHIELD IS 1.02 [0.040] WIDE, DISTANCE FROM PCB PEG TO THE SOLDER TAIL IS 3.05 [0.120].
6. SPECIALLY FOR ONE-PORT P/N 94910-X01AM,-X01AMLF & 94910-X01ANLF ONLY. SOLDER TAIL OF SHIELD IS 1.27 [0.050] WIDE, DISTANCE FROM PCB PEG TO THE SOLDER TAIL IS 3.05 [0.120].
6. ALL DIMENSIONS IN MILLIMETERS/INCHES.
7. CENTER PEG FOR 8-PORTS AND ABOVE, (-XXXM,-XXXMLF PRODUCT ONLY).
8. NO CENTER PEG AVAILABLE ON -XXXNLF PRODUCT.
9. "LF" SUFFIX AT THE END OF PART NUMBER IS LEAD FREE.
10. THE HOUSING WILL WITHSTAND EXPOSURE TO 260°C PEAK TEMPERATURE FOR 15 SECONDS IN A WAVE SOLDER APPLICATION WITH A 1.5mm MINIMUM THICK CIRCUIT BOARD. SEE APPLICATION NOTES/PROCEDURES IF THEY ARE AVAILABLE.
11. THIS PRODUCT MEETS EUROPEAN UNION DIRECTIVES AND OTHER COUNTRY REGULATION AS DESCRIBED IN GS-22-008
12. PLATING OPTIONS:
 MAY BE EITHER GOLD OR GXT PLATED AT MANUFACTURER'S OPTION.



mat'l. code	surface	tolerance	projection	product family
	ISD1302 ✓	ISD1101 ISD406		MOD JACK
l tr ecn n d r	date	tolerances unless otherwise specified	mm	title
R M05-0067 MHT	4/8/05	0.X±0.3	mm	R/A 8 POS GANG JACK ASSY
S N08-0001 SH	1/3/07	0.XX±0.15	mm	SHIELDED, SNAP PEG
T N08-0100 SH	09/25/08	0.XXX±0.05	scale 1.0	
U N08-0239 SH	11/10/08	dir	KCHOU	3/18/93
V ELX-N-010997 SH	3/14/12	enr	TC	3/18/93
		chr	J.TSAO	3/18/93
		appd	J.TSAO	3/18/93
sheet	revision			
index	sheet			



PRODUCT No.	No. OF PORTS	DIM A +0.60 [0.024] -0	DIM B	DIM C±0.10 [0.004]	DIM D±0.15 [0.006]	GROUND LEG NO. ON THE BACK (VIEW B)	NOTE
94910-X01M	1	15.74 [0.620]	-----	5.72 [0.225]	11.43 [0.450]	NONE	NOTE 4
94910-X01AM	1	15.74 [0.620]	-----	5.72 [0.225]	11.43 [0.450]	NONE	NOTE 5
94910-X04M	4	58.92 [2.320]	41.91 [1.650]	26.67 [1.050]	53.34 [2.100]	3	
94910-X08M	8	114.80 [4.520]	97.79 [3.850]	54.61 [2.150]	109.22 [4.300]	3	
94910-X01MLF	1	15.74 [0.620]	-----	5.72 [0.225]	11.43 [0.450]	NONE	NOTE 4
94910-X01AMLF	1	15.74 [0.620]	-----	5.72 [0.225]	11.43 [0.450]	NONE	NOTE 5
94910-X04MLF	4	58.92 [2.320]	41.91 [1.650]	26.67 [1.050]	53.34 [2.100]	3	
94910-X08MLF	8	114.80 [4.520]	97.79 [3.850]	54.61 [2.150]	109.22 [4.300]	3	
94910-X11MLF	1	15.74 [0.620]	-----	5.72 [0.225]	11.43 [0.450]	NONE	NOTE 4
94910-X11AMLF	1	15.74 [0.620]	-----	5.72 [0.225]	11.43 [0.450]	NONE	NOTE 5
94910-X14MLF	4	58.92 [2.320]	41.91 [1.650]	26.67 [1.050]	53.34 [2.100]	3	
94910-X18MLF	8	114.80 [4.520]	97.79 [3.850]	54.61 [2.150]	109.22 [4.300]	3	

0: MEETS WAVE SOLDER PROCESS PRODUCT NO.
 1: MEETS PIP PROCESS PRODUCT NO.

PLATING CODE X	PLATING (12)
0	Su* Au + high performance lubricant
1	.38uM/15u* GOLD
3	Su* Au + high performance lubricant
5	1.27uM/50u* GOLD

mat'l. code	surface	tolerance	projection	product family
ISDI302	ISDI101	ISD406	MOD JACK	
tr ecn ndr date	tolerances unless otherwisespecified	angle	mm	title
R M05-0067 MIF 4/8/05	0.X±0.3			R/A 8 POS GANG JACK ASSY
S N08-0001 SH 1/3/07	0.XX±0.15		scale 1.0	SHIELDED, SNAP PEG
T N08-0100 SH 09/25/08	0.XXX±0.05			
U N08-0239 SH 11/10/08	dr	KCHOU	3/18/93	dwg no
V ELX-N-010997 SH MW 3/14/12	enr	Tc	3/18/93	sheet 3 of 6
	chr	J.TSAO	3/18/93	size
	appd	J.TSAO	3/18/93	A4
sheet	revision			type
index	sheet			Product Customer Drawing



1 | 2

FCIconnect.com

3 |

4

PRODUCT No.	PORTS	DIM A ₋₀	DIM B±0.20 [0.008]	DIM C±0.10 [0.004]	DIM D±0.15 [0.006]	THE BACK (VIEW B)	
94910-X01NLF	1	15.74 [0.620]	-----	5.72 [0.225]	11.43 [0.450]	NONE	NOTE 4
94910-X01ANLF	1	15.74 [0.620]	-----	5.72 [0.225]	11.43 [0.450]	NONE	NOTE 5
94910-X04NLF	4	58.92 [2.320]	41.91 [1.650]	26.67 [1.050]	53.34 [2.100]	3	
94910-X08NLF	8	114.80 [4.520]	97.79 [3.850]	54.61 [2.150]	109.22 [4.300]	3	
94910-X11NLF	1	15.74 [0.620]	-----	5.72 [0.225]	11.43 [0.450]	NONE	NOTE 4
94910-X11ANLF	1	15.74 [0.620]	-----	5.72 [0.225]	11.43 [0.450]	NONE	NOTE 5
94910-X14NLF	4	58.92 [2.320]	41.91 [1.650]	26.67 [1.050]	53.34 [2.100]	3	
94910-X18NLF	8	114.80 [4.520]	97.79 [3.850]	54.61 [2.150]	109.22 [4.300]	3	

0: MEETS WAVE SOLDER PROCESS PRODUCT NO.
1: MEETS PIP PROCESS PRODUCT NO.

PLATING CODE X	PLATING (2)
0	.76uM/30u" G.X.T.
1	.38uM/15u" GOLD
3	5u" Au + high performance lubricant
5	1.27uM/50u" GOLD

mat'l. code	surface	tolerance	projection	product family
	ISD1302 ✓	ISD1101 ISD406		MOD JACK
ltr	ecndr	date	tolerances unless otherwise specified	title
R	M05-0067	MIT	4/8/05	0.X±0.3
S	N08-0001	SH	1/3/07	0.XX±0.15
T	N08-0100	SH	09/25/08	0.XXX±0.05
U	N08-0239	SH	11/10/08	0.XXX±0.05
V	ELX-N-010897	SH	3/14/12	0.XXX±0.05
		dir	KCHOU	3/18/93
		enr	TC	3/18/93
		chr	J.TSAO	3/18/93
		appd	J.TSAO	3/18/93
sheet	revision			
index	sheet			



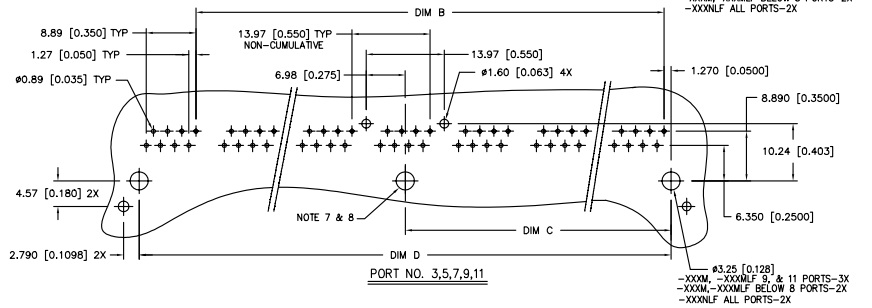
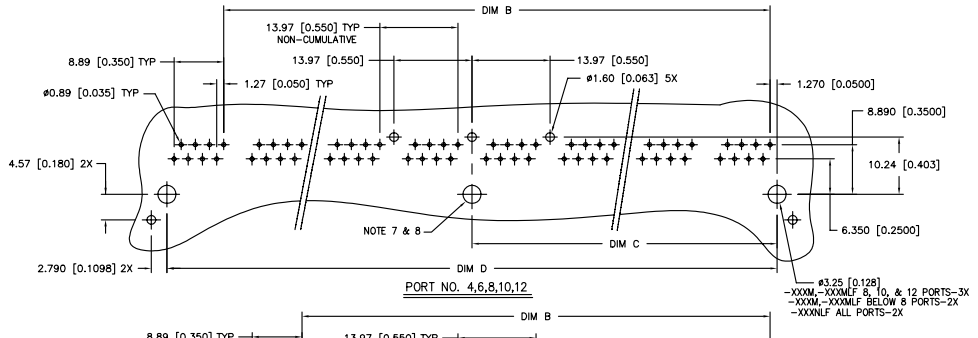
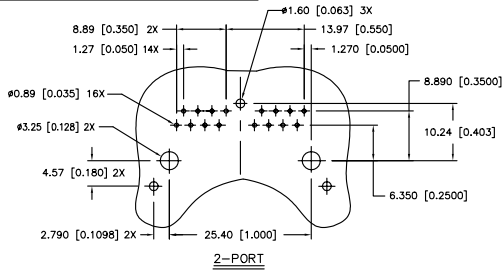
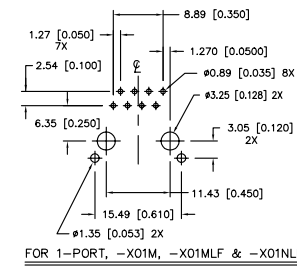
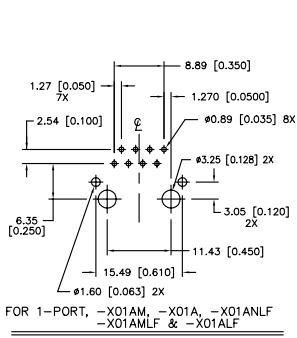
1 | 2

FCIconnect.com

3 |

4

PRODUCT NO.
SEE TABLE



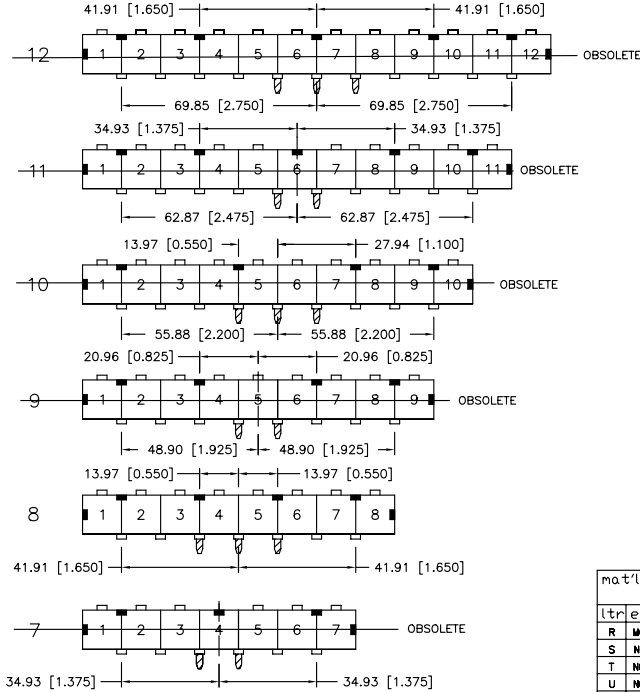
RECOMMENDED P.C.B LAYOUT

mat'l. code	surface	tolerance	projection	product family
	ISD1302 ✓	ISD1101 ISD406		MOD JACK
l'tec'n n'dr	date	tolerances unless otherw'spec'f'd	mm	title
R M05-0067	MHT 4/8/05	0.XX±0.3	mm	R/A 8 POS GANG JACK ASSY
S N08-0001	SH 1/3/07	0.XX±0.15	scale 1.0	SHIELDED, SNAP PEG
T N08-0100	SH 09/25/08	0.XXX±0.05		FCI
U N08-0239	SH 11/10/08	dr KCHOU 3/18/93		dwg no 94910
V ELX-N-010997	SH MMD 3/14/12	enr TC 3/18/93		sheet 5 of 6
		chr J.TSAO 3/18/93		size A4
		app'd J.TSAO 3/18/93		type Product Customer Drawing
sheet index	revision sheet			

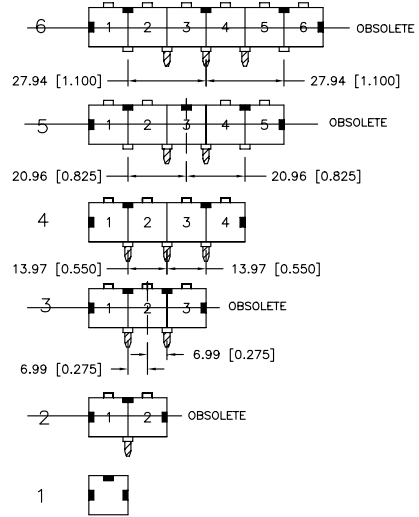
LATCHING AND GROUNDING TAB LOCATING CONFIGURATION

- INDICATES LATCHING TAB (SEE SHEET 1)
- INDICATES GROUNDING TAB ON THE FRONT OF PRODUCT (SEE SHEET 1)
- ▨ INDICATES GROUNDING LEG ON THE BACK OF PRODUCT (VIEW B)

PORT NUMBERS



PORT NUMBERS



mat'l. code	surface	tolerance	projection	product family
	ISD1302 ✓	ISD1101 ISD406		MOD JACK
l tr ecn nldr date	tolerances unless otherwise specified			title
R M05-0067 MHT 4/8/05	0.X±0.3	mm	R/A 8 POS GANG JACK ASSY	
S N08-0001 SH 1/3/07	0.XX±0.15	mm	SHIELDED, SNAP PEG	
T N08-0100 SH 09/25/08	0.XXX±0.05	scale 1.0	FCI	
U N08-0239 SH 11/10/08	dr KCHOU 3/18/93	dwg no 94910 sheet 6 of 6 size A4		
V ELX-N-010997 SH MMD 3/14/12	enr TC 3/18/93	type Product Customer Drawing		
	chr J.TSAO 3/18/93			
	appd J.TSAO 3/18/93			
sheet index	revision sheet			