



Distributor of FCI: Excellent Integrated System Limited

Datasheet of DA7W2P500A30LF - D-Sub Connector Plug, Male Pins 7 (5 + 2 Power) Position Through Hole, Right Angle Solder

Contact us: sales@integrated-circuit.com Website: www.integrated-circuit.com

Excellent Integrated System Limited

Stocking Distributor

Click to view price, real time Inventory, Delivery & Lifecycle Information:

[FCI](#)

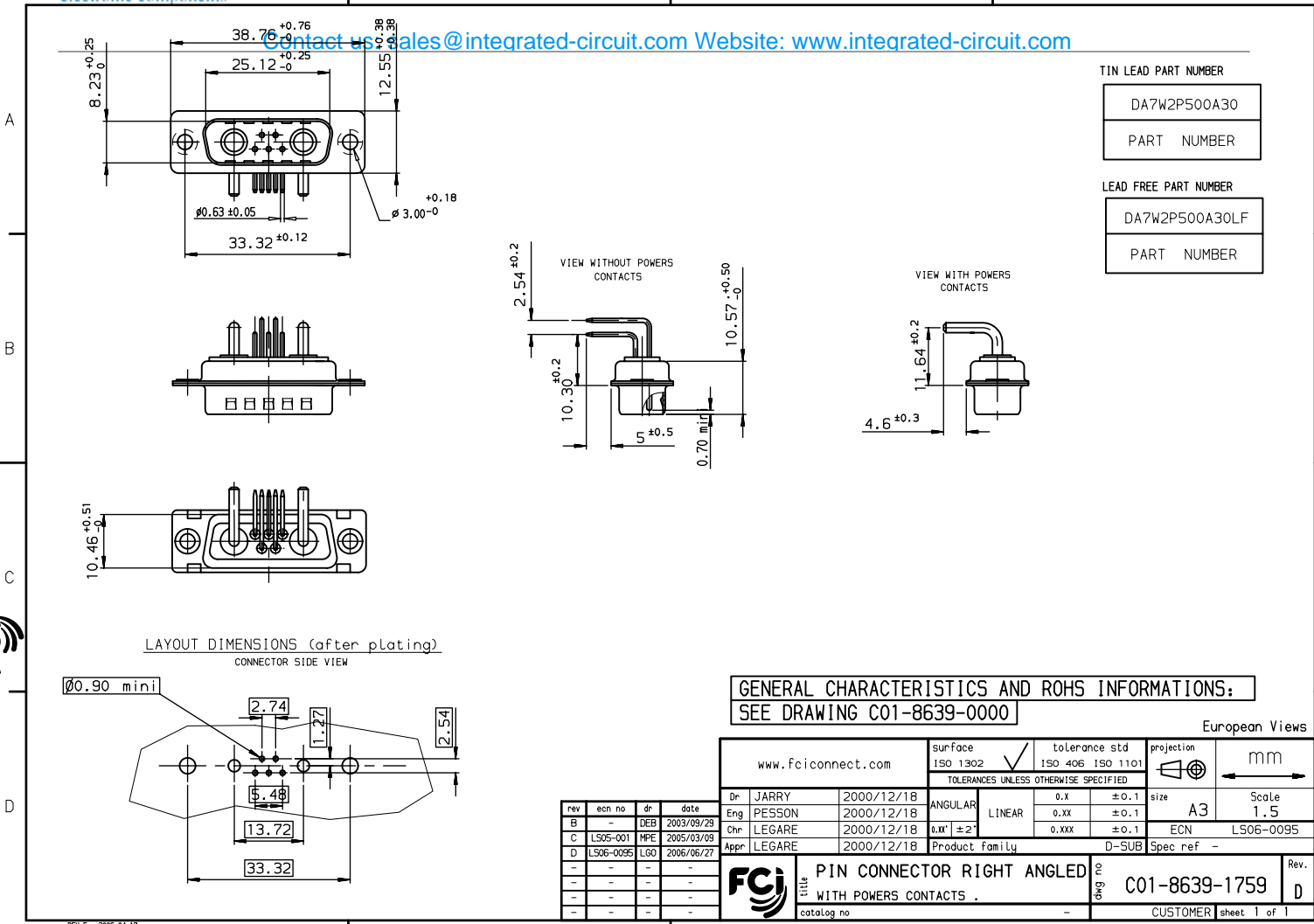
[DA7W2P500A30LF](#)

For any questions, you can email us directly:

sales@integrated-circuit.com

Contact us: sales@integrated-circuit.com Website: www.integrated-circuit.com

TIN LEAD PART NUMBER
DA7W2P500A30
PART NUMBER
LEAD FREE PART NUMBER
DA7W2P500A30LF
PART NUMBER



GENERAL CHARACTERISTICS AND ROHS INFORMATIONS:
 SEE DRAWING C01-8639-0000

European Views

www.fciconnect.com		surface	tolerance std		projection	mm
		ISO 1302	ISO 406	ISO 1101		Scale 1.5
		TOLERANCES UNLESS OTHERWISE SPECIFIED				
Dr	JARRY	2000/12/18	ANGULAR	0.X	size	A3
Eng	PESSON	2000/12/18	LINEAR	0.XX	ECN	LS06-0095
Chr	LEGARE	2000/12/18	0.XX ±2	0.XXX	Product family	D-SUB
Appr	LEGARE	2000/12/18	Product family		Spec ref	-
		PIN CONNECTOR RIGHT ANGLED WITH POWERS CONTACTS		2	C01-8639-1759	Rev. D
catalog no		-		CUSTOMER		sheet 1 of 1

rev	ecn no	dr	date
B	-	DEB	2003/09/28
C	LS05-001	MPE	2005/03/09
D	LS06-0095	LGO	2006/06/27
-	-	-	-
-	-	-	-
-	-	-	-
-	-	-	-

Copyright FCI.

REV F - 2006-04-17