

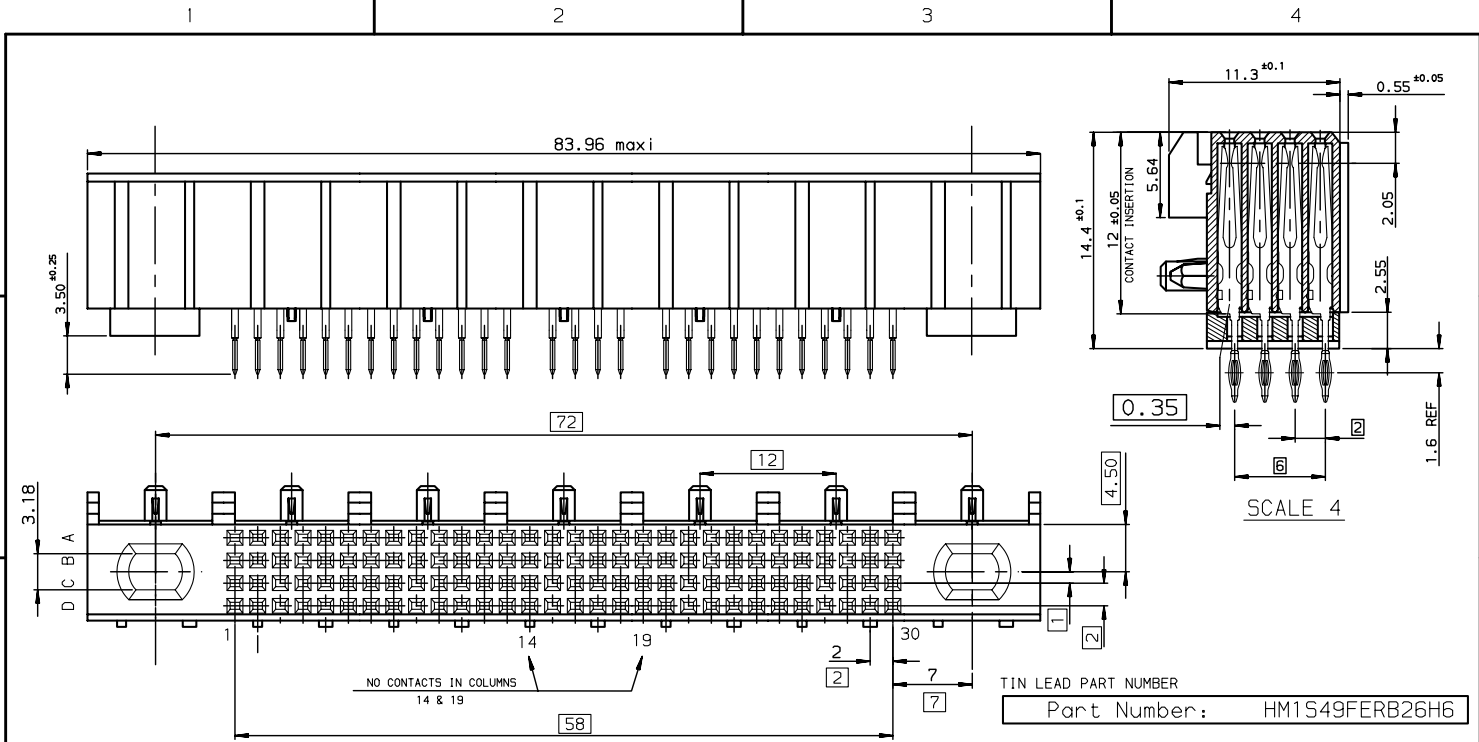
Excellent Integrated System Limited

Stocking Distributor

Click to view price, real time Inventory, Delivery & Lifecycle Information:

[FCI](#)
[HM1S49FERB26H6LF](#)

For any questions, you can email us directly:
sales@integrated-circuit.com

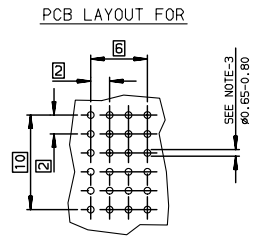


TIN LEAD PART NUMBER
 Part Number: HM1S49FERB26H6
 LEAD FREE PART NUMBER
 Part Number: HM1S49FERB26H6LF

GENERAL CHARACTERISTICS AND ROHS INFORMATIONS:
 SEE GS-12-447

- NOTE-1: COMPATIBLE WITH NARROW AND WIDE BODY
 NOTE-2: PCB FINISH HOLE DIAMETER : SEE GS-12-447
 NOTE-3: STANDARD PACKAGING IS IN TUBE ,BUT IF SUFFIX "P"
 IS ADDED IN P/N ,PACKAGING IS IN TRAYS ,BUT CONNECTOR
 MARKING IS WITHOUT "P"
 Example: HM1FxxxxxxxxH6PLF, marking: HM1FxxxxxxxxH6LF

SPECIFIC DATAS
 - SPECIFIC HYBRID HOUSING
 - NO CONTACTS IN COLUMNS 14 & 19



www.fciconnect.com		surface ISO 1302	tolerance std ISO 406 ISO 1101	projection mm	mm
		TOLERANCES UNLESS OTHERWISE SPECIFIED		size A3	Scale 2.5
Dr	PERRICHOT	2001/06/12	ANGULAR	0.X	±0.1
Eng	LENOIR	2001/06/12	LINEAR	0.XX	±0.1
Chr	LEGARE	2001/06/12	0.XX	0.XXX	±0.1
Appr	LEGARE	2001/06/12	Product family	METRAL	Spec ref -
FCI METRAL FEM. 4 ROW STRAIGHT PRESS FIT			C-8626-11133		Rev. H
SPECIF B26			CUSTOMER		sheet 1 of 1

rev	ecn no	dr	date
D		GRI	2001/08/09
E	LS05-004	MLE	2005/02/23
F	LS06-0035	LGO	2006/07/06
G	LS06-0159	MLE	2006/10/24
H	LS07-0266	MLE	2007/11/09
-	-	-	-
-	-	-	-

Copyright FCI

REV F - 2006-04-17