



Distributor of FCI: Excellent Integrated System Limited

Datasheet of DAV7W2S500G30LF - D-Sub Connector Receptacle, Female Sockets 7 (5 + 2 Power) Position Through Hole, Right Angle Solder

Contact us: sales@integrated-circuit.com Website: www.integrated-circuit.com

Excellent Integrated System Limited

Stocking Distributor

Click to view price, real time Inventory, Delivery & Lifecycle Information:

[FCI](#)

[DAV7W2S500G30LF](#)

For any questions, you can email us directly:

sales@integrated-circuit.com

Contact us: sales@integrated-circuit.com Website: www.integrated-circuit.com

A

B

C

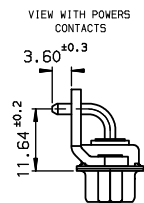
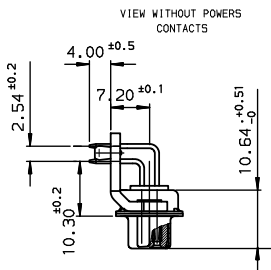
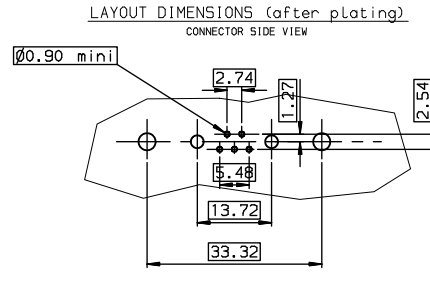
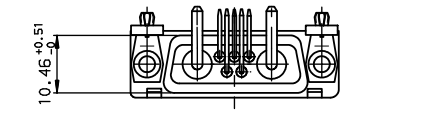
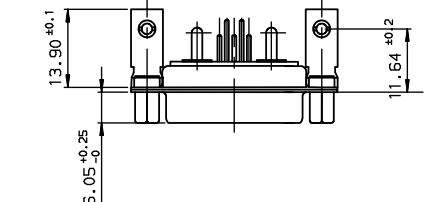
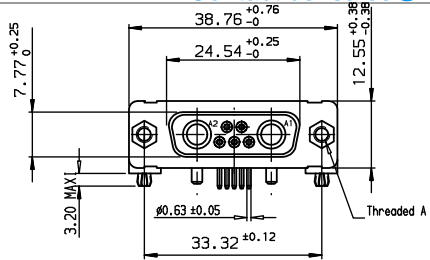
D

A

B

C

D



TIN LEAD PART NUMBER

| | |
|---------------|------------|
| DAV7W2S500G30 | UNC 4.40 |
| DAI7W2S500G30 | M3 |
| PART NUMBER | Threaded A |

LEAD FREE PART NUMBER

| | |
|-----------------|------------|
| DAV7W2S500G30LF | UNC 4.40 |
| DAI7W2S500G30LF | M3 |
| PART NUMBER | Threaded A |

GENERAL CHARACTERISTICS AND ROHS INFORMATIONS:
SEE DRAWING C01-8639-0000

| | | | | |
|------------------------|-----------------------|----------------------------------------------------|-----------------------------------|-----------------------|
| www.fciconnect.com | | surface ISO 1302 | tolerance std ISO 406 ISO 1101 | projection mm |
| Dr JARRY 1998/06/02 | | TOLERANCES UNLESS OTHERWISE SPECIFIED | | size A3 |
| Eng PESSON 1998/06/02 | Chr LEGARE 1998/06/02 | ANGULAR | LINEAR | Scale 1.5 |
| Appr LEGARE 1998/06/02 | Product Family D-SUB | 0.x ±0.1 | 0.xx ±0.1 | ECN LS06-0095 |
| FCI | | SOCKET CONNECTOR RIGHT ANGLED WITH POWERS CONTACTS | | Rev. D |
| catalog no | | C01-8639-0709_637 | | CUSTOMER sheet 1 of 1 |

| rev | ecn no | dr | date |
|-----|-----------|-----|------------|
| B | - | DEB | 2003/10/21 |
| C | LS05-001 | MPE | 2005/03/08 |
| D | LS06-0095 | LGO | 2006/07/20 |
| - | - | - | - |
| - | - | - | - |
| - | - | - | - |

REV F - 2006-04-17

Copyright FCI.
FCI