

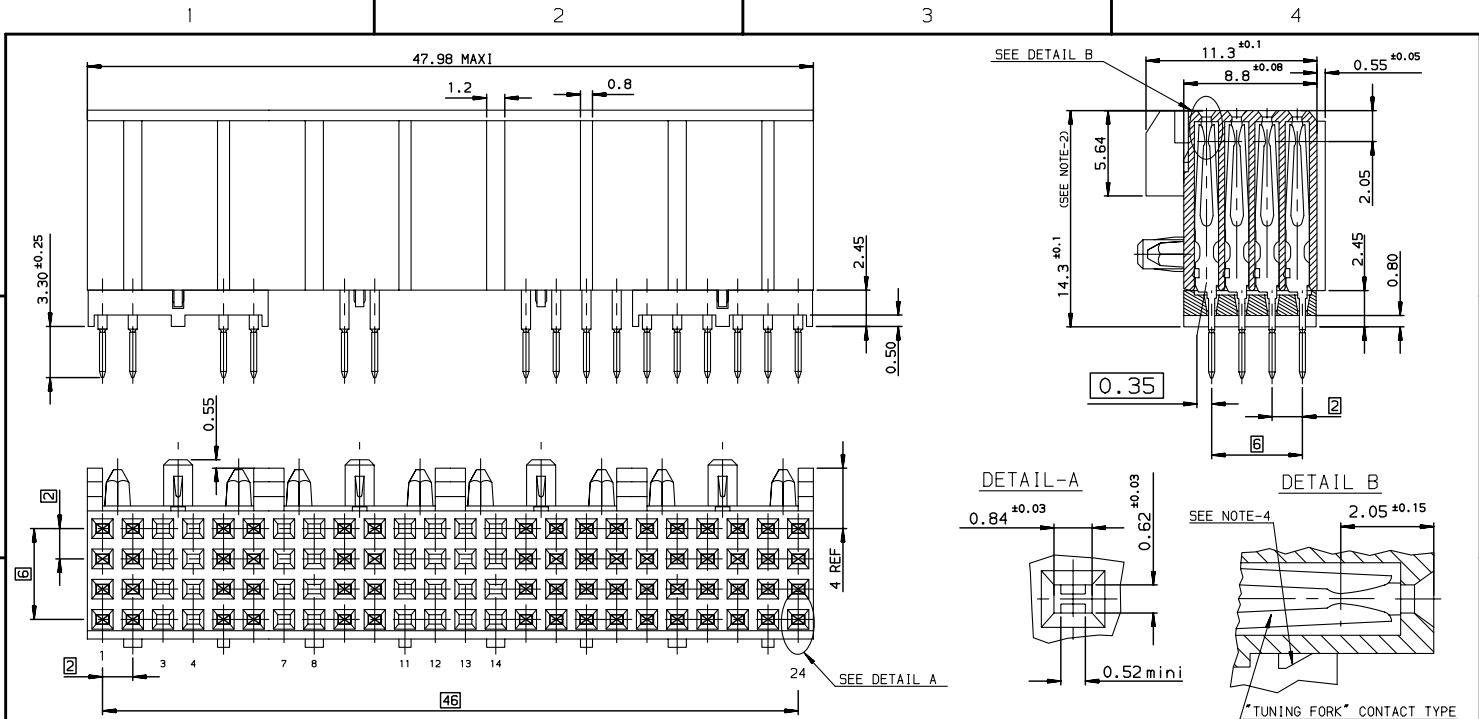
Excellent Integrated System Limited

Stocking Distributor

Click to view price, real time Inventory, Delivery & Lifecycle Information:

[FCI](#)
[HM1S43FRR460H6PLF](#)

For any questions, you can email us directly:
sales@integrated-circuit.com



SPECIFIC DATAS

SELECTIVE LOADING - 64 CTS
 NO CONTACT IN COLUMNS N°3-4-7-8-11-12-13-14
 2 SPACERS ONLY AT THE TWO ENDS

- NOTE-1: COMPATIBLE WITH NARROW AND WIDE BODY
- NOTE-2: PCB HOLE DEFINITION, SEE GS-12-448
- NOTE-3: PLUG FOR CODING KEY FIXING
- NOTE-4: IF SUFFIX "P" IS ADDED PACKAGING IS TRAYS BUT MARKING WILL BE WITHOUT "P"

Example P/N: HM1F41FAP000H6P, Marking HM1F41FAP000H6

GENERAL CHARACTERISTICS AND ROHS INFORMATIONS:
SEE GS-12-448

TIN LEAD PART NUMBER

Part Number: HM1S43FRR460H6

LEAD FREE PART NUMBER

Part Number: HM1S43FRR460H6LF

European Views

www.fciconnect.com		surface 150 1302	tolerance std 150 406 150 1101	projection mm
TOLERANCES UNLESS OTHERWISE SPECIFIED				
Dr	CHAMPION	2003/03/25	ANGULAR	0.X ±0.1
Eng	LENOIR	2003/03/25	LINEAR	0.XX ±0.1
Chr	LEGARE	2003/03/25	0.XXX ±2°	0.XXX ±0.1
Appr	LEGARE	2003/03/25	Product family	METRAL
size				A3
ECN				LS07-0266
Spec ref				-
METRAL F RECEPTACLE- 64CTS-STB- SPEC FOR CHEROKKE			Qty 2	C-8626-11215
catalog no			-	Rev. E
CUSTOMER				sheet 1 of 1

rev	ecn no	dr	date
A	-	PCH	2003/03/25
B	LS05-0056	LGO	2005/07/25
C	LS06-0037	LGO	2006/07/21
D	LS06-0182	MLE	2006/11/17
E	LS07-0266	MLE	2007/10/26
-	-	-	-
-	-	-	-

Copyright FCI.

REV F - 2006-04-17