

## Excellent Integrated System Limited

Stocking Distributor

Click to view price, real time Inventory, Delivery & Lifecycle Information:

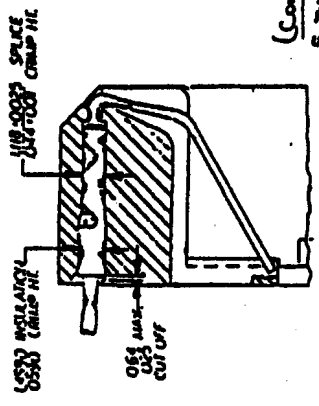
[FCI](#)

[68974-031](#)

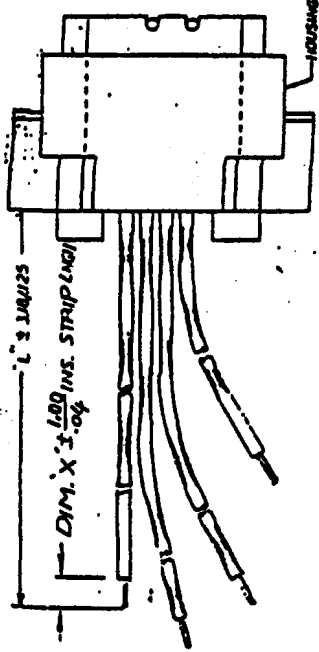
For any questions, you can email us directly:

[sales@integrated-circuit.com](mailto:sales@integrated-circuit.com)

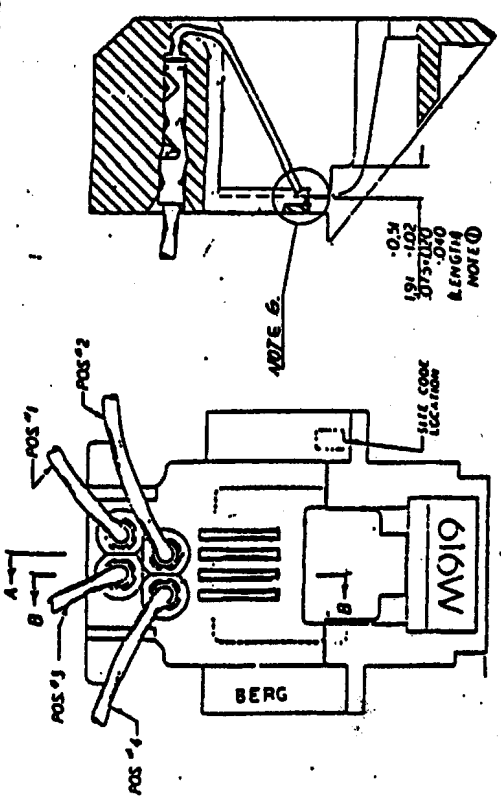
Product no  
 SEE CHART



FORMING SECTION B-B



SECTION A-A



- (CONTINUED NOTES)
- INSULATED WIRE: UNLESS OTHERWISE NOTED (SEE TABLE), USE UL 1061 PAW 27, 7 STRANDS OF TWISTED COPPER WIRE, P.L.C. INSULATION. DUPONT WIRE:
  - TID-20-CORCORP: 301025-001, TYPE B UNLESS OTHERWISE NOTED
  - TEST METHOD PER UL-762, SEC. 22.2.
  - NOTES:
    - FOR VISUAL MECHANICAL AND FUNCTIONAL REQUIREMENTS SEE SPECIFICATION 68974-031.
    - USA MATL: ABS WELDING COMPBOND, FLOWITE GRANULATE PER UL-94 V-0, COLOR SEE TABLE.
    - TEAM MATL: 3/4 HMO BRASS ALLOY, UNS-C26000, PREPARED - see 1/2 and 3 TABLE OR WU-PLATE, SEE TABLE
    - GOLD WIRE MATL: PHOS BRASS ALLOY, UNS-C26000, 130 TO 150 M.P.S., TEXTILE. SEE TABLE FOR APPLICATION THICKNESS. (TO BE CONFIRMED)

REV		DATE	BY	CHKD	APP'D	DESCRIPTION	MATERIAL CODE	INTERCHANGES UNLESS OTHERWISE SPECIFIED	CUSTOMER COPY	FCI
H	T	04/01/78	TC	MB	W/PC				projection	616W SPADELESS MOD JACK
A										
B										
C										
D										
E										
F										
G										
sheet index		revision sheet		H A A A A B H		1 2 3 4 5 6 7		scale		NA
product family		MOD JACK		code		TWN		sheet		1 of 7
part no		68974-031		drawing no		A1		part no		68974



PRODUCT NO	POS. NO	COLOR	LEAD LNGTH DIM. "L"	FINISH ON END OF WIRE	INS. STRIP DIM. X	INS. WIRE NO	REVISION	
							REV	DESCRIPTION
68974-001	1	RED	82.55/3.25	CUT & STRIP	5.08/.20	301025-003	(Note 2)	(Note 3)
	2	WHITE	234.95/9.25			-004	HOUSING	Gold wire
	3	GREEN	234.95/9.25			-005	P/S & Color	PLATING
	4	BLACK	82.55/3.25			-002		
68974-002	1	RED	100.00/3.94			-003		
	2	WHITE				-004		
	3	GREEN				-005		
	4	BLACK	100.00/3.94	CUT & STRIP	5.08/.20	301025-002	L/GRAY	
68974-003	1	YELLOW	150.00/5.90	CUT & STRIP	5.08/.20	301025-001		
	2	GREEN	180.00/7.09			-005		
	3	RED	180.00/7.09			-003		
	4	BLACK	150.00/5.90	CUT & STRIP	5.08/.20	301025-002	L/GRAY	0.75µm/30µ"
68974-004	1	RED	82.55/3.25	CUT & STRIP	5.08/.20	301025-003		
	2	WHITE	234.95/9.25			-004		
	3	GREEN	234.95/9.25			-005		
	4	BLACK	82.55/3.25	CUT & STRIP	5.08/.20	301025-002	L/GRAY	0.75µm/15µ"
68974-005	1	RED	88.90/3.50	CUT & STRIP	3.00/.12	301025-003		
	2	WHITE	181.60/7.15			-004		
	3	GREEN	181.60/7.15			-005		
	4	BLACK	88.90/3.50	CUT & STRIP	3.00/.12	301025-002	L/GRAY	PLATED 0.75µm/30µ"
68974-006	1	RED	82.55/3.25	CUT & STRIP	4.00/.16	301025-003		
	2	WHITE	234.95/9.25			-004		
	3	GREEN	234.95/9.25			-005		
	4	BLACK	82.55/3.25	CUT & STRIP	4.00/.16	301025-002	L/GRAY	Non-plated 0.75µm/30µ"

ISSUE DATE: 1/23/99

APPROVED BY: [Signature]

DESIGNED BY: [Signature]

DRAWN BY: [Signature]

CHECKED BY: [Signature]

DATE: [Signature]

CUSTOMER COPY		DATE	
MATERIAL	DATE	DATE	
FINISH		DATE	
APPRO		DATE	
TITLE		SCALE	
616W SPADELESS M/J ASS'Y		B	
DRAWING NO. 68974		SHEET 2 OF	





PRODUCT NO		REVISIONS		REV		DATE	
68974		DESCRIPTION		BY		DATE	
POS. NO.	FINISL. ON END OF WIRE	INS. STRIP DIM. X	(NOTE 5) INS. WIRE NO	(NOTE 2) HOUSING P/N & COLOR	(NOTE 3) TERMINAL PLATING	(NOTE 4) GOLD WIRE PLATING	
PRODUCT NO	LEAD LNGTH DIM. "L"						
68974-007	82.55/3.25	3.00/.12	301025-003	65883-005	Non-plated	0.75µm/30µ"	
	234.95/9.25		-004	L/GRAY			
	234.95/9.25		-005				
	82.55/3.25	3.00/.12	301025-002				
68974-008	53.00/2.09	6.00/.24	301025-003	SK11521-001	Plated	0.75µm/30µ"	
	203.00/7.99		-004	BEIGE			
	203.00/7.99		-005				
	53.00/2.09	6.00/.24	301025-002				
68974-009	85.60/3.37	4.30/.17	301025-003			1.27µm/50µ"	
	218.95/8.62		-004	65883-005			
	218.95/8.62		-005	L/GRAY			
	85.60/3.37	4.30/.17	301025-002				
68974-010	82.60/3.25	5.08/.20	301025-003			0.75µm/30µ"	
	177.80/7.00		-004	65883-005			
	177.80/7.00		-005	L/GRAY			
	82.60/3.25	5.08/.20	301025-002				
68974-011	82.60/3.25	5.08/.20	301025-003			0.75µm/30µ"	
	127.00/5.00		-002	65883-005			
	127.00/5.00		-004	L/GRAY			
	82.60/3.25	5.08/.20	301025-005				
68974-012	82.60/3.25	5.08/.20	301025-003			1.27µm/50µ"	
	234.95/9.25		-004	65883-005	Plated		
	234.95/9.25		-005	L/GRAY			
	82.60/3.25	5.08/.20	301025-002				

Customer Copy		DATE		DATE	
MATL	DR	INCH	MM	DR	MM
	CK D	DO	DO	CK D	DO
	ENGR	COPT DOB		ENGR	COPT DOB
	APP D			APP D	
TOLERANCES UNLESS OTHERWISE NOTED		LINEAR		RADI	
DO NOT SCALE DRAWING		THIRD ANGLE PROJECTION		Holes	
NEXT ASSY USED ON		INCH		MM	
APPLICATION					
TITLE 616W SPADELESS M/J ASSY		SCALE		SIZE	
L		B		B	
5/19/06		68974		SHEET 3 OF	



Table with columns: DESIGNED TO AP, CHECKED, DRAWING NO, APPROVED, DATE, L.P. E., CLASS, DRAWING, C.M. E., CRYSTAL, E.P. C., ENGRAVING, CQ. C., ENGRAVING, C.M. S., ENGRAVING, C.M. S. S., ENGRAVING, P. P. ENGRAVING, ISSUE DATE: 1/23/87

PRODUCT NO 68974

Main product specification table with columns: PRODUCT NO, POS. NO., LEAD LGTH DIM. "L", FINISH ON END OF WIRE, INS. STRIP DIM. X, INS. WIRE NO, HOUSING Ø/S & COLOR, TERMINAL PLATING, (NOTE 4) GOLD WIRE PLATING, (NOTE 5) INS. WIRE NO

Customer Copy form with fields: DATE, FINISH, TITLE, SCALE, SIZE, LONG NO, and company logo

Handwritten number: 68974 SHY 4



REV	DESCRIPTION	REV	DATE
A			

PRODUCT NO	POS. NO.	COLOR	LEAD LGTH DIM. 'L'	FINISH ON END OF WIRE	INS. STRIP DIM. X	INS. WIRE NO	HOUSING P/U & COLOR	TERMINAL PLATING	(NOTE 4) GOLD WIRE PLATING
8974-019	1	RED	54.00/2.13	STRIP & DIP	3.0 +0.5/-0 /.12 +.02/-0	SK15149-003			
	2	WHITE	204.00/8.03			(UL1061, AWG 26, NON-REF CONDUCTOR) -004	65883-005	NON-PLATED	1.27 μm/50 μ"
	3	GREEN	204.00/8.03						
	4	BLACK	54.00/2.13	STRIP & DIP	3.0 +0.5/-0 /.12 +.02/-0	SK15149-002	L/GRAY		
8974-020	1	RED	174.00/6.85	CUT		300979-003			
	2	WHITE				-004	65883-005		0.75 μm/30 μ"
	3	GREEN				-005			
	4	BLACK	174.00/6.85	CUT		300979-002	L/GRAY		
8974-021	1	RED	185.00/7.28	CUT		300979-003			
	2	WHITE				-004	65883-005	NON-PLATED	0.75 μm/30 μ"
	3	GREEN				-005			
	4	BLACK	185.00/7.28	CUT		300979-002	L/GRAY		

TITLE		616W SPADELESS M/J ASSY	
SCALE	A3	DWG. NO.	68974
SHT	5	OF	5

DATE	MAT'L
DR	CK'D
ENGR	FINISH
APPD	

MM	INCH
00.2	00.2
000.2.005	0.002.0.13
MM	INCH
0.01	0.01
ANGLES	± 0° 30'

CUSTOMER INSPECTION	TOLERANCES UNLESS OTHERWISE NOTED
THIRD ANGLE PROJECTION	LINEAR
DO NOT SCALE DRAWING	ANGLES
NEXT ASSY	USED ON
APPLICATION	

APPROVED TO AP	DESIGNED
ENGINEER	CHECKED
DR	DATE
SCALE	BY
DATE	BY

Customer Copy



THIS PRODUCT IS THE PROPERTY OF AND ASSUMES RESPONSIBILITY IN PART OF THE DESIGN SOURCE. THIS PRODUCT MAY BE USED IN ANY WAY WITHOUT THE WRITTEN CONSENT OF MO SHIN TAIWAN LTD.

		REVISIONS													
		REV	DESCRIPTION	BY	DATE										
		B	ECRT10007	JACOB	910107										
PRODUCT NO.	WIRE NO.	WIRE COLOR	DIM. 'L' (MM)	INS. WIRE STYLE (NOTE 5)	HOUSING P/N,COLOR (NOTE 2)	HOUSING COLOR	SPLICE FINISH (NOTE 3)	SPRING CONTACT PLATING (NOTE 4)	DIM. 'X' (MM)	FINISH ON WIRE END					
68974-022	1	RED	48.0/1.89	301025-XXX	65883-005	LIGHT GRAY	UNPLATED	30U"AU	3.0/0.12	CUT & STRIP					
	2	WHITE	↑	301025-XXX	65883-005	LIGHT GRAY	UNPLATED	30U"GXT	3.0/0.12	CUT & STRIP					
	3	GREEN									60.0/2.36				
	4	BLACK	48.0/1.89												
68974-023	1	RED	60.0/2.36	301025-XXX	65883-005	LIGHT GRAY	UNPLATED	30U"GXT	3.0/0.12	CUT & STRIP					
	2	RED	190.0/7.48	301025-XXX	65883-005	LIGHT GRAY	UNPLATED	30U"GXT	5.08/0.20	CUT & STRIP					
	3	GREEN	190.0/7.48												
	4	YELLOW	60.0/2.36												
68974-024	1	RED	81.8/3.22	301025-XXX	65883-005	LIGHT GRAY	UNPLATED	30U"GXT	3.0/0.12	CUT & STRIP					
	2	WHITE	234.2/9.22	301025-XXX	65883-005	LIGHT GRAY	UNPLATED	30U"GXT	5.08/0.20	CUT & STRIP					
	3	GREEN	234.2/9.22												
	4	BLACK	81.8/3.22												
68974-025	1	RED	40.0/1.57	301025-XXX	65883-005	LIGHT GRAY	UNPLATED	30U"GXT	3.0/0.12	CUT & STRIP					
	2	WHITE	180.0/7.09	301025-XXX	65883-005	LIGHT GRAY	UNPLATED	30U"GXT	5.08/0.20	CUT & STRIP					
	3	GREEN	180.0/7.09												
	4	BLACK	40.0/1.57												
68974-026	1	RED	82.55/3.25	301025-XXX	SK11521-2	BLACK	PLATING	15U"AU	3.0/0.12	CUT & STRIP					
	2	WHITE	234.95/9.25	301025-XXX	SK11521-2	BLACK	PLATING	15U"AU	5.08/0.20	CUT & STRIP					
	3	GREEN	234.95/9.25												
	4	BLACK	82.55/3.25												
68974-027	1	RED	40.0/1.57	301025-XXX	65883-005	LIGHT GRAY	UNPLATED	30U"GXT	3.0/0.12	CUT & STRIP					
	2	WHITE	183.0/7.20	301025-XXX	65883-005	LIGHT GRAY	UNPLATED	30U"GXT	5.08/0.20	CUT & STRIP					
	3	GREEN	183.0/7.20												
	4	BLACK	40.0/1.57												
68974-028	1	RED	50.0/1.97	300979-XXX	65883-005	LIGHT GRAY	UNPLATED	30U"AU	3.0/0.12	CUT & STRIP					
	2	WHITE	180.0/7.09	300979-XXX	65883-005	LIGHT GRAY	UNPLATED	30U"AU	5.08/0.20	CUT & STRIP					
	3	GREEN	180.0/7.09												
	4	BLACK	50.0/1.97												



SHEET INDEX	ISSUE B	SHEET NO. 6	TOLERANCES UNLESS OTHERWISE NOTED		DATE	DR JACOB	DATE	MAT'L
			LINEAR	ANGLES	OCT 22 98	CK'D J.T.SAO	OCT 22 98	
			±0.00%	±0.30°		ENG JACOB	OCT 22 98	FINISH
			±0.00%	±0.30°		APP'D J.T.SAO	OCT 22 98	
NEXT ASSY	USED ON	APPLICATION	CUSTOMER		RADIUS		TITLE	
			DO NOT SCALE DRAWING		±0.00		MOD. JACK ASSY 616W	
					-0.015		SCALE A4	
							DWG. NO. 68974-XXX	
							SHEET 6 OF	



product no  
 SEE CHART

PRODUCT NO.	WIRE NO.	WIRE COLOR	DIM. 'L'	INS. WIRE STYLE (NOTE 5)	HOUSING MATERIAL (NOTE 2)	HOUSING COLOR	SPLICE FINISH (NOTE 3)	SPRING CONTACT PLATING (NOTE 4)	DIM. 'X'	FINISH ON WIRE END
68974-029	1	RED	40.00/1.58	TYPE B	ABS UL 94V-0	LIGHT GRAY	UNPLATED	30U" GXT	3.0/0.12	CUT & STRIP
	2	WHITE	193.00/7.60							
	3	GREEN	193.00/7.60							
	4	BLACK	40.00/1.58							
68974-030	1	RED	40.00/1.58	TYPE B	ABS UL 94V-0	LIGHT GRAY	UNPLATED	30U" AU	2.5/.10	CUT & STRIP
	2	WHITE	↑							
	3	GREEN	↓							
	4	BLACK	40.00/1.58							
68974-031	1	RED	44.00/1.732	TYPE B	ABS UL 94V-0	LIGHT GRAY	UNPLATED	30U" GXT	3.0/0.12	CUT & STRIP
	2	WHITE	194.00/7.638							
	3	GREEN	204.00/8.031							
	4	BLACK	44.00/1.732							
68974-032	1	RED	163.0/6.42	TYPE B	ABS UL 94V-0	LIGHT GRAY	UNPLATED	30U" GXT	3.0/.12	CUT & STRIP
	2	WHITE	↑							
	3	GREEN	↓							
	4	BLACK	163.0/6.42							

part code		tolerance unless otherwise specified		CUSTOMER COPY		FCI	
br	ecm no	dr	date	linear	projection	title	code
F	T 68974	TC	01/27/98	0.00-0.127, 0.00-0.01	ASME Y14.5	616 W SPADELESS MOD JACK	TWN
G	ECR T 0137	TC	032594	0.000-0.009, 0.0000-0.002	mm inch	product family	MOO JACK
M	T 1401N	TC	022694	angles ±0.3°	mm inch	size/dwg no	68974
		dr	T. CHIEN	080704	scale		7 of 7
		engr	T. CHIEN	080704			
		chr	J. TSAO	080804			
		appd	J. TSAO	080804			
sheet	revision	sheet	1				
index		sheet					