

Excellent Integrated System Limited

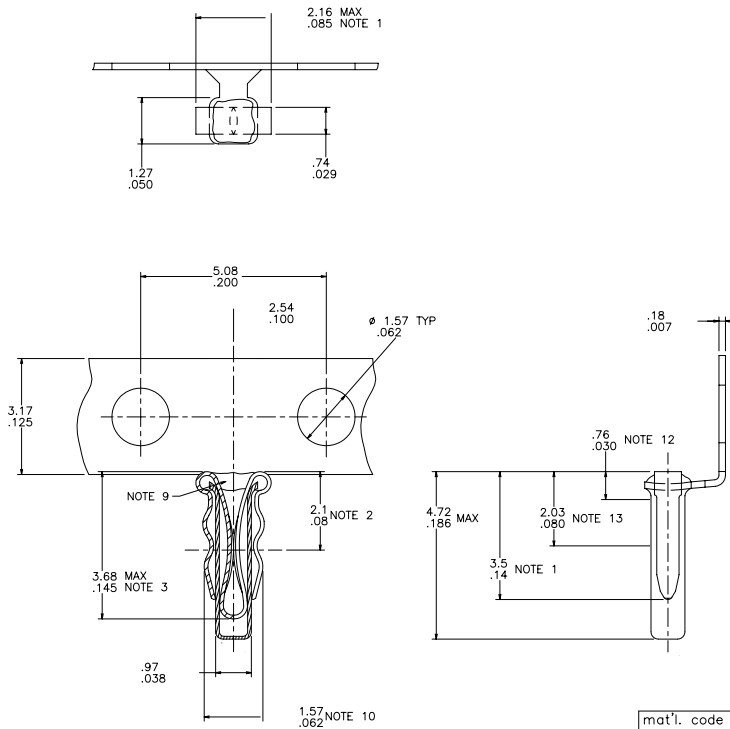
Stocking Distributor

Click to view price, real time Inventory, Delivery & Lifecycle Information:

[FCI](#)
[76693-002](#)

For any questions, you can email us directly:
sales@integrated-circuit.com

PRODUCT NO.	QTY/REEL
76693-001	25 M
76693-002	5 M



NOTES:

- ① DIMENSIONS APPLY PRIOR TO INSTALLATION.
- ② SHOWS CENTERLINE OF THEORETICAL POINT OF CONTACT FROM TOP OF SPRING.
- ③ SHOWS MAX DEPTH FOR .51/.020 LEAD FROM TOP OF SPRING.
4. THE SOCKET ASSY SHALL BE MACHINE INSERTABLE AND SELF-RETAINING DURING WAVE SOLDERING IN HOLES FROM 1.27/.050 TO 1.47/.058 DIA.
5. THE SPRING SHALL SOLDER TO THE CUP DURING WAVE SOLDERING IN SINGLE OR DOUBLE SIDED BOARDS TO 1.57/.062 THK, NO SOLDER SHALL ENTER CUP.
6. THE SOCKET SHALL ACCEPT ROUND LEADS FROM .30/.012 TO .56/.022 DIA AND FLAT LEADS, WHEN PROPERLY ORIENTED, FROM .20/.008 TO .36/.015 THK BY .38/.015 TO .58/.023 WIDE.
7. CUP MATERIAL: GILDING MATERIAL PER MIL C21768
SPRING MATERIAL: BeCu PER QQ-C-533
8. CUP PLATING: TIN-LEAD 60/40, .76μ/30μ" MIN THK
SPRING PLATING: 76μ/30μ" Au (MIL-G-4520B) TYPE IC, OVER 1.01μ/40μ" MICKEL (QQ-N-290).
- ⑨ RTV APPLIED TO AREA SHOWN TO PREVENT FLUX AND SOLDER FROM ENTERING SOCKET DURING WAVE SOLDERING.
- ⑩ DIM APPLIES WHEN TIP OF SPRING IS IN CONTACT WITH OUTSIDE OF CUP.
11. SEE PRODUCT SPECIFICATION NO 12-006 FOR INSERTION/WITHDRAWAL FORCES.
- ⑫ .76/.030 DIM REFERS TO INSTALLED HEIGHT 1, ABOVE BOARD.
- ⑬ 2.03/.080 DIM REFERS TO INSTALLED HEIGHT 2, ABOVE BOARD.

mat'l. code		surface	tolerance	projection	product family
-		ISO 1302	ISO 406	MM/INCH	SOCKETS
ltr	ecr no	date	tolerances unless otherwise specified		title
F	REDRAWN	5/8/87	.X ±.25/.01		MINISERT SOCKET ASS'Y
G	M06-0278	MHT 7/22/06	linear .XX ±.13/.005	scale 20:1	dwg no 76693 sheet 1 of 1 size A3
			0°±2'		type Product Customer Drawing
dr	R.SEIPLE	5/8/87			
enr	H.SUNDY	5/8/87			
chr	H.SUNDY	5/8/87			
appd	H.SUNDY	5/8/87			
sheet index	revision sheet	G 1			