



Distributor of FCI: Excellent Integrated System Limited

Datasheet of DB13W3S500G30LF - D-Sub Connector Receptacle, Female Sockets 13 (10 + 3 Power) Position Through Hole, Right Angle Solder

Contact us: sales@integrated-circuit.com Website: www.integrated-circuit.com

Excellent Integrated System Limited

Stocking Distributor

Click to view price, real time Inventory, Delivery & Lifecycle Information:

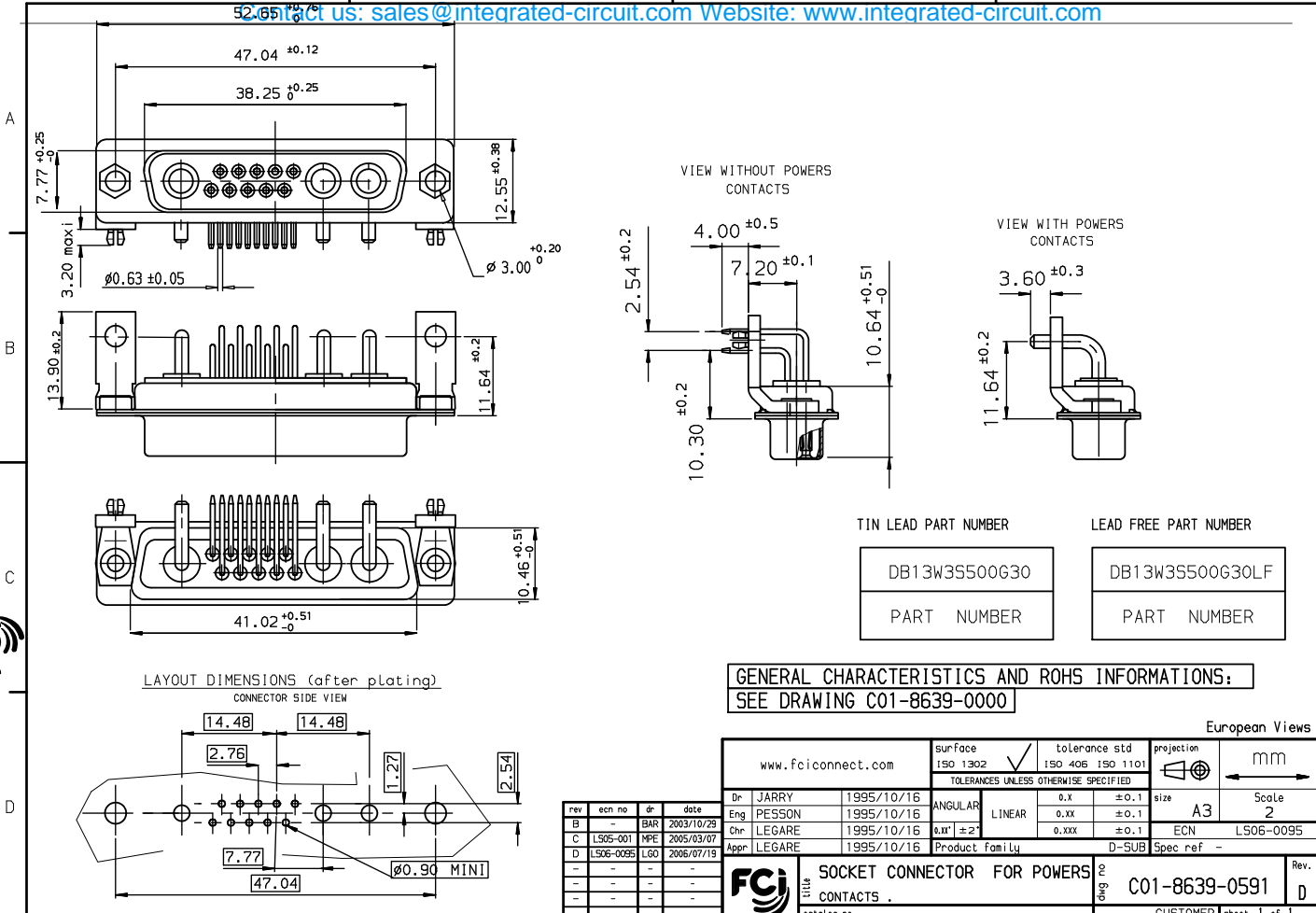
[FCI](#)

[DB13W3S500G30LF](#)

For any questions, you can email us directly:

sales@integrated-circuit.com

Contact us: sales@integrated-circuit.com Website: www.integrated-circuit.com



GENERAL CHARACTERISTICS AND ROHS INFORMATIONS:
SEE DRAWING C01-8639-0000

rev	ecn no	dr	date	Dr	1995/10/16	surface	tolerance std	projection	mm
B	-	BAR	2003/10/29	Eng	PESSON	1995/10/16	ISO 1302	ISO 406	ISO 1101
C	L505-001	MPE	2005/03/07	Chr	LEGARE	1995/10/16	TOLERANCES UNLESS OTHERWISE SPECIFIED		
D	L506-0095	LGO	2006/07/19	Appr	LEGARE	1995/10/16	ANGULAR	LINEAR	0.x ±0.1
-	-	-	-	-	-	-	0.xx ±0.1	0.xxx ±0.1	size A3
-	-	-	-	-	-	-	0.x ±0.1	0.xx ±0.1	Scale 2
-	-	-	-	-	-	-	0.xxx ±0.1	0.1	ECN L506-0095
-	-	-	-	-	-	-	Product Family	D-SUB	Spec ref -
-	-	-	-	-	-	-	FCI	SOCKET CONNECTOR FOR POWERS CONTACTS	Rev. D
-	-	-	-	-	-	-	title	01	C01-8639-0591
-	-	-	-	-	-	-	catalog no	-	CUSTOMER sheet 1 of 1

Copyright FCI.

REV F - 2006-04-17